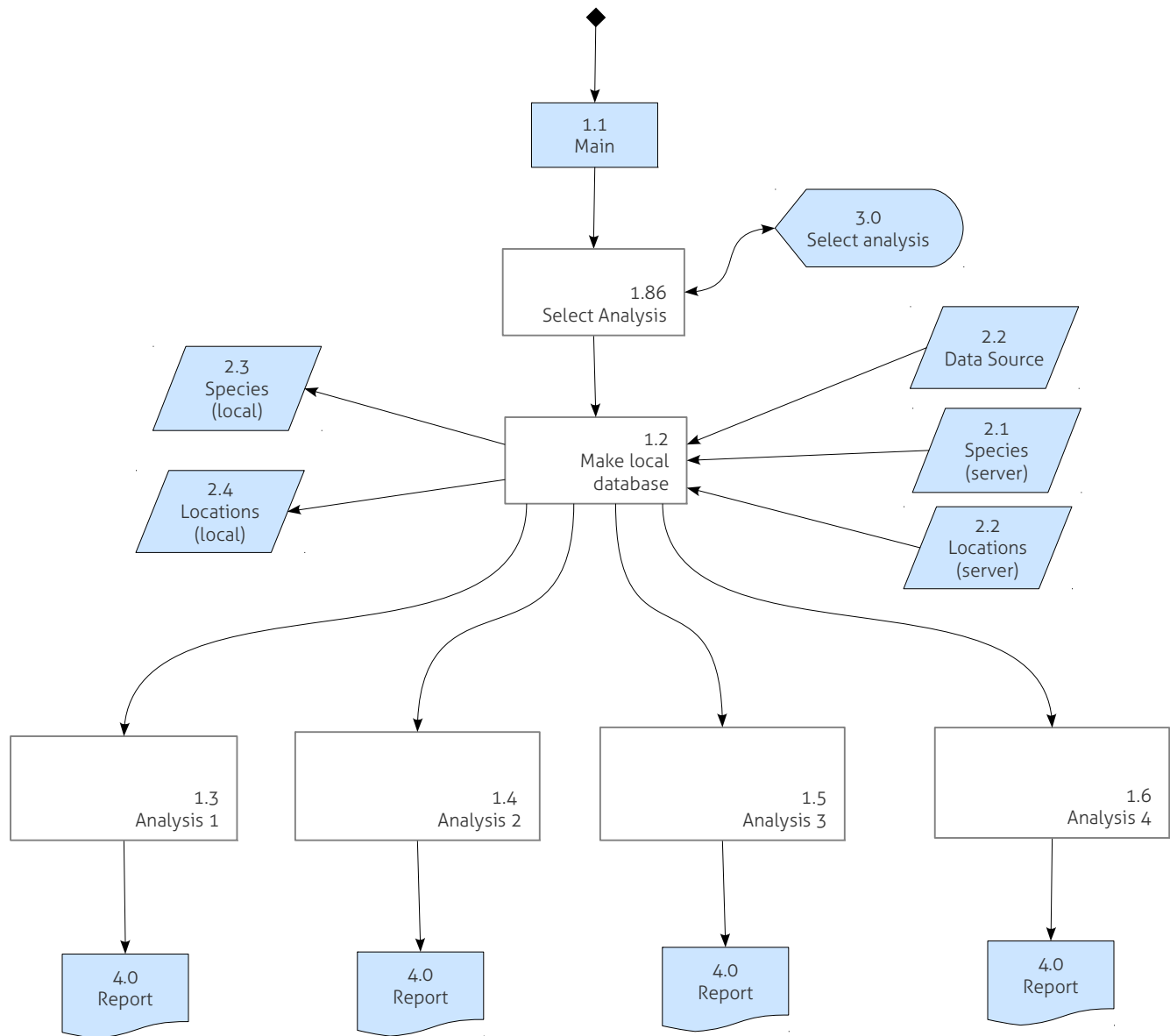


## 1.0 — main



This technical design is work in progress

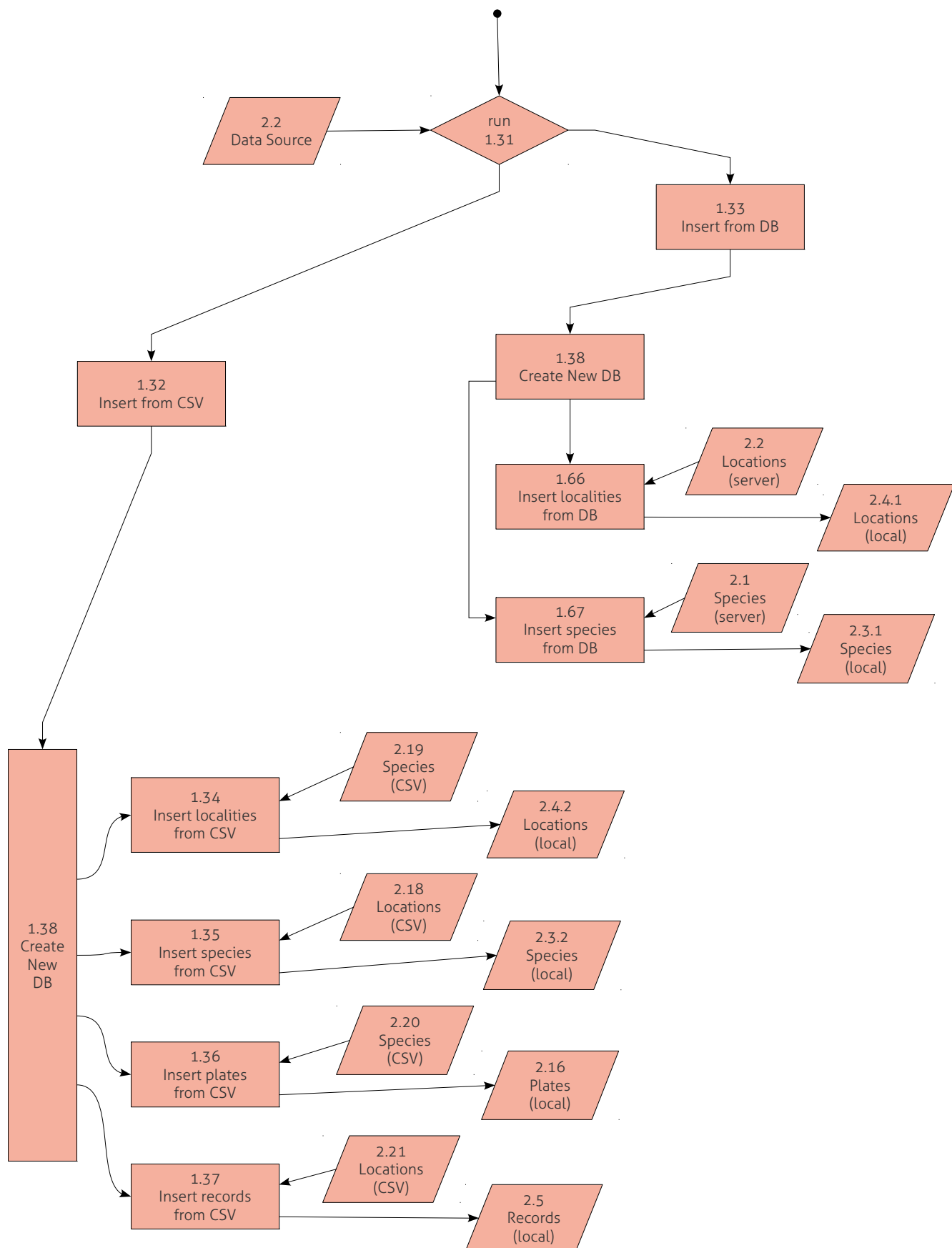
Process

Data

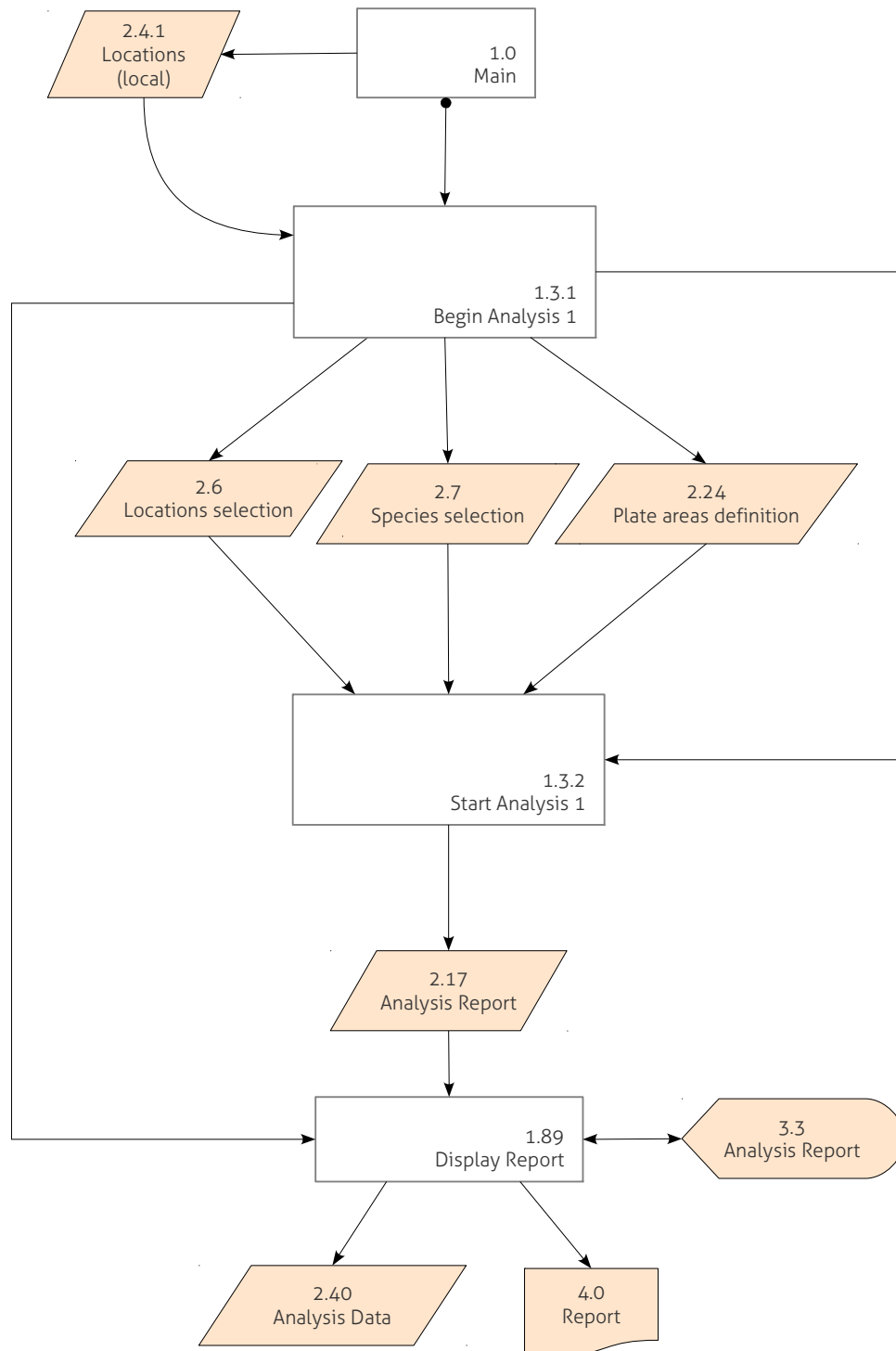
Display

Document

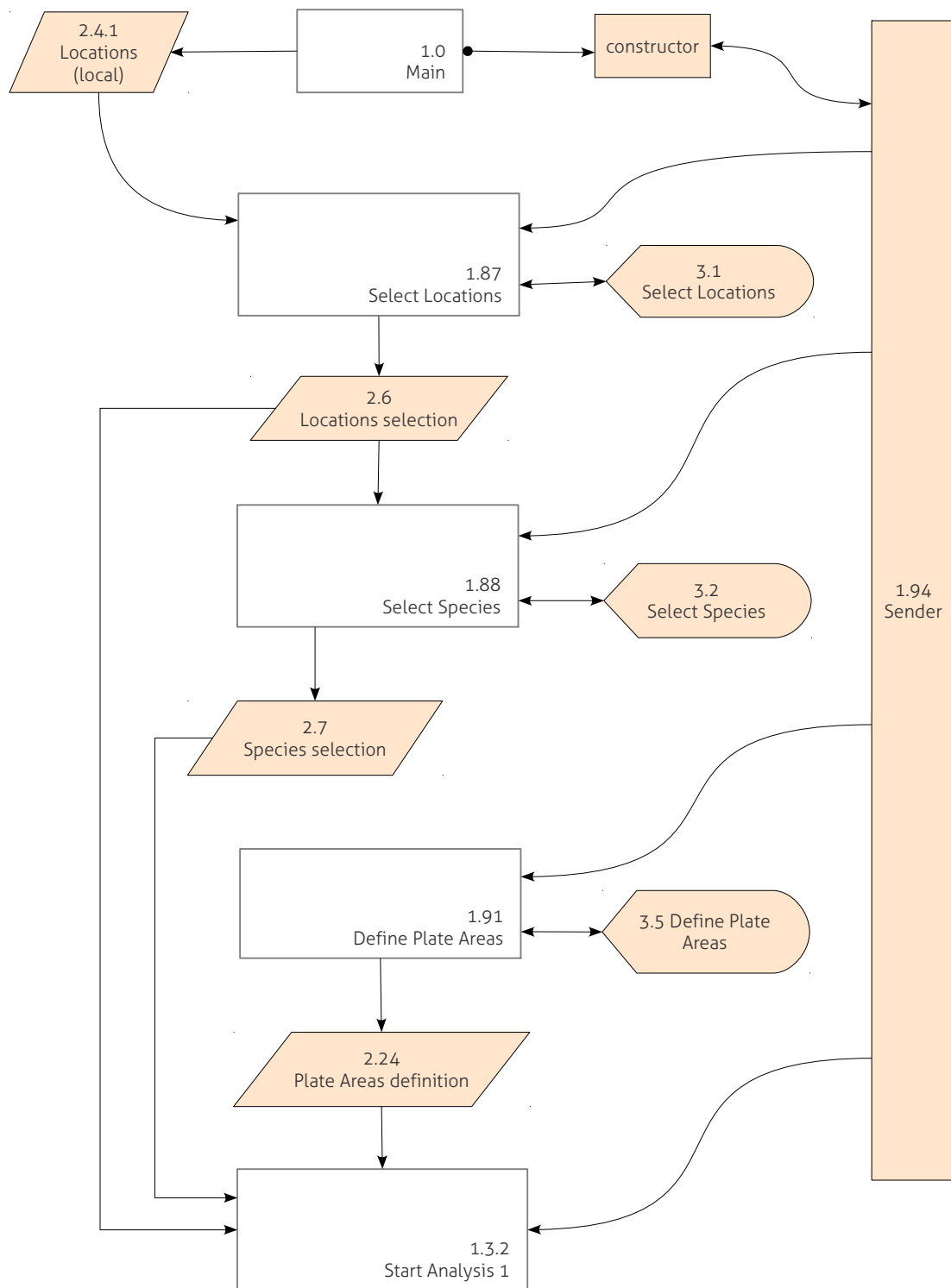
## 1.2 — database.MakeLocalDB



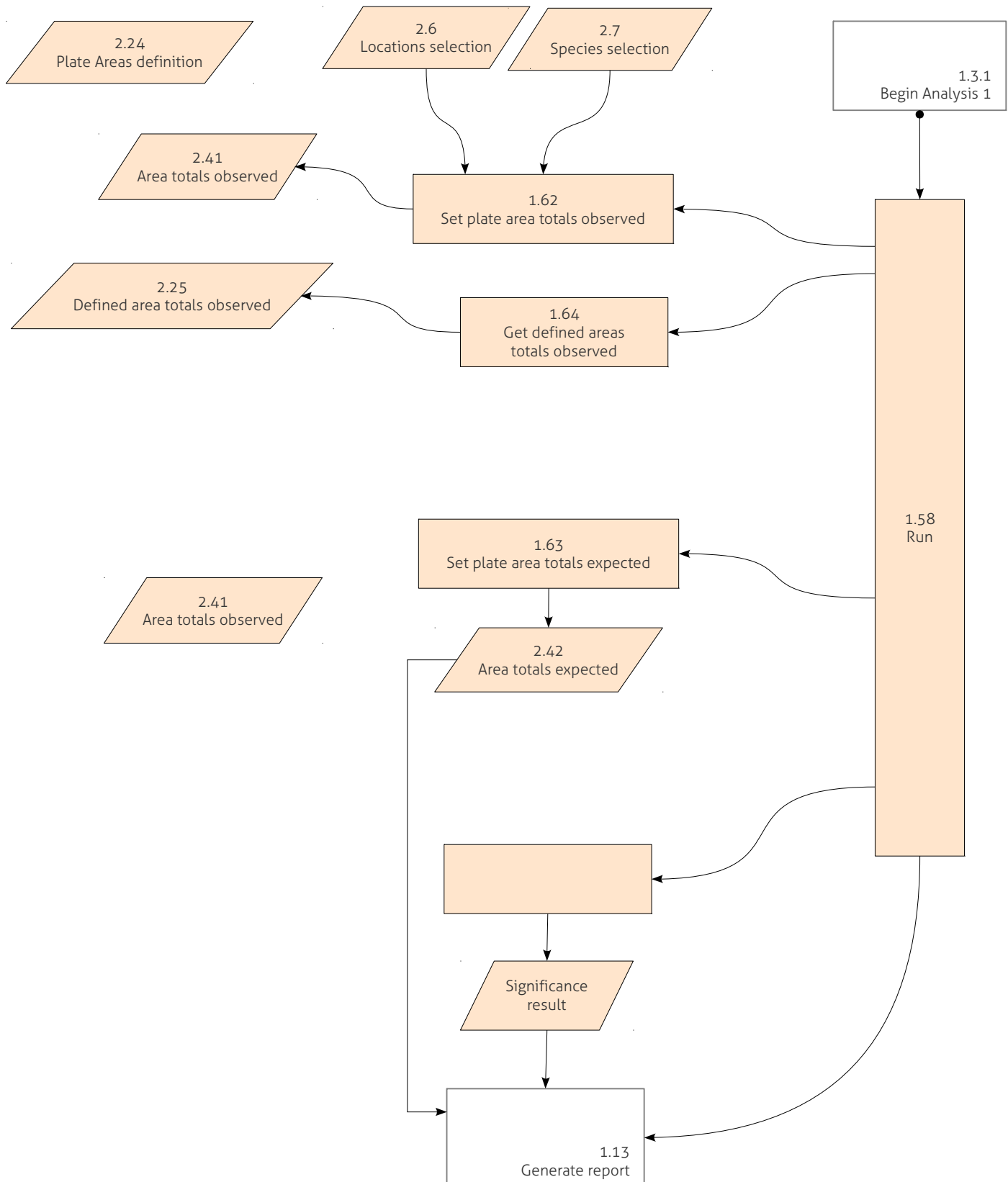
## 1.3 — analysis.spot\_preference



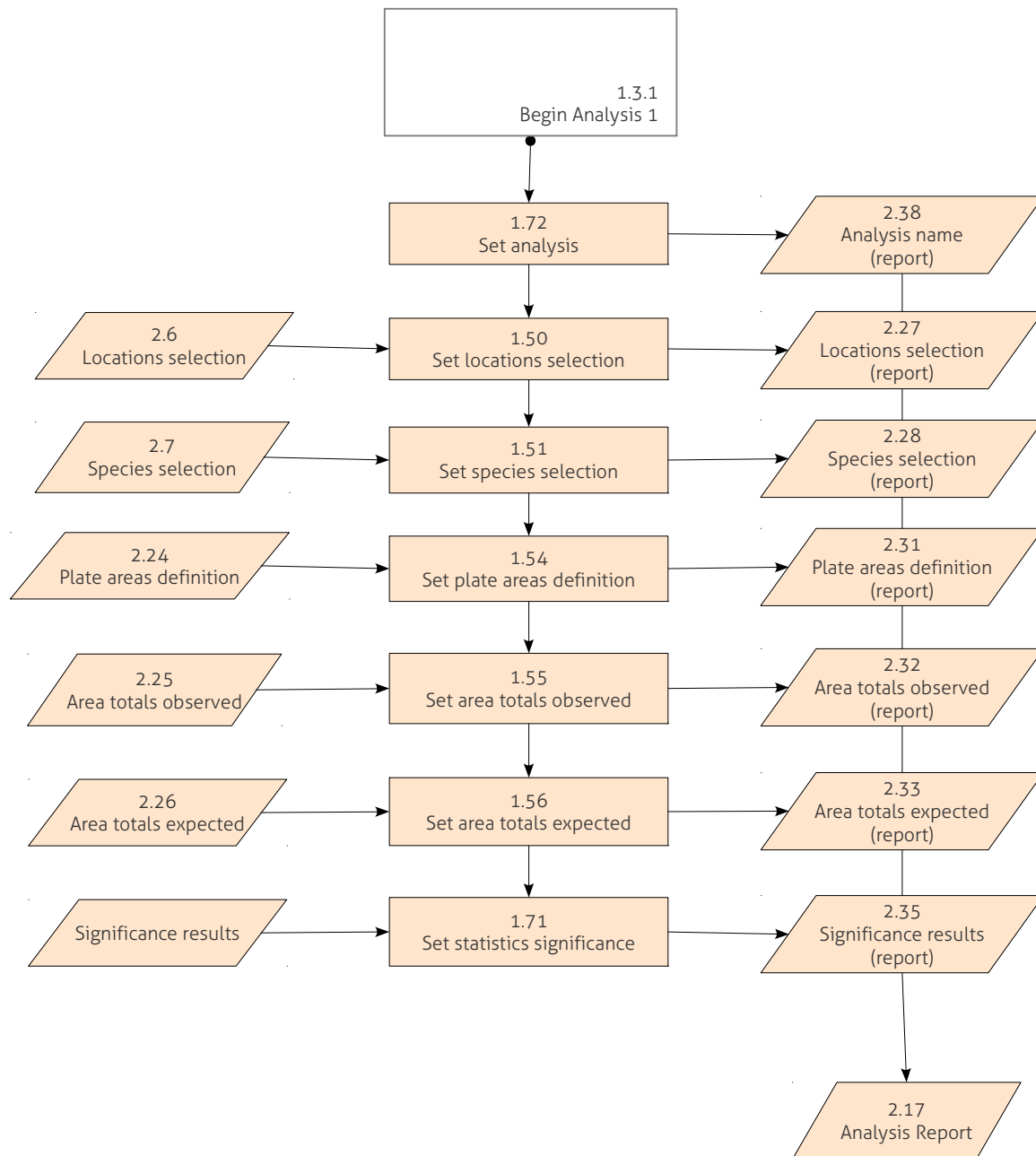
## 1.3.1 — analysis.spot\_preference.Begin



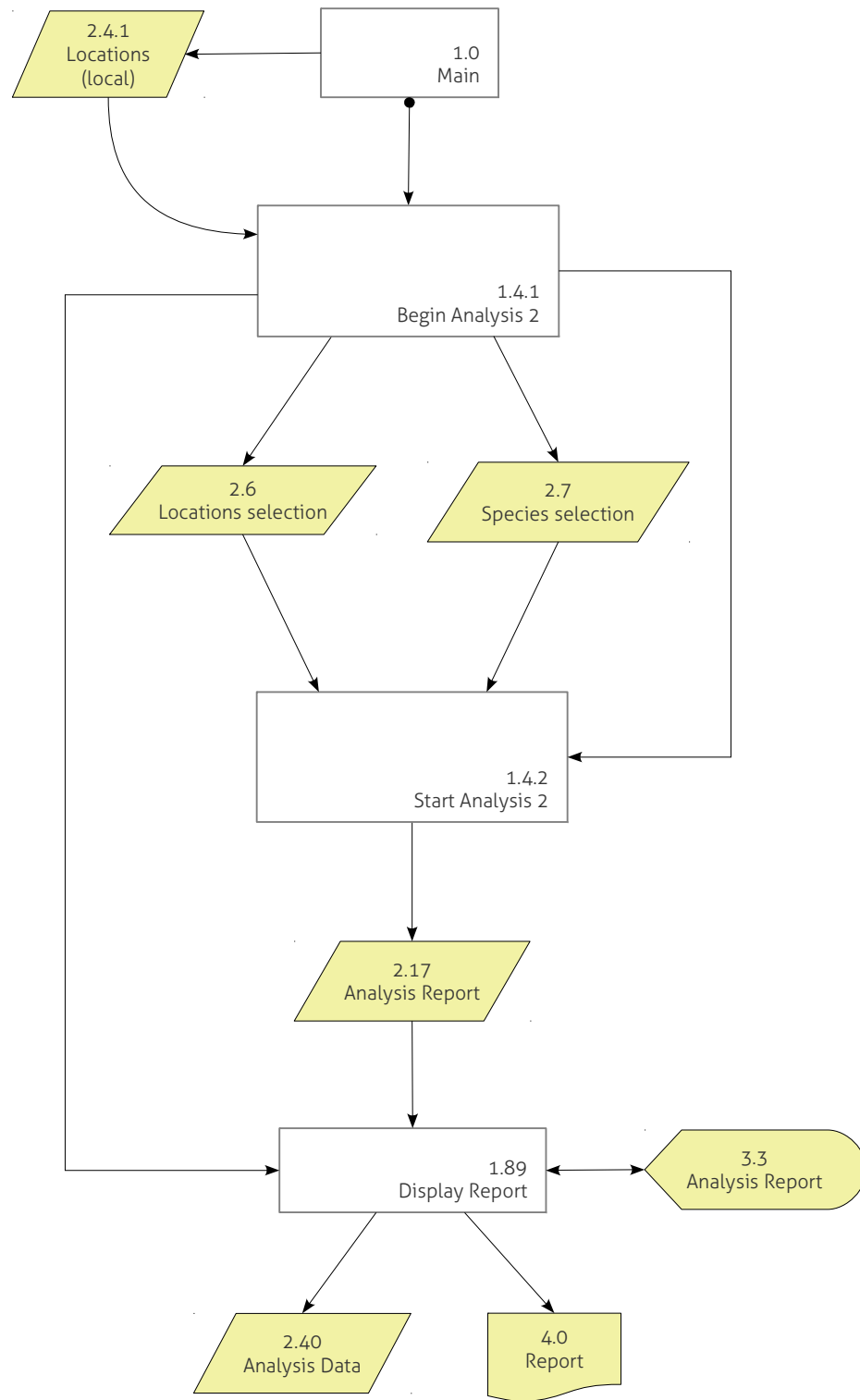
## 1.3.2 — analysis.spot\_preference.Start



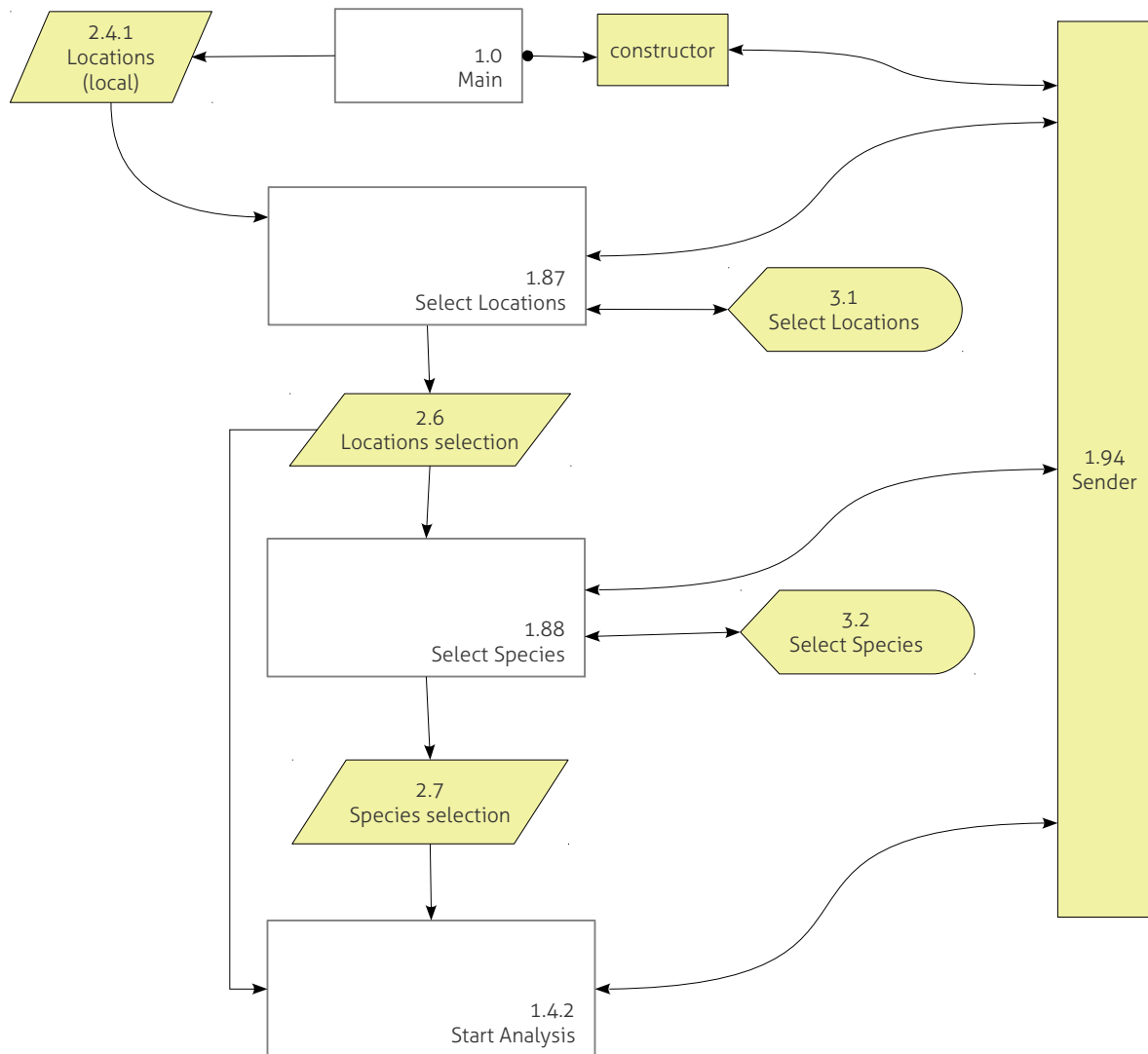
## 1.13 — analysis.spot\_preference.generate\_report



## 1.4 — analysis.attraction\_intra

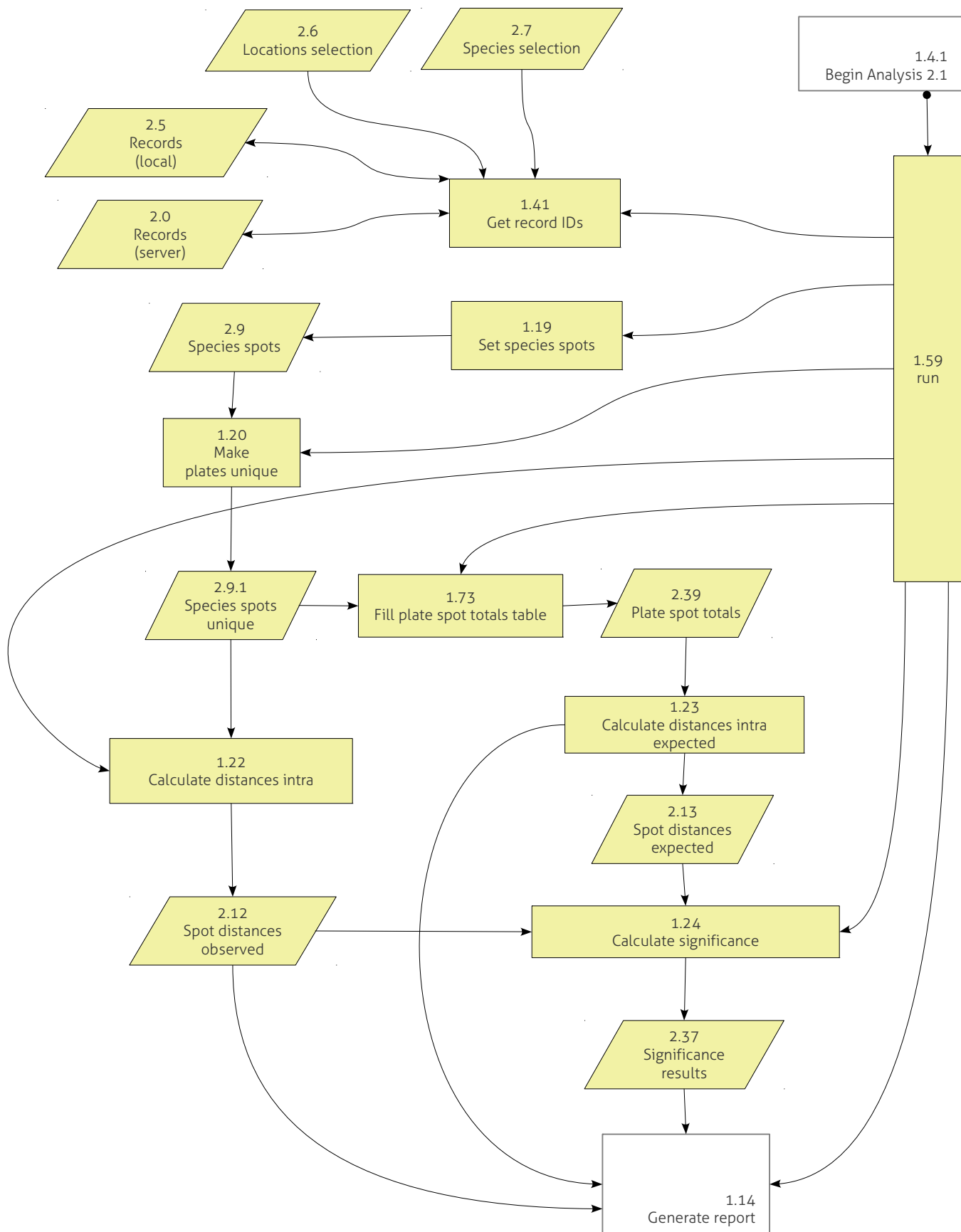


## 1.4.1 — analysis.attraction\_intra.Begin

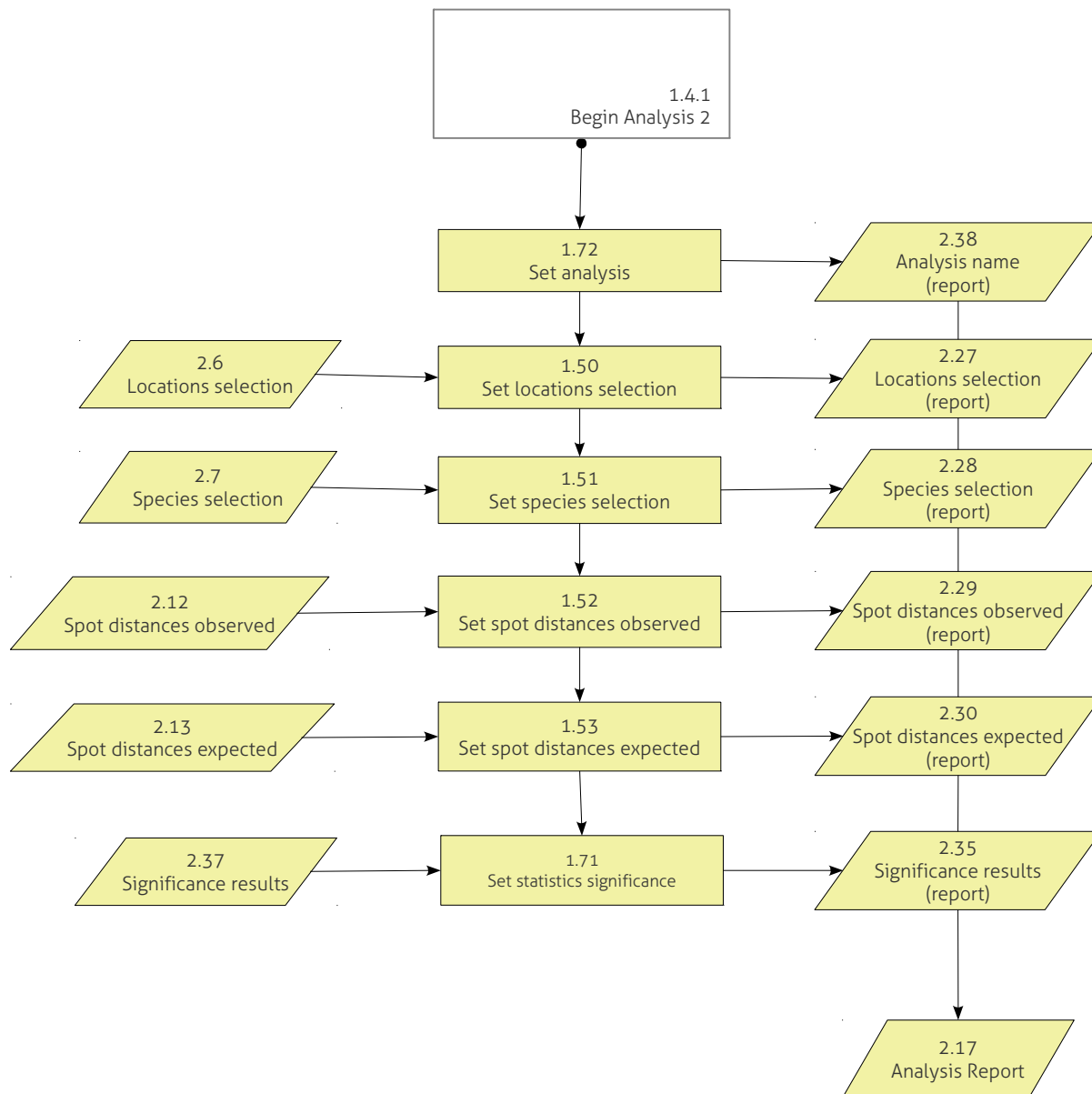




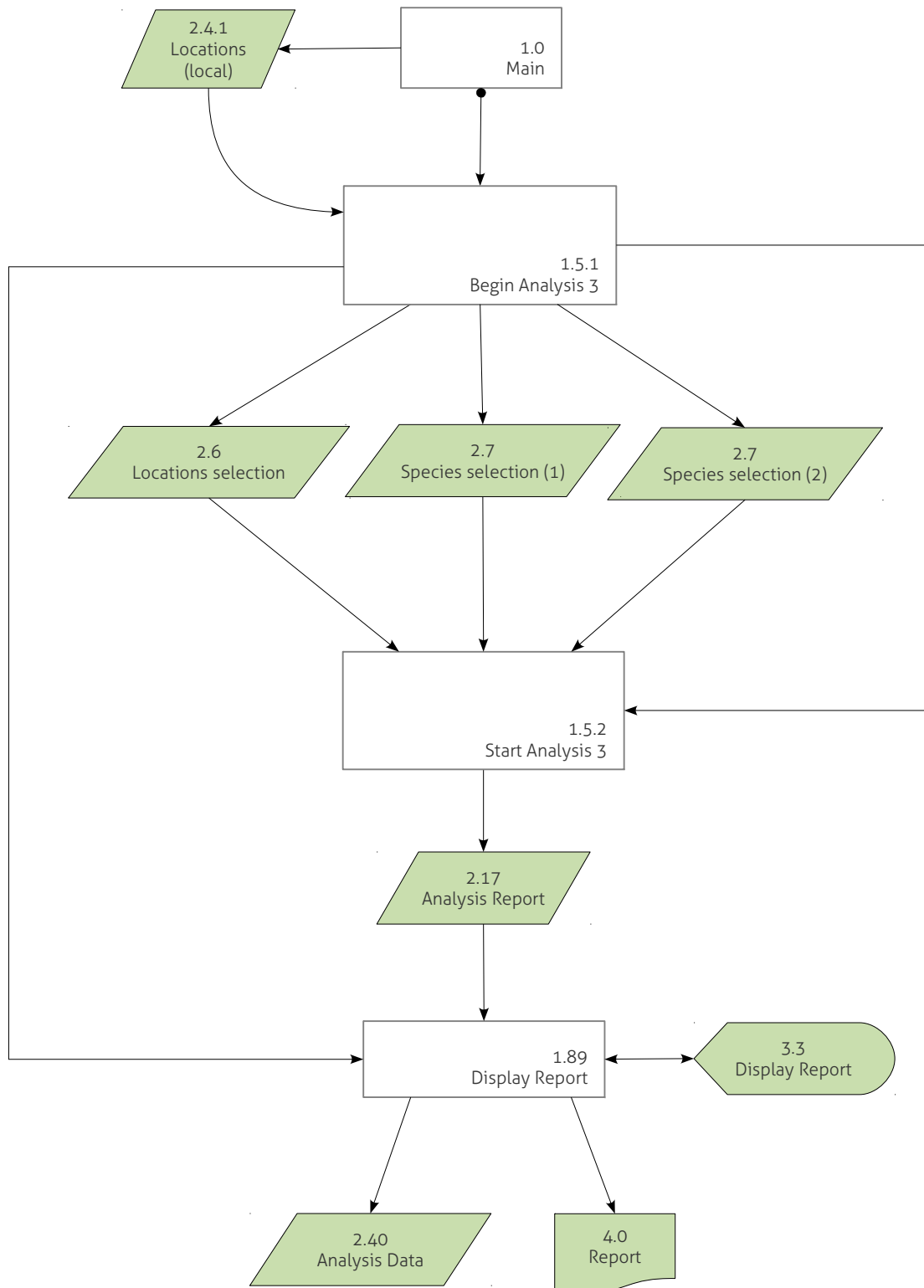
## 1.4.2 — analysis.attraction\_intra.Start



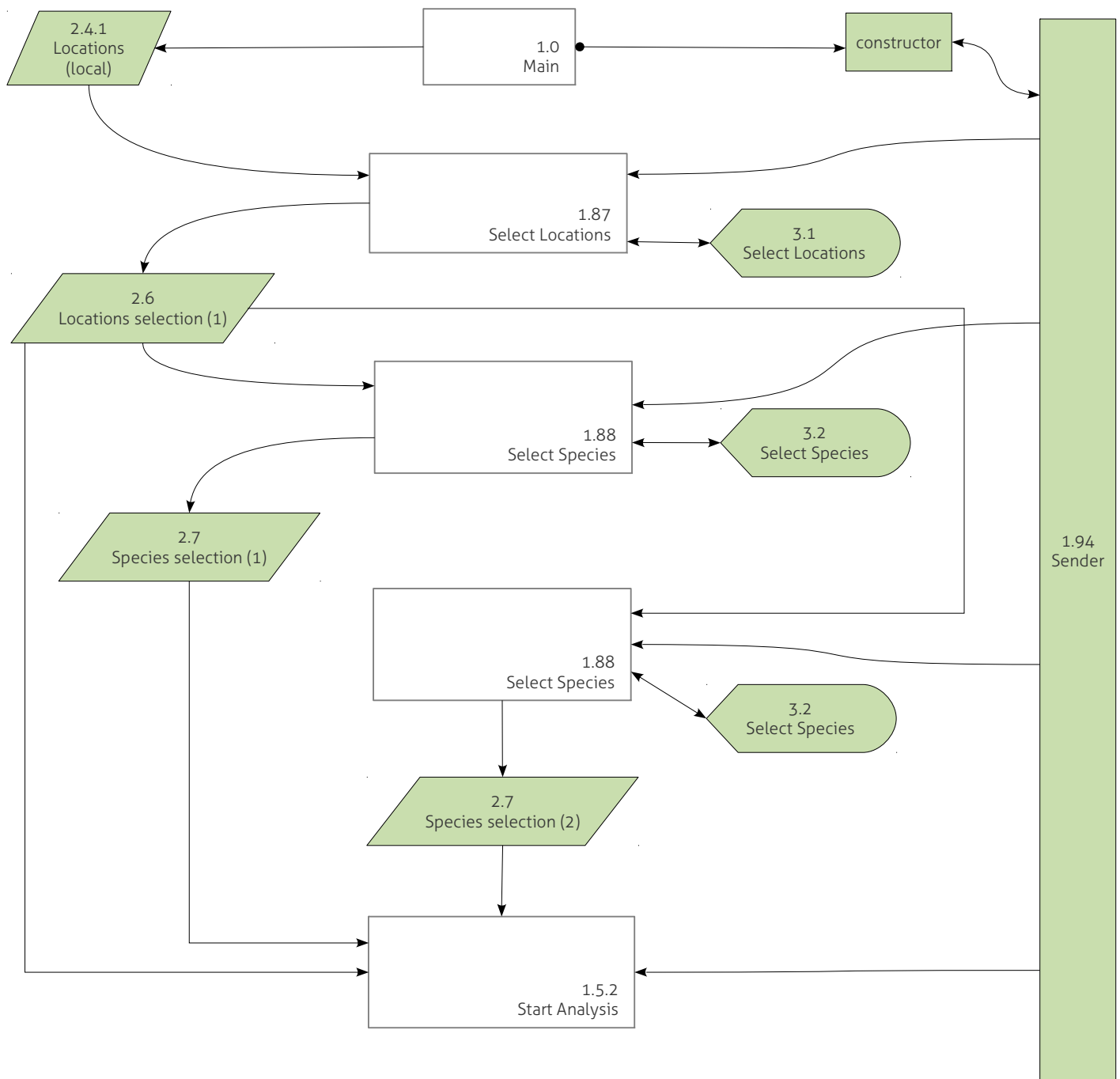
## 1.14 — analysis.attraction\_intra.generate\_report



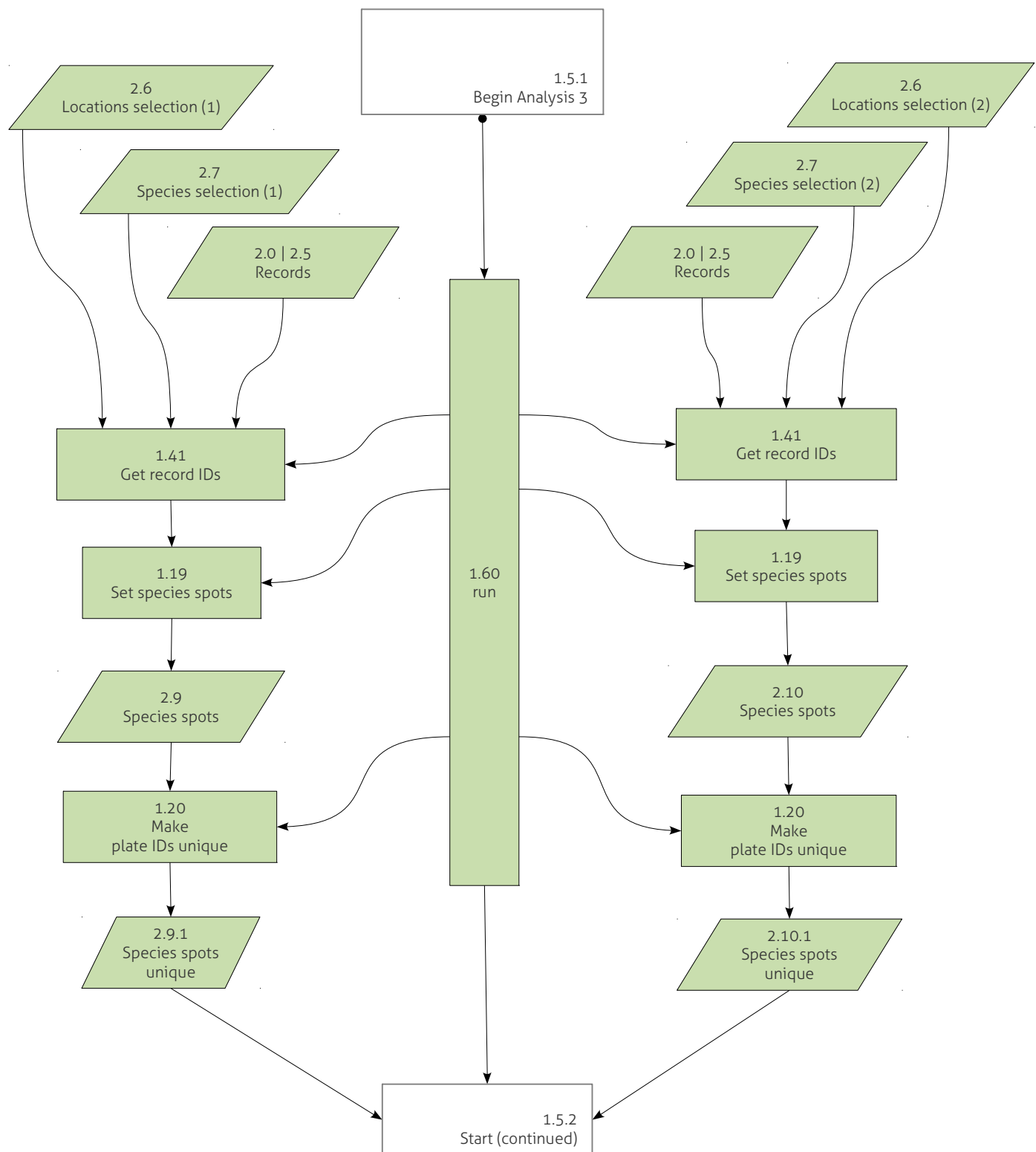
## 1.5 — analysis.attraction\_inter



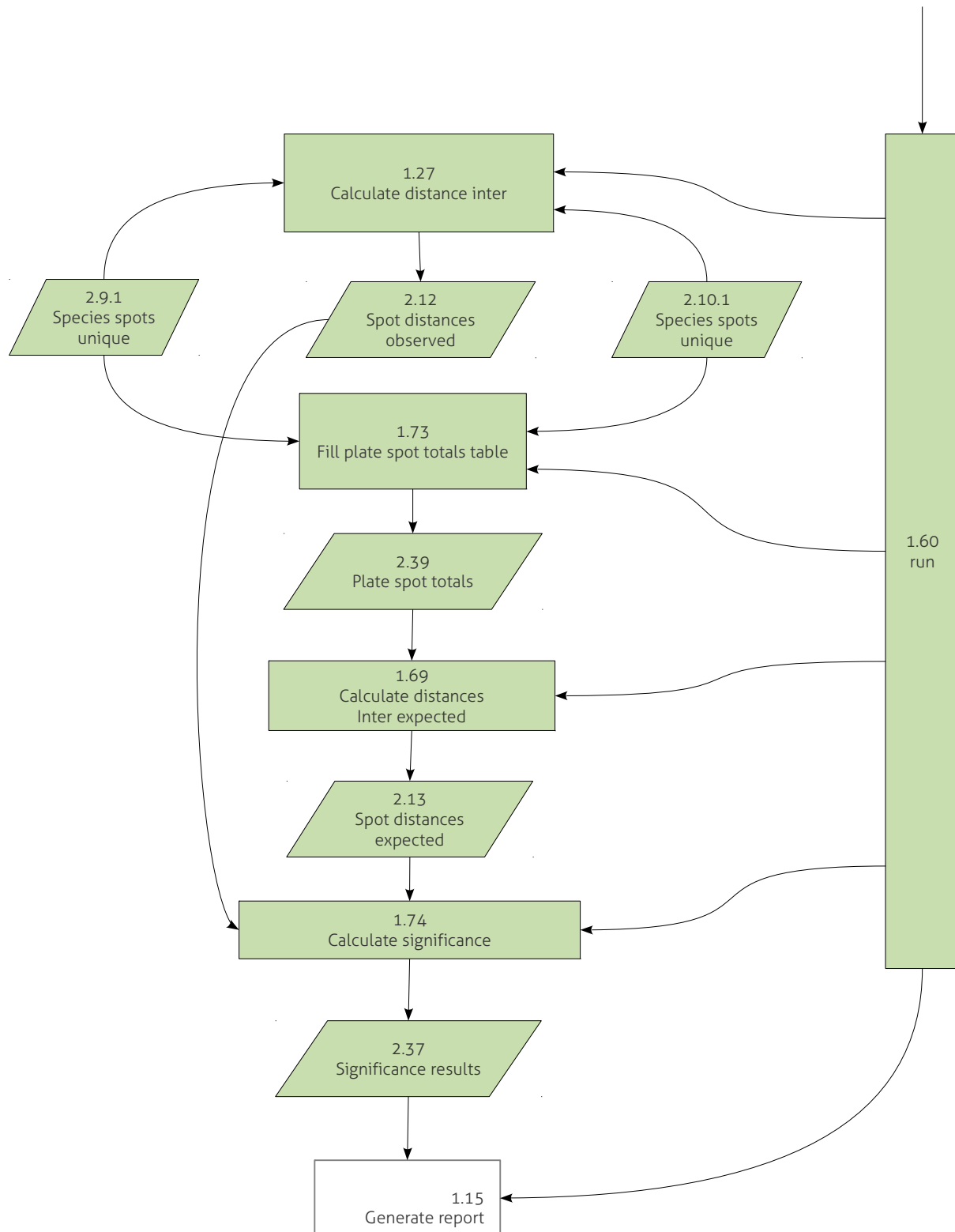
## 1.5.1 — analysis.attraction\_inter.Begin



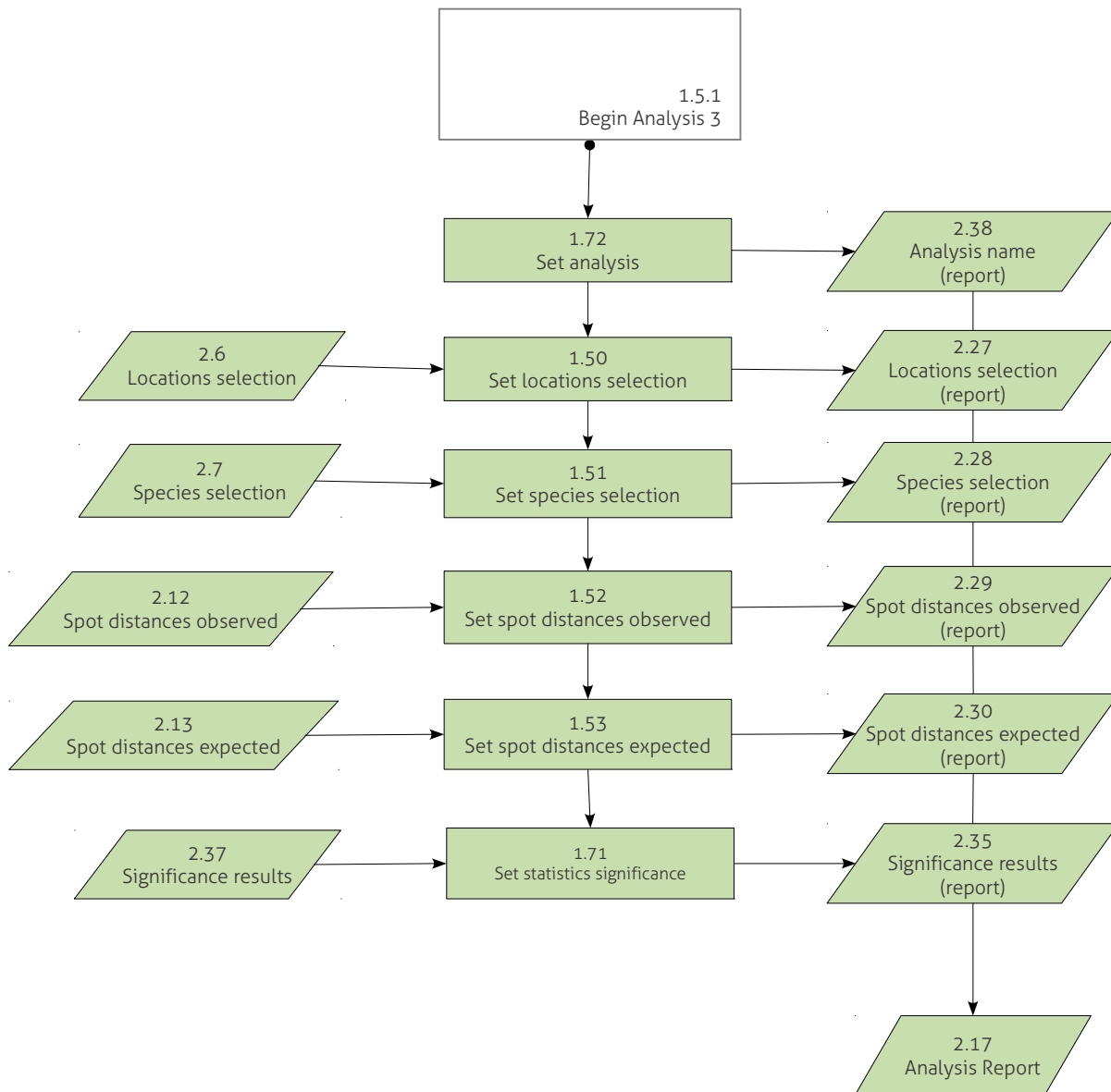
## 1.5.2 — analysis.attraction\_inter.Start



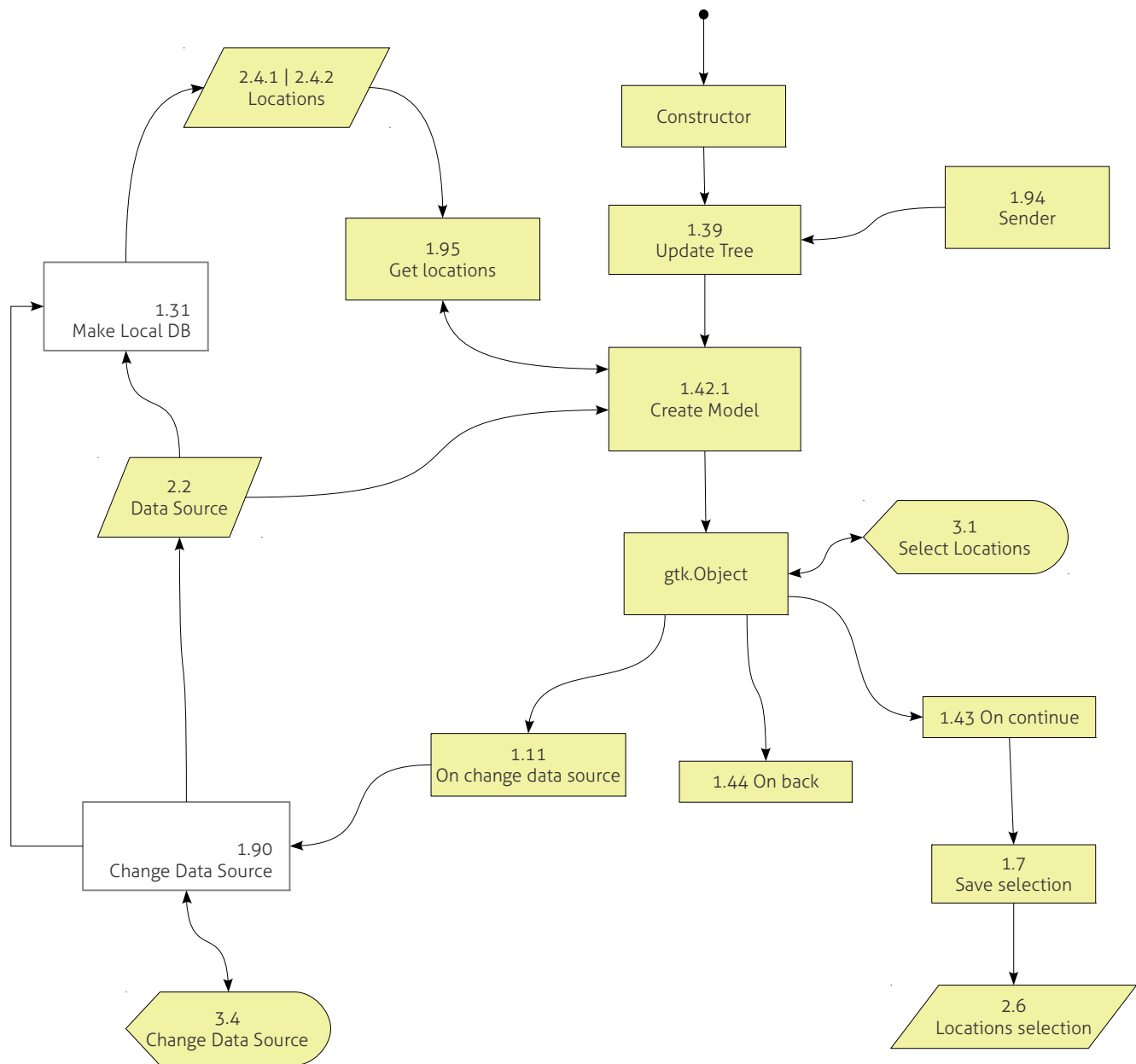
## 1.5.2 — analysis.attraction\_inter.Start (continued)



## 1.15 — analysis.attraction\_inter.generate\_report



## 1.87 — gui.SelectLocations





## 1.88 — gui.SelectSpecies

