
Minimum Data Requirements Documentation

Release 0.0.1

GICHD

May 28, 2018

Contents

1	Introduction	1
2	Purpose	3
3	Activities (NTS/TS/Clearance/BAC/EOD etc.)	5
4	Mine/ERW contaminated area/location	7
5	Land release product	9
6	Quality assurance visit	11
7	Risk Education	13
8	Accident	15
9	Victim	17
10	Indices and tables	19

CHAPTER 1

Introduction

The GICHD has initiated a process to define a set of minimum data requirements for mine action that will be submitted as a proposal for a TNMA and will eventually accompany IMSMA Core.

We are developing the minimum data requirements to ensure that the data necessary to generate information that fulfill requirements resulting from standards and conventions is available from all mine action programs. A draft set of data requirements have been developed based on the requirements of APMBC, CCM and IMAS together with certain donors and operators global reporting requirements.

The draft version of the minimum data requirements is listed here and the final set of minimum data requirements together with definitions for the terms, will be used to fill each field of data form in our proposal for a new TNMA.

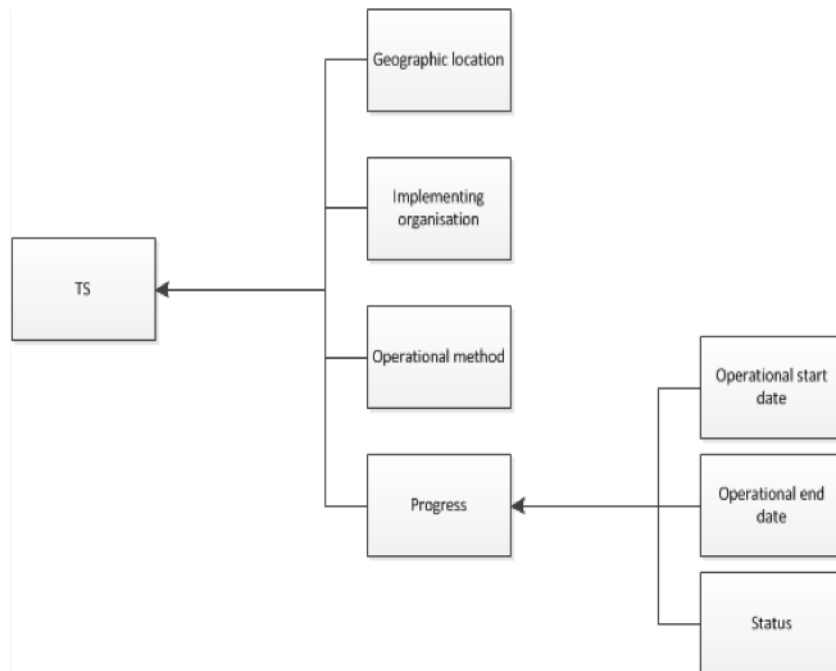
CHAPTER 2

Purpose

- Standard for data collected and analysed in all mine action programs
- Designed to meet information requirements resulting from standards and treaties (APMBC, CCM, IMAS)
- Not designed to fulfil all information requirements of any program
- A minimum set of data to be collected by mine action programs
- Agreed definitions for terms and measurements
- Common structure for storing minimum data that will be integrated into IMSMA Core

Activities (NTS/TS/Clearance/BAC/EOD etc.)

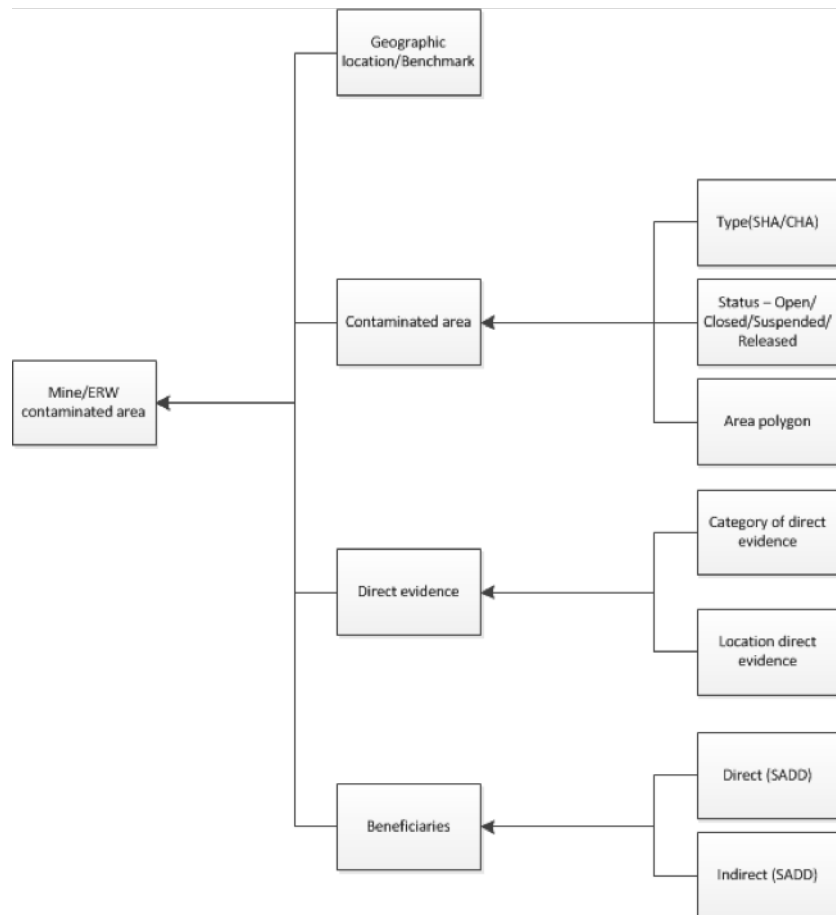
Data	Description
Graphic Location	Reference point coordinates of all activities
Implementing Organization	Organisation performing activity
Operational method	Operational method used during activity
Progress	Start and end date of activities
	Status of activities



CHAPTER 4

Mine/ERW contaminated area/location

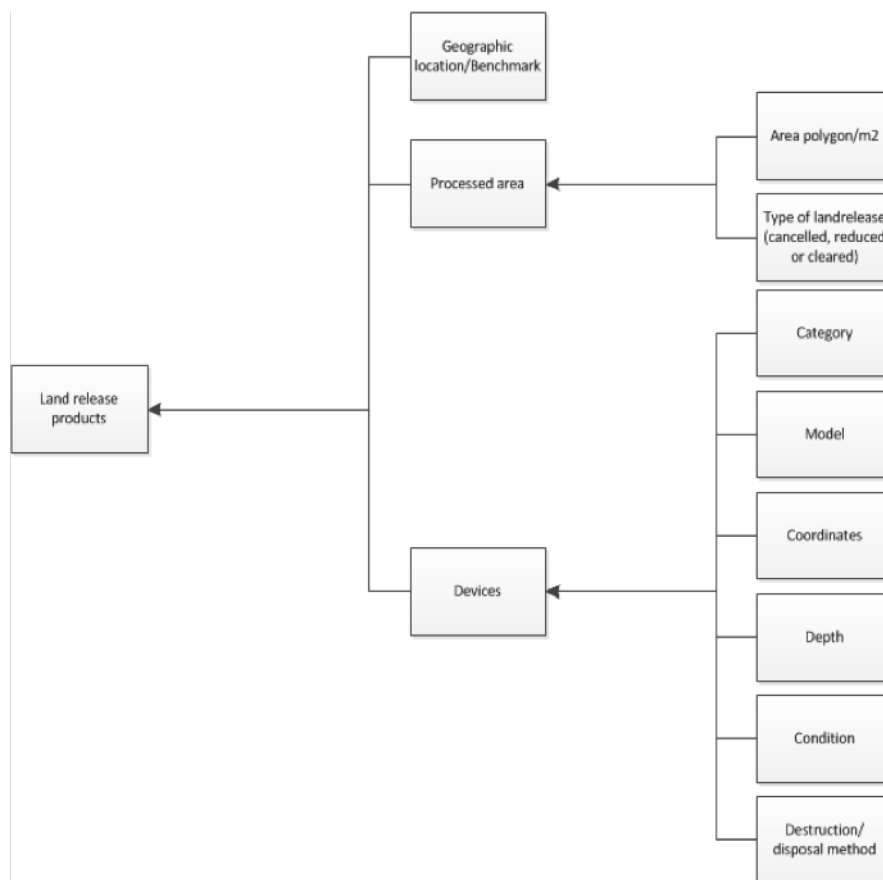
Data	Description
Graphic Location/Benchmark	Benchmark coordinates
Contamination Area	Coordinates of perimeter
	Status (open, closed, handed over)
	Type of area(SHA/CHA)
Direct Evidence	Category of devices suspected or confirmed in each area
	Type and location of direct evidence found
Beneficiaries	Expected/confirmed beneficiaries of the release of each SHA/CHA



CHAPTER 5

Land release product

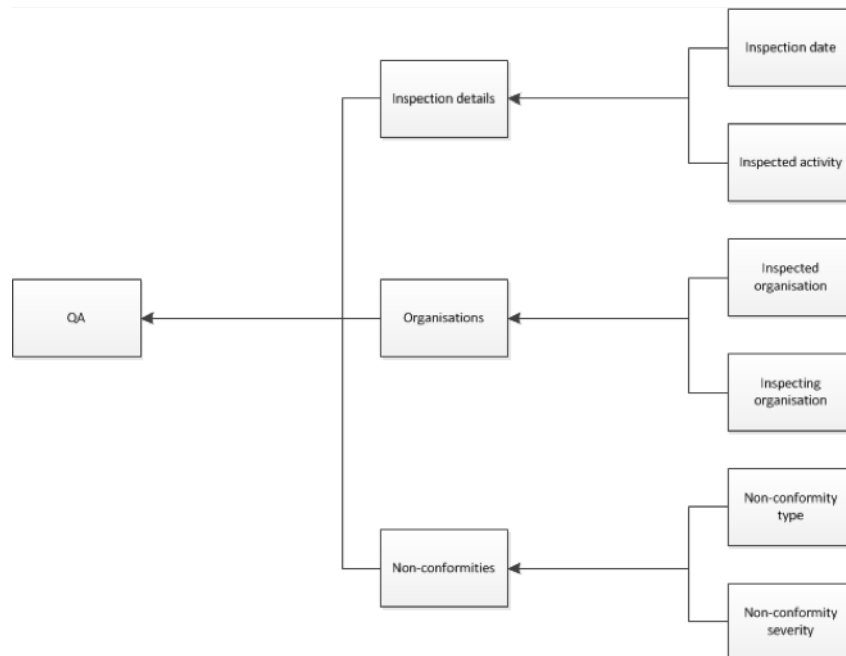
Data	Linked
Graphic Location	Benchmark and perimeter of all cancelled/reduced/cleared areas
Device	Depth to which an area is cleared
	Coordinates of all devices found
	Category and model of devices found and destroyed
	Condition of devices found
	Depth at which devices have been found



CHAPTER 6

Quality assurance visit

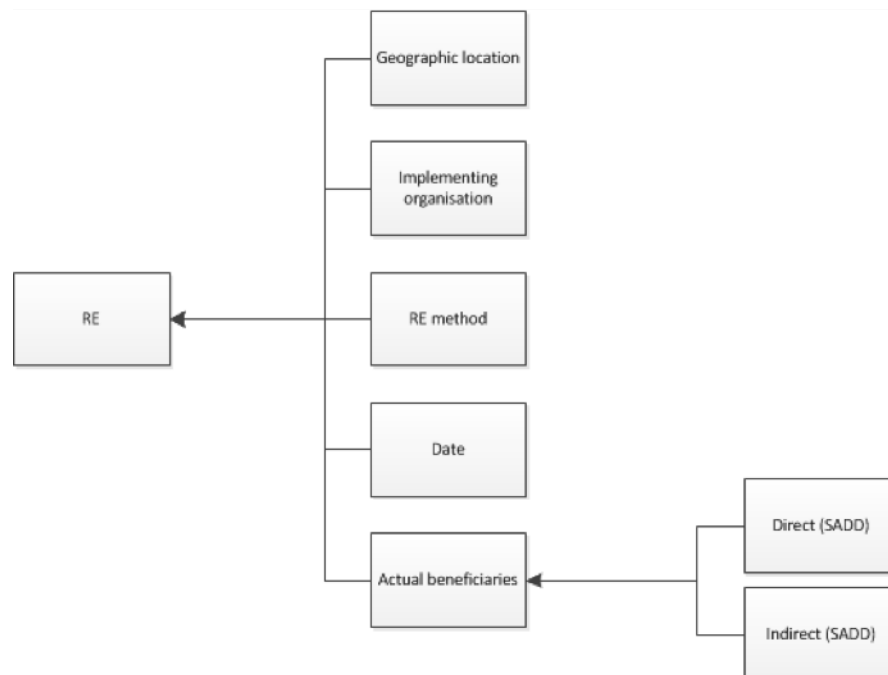
- Date of QA visit
- Activity inspected during visit
- Organisation inspected
- Organisation performing inspection
- Type and severity of any nonconformities found
- Measures taken as a result of an inspection



CHAPTER 7

Risk Education

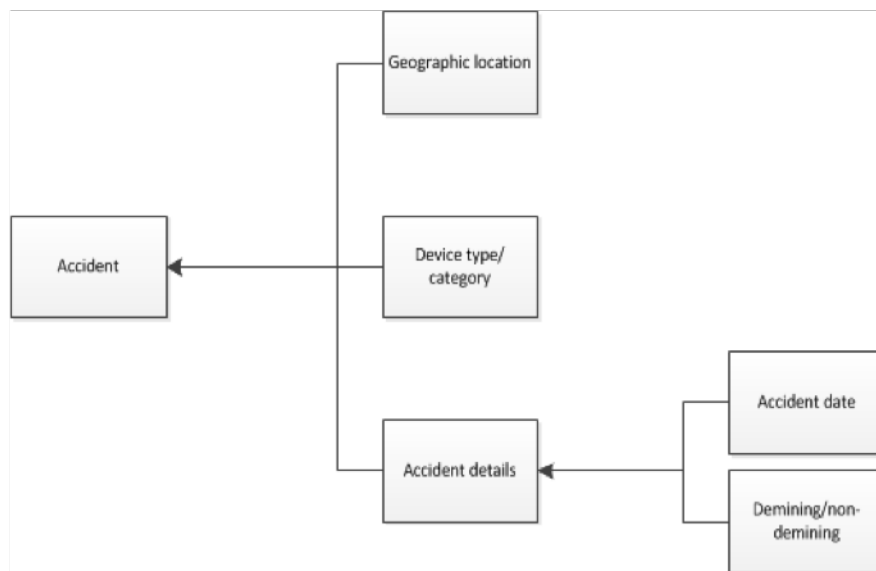
- Coordinates of the location of RE
- Date of RE
- Organisation performing RE
- Method used to deliver RE
- Beneficiaries of RE



CHAPTER 8

Accident

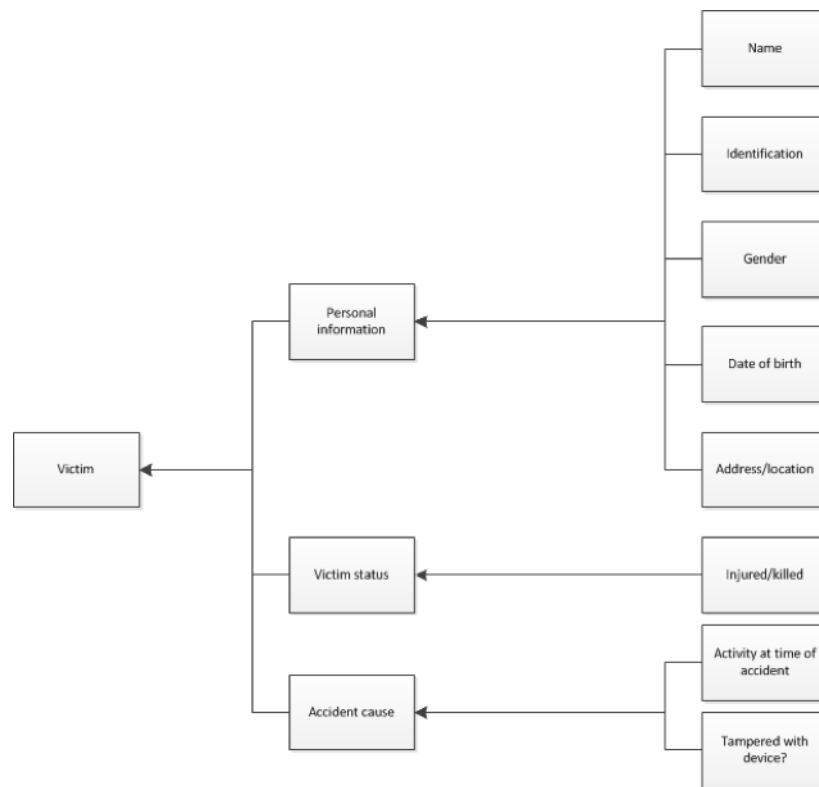
- Coordinates of location of accident
- Date of accident
- Category of device causing accident
- Demining or mine accident



CHAPTER 9

Victim

- Name
- Gender
- Date of birth
- Address
- Status (injured/killed)
- Activity of victim at time of accident
- Whether victim tampered with device causing accident



CHAPTER 10

Indices and tables

- `genindex`
- `modindex`
- `search`