
MacAdmins Community Documentation

Release

Dec 07, 2017

1	General Mac Knowledge	3
1.1	Apple Support Knowledge Base	3
1.2	Packaging	16
1.3	macOS Installation	17
1.4	macOS Configuration	18
1.5	Files and Storage	19
1.6	Peripherals	21
2	Integration	25
2.1	Active Directory	25
3	Jamf Pro	29
3.1	Introduction	30
3.2	Configure AWS	30
3.3	Install the JSS	34
3.4	Redirecting from 8443 to 443	37
3.5	Conclusion	38
3.6	Jamf Resources	38
3.7	Open Source and Jamf	39
3.8	JSS Tuning	40
3.9	Configuring Cloud Distribution Points	41
3.10	AutoPkg: Word Example	46
3.11	Infrastructure Manager	54
3.12	Upgrade JSS, the Manual way	60
3.13	Restrict installation of macOS Sierra	61
4	AirWatch	71
4.1	Using AirWatch API	71
5	Puppet	75
5.1	Additional Resources	75
5.2	Additional Information	76
5.3	Basic Configuration	76
5.4	Getting Started	78
6	Profiles and Settings	83
6.1	macOS Updates	83

7	Applications	85
7.1	Google Chrome	85
7.2	Microsoft Office 2016	86
7.3	SQL Clients	88
8	Security	91
8.1	Antivirus	91
9	About MacAdminsDoc	93
9.1	Contributing	93
9.2	License	94
9.3	MacAdmins Resources	95
9.4	Tools for MacAdmins	95
10	Notable Contributors	97
10.1	ftiff	97
10.2	mactroll	98
10.3	mosen	98

Welcome to the MacAdmins Documentation.

The goal of this website is to assemble best-practices and useful docs found from the web. It is curated by top-notch MacAdmins.

It is dedicated to Investigate, Clarify and Resolve key issues in managing Macs.

It is independent and welcomed to every MacAdmin.

Think of a collection of pages that you would use as ultimate reference.

The goal of this repository is to:

- Help the beginners to learn the basics
- Help the veterans to keep current on technologies
- Provide a quick way to answer common questions
- Be an authoritative answer to endless discussions
- Be a checklist to assess the state of your current work

macOS is getting more and more used by Businesses. This means more and more non-Mac Admins need to learn how to administer Macs. Unfortunately, today only a few resources are available. They might give you technical answers, but to get the full experience, you need to understand the vision, or philosophy. It's like using open source projects and embracing the GNU philosophy.



MacAdmins **Doc** is licensed under a [Creative Commons Attribution-ShareAlike 4.0 International License](#)

1.1 Apple Support Knowledge Base

- Edit and Share 4K video with iMovie
- Edit and Share Video at 60 frames per second in iMovie
- How to delete an app that has a configuration profile on your iPhone, iPad, or iPod touch
- Change the name of a Bluetooth device
- If an external display doesn't work with your MacBook Pro (Retina, 15-inch, Mid 2015) or MacBook Air (11-inch, Early 2015) running OS X El Capitan v10.11
- Get help with resetting your iPhone
- About the App Store on your Apple TV (4th generation)
- If you can't use your Photos library in other apps
- About the OS X El Capitan v10.11.3 Update
- Set up your Apple TV (4th generation)
- Enter your account information again when changing the YouTube share destination in Final Cut Pro
- About the OS X El Capitan v10.11.1 Update
- About OS X Server 5.0.15
- Set up Find My iPhone, iPad, Apple Watch, and Mac
- Manage your Apple Music membership if you're using an Android phone
- Join Apple Music on your Android phone
- Get help with Apple Music on Android
- View the Holidays calendar for other regions
- About the security content of iOS 9.1

- If your Apple Watch won't charge or it won't turn on
- About the security content of iTunes 12.3.1
- About the security content of Keynote 6.6, Pages 5.6, Numbers 3.6, and iWork for iOS 2.6
- About the security content of OS X El Capitan 10.11.1, Security Update 2015-004 Yosemite, and Security Update 2015-007 Mavericks
- About the security content of OS X Server 5.0.15
- About the security content of Safari 9.0.1
- About the security content of watchOS 2.0.1
- About the security content of Xcode 7.1
- If custom alert sounds don't appear after upgrading to El Capitan
- If your country or region doesn't have Google Play, download the Apple Music app from the Apple website
- ' If some email messages or mailboxes are missing in Mail after upgrading to El Capitan <<https://support.apple.com/en-us/HT205382>>' _
- Charge your Siri Remote or Apple TV Remote
- About Apple Configurator 2.1
- If a project you created in iPhoto shows empty frames in Photos for OS X
- Email photos from iPhoto with your account that uses two-step verification
- Import and export different file formats with Numbers
- If you can't sign in with your Apple ID after you upgrade to iOS 9
- If you can't download iTunes for Windows using Microsoft Edge
- Create and manage your music collection in Apple Music on Android
- Create interlaced H.264 files in Final Cut Pro X and Compressor
- Update your iPad Pro (9.7-inch) from iOS 9.3 or 9.3.1 to iOS 9.3.2 or later
- Guest mode isn't available with some IPv6 configurations on AirPort devices
- About iPad keyboard
- Check the status of your library in Photos for macOS
- About APN and Cellular profile payloads in Apple Configurator 2.1
- Restore previous versions of iWork documents stored on iCloud Drive
- If inline images are missing from wiki pages hosted from OS X Server 5
- Charge your iPhone with your Smart Battery Case
- About Apple TV (4th generation) software updates
- Use VoiceOver on Apple TV (4th generation)
- Set up your devices to use two-factor authentication
- Change the watch face on your Apple Watch
- How to use your Apple Watch without your iPhone nearby
- Switch between apps using the Dock on your Apple Watch
- Use your Apple Watch as a remote control for your Apple TV or iTunes

- Status icons on Apple Watch
- Change the brightness and text size on your Apple Watch
- About your Apple Watch
- About the OS X El Capitan v10.11.2 Update
- If XAVC-S media from your Sony camera appears blank in iMovie for Mac
- Manage the cards that you use with Apple Pay
- Charge your Apple Watch using the Apple Watch Magnetic Charging Dock
- Apple Music and Family Sharing
- If you see error -54 when you sync with iTunes
- If your iPhone, iPad, or iPod touch won't turn on
- Update the firmware for your Kirkland Signature hearing aids
- If CoreAudioToolbox.dll is listed in the problem details when iTunes for Windows stops working
- If still images are solid green or black in the iMovie Viewer
- If you see error 53 and your iPhone or iPad gets stuck on the 'Connect to iTunes' screen
- Using Apple Music on Sonos
- Get help adding cards to Apple Pay
- Changes to iTunes U course material storage locations
- If you're missing Health data after restoring from an iCloud backup you made with iOS 9
- Set up CarPlay with your iPhone
- About the security content of iOS 9.2
- About the security content of iTunes 12.3.2
- About the security content of OS X El Capitan 10.11.2, Security Update 2015-005 Yosemite, and Security Update 2015-008 Mavericks
- About the security content of QuickTime 7.7.9
- About the security content of Safari 9.0.2
- About the security content of tvOS 9.1
- About the security content of watchOS 2.1
- About the security content of Xcode 7.2
- About EMV and Apple Pay for merchants
- If Photos for OS X stops responding when you create a card
- If your iPhone, iPad, or iPod touch won't turn on
- Printer and scanner software available for download for OS X Lion
- Share files between macOS and Windows on the same Mac
- About the security content of Security Update 2015-006 Yosemite
- If apps don't finish installing with Mobile Device Management (MDM) and iOS 9.2
- Ergonomics

- If you see the ‘This app cannot be assigned to a device’ alert in Configurator 2
- Take and edit photos with your iPhone, iPad, and iPod touch
- Use a Baum VarioUltra display with VoiceOver
- Clean the keyboard of your MacBook (Retina, 12-inch, Early 2015) and later
- If you’re asked to let Apple Music manage calls on your Android phone
- If you get an alert from BTK in Turkey saying that your IMEI isn’t registered
- Change the shipping address for print product orders in Photos for macOS
- About the Mac App Store Update for OS X Snow Leopard
- Manage your photo and video storage
- If your Xsan volume doesn’t automatically mount at startup
- If you see an error in iTunes on your Mac or PC
- If your iPhone 6s or iPhone 6s Plus battery percentage doesn’t update
- If your iPad Pro wakes unexpectedly when connected to a Smart Keyboard
- About the security content of tvOS 9.1.1
- About the security content of Safari 9.0.3
- About the security content of OS X El Capitan 10.11.3 and Security Update 2016-001
- About the security content of iOS 9.2.1
- Topics for the ACMT 2016 Mac Service Certification Exam (MAC-16A)
- Courses to study for the ACMT 2016 Mac Service Certification Exam (MAC-16A)
- Topics for the ACiT 2016 iOS Service Certification Exam (iOS-16A)
- Courses to study for the ACiT 2016 iOS Service Certification Exam (iOS-16A)
- Topics for the Apple Service Fundamentals Exam (SVC-16A)
- Courses to study for the Apple Service Fundamentals Exam (SVC-16A)
- Exams and courses that you need to service iOS products
- Find audio-described content in the iTunes Store
- About iCloud Photo Library and My Photo Stream
- Apple FIPS Cryptographic Modules v6.0 for iOS 9
- How do I accept Apple Pay in my store
- Apple FIPS Cryptographic Modules v6.0 for OS X El Capitan v10.11
- Set up your new Mac
- About the OS X El Capitan v10.11.4 Update
- Use iCloud Drive or iBooks to access your PDF files, ePub files, and books
- Merchant training for Apple Pay
- If installation of Windows 10 on your Mac stops at RealTek software
- Keep your contacts up to date on all of your devices with iCloud
- Stop older Apple Remotes from controlling your Apple TV (4th generation)

- Where to get answers about your Mac
- Apple security updates (2013)
- If user profiles don't finish installing after updating to OS X Server 5.0.15
- Change the SMB connection limit in OS X Server 5
- Apple security updates (2014)
- Help your child set up an iPhone, iPad, or iPod touch
- Import XF and XF-AVC media from Canon cameras with Final Cut Pro X
- If Time Machine doesn't appear correctly on one of your Mac displays
- If you can't send an email in the Mail app, because the compose window disappears and reappears
- Control VoiceOver with Trackpad Commander
- Uninstall QuickTime 7 for Windows
- Use Notes on your iPhone, iPad, and iPod touch
- Read and reply to messages with your Apple Watch
- If you see a "Windows installer package" error message when you try to uninstall iTunes from your PC
- Import Music Memos recordings into Logic Pro X
- Use more than one Apple Watch with your iPhone
- Import your notes and files to the Notes app
- Keep your notes secure with password-protection
- About the security content of Apple TV 7.2.1
- Turn on audio descriptions on your iPhone, iPad, or iPod touch
- Turn on audio descriptions on iPod nano
- Turn on audio descriptions in iTunes for Windows
- Turn on audio descriptions on your Apple TV
- Turn on audio descriptions on your Mac
- Create an album from a project in Photos for OS X
- About Apple USB-C to Lightning cable
- Be productive on your new Mac
- Delete photos on your iPhone, iPad, and iPod touch
- About the USB-C Multiport Adapter Update 1.0
- Use Reminders on your iPhone, iPad, or iPod touch
- Hide photos on your iPhone, iPad, iPod touch, or Mac
- If you can't open or save changes to a shared file
- If your Alchemy window doesn't show presets
- Automatically assign MIDI controller knobs, sliders, and other controls with Logic Pro X 10.2.2
- Get help with missing photos
- About Managed Apple IDs for education

- [Get your music collection on all of your devices](#)
- [If you see error -5000, -69, 13010, or 13014 when you sync music in iTunes](#)
- [Turn off packet signing for SMB 2 and SMB 3 connections](#)
- [If GarageBand for Mac won't open or play back your project](#)
- [Get an Apple Music Student Membership](#)
- [If GarageBand for iOS won't open or playback your project](#)
- [Read along with iBooks StoryTime on Apple TV](#)
- [Get help with the Photos app on your Mac](#)
- [About the Multithreading setting in Logic Pro X](#)
- [ATLAS frequently asked questions](#)
- [If the built-in display on your MacBook Pro \(Retina, 15-inch, Mid 2015\) doesn't turn on](#)
- [About the security content of Apple Software Update 2.2](#)
- [How to get a Tech ID](#)
- [Change your payment method from ClickandBuy](#)
- [About OS X Server 5.1](#)
- [About Classroom 1.1.2](#)
- [If you see a "VPN Using PPTP May Not Be Secure" alert](#)
- [About Configurator 2.2](#)
- [VPN Key Exchange Enhancements in iOS 9.3, OS X 10.11.4 and Server 5.1](#)
- [Get help with iMovie](#)
- [About subscriptions in Apple News](#)
- [About the security content of iOS 9.3](#)
- [About the security content of OS X El Capitan v10.11.4 and Security Update 2016-002](#)
- [About the security content of watchOS 2.2](#)
- [About the security content of tvOS 9.2](#)
- [How to download content from the cloud when using Optimized Storage](#)
- [About the security content of Safari 9.1](#)
- [About the security content of Xcode 7.3](#)
- [About the security content of OS X Server 5.1](#)
- [About the macOS Sierra 10.12.1 update](#)
- [Languages supported by VoiceOver](#)
- [About Apple Remote Desktop Client 3.8.5](#)
- [If OS X Server 3 and earlier doesn't display recent VPP purchases](#)
- [About collaboration for Pages, Numbers, and Keynote](#)
- [Add a song to a playlist in Apple Music without adding it to your library](#)
- [Set up your document in Pages](#)

- [Use Photos on your Mac](#)
- [If Boot Camp Assistant gives a “Not enough space” error](#)
- [If you can’t activate your iPhone](#)
- [Get started with Keynote Live](#)
- [If Final Cut Pro X doesn’t respond when you share to DVD](#)
- [About OS X wireless roaming for enterprise customers](#)
- [If you can’t activate your iPad 2 \(GSM model\) after you update to iOS 9.3](#)
- [Add photos to your project in Photos for OS X](#)
- [Get help with over-the-air iOS updates](#)
- [If hyperlinks don’t open in Safari, Mail, or Messages after updating to iOS 9.3](#)
- [About the security content of iBooks Author 2.4.1](#)
- [About the security content of iOS 9.3.1](#)
- [Use Thai Baht in the iTunes Store and App Store](#)
- [About the OS X El Capitan v10.11.5 Update](#)
- [Export and import wikis created with macOS Server](#)
- [“Duplicate these displays” not supported in Boot Camp running Windows 8.1 or Windows 10](#)
- [If Network User accounts do not receive profile updates while logged in](#)
- [About the security content of Xcode 7.3.1](#)
- [About the security content of iTunes 12.4](#)
- [Change the audio and notification settings on your Apple Watch](#)
- [Organize your classical music in iTunes](#)
- [About OS X Server 5.1.5](#)
- [About storage on your device and in iCloud](#)
- [If photos from an album or folder don’t sync correctly to your iPhone, iPad, or iPod touch](#)
- [Get help if you can’t deregister iMessage](#)
- [About the security content of tvOS 9.2.1](#)
- [About the security content of Safari 9.1.1](#)
- [About the security content of watchOS 2.2.1](#)
- [About the security content of OS X El Capitan v10.11.5 and Security Update 2016-003](#)
- [About the security content of iOS 9.3.2](#)
- [About Configurator 2.2.1](#)
- [How to access Chinese instruments and loops in GarageBand for iOS](#)
- [Using 4K displays, 5K displays, and Ultra HD TVs with your Mac](#)
- [If your installation stalls when you’re upgrading Classroom app](#)
- [Prepare to upgrade to Apple School Manager](#)
- [If MacBook Pro \(Retina, 13-inch, Early 2015\) becomes unresponsive when a web browser is running](#)

- If the Caps Lock key on your MacBook or MacBook Pro isn't working as expected
- View, change, or cancel your subscriptions in Israel, South Africa, or Turkey
- Apple Pay participating banks in Europe
- Apple Pay participating banks and card issuers in Asia-Pacific
- About the OS X El Capitan v10.11.6 Update
- When to use the Auto-Compensate Latency option in Logic Pro X
- Manage included Apple apps for your institution
- Prepare for changes to Xsan before you update to macOS Sierra
- Some Logic Pro X plug-ins might sound different in MainStage
- Logic Studio (2009)
- About Apple Teacher Program Registration
- Prepare for removal of PPTP VPN before you upgrade to iOS 10 and macOS Sierra
- Security update for mDNSResponder
- About the security content of AirPort Base Station Firmware Update 7.6.7 and 7.7.7
- Prepare your institution for iOS 10 and macOS Sierra
- Fonts included with macOS Sierra
- Verify your certificates for macOS Server
- Prepare for macOS Sierra 10.12 with Active Directory
- If your app doesn't start to install when you use Mobile Device Management (MDM)
- Use a Managed Apple ID with iTunes U
- Use Markup in Mail on your iPhone, iPad, or iPod touch
- Upgrade to OS X El Capitan
- About OS X Server v5.1.7
- macOS Sierra: Sophos Anti-Virus on-access scanner version 9.2.5 and earlier
- macOS Sierra: Yamaha Steinberg USB Driver version 1.9.9 and earlier
- OS X: When your computer spontaneously restarts or displays "Your computer restarted because of a problem."
- Use message effects with iMessage on your iPhone, iPad, and iPod touch
- Use Digital Touch on your iPhone, iPad, and iPod touch
- About the security content of iCloud for Windows 5.2.1
- About the security content of Safari 9.1.2
- About the security content of iTunes 12.4.2 for Windows
- About the security content of iOS 9.3.3
- About the security content of OS X El Capitan v10.11.6 and Security Update 2016-004
- About the security content of watchOS 2.2.2
- About the security content of tvOS 9.2.2
- Use iMessage apps on your iPhone, iPad, and iPod touch

- Scribble on your Apple Watch
- Apple Thunderbolt 3 (USB-C) to Thunderbolt 2 Adapter requires Thunderbolt 3
- Thunderbolt networking over USB-C requires Thunderbolt 3
- Use the Control Center on your Apple Watch
- If you can't create accounts with email addresses that use the '+' or '.' character
- Upgrade your institution to Apple School Manager
- About SOS on Apple Watch
- If you see a message that says you signed up for Apple Music through both your mobile phone service provider and Apple
- Add your Desktop and Documents files to iCloud Drive
- About time-zone updates for iOS 10 or later, watchOS 3 or later, and tvOS 10 or later
- Share your notes
- Switch between apps using the Dock on your Apple Watch
- Use Siri on your Mac
- Automatically unlock your Mac with your Apple Watch
- Free up storage space on your Mac
- Watch video using Picture in Picture on your Mac
- Use tabs with apps on your Mac
- Use the Breathe app
- About iMessage and SMS/MMS
- Learn more about your AirPods with charging case
- Use your AirPods
- Charge your AirPods with charging case and learn about battery life
- Share your Activity with your Apple Watch
- Manage Personalized Recommendations
- Set up your Medical ID in the Health app on your iPhone
- Enjoy your Memories in Photos
- If your Apple Watch is lost or stolen
- Use Display Accommodations on your iPhone, iPad, and iPod touch
- About the security content of iOS 9.3.4
- About macOS Server 5.2
- Use SFTP to upload student, staff, and class data to Apple School Manager
- Use a Handy Tech Active Star 40 with your iPhone, iPad, or iPod touch with VoiceOver
- Use Display Accommodations on your Apple TV (4th generation)
- Answer or make TTY calls from your iPhone
- Upgrade and migrate data on your macOS Server

- Use Single sign-on with your iOS device or Apple TV (4th generation)
- About iPhone 7 and iPhone 7 Plus splash, water, and dust resistance
- Use a GW Braille Sense Plus display with your iPhone, iPad, or iPod touch
- Digital camera RAW formats supported by iOS 10 and macOS Sierra
- Use your HIMS Smart Beetle display with VoiceOver on your iPhone, iPad, and iPod touch
- Use Touch ID on MacBook Pro
- Use the Touch Bar on your MacBook Pro
- About Location Services and Privacy
- Automate and remotely access your HomeKit accessories
- Printer and scanner software for OS X Mountain Lion
- Stream your iTunes Store movies or TV shows
- Use Typing Feedback on your iPhone, iPad, or iPod touch
- Use GPS and Location Services for apps on your iPhone, iPad, or iPod touch
- Charge your MacBook Pro with Thunderbolt 3
- Detect and block spam phone calls with third-party apps
- Mac computers in USB Target Disk Mode via USB-C appear as “unknown” in Windows
- About People in Photos on your iPhone, iPad, or iPod touch
- Start up your MacBook Pro by opening it or plugging it in
- About the security content of iOS 9.3.5
- If you’re asked to click Connect before reconnecting to a server
- How to daisy-chain USB 2.0 devices to Thunderbolt 3 ports
- Use Widgets on your iPhone, iPad, and iPod touch
- Cleaning your iPhone
- How updating a library for Final Cut Pro X 10.3 can affect your audio
- If your Bluetooth mouse doesn’t work during Windows installation
- Use shared storage with Final Cut Pro X 10.3
- About the security content of Security Update 2016-001 El Capitan and Security Update 2016-005 Yosemite
- About the security content of Safari 9.1.3
- Find and organize emails on your iPhone, iPad, or iPod touch
- About Apple Configurator 2.3
- About the security content of Xcode 8
- About the security content of watchOS 3
- About the security content of tvOS 10
- About the security content of iOS 10
- Manage Exchange meeting invitations on your iPhone, iPad, or iPod touch
- About the security content of iOS 10.0.1

- [About the security content of iCloud for Windows 6.0](#)
- [iTunes Gift Card Scams - Official Apple Support](#)
- [Get help transferring Suica cards to your iPhone or Apple Watch](#)
- [Using Suica on iPhone or Apple Watch in Japan](#)
- [Set up a Suica card in Apple Pay](#)
- [About the security content of Safari 10](#)
- [About the security content of iTunes 12.5.1 for Windows](#)
- [If some apps don't load on your iPhone, iPad, or iPod touch](#)
- [About the security content of macOS Sierra 10.12](#)
- [About the security content of macOS Server 5.2](#)
- [List of available trusted root certificates in iOS 10](#)
- [Use #images with Messages in iOS 10](#)
- [See a voicemail transcription on your iPhone](#)
- [If Pages, Numbers, or Keynote suddenly quit when you open them on your iPhone, iPad, or iPod touch](#)
- [If some apps don't load on your iPhone, iPad, or iPod touch](#)
- [About the Home button on iPhone 7 and iPhone 7 Plus](#)
- [List of available trusted root certificates in macOS Sierra](#)
- [List of available trusted root certificates in watchOS 3](#)
- [Apple School Manager release notes](#)
- [Connect with Thunderbolt 3 on your new MacBook Pro](#)
- [Hear Mickey Mouse or Minnie Mouse speak the time](#)
- [Switch from two-step verification to two-factor authentication](#)
- [About the security content of iOS 10.0.2](#)
- [If a Core Audio alert appears in GarageBand for iOS](#)
- [Use Apple School Manager and Profile Manager to assign Volume Store content](#)
- [Manage and delete contacts on your iPhone, iPad, or iPod touch](#)
- [Change the font size or zoom level of web pages in Safari](#)
- [Use mailboxes to organize emails on your iPhone, iPad, and iPod touch](#)
- [How to find your parked car with Maps on your iPhone](#)
- [Lists of available trusted root certificates in tvOS](#)
- [List of available trusted root certificates in tvOS 10](#)
- [About Subscriptions and Privacy](#)
- [How to use pro apps with Optimized Storage](#)
- [If you can't find your shared Final Cut Pro X media in iTunes](#)
- [Export XML from Final Cut Pro X 10.3 for Logic Pro X](#)
- [Using function keys on MacBook Pro with Touch Bar](#)

- [Pages for iOS release notes](#)
- [Pages for Mac release notes](#)
- [Numbers for Mac release notes](#)
- [Numbers for iOS release notes](#)
- [Keynote for iOS release notes](#)
- [Keynote for Mac release notes](#)
- [Verify installation of Pro Video Formats](#)
- [Prevent your Mac from downloading updates in the background](#)
- [Add a personal Apple ID as a contributor to a managed iTunes U course](#)
- [Use the TV app on your Apple TV \(4th generation\), iPhone, and iPad](#)
- [Connect with Thunderbolt 3 on your new MacBook Pro](#)
- [Use accessibility features with Touch Bar on your MacBook Pro](#)
- [Use accessibility features with Touch Bar on your MacBook Pro](#)
- [Use camera modes on your iPhone, iPad, and iPod touch](#)
- [Update your libraries for Final Cut Pro X 10.3](#)
- [If your iPhone 7 or iPhone 7 Plus enters recovery mode as you try to update](#)
- [About the security content of iOS 10.0.3](#)
- [About Final Cut Pro X and Motion plug-in compatibility](#)
- [Connect devices and displays with the Apple Thunderbolt 3 \(USB-C\) to Thunderbolt 2 Adapter](#)
- [Xsan 5 volumes might be temporarily inaccessible after some operations](#)
- [About the security content of Xcode 8.1](#)
- [About the security content of watchOS 3.1](#)
- [About the security content of tvOS 10.0.1](#)
- [About the security content of iOS 10.1](#)
- [About the security content of Safari 10.0.1](#)
- [About the security content of iCloud for Windows 6.0.1](#)
- [About the security content of iTunes 12.5.2 for Windows](#)
- [About the security content of macOS Sierra 10.12.1, Security Update 2016-002 El Capitan, and Security Update 2016-006 Yosemite](#)
- [Redeem your App Store Top-Up card in China](#)
- [If a DVD created in Final Cut Pro X, Motion, or Compressor is blank](#)
- [If your MacBook Pro \(15-inch, Late 2016\) doesn't start up correctly with Sharp PN-K321 display connected](#)
- [How to use the flashlight on your iPhone and iPod touch](#)
- [About the security content of iOS 10.1.1](#)
- [If you see a "No images are available" error message when you install Windows 10](#)
- [Turn off Voice Control on your iPhone](#)

- If images appear cropped in the viewer in Final Cut Pro X 10.3
- Availability of Apple programs for education and business
- About the macOS Sierra 10.12.2 Update
- iOS Compatibility with Cisco QoS Fastlane & Adaptive 802.11r
- Take and edit Live Photos
- Safety certifications for iPod touch batteries
- Replace your iPhone, iPad, or Apple Watch
- Share photos to Facebook from iPhoto and Aperture
- If a library won't update in Final Cut Pro X 10.3
- Using the Escape button on your MacBook Pro with Touch Bar
- If kernel_task is using a large percentage of your Mac CPU
- If your Xsan service doesn't work after you upgrade to macOS Sierra 10.12.2
- Organize and find your photos
- If Final Cut Pro X 10.3 doesn't open previously open libraries
- If you see an ISO file error while using Boot Camp to install Windows
- If you can't buy, redownload, or play 1080p video content from the iTunes Store
- Connect your Student Information System to Apple School Manager
- Install Audio Driver Update for Boot Camp to avoid issues with 2016 MacBook Pro speakers
- Upgrade to Xsan 5
- About iTunes U
- About the security content of Safari 10.0.2
- About the security content of iOS 10.2
- About the security content of macOS Sierra 10.12.2, Security Update 2016-003 El Capitan, and Security Update 2016-007 Yosemite
- About the security content of iCloud for Windows 6.1
- About the security content of tvOS 10.1 - Apple^Ce Support
- About the security content of iTunes 12.5.4 for Windows
- What does iCloud back up?
- About the security content of Transporter 1.9.2
- Preserve or migrate data for Apple Configurator 2
- Use the LG UltraFine 4K Display with your MacBook or MacBook Pro
- Use the LG UltraFine 5K Display with your Mac
- About the battery usage on your iPhone, iPad, and iPod touch
- Safari and WebKit ending support for SHA-1 certificates
- About the macOS Sierra 10.12.3 Update
- Apply plug-in effects to audio regions in Logic Pro X

- Work with track alternatives in Logic Pro X
- Turn off Hyper-V to use Windows 10 on your Mac
- Use HDR on your iPhone, iPad, and iPod touch
- Use Extreme Tuning in GarageBand for iOS
- Logic Pro X 10.2 – 10.2.4 release notes
- About the security content of Logic Pro X 10.3
- About the security content of GarageBand 10.1.5
- About the security content of iCloud for Windows 6.1.1
- About the security content of iOS 10.2.1
- About the security content of macOS Sierra 10.12.3
- About the security content of Safari 10.0.3
- About the security content of tvOS 10.1.1
- About the security content of iTunes 12.5.5 for Windows
- About the security content of watchOS 3.1.3
- If an alert in the TV app repeatedly asks you to connect your apps
- If text in Osaka font looks clipped in iPhoto projects
- Apple FIPS Cryptographic Modules v7.0 for iOS 10
- Apple FIPS Cryptographic Modules v7.0 for macOS Sierra 10.12
- Exchange “Pro Apps Bundle for Education” redemption codes

1.2 Packaging

1.2.1 Forgetting a Package

Forgetting a package is a good way to troubleshoot some behaviours. It doesn’t change anything on disk, but the computer will believe the package was never installed.

Installer.app/SWU

For OS X packages, installed by Installer.app or Software update, use `sudo pkgutil --forget [package_id]`. You can list current installed packages with `pkgutil --pkgs`

This will get updated at next recon to Inventory > Package Receipts > Installer.app/SWU.

Note: According to `pkgutil(1)`:

Discard **all** receipt data about package-id, but do **not** touch the installed files.
DO NOT use this command **from an** installer package script to fix broken package design.

Casper Suite

To change this (unrelated) list, you need to delete the relevant file in `/Library/Application Support/JAMF/Receipts`, then do a `sudo jamf recon`

This doesn't do anything but change inventory.

1.3 macOS Installation

1.3.1 Setup Assistant

Setup Assistant is also called "MacBuddy"

Setup Assistant Panes

Name	Log Name	Short Name	MDM Key	MDM Skip-able?	File Trigger
Choose Language				No	<code>/var/db/.AppleSetupDone</code>
Select Keyboard	SelectKeyboard			No	<code>/var/db/.AppleSetupDone</code>
Network Setup	SelectWiFiNetwork			No	<code>/var/db/.AppleSetupDone</code>
Transfer Data	MigrationWelcome		Restore	Yes	<code>/var/db/.AppleSetupDone</code>
Location Services	EnableCoreLocation		Location	Yes	<code>/var/db/.AppleSetupDone</code>
Apple ID and iCloud Sign-in	iCloudLogin		AppleID	Yes	<code>com.apple.SetupAssistant.plist</code>
Terms and Conditions	LicenseViewer		TOS	Yes	<code>/var/db/.AppleSetupDone</code>
Create User Account	CreateUserAccount			Yes*	<code>/var/db/.AppleSetupDone</code>
Automatically sending diagnostic information	DiagnosticsAndUsage		Diagnostics	Yes	<code>com.apple.SetupAssistant.plist</code>
Siri	EnableSiri		Siri	Yes	<code>/var/db/.AppleSetupDone</code>
Touch ID			Biometric	Yes	<code>/var/db/.AppleSetupDone</code>
Apple Pay			Payment	Yes	<code>/var/db/.AppleSetupDone</code>
Setting Up Your Mac	SettingUpYourMac			No	<code>/var/db/.AppleSetupDone</code>

*Initial User Creation can be skipped under certain conditions

Skipping Setup Assistant

With an MDM

Having a MDM can allow skipping some steps.

More info on MDM protocol [here](#) (search for `skip_setup_items`)

By messing with some files

Setup Assistant will only launch if `/var/db/.AppleSetupDone` is not present. Deleting this key will skip most of the steps.

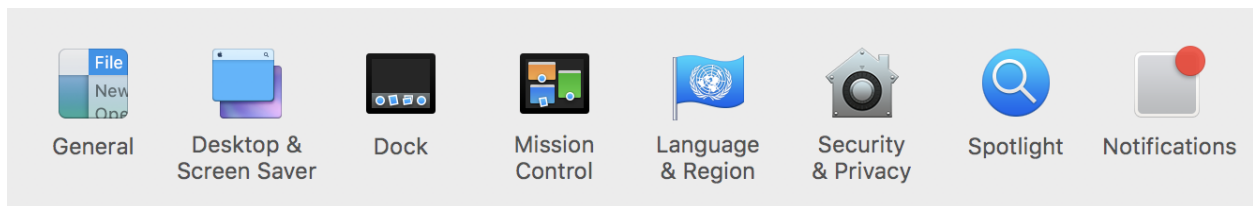
`/Users/[username]/Library/Preferences/com.apple.SetupAssistant.plist` will store iCloud/Apple ID setup and Diagnostic Information agreement. More info on [Rich's blog](#)

Mager Valp has an [interesting script](#) you might want to check.

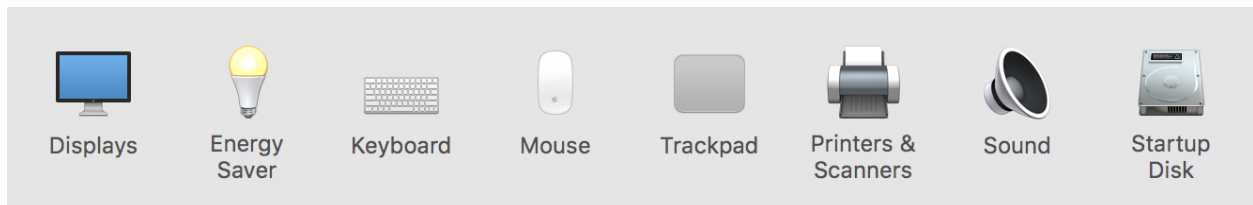
1.4 macOS Configuration

1.4.1 System Preferences

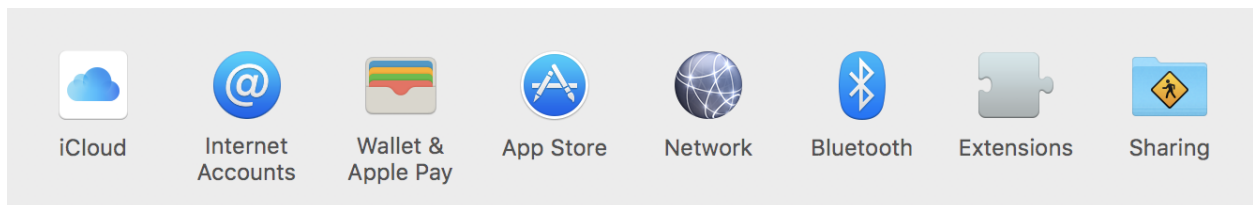
Personal



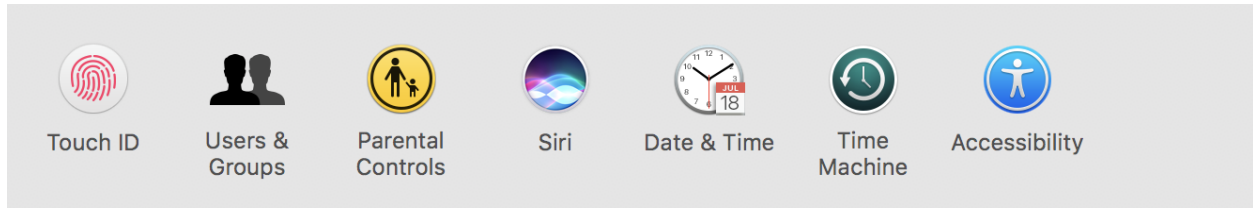
Hardware



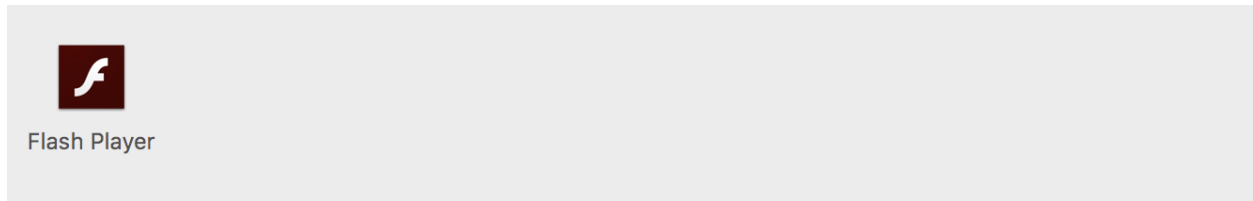
Network



System



Third Party



1.5 Files and Storage

1.5.1 Storage Structure

Partition Schemes

Acronym	Name	Description
APM	Apple Partition Map	This is the traditional Apple partitioning scheme used to start up a PowerPC-based Macintosh computer, to use the disk as a non-startup disk with any Mac, or to create a multiplatform compatible startup disk.
MBR	Master Boot Record	This is the DOS/Windows-compatible partitioning scheme.
GPT	GUID Partitioning Table	This is the partitioning scheme used to start up an Intel-based Macintosh computer.

Source: [diskutil\(8\)](#)

Filesystems

Acronym	Name	Description
APFS	APFS	
ExFAT	ExFAT	
Free Space (or free)	Free Space	
MS-DOS	MS-DOS (FAT)	
MS-DOS FAT12	MS-DOS (FAT12)	
MS-DOS FAT16	MS-DOS (FAT16)	
MS-DOS FAT32 (or fat32)	MS-DOS (FAT)	
HFS+	Mac OS Extended	
Case-sensitive HFS+ (or hfsx)	Mac OS Extended (Case-sensitive)	
Case-sensitive Journaled HFS+ (or jhfsx)	Mac OS Extended (Case-sensitive, Journaled)	
Journaled HFS+ (or jhfs+)	Mac OS Extended (Journaled)	

Source: [diskutil\(8\)](#)

APFS

APFS is the new FileSystem that was announced at WWDC '16. It will be available on all Mac and iOS devices in 2017.

It features awesome new and improved features such as:

- Clones
- Snapshots
- Space Sharing
- Encryption
- Crash Protection
- Sparse Files
- Fast Directory Sizing
- Atomic Safe-Save

Rich Trouton did a very interesting talk at MacAdUk. Grab it [here](#).

Source: [APFS Guide](#)

CoreStorage

Acronym	Name	Description
LVG	Logical Volume Group	
PV	Physical Volume	
LVF	Logical Volume Family	
LV	Logical Volume	

Source: [diskutil\(8\)](#)

1.6 Peripherals

1.6.1 Printing

On OS X, the printing subsystem is CUPS.

Ways to modify CUPS configuration

- System Preferences > Printers & Scanners
- <http://localhost:631/>
- `sudo lpadmin`

Options

Set default printer

```
sudo lpadmin -d [printer]
```

Enable Kerberos Authentication

```
sudo lpadmin -p [printer] -o auth-info-required=negotiate
```

You can eventually follow [this article](#) from Apple.

Change default options

To change defaults, use this command: `sudo lpadmin -p [printer] -o [option]=[value]`. For example: `sudo lpadmin -p Follow-Me -o XRBannerSheet=None`

List available options

```
Use lpoptions -p [printer] -l.
```

Notable options

Option	Values	Description
printer_is_shared	true/false	share printer
auth-info-required	“none”, “username,password”, “domain,username,password”, or “negotiate” (Kerberos)	Set to negotiate to allow Kerberos
media	Letter A4...	See here for more info
XRBannerSheet	*None AtStart	On Xerox, displays the cover-page with Job ID

More info [here](#)

Discovering options

This will allow you to make changes using a GUI, and find the right option.

Using GUI

1. Open print dialog
2. Create a preset
3. `execute defaults read ~/Library/Preferences/com.apple.print.custompresets.forprinter.[printer].plist [preset] > before.txt`
4. Make changes
5. Create a new preset
6. `execute defaults read ~/Library/Preferences/com.apple.print.custompresets.forprinter.[printer].plist [new_preset] > after.txt`
7. See differences with `diff before.txt after.txt`

Using CUPS Web

I found it quite interesting to follow this:

1. `lpoptions -p [printer] -l > before.txt`
2. Make the changes on <http://localhost:631/printers/> > Printer > Set default Options
3. Run `lpoptions -p [printer] -l > after.txt`
4. See differences with `diff before.txt after.txt`

Adding a printer

Network Printer

The command to install a printer is `lpadmin`. You will need to specify:

- `-E` to Enable the destination and accept jobs
- `-p [name]`: name of the printer
- `-v [uri]`: path to the queue ([smb://server/queue](#))
- `-P [PPD]`: path to PPD (usually in `/Library/Printers/PPDs/Contents/Resources/`)
- `-o [option]=[value]`: specify options

Example

```
#!/bin/bash
#
# Installs printer, using Xerox Drivers (Xerox_Print_Driver_3.52.0.pkg)
#
```

```

readonly LPSTAT='/usr/bin/lpstat'
readonly LPADMIN='/usr/sbin/lpadmin'
readonly CUPSENABLE='/usr/sbin/cupsenable'
readonly CUPSACCEPT='/usr/sbin/cupsaccept'

#####
# Add printers using cups
# Globals:
#   LPSTAT
#   LPADMIN
#   CUPSENABLE
#   CUPSACCEPT
# Arguments:
#   name
#   uri
#   ppd
# Returns:
#   None
#####

add_printer() {

    local name="$1"
    local uri="$2"
    local ppd="$3"

    if ! ${LPADMIN} -E -p "${name}" \
        -v "${uri}" \
        -P "${ppd}" \
        -o printer_is_shared=false \
        -o auth-info-required=negotiate \
        -o XRBannerSheet=None \
        -o media=iso_a4_210x297mm; then
        echo "ERROR: ${name}: Unable to lpadmin (add printer)" >&2
        exit -1
    fi

    # cupsaccept and cupsenable are not needed before of '-E'. I don't remember why I
    ↪included them.
    if ! ${CUPSACCEPT} "${name}"; then
        echo "ERROR: ${name}: Unable to cupsaccept." >&2
        exit -1
    fi

    if ! ${CUPSENABLE} "${name}"; then
        echo "ERROR: ${name}: Unable to cupsenable." >&2
        exit -1
    fi
}

if (! ${LPSTAT} -v "Follow-Me"); then
    add_printer "Follow-Me" \
        "smb://printserver.fti.io/Follow-Me%20Xerox%20(PCL6)" \
        "/Library/Printers/PPDs/Contents/Resources/Xerox WC 7545.gz"
fi

```

```
exit 0
```

Talking about integrating the Mac Computers to Enterprise environments.

2.1 Active Directory

Binding or not to Active Directory is *the* debate today. A couple of years ago, the general recommendation was to bind computers to Active Directory. With the change from desktop and shared computers to 1-to-1 laptop deployments, the picture has dramatically changed.

After the Kerbminder and ADPassMon scripts, we now have two alternatives:

- Apple Enterprise Connect
- Orchard & Grove - NoMAD

2.1.1 Arguments for binding or not binding to Active Directory

Topic	Binding	Not Binding
802.1x	Wi-Fi (WPA2 Enterprise EAP-TLS) can use the machine certificate generated by AD	We can also use a profile that will deploy the root certificates and request a machine certificate through SCEP NoMAD can request a 802.1x certificate
Kerberos tickets	AD automatically provides Kerberos tickets, but only at login and when unlocking from screensaver. On mobile computers, users don't logout as often and are mostly on Wi-Fi which doesn't have time to connect before unlocking the screensaver. As a result, kerberos tickets are rarely renewed.	Enterprise Connect or NoMAD handles the renewal of Kerberos tickets
AD users can log in to any bound Mac & Shared use of Mac (eg. Lab computers)	As user identification and authentication resides on server, users can log in on any bound Mac. This is especially interesting for shared environments such as Labs	On mobile devices, this is getting harder as Portable Home Directories (syncing user home from file share) is no longer supported. The only possibility is to use network directories which are impractical in a mobile environment
User identification and computer usage traceability	Binding to AD ensures that each username and uid is used only once across the bound Mac computers	MDM can better trace computer usage
Users can be admins via the directory plugin	A group of users can be specified as a local admins	A MDM can create a "management account" and take care of renewing the password
Password policies	Password policies are handled in the AD account	A Password policy can be deployed
User Password expiry	Password expiry is handled in the AD account	A Password policy can be deployed
Ease of setup	Computer needs to have access to AD during setup	No particular setup is needed For authenticated DEP, computer needs access to the MDM
Account lock	Local account is locked at next login or unlock from screensaver	A better way to lock the user is to issue the wipe or lock MDM command
Keychain	The keychain password is not synchronized with Active Directory. When the password change is not done on the Mac, the users will get prompted to enter his old and new password	Local and remote passwords are not synced Enterprise Connect or NoMAD will sync the local password when it detects a change. Change will be replicated to the Keychain
FileVault Password	FileVault and remote passwords are not synced When the AD password is reset, Filevault will keep the previous password, meaning we need to also reset FileVault using the recovery key	Filevault and remote passwords are not synced Enterprise Connect or NoMAD will sync the local password when it detects a change. Change will be replicated to FileVault

2.1.2 Choosing between NoMAD and Apple Enterprise Connect

Versions used:

- Enterprise Connect 1.8.0
- NoMAD 1.0.5
- macOS 10.12

x	Enterprise Connect	NoMAD	(Active Directory binding)
Vendor	Apple	Orchard & Grove Inc.	Apple
Open Source	x		x
Support	Supported by Apple PS as included in the engagement and/or AppleCare OS Support	Support plans available	Supported by AppleCare OS Support
OS requirement	10.10+	10.10+	10.3+
Single Sign-On	Automatically	Automatically	Only at login and screensaver
Password Expiration	via Notification Center	via Notification Center	Only at Login
Password change	via menu item	via menu item	via System Preferences or login window
Fine Grained Password Policy support	~ (doesn't honor password expiration time)		x
Quick links to getting support and software	x		x
Support for changing passwords not using AD, e.g. a web-based password portal			x
Password Synchronization	Only when user is logged in	Only when user is logged in	Automatic
Home Network Share Automount			x
Network Share Automount			x
Change Keychain Items on AD password change	x		x
AD Binding required?	x	x	
macOS native?	Uses Apple Frameworks	Uses Apple Frameworks	macOS Native
Script on password change			x
Script on connection completed			x
Audit script		x	x
Distribution	single .pkg	single .pkg	macOS Native
Configuration	via a Configuration Profile (and .plist)	via a Configuration Profile (and .plist)	multiple ways
X509 Identity from CA	Script provided to request it via an AD Certificate profile payload		Mature
Language Support	All macOS languages	English, French, German, Spanish and others.	All macOS languages
Maturity	Mature	1.1.0	x
Installation	Two-day on-site professional services engagement	None	None
Price	\$5,500 (one-time fee)	Free, Support plans available (\$399 to \$2,500 per year)	Free
Availability	Contact your local Apple Sales Rep	http://nomad.menu	macOS Native

CHAPTER 3

Jamf Pro

<http://docs.jamf.com/9.98/casper-suite/jss-install-guide-linux/>

3.1 Introduction

3.1.1 Prerequisites

3.2 Configure AWS

3.2.1 Configure Security

Create VPC

Step 2: VPC with a Single Public Subnet

IPv4 CIDR block:* (65531 IP addresses available)

IPv6 CIDR block: ☒ No IPv6 CIDR Block
☐ Amazon provided IPv6 CIDR block

VPC name:

Public subnet's IPv4 CIDR:* (251 IP addresses available)

Availability Zone:*

Subnet name:

You can add more subnets after AWS creates the VPC.

Service endpoints

Enable DNS hostnames:* ☒ Yes ☐ No

Hardware tenancy:*

Enable ClassicLink:* ☐ Yes ☒ No

- Create VPC

Create Subnets

Create Subnet

Use the CIDR format to specify your subnet's IP address block (e.g., 10.0.0.0/24). Note that block sizes must be a power of 2. Also, note that a subnet can be the same size as your VPC. An IPv6 CIDR block must be a /64 or larger.

Name tag ⓘ

VPC ⓘ

VPC CIDRs

CIDR	Status	Status Reason
10.0.0.0/16	associated	

Availability Zone ⓘ

IPv4 CIDR block ⓘ

- Create subnet on second Availability Zone

Create Security Groups

- jss-lab-jss: will reference my JSS instances
- jss-lab-jss-ports: Public ports (SSH and HTTPS/8443)
- jss-lab-db: MySQL from jss-lab

Create RDS Instance

1. Choose MySQL (then Dev/Test MySQL)


Free Tier

The Amazon RDS Free Tier provides a single db.t2.micro instance as well as up to 20 GB of storage, allowing new AWS customers to gain hands-on experience with Amazon RDS. Learn more about the RDS Free Tier and the instance restrictions [here](#).

☒ Only show options that are eligible for RDS Free Tier

Instance Specifications

DB Engine	mysql
License Model	<input type="text" value="general-public-license"/>
DB Engine Version	<input type="text" value="MySQL 5.7.10"/>

 Review the **Known Issues/Limitations** to learn about potential compatibility issues with specific database versions.

DB Instance Class	<input type="text" value="db.t2.micro — 1 vCPU, 1 GiB RAM"/>
Multi-AZ Deployment	<input type="text" value="No"/>
Storage Type	<input type="text" value="General Purpose (SSD)"/>
Allocated Storage*	<input type="text" value="20"/> GB

Settings

DB Instance Identifier*	<input type="text" value="jamf-lab-db"/>
Master Username*	<input type="text" value="jamfdbroot"/>
Master Password*	<input type="password" value="....."/>
Confirm Password*	<input type="password" value="....."/>

Configure Advanced Settings

Network & Security



VPC*	jamf-lab (vpc-40071524)
Subnet Group	Create new DB Subnet Group
Publicly Accessible	No
Availability Zone	No Preference
VPC Security Group(s)	<div> Create new Security Group default (VPC) jamf-lab-db (VPC) </div>

Database Options

Database Name

Note: if no database name is specified then no initial MySQL database will be created on the DB Instance.

Database Port	3306
DB Parameter Group	default.mysql5.7
Option Group	default:mysql-5-7
Copy Tags To Snapshots	<input type="checkbox"/>
Enable Encryption	No

3. Advanced Settings

3.2.2 Create EC2 Instance

1. RedHat 7

Number of instances ⓘ

1

Launch into Auto Scaling group

Purchasing option ⓘ

☐ Request Spot instances

Network ⓘ

vpc-40071524 | jamf-lab

Subnet ⓘ

subnet-49b6ad3f | jamf-lab eu-west-1a | eu-west-1a

250 IP Addresses available

Auto-assign Public IP ⓘ

Enable

IAM role ⓘ

None

Shutdown behavior ⓘ

Stop

Enable termination protection ⓘ

☐ Protect against accidental termination

Monitoring ⓘ

☐ Enable CloudWatch detailed monitoring

Additional charges apply.

Tenancy ⓘ

Shared - Run a shared hardware instance

Additional charges will apply for dedicated tenancy.

2. t2.micro (not recommended in production)

3. Select storage

Volume Type ⓘ	Device ⓘ	Snapshot ⓘ	Size (GiB) ⓘ	Volume Type ⓘ	IOPS ⓘ	Throughput (MB/s) ⓘ	Delete on Termination ⓘ	Encrypted ⓘ
Root	/dev/sda1	snap-e3be479a	30	General Purpose SSD (GP2)	100 / 3000	N/A	<input checked="" type="checkbox"/>	Not Encrypted

Step 6: Configure Security Group

A security group is a set of firewall rules that control the traffic for your instance. On this page, you can add rules to allow specific traffic to reach your instance. For example, if you want to allow Internet traffic to reach your instance, add rules that allow unrestricted access to the HTTP and HTTPS ports. You can create a new security group or select from an existing one to assign to your instance.

Assign a security group: ☐ Create a new security group ☒ Select an existing security group

Security Group ID	Name	Description
<input type="checkbox"/> sg-6d7fb014	default	default VPC security group
<input type="checkbox"/> sg-5279b62b	jamf-lab-db	MySQL Access for JAMF Lab
<input checked="" type="checkbox"/> sg-1570bf6c	jss-lab-jss	JSS Instances
<input type="checkbox"/> sg-c48f41bd	jss-lab-jss-ports	Public ports for JSS

4. Configure Security Group (SSH+HTTPS)

3.3 Install the JSS

3.3.1 On EC2 Instance

Login to the EC2 Instance by using your newly created SSH key:

```
ssh -i Jamf-EC2.pem ec2-user@ec2-34-251-175-48.eu-west-1.compute.amazonaws.com
```

Let's update the instance!

```
sudo yum update
```

You may need to reboot (a good idea if kernel or firmware was upgraded!)

```
sudo reboot
```

Wait a few minutes until the instance is back online.

Upload the JSS Installer to the instance

```
scp -i Jamf-EC2.pem ~/Downloads/JSSInstallerLinux9.98.zip
ec2-user@ec2-34-251-175-48.eu-west-1.compute.amazonaws.com:
```

Login to the EC2 Instance:

```
ssh -i Jamf-EC2.pem ec2-34-251-175-48.eu-west-1.compute.amazonaws.com
```

Install Java 1.8

```
sudo yum install java-1.8.0-openjdk-devel
```

Install unzip

```
sudo yum install unzip
```

Unzip the JSS Installer

```
unzip JSSInstallerLinux9.98.zip
```

Launch the Installation Script

```
sudo JSSInstallerLinux/JSS\ Installation/jssinstaller.run
```

```
[ec2-user@ip-172-30-2-85 ~]$ sudo JSSInstallerLinux/JSS\ Installation/jssinstaller.run
Verifying archive integrity... All good.
Uncompressing JSS Installer 100%
Starting the Linux JSS Installation
Checking installation requirements...
Checking for a 64-bit OS...OK
Checking for Java 1.7+ ...Java minor version found: 8
Verifying JCE Unlimited Strength Jurisdiction Policy files...Found required JCE
↳support on this server.
Java JCE files verified
Checking if Tomcat is NOT installed...OK
Passed all requirements

To be installed into /usr/local/jss:
* Tomcat 8.0.41
* JSS
* JSS Database Utility
*
* NOTE: When upgrading to Tomcat 8 for the first time, the account and group named
↳'tomcat7' will be renamed to 'jamftomcat'

Proceed? (y/n): y
Installing...
Starting Tomcat Installation
Adding Tomcat user and group...

Installing init.d script...
Copying Tomcat files...
Setting permissions...
Tomcat Installation Done!
Starting JSS Installation
Generating Tomcat keystore...OK
Copying JSS Webapp...
jar command found
Creating the ROOT webapp directory for extraction point
Extracting ROOT.war using jar command
ROOT.war extracted successfully
Done extracting war...
```

```
Finalizing Tomcat and Web App settings...
JSS Webapp Installation Done!
Starting Database Backup Utility Installation
Copying JSS Database Backup Utility...Error: The JSS Database Utility must be
↳launched on a system with MySQL installed. If MySQL is already installed, you must
↳specify the location of MySQL using the -mysqlPath flag.
JSS Database Utility 9.98
OK
JSS Database Backup Utility and backup script are located in /usr/local/jss/bin

The JSS has been installed.
Verify that port 8443 is not blocked by a firewall.

Note: MySQL is required for the JSS to run. If you do not have MySQL installed,
↳download and install the latest version.
MySQL Enterprise Edition is recommended and may be found at http://www.mysql.com/
↳downloads/mysql
Alternatively, MySQL Community Edition may be installed:
Ubuntu/Debian users can run "apt-get install mysql-server"
RedHat users can run "yum install mysql-server"
Or any Linux distribution can download and install the appropriate package at http://
↳www.mysql.com/downloads/mysql

To complete the installation, open a web browser and navigate to https://ip-172-30-2-85.eu-west-1.compute.internal:8443.
If you are installing the JSS for the first time, you are prompted with the JSS Setup
↳Assistant. Complete the JSS Setup Assistant to start using your JSS.
[ec2-user@ip-172-30-2-85 ~]$
```

Done!

3.3.2 Configure RDS

When first connecting to your instance, you should get a "Database Connection Error"

Connect to your EC2 Instance.

First, install MySQL:

```
sudo yum install mysql
```

Create the jamfsoftware database

```
mysql -h jamf-lab-db.c6kljkzmalb2.eu-west-1.rds.amazonaws.com -u jamfdbroot -p
-e "CREATE DATABASE jamfsoftware"
```

Create a new user jamfsoftware who will only connect from 10.0.0.248 and have access to all tables from jamfsoftware database, with password changeme

```
mysql -h jamf-lab-db.c6kljkzmalb2.eu-west-1.rds.amazonaws.com -u jamfdbroot
-p -e "GRANT ALL ON jamfsoftware.* TO jamfsoftware@10.0.0.248 IDENTIFIED BY
'changeme';"
```

You can now go to <https://ec2-34-251-175-48.eu-west-1.compute.amazonaws.com:8443/>

Configure the DB with the database and credentials you entered above

Database Hostname
kljkzma1b2.eu-west-1.rds.amazonaws.com : 3306

Database
jamfsoftware

Database Username
jamfsoftware

Database Password
.....

☒ Save Password In Configuration File

Max Connection Pool Size
90

Cancel Save

And... Done!! You should now see the license!

3.4 Redirecting from 8443 to 443

Install FirewallD

```
sudo yum install firewallld
```

Start the service

```
sudo systemctl start firewallld
```

Add the redirection

```
sudo firewall-cmd --permanent --add-masquerade sudo firewall-cmd --permanent
--add-forward-port=port=443:proto=tcp:toport=8443
```

Allow port 8443/TCP

```
sudo firewall-cmd --permanent --add-port=8443/tcp
```

Allow port 443/TCP

```
sudo firewall-cmd --permanent --add-port=443/tcp
```

Reload the service `sudo firewall-cmd --reload`

Enable FirewallD at boot

```
sudo systemctl enable firewallld
```

Why not reboot to test that everything is working fine!

```
sudo reboot
```

And that's done!

3.5 Conclusion

3.6 Jamf Resources

3.6.1 Community

- [Jamf Nation](#)
- Join the [#jamfnation](#) channel on [MacAdmin Slack](#)

3.6.2 Jamf Resources

- [Start here if you're a Windows Admin](#)
- [Case Studies](#)
- [White papers](#)
- [Webinars](#)
- [Videos](#)
- [Technical Papers](#)

3.6.3 Jamf Product Documentation

- [Product Documentation](#)
- [Release Notes](#)
- [Installation Guides](#)
- [Quickstart Guides](#)

3.6.4 Jamf Training

See all training information [here](#).

CCT is a great introductory-level training. Anyone remotely involved in managing, supporting and selling Mac and iOS devices at your organization should take it. It's a 4-day course. Anyone can join, don't be shy!

CCA is for your MacAdmins. They should all have it. Don't go cheap on this one. They need to have 6 month of experience.

CCE is for your experienced MacAdmins who need additional challenges. It's scenario-based. They will love it. But it's purely optional.

CJA is for your JSS Administrators, it doesn't cover Mac Administration at all.

I suggest you buy a [Training pass](#):

- **Individual:** one of your staff can go to any number of Jamf training for one year
- **Organizational:** any of your staff can go to any number of Jamf trainings for one year, provided they don't attend to the same one at the same time.

3.7 Open Source and Jamf

This list contains some open source projects that are related to managing JAMF Pro (formerly Casper Suite). They may help you to do some things that are not possible with the Web UI alone.

3.7.1 Repositories

These are some notable repositories that are dedicated to supporting JAMF Pro or have a significant number of projects related to JAMF.

- [JAMF IT](#)
- [JAMF Pro Services](#)
- [JAMF Support](#)
- [JAMF Open Source Community](#)

3.7.2 API

- [python-jss](#) Python wrapper for the Jamf JSS Rest API
- [ruby-jss](#) Access to the Casper Suite from Ruby

3.7.3 Command Line Tools

- [jss_helper](#) `jss_helper` is a powerful commandline interface for managing and auditing your Casper JSS.

3.7.4 Configuration Management Modules

- [jss_chef](#) This cookbook installs and configures Jamf Pro.
- [puppet-jss](#) Puppet manifests for deploying and configuring JAMF Software JSS, MySQL, and Distribution Points.

3.7.5 Extension Attributes

- [jhbush 2014](#)
- [franton](#)
- [74bit](#)
- [acodega](#)
- [mondada](#)
- [smashism](#)
- [apizz](#)
- [stevewood-tx](#)

3.7.6 Migration

- (Do not use in prod!) [promoter](#)
- [jssMigrationUtility](#)

3.7.7 Onboarding

- [ProgressScreen](#) by Jason Tratta
- [CasperSplash](#) Onboarding splash screen for Casper Suite DEP

3.7.8 Packaging

- [JSSImporter](#) Upload packages made with AutoPkg to your JSS with customizable policies.
- [Spruce](#) Identify unused packages and scripts on a JAMF Casper JSS and optionally remove them.
- [Depot3](#) Command line package and patch management for Casper
- [jamJAR](#) jamJAR: Jamf, AutoPKG & Munki combined by dataJAR.
- [patchoo](#) Patchoo somewhat emulates munki workflows and user experience for JAMF Software's Casper Suite.

3.7.9 Scripts (Misc)

3.7.10 Troubleshooting

- [Deadpool](#) JAMF check-ins with healing factor and a mouth

3.8 JSS Tuning

Warning: Do not attempt to make any of these changes without a Backup of your JSS Database.
--

3.8.1 Java & Tomcat

- See [Rich Trouton's Post](#)

3.8.2 Database

optimizer_search_depth

For some reason this is recommended to be set to **3**. I believe this is to stop MariaDB/MySQL from coming up with too many execution plans.

key_buffer_size

As per this [article](#), key buffer size should be set to about 25% or more of the available server RAM.

query_cache_size

See [article](#), Set to 0.

query_cache_type

Set to 0 to disable the query cache.

(ignore) Table Storage: InnoDB

Changing the table storage might have far reaching implications for you so I don't recommend this now, but these settings were recommended:

```
innodb_log_file_size=512M
innodb_flush_log_at_trx_commit=1
innodb_file_per_table=1
innodb_buffer_pool_size=amount_of_RAMG # 60% or more of your total ram
innodb_buffer_pool_instances=8
```

3.9 Configuring Cloud Distribution Points

3.9.1 Concept

A Cloud Distribution Point (CDP) is a glorified FTP service. Currently, the JSS supports:

- Amazon Web Services (S3 + CloudFront)
- Rackspace Cloud Files
- Akamai

I will currently focus on Amazon S3. Feel free to fork and add more info.

Amazon S3 + CloudFront

As told earlier, Amazon S3 is a glorified FTP service. It's available from Amazon Web Services, and permit to store your files online. On top of that, we use CloudFront, that replicates your Amazon S3 data to all Amazon datacenters worldwide. Quite neat! But all great things come with a cost. Be careful with what you store. Perhaps it's time to leverage your applications autoupdate mechanisms!

Note: CloudFront automatically replicates your files accross all Amazon datacenters. That means there will be a few minutes delay until your files are available everywhere.

3.9.2 Common setups

A single Cloud Distribution Point

- Few users or few packages
- small, spread-out websites

CDP acting as ‘backup’ DP

- Provide data wherever the user is (= outside of the network)
- Provide data to small sites that don’t need/want a local server

CDP for some files

Setup a CDP and select which files you want to provide from it.

- Provide a fail-safe Distribution Point for small packages

3.9.3 Setting up

Amazon S3

You need to create a IAM (Identity Access Management) group, user, and assign a profile to limit its access rights.

1. Navigate to IAM
2. Create a group *jamf-group*
3. Create a user *jamf-user*
4. Assign the user *jamf-user* to the group *jamf-group*
5. Create and assign policy *jamf-policy* (see below) to the group *jamf-group*

With AWS CLI:

```
# Create group
aws iam create-group --group-name jamf-group --output table

# Create user
aws iam create-user --user-name jamf-user --output table

# Create an access key for this user (will dump AccessKeyId and SecretAccessKey)
aws iam create-access-key --user-name jamf-user

# Add user to group
aws iam add-user-to-group --user-name jamf-user --group-name jamf-group

# Assign policy to group
aws iam put-group-policy --group-name jamf-group --policy-document file:///./jamf-
↪group-policy.json --policy-name jamf-policy

# Check if it's working well:
aws iam get-group --group-name jamf-group --output table
aws iam get-group-policy --group-name jamf-group --policy-name jamf-policy --output_
↪table
```

Your jamf-policy file:

```
{
  "Version": "2016-01-05",
  "Statement": [
    {
```

```

    "Effect": "Allow",
    "Action": [
        "s3:*"
    ],
    "Resource": [
        "*"
    ]
},
{
    "Effect": "Allow",
    "Action": [
        "cloudfront:CreateCloudFrontOriginAccessIdentity",
        "cloudfront:CreateDistribution",
        "cloudfront:CreateInvalidation",
        "cloudfront:CreateStreamingDistribution",
        "cloudfront:GetCloudFrontOriginAccessIdentity",
        "cloudfront:GetCloudFrontOriginAccessIdentityConfig",
        "cloudfront:GetDistribution",
        "cloudfront:GetDistributionConfig",
        "cloudfront:GetInvalidation",
        "cloudfront:GetStreamingDistribution",
        "cloudfront:GetStreamingDistributionConfig",
        "cloudfront:ListCloudFrontOriginAccessIdentities",
        "cloudfront:ListDistributions",
        "cloudfront:ListInvalidations",
        "cloudfront:ListStreamingDistributions",
        "cloudfront:UpdateCloudFrontOriginAccessIdentity",
        "cloudfront:UpdateDistribution",
        "cloudfront:UpdateStreamingDistribution"
    ],
    "Resource": [
        "*"
    ]
}
]
}

```

Note: **TODO:** need to try to use “jamf*” as the ressource.

JSS

```

$ java -version
java version "1.7.0_91"
OpenJDK Runtime Environment (rhel-2.6.2.3.el7-x86_64 u91-b00)
OpenJDK 64-Bit Server VM (build 24.91-b01, mixed mode)

```

Tip: Centos users: if you installed 1.8 by mistake, try `sudo yum swap java-1.8.0-openjdk.x86_64 java-1.7.0-openjdk.x86_64` then `sudo systemctl restart jamf.tomcat7.service` to restart the JSS.

1. Navigate to Settings > Computer Management > Cloud Distribution Point

2. Enter all the relevant info you provided earlier.

Cloud Distribution Point

Content Delivery Network
Content delivery network to use for the distribution point

Amazon Web Services

☒ **Use as master distribution point**
Use as the authoritative source for all files

Amazon Web Services Account
Account to use to access Amazon Web Services

Access Key ID
DSFSADF986ASDFASDF

Secret Access Key
.....

Verify Secret Access Key
.....

Download URL
URL to download files from
https://.cloudfront.net

☐ **Require Signed URLs**
Restrict access to requests that use a signed URL

Cancel Save

AutoPkg

The JSS is acting as a dispatcher. You simply need to provide the necessary [information](#).

Example:

```
# Check the current settings:
defaults read ~/Library/Preferences/com.github.autopkg.plist

# Setup the array (optional if you have something already)
/usr/libexec/PlistBuddy -c "Add :JSS_REPOS array" ~/Library/Preferences/com.github.
↳ autopkg.plist

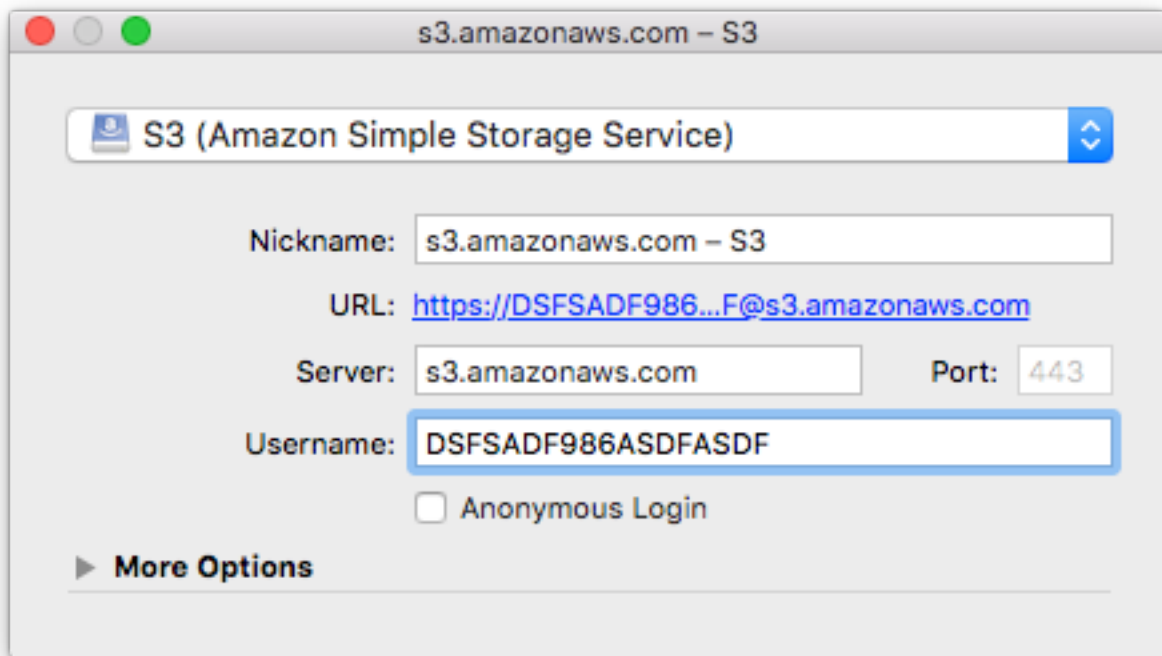
# Setup a new dict (make sure to change index number if you have some already)
/usr/libexec/PlistBuddy -c "Add :JSS_REPOS:0 dict" ~/Library/Preferences/com.github.
↳ autopkg.plist
/usr/libexec/PlistBuddy -c "Add :JSS_REPOS:0:type string CDP" ~/Library/Preferences/
↳ com.github.autopkg.plist
```

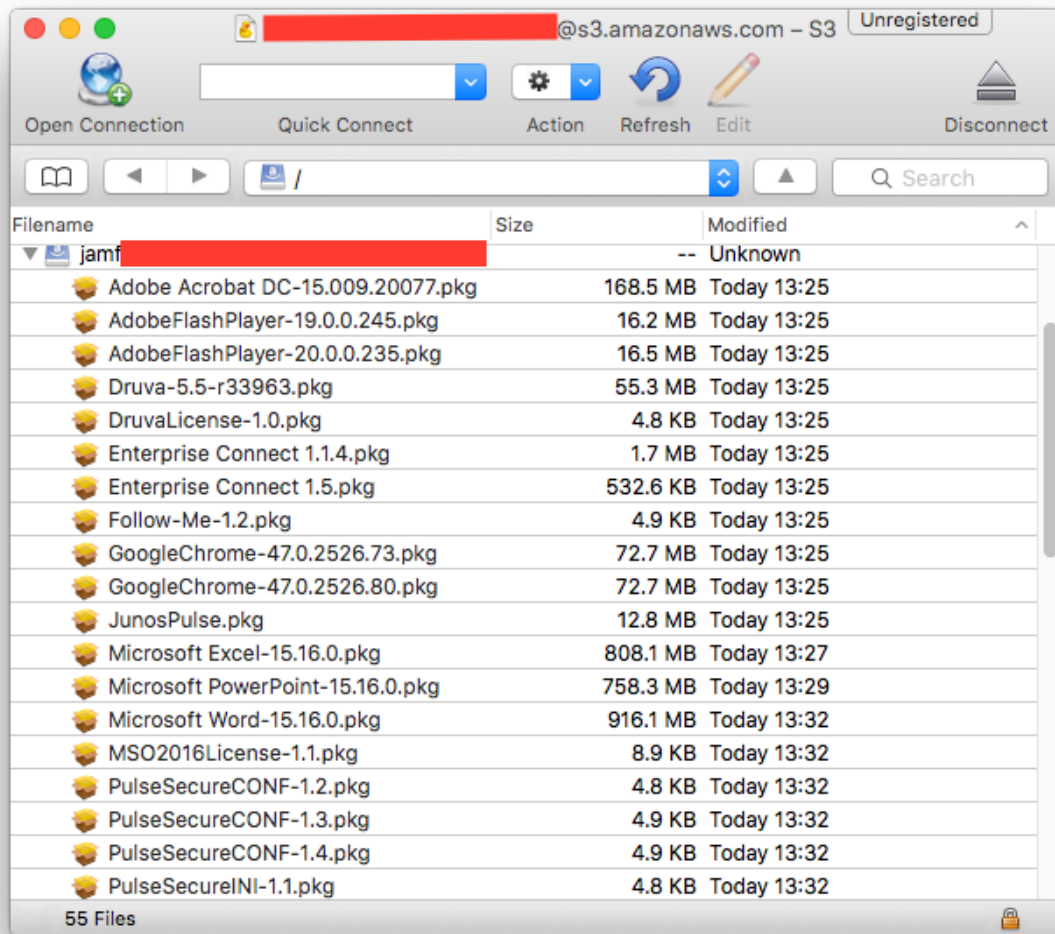
3.9.4 Testing

Listing the files on Amazon S3 with Cyberduck

I found out the easiest way to see what's actually store on Amazon S3 is to use Cyberduck. Simply add a profile with "S3 (Amazon Simple Storage Service).

Note: your file may take several minutes to show up here.





3.10 AutoPkg: Word Example

3.10.1 Make an Override

```
$ autopkg make-override com.github.jss-recipes.jss.MicrosoftWord
Override file saved to /Users/admin/Library/AutoPkg/RecipeOverrides/Microsoft Word.
→ jss.recipe
$ mv ~/Library/AutoPkg/RecipeOverrides/Microsoft\ Word.jss.recipe ~/Library/AutoPkg/
→ RecipeRepos/com.github.ftiff.mac-autopkg/MicrosoftOffice2016/
$ cd ~/Library/AutoPkg/RecipeRepos/com.github.ftiff.mac-autopkg/MicrosoftOffice2016/
```

3.10.2 Recipe

Delete all the keys you will not override.

1. Change the Identifier
2. Category (for Package)
3. Policy_Category (for Policy)

```
<?xml version="1.0" encoding="UTF-8"?>
<!DOCTYPE plist PUBLIC "-//Apple//DTD PLIST 1.0//EN" "http://www.apple.com/DTDs/
PropertyList-1.0.dtd">
<plist version="1.0">
<dict>
  <key>Identifier</key>
  <string>com.github.ftiff.mac-autopkg.jss.Microsoft Word</string>
  <key>Input</key>
  <dict>
    <key>CATEGORY</key>
    <string>Productivity</string>
    <key>GROUP_NAME</key>
    <string>%NAME%-update-smart</string>
    <key>GROUP_TEMPLATE</key>
    <string>SmartGroupTemplateCasper.xml</string>
    <key>POLICY_CATEGORY</key>
    <string>Productivity</string>
    <key>POLICY_TEMPLATE</key>
    <string>PolicyTemplate.xml</string>
  </dict>
  <key>ParentRecipe</key>
  <string>com.github.jss-recipes.jss.MicrosoftWord</string>
</dict>
</plist>
```

3.10.3 Smart Group Template

```
<computer_group>
  <name>%group_name%</name>
  <is_smart>true</is_smart>
  <criteria>
    <criterion>
      <name>Packages Installed By Casper</name>
      <priority>0</priority>
      <and_or>and</and_or>
      <search_type>does not have</search_type>
      <value>%NAME%-%VERSION%.pkg</value>
    </criterion>
  </criteria>
</computer_group>
```

Policy Template

```
<policy>
  <general>
    <name>%PROD_NAME%</name>
    <enabled>true</enabled>
    <frequency>Ongoing</frequency>
    <category>
      <name>%POLICY_CATEGORY%</name>
    </category>
  </general>
</policy>
```

```
</general>
  <scope>
    <!--Scope added by JSSImporter-->
  </scope>
  <package_configuration>
    <!--Package added by JSSImporter-->
  </package_configuration>
  <scripts>
    <!--Scripts added by JSSImporter-->
  </scripts>
  <self_service>
    <use_for_self_service>true</use_for_self_service>
    <feature_on_main_page>true</feature_on_main_page>
    <install_button_text>Install %VERSION%</install_button_text>
    <self_service_description>%SELF_SERVICE_DESCRIPTION%</self_service_
↪description>
  </self_service>
  <maintenance>
    <recon>true</recon>
  </maintenance>
</policy>
```

3.10.4 Build the Recipe

```
$ autopkg run Microsoft\ Word.jss.recipe
```

3.10.5 Results





Package

Microsoft Word–15.16.0.pkg

General	Options	Limitations
<p>Display Name Display name for the package <input type="text" value="Microsoft Word-15.16.0.pkg"/></p> <p>Category Category to add the package to <input type="text" value="Productivity"/></p> <p>Filename Filename of the package on the distribution point (e.g. "MyPackage.dmg") <input type="text" value="Microsoft Word-15.16.0.pkg"/></p> <p>Info Information to display to the administrator when the package is deployed or uninstalled <input type="text"/></p> <p>Notes Notes to display about the package (e.g. who built it and when it was built) <input type="text"/></p>		
<div>DoneHistoryDeleteEdit</div>		

Policy

Microsoft Word

Options	Scope	Self Service	User Interaction	Show in JSS Dashboard <input type="checkbox"/>
<div> <div>  General </div> <div>  Packages 1 Package </div> <div>  Restart Options Configured </div> <div>  Maintenance Configured </div> </div> <div> <h2>General</h2> <p>Display Name Display name for the policy</p> <input type="text" value="Microsoft Word"/> <p><input checked="" type="checkbox"/> Enabled</p> <p>Category Category to add the policy to</p> <input type="text" value="Productivity"/> <p>Trigger Event(s) to use to initiate the policy</p> <p><input type="checkbox"/> Startup When a computer starts up. A startup script that checks for policies must be configured in the JSS for this to work</p> <p><input type="checkbox"/> Login When a user logs in to a computer. A login hook that checks for policies must be configured in the JSS for this to work</p> <p><input type="checkbox"/> Logout When a user logs out of a computer. A logout hook that checks for policies must be configured in the JSS for this to work</p> <p><input type="checkbox"/> Network State Change When a computer's network state changes (e.g. when the network connection changes, when the computer name changes, when the IP address changes)</p> <p><input type="checkbox"/> Enrollment Complete Immediately after a computer completes the enrollment process</p> <p><input type="checkbox"/> Recurring Check-in At the recurring check-in frequency configured in the JSS</p> <p><input type="checkbox"/> Custom At a custom event</p> <p>Execution Frequency Frequency at which to run the policy</p> <input type="text" value="Ongoing"/> <p><input type="checkbox"/> Make Available Offline Cache the policy to ensure it runs when the JSS is unavailable</p> <p>Target Drive The drive on which to run the policy (e.g. "/Volumes/Restore/"). The policy</p> </div>				

History

Logs

Clone

Delete

Edit

Options **Scope** **Self Service** **User Interaction** Show in JSS Dashboard ☐

Targets Limitations Exclusions

Target Computers
Computers to deploy the policy to
Specific Computers

Target Users
Users to deploy the policy to
Specific Users

Target	Type
Microsoft Word-update-smart	Smart Computer Group


History

Logs

Clone

Delete

Edit

Options	Scope	Self Service	User Interaction	Show in JSS Dashboard <input type="checkbox"/>																						
<input checked="" type="checkbox"/> Make the policy available in Self Service																										
Button Name Name for the button that users click to initiate the policy <input type="text" value="Install 15.16"/>																										
Description Description to display for the policy in Self Service <input type="text" value="Microsoft Word is a graphical word processing program that users can type with. It is made by the computer company Microsoft. The purpose of the MS Word is to allow the users to type and save documents."/>																										
<input type="checkbox"/> Ensure that users view the description Force users to view the description before the policy runs																										
 Icon Icon to display for the policy. It is recommended that you use a file with the GIF or PNG format. The recommended size is 128x128 pixels <input type="text" value="Microsoft Word.png"/>																										
<input checked="" type="checkbox"/> Feature the policy on the main page																										
Categories Categories in which to display or feature the policy in Self Service																										
<table border="1"> <thead> <tr> <th>Display in</th> <th>Feature in</th> </tr> </thead> <tbody> <tr> <td><input type="checkbox"/> Backup</td> <td><input type="checkbox"/> Backup</td> </tr> <tr> <td><input type="checkbox"/> Critical</td> <td><input type="checkbox"/> Critical</td> </tr> <tr> <td><input type="checkbox"/> Digital Media</td> <td><input type="checkbox"/> Digital Media</td> </tr> <tr> <td><input type="checkbox"/> Google</td> <td><input type="checkbox"/> Google</td> </tr> <tr> <td><input type="checkbox"/> Optional</td> <td><input type="checkbox"/> Optional</td> </tr> <tr> <td><input type="checkbox"/> Printers</td> <td><input type="checkbox"/> Printers</td> </tr> <tr> <td><input checked="" type="checkbox"/> Productivity</td> <td><input type="checkbox"/> Productivity</td> </tr> <tr> <td><input type="checkbox"/> Self-Service</td> <td><input type="checkbox"/> Self-Service</td> </tr> <tr> <td><input type="checkbox"/> Site-Specific Configuration</td> <td><input type="checkbox"/> Site-Specific Configuration</td> </tr> <tr> <td><input type="checkbox"/> Testing</td> <td><input type="checkbox"/> Testing</td> </tr> </tbody> </table>					Display in	Feature in	<input type="checkbox"/> Backup	<input type="checkbox"/> Backup	<input type="checkbox"/> Critical	<input type="checkbox"/> Critical	<input type="checkbox"/> Digital Media	<input type="checkbox"/> Digital Media	<input type="checkbox"/> Google	<input type="checkbox"/> Google	<input type="checkbox"/> Optional	<input type="checkbox"/> Optional	<input type="checkbox"/> Printers	<input type="checkbox"/> Printers	<input checked="" type="checkbox"/> Productivity	<input type="checkbox"/> Productivity	<input type="checkbox"/> Self-Service	<input type="checkbox"/> Self-Service	<input type="checkbox"/> Site-Specific Configuration	<input type="checkbox"/> Site-Specific Configuration	<input type="checkbox"/> Testing	<input type="checkbox"/> Testing
Display in	Feature in																									
<input type="checkbox"/> Backup	<input type="checkbox"/> Backup																									
<input type="checkbox"/> Critical	<input type="checkbox"/> Critical																									
<input type="checkbox"/> Digital Media	<input type="checkbox"/> Digital Media																									
<input type="checkbox"/> Google	<input type="checkbox"/> Google																									
<input type="checkbox"/> Optional	<input type="checkbox"/> Optional																									
<input type="checkbox"/> Printers	<input type="checkbox"/> Printers																									
<input checked="" type="checkbox"/> Productivity	<input type="checkbox"/> Productivity																									
<input type="checkbox"/> Self-Service	<input type="checkbox"/> Self-Service																									
<input type="checkbox"/> Site-Specific Configuration	<input type="checkbox"/> Site-Specific Configuration																									
<input type="checkbox"/> Testing	<input type="checkbox"/> Testing																									

3.10. AutoPkg: Word Example

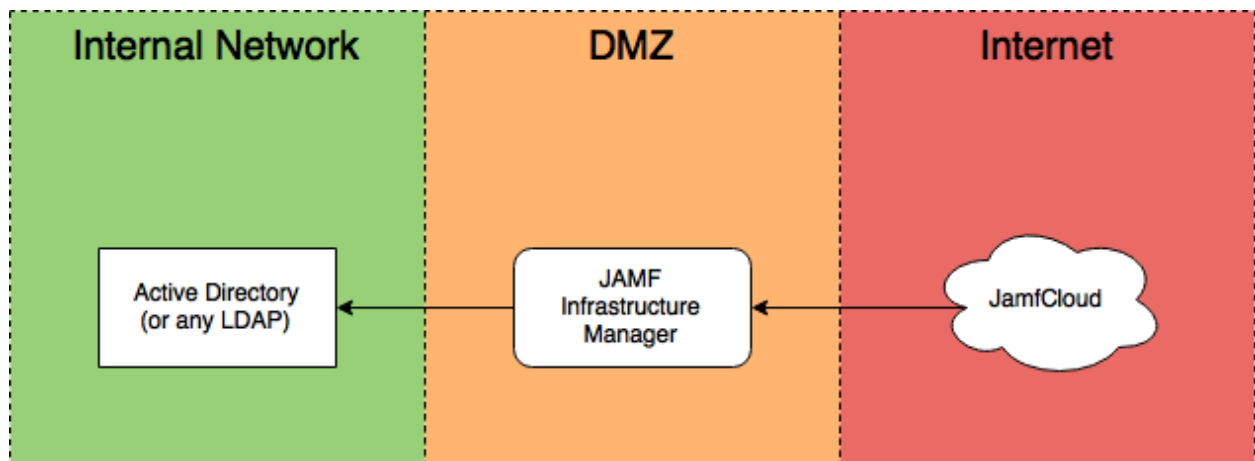
History
Logs
Clone
Delete
Edit

Smart Group

Options	Scope	Self Service	User Interaction	Show in JSS Dashboard <input type="checkbox"/>				
<div> <div>Targets</div> <div>Limitations</div> <div>Exclusions</div> </div>								
Target Computers Computers to deploy the policy to <div>Specific Computers ▾</div>								
Target Users Users to deploy the policy to <div>Specific Users ▾</div>								
<table border="1"> <thead> <tr> <th>Target</th> <th>Type</th> </tr> </thead> <tbody> <tr> <td>Microsoft Word-update-smart</td> <td>Smart Computer Group</td> </tr> </tbody> </table>					Target	Type	Microsoft Word-update-smart	Smart Computer Group
Target	Type							
Microsoft Word-update-smart	Smart Computer Group							
<div> <div>History</div> <div>Logs</div> <div>Clone</div> <div>Delete</div> <div>Edit</div> </div>								

3.11 Infrastructure Manager

3.11.1 Architecture



Your JAMF Infrastructure Manager server should sit in the DMZ and should only be able to talk with the correct port of your LDAP server.

It should be reachable from Internet at the port you'll specify in the JSS.

3.11.2 Prerequisites

Please read the [Administrator Manual](#) first.

Ubuntu 14.04 LTS

You'll need to download and setup Ubuntu 14.04 LTS. I won't cover this here.

I use Microsoft Azure for test purposes.

Firewall settings

Internal Network <-> DMZ

Infrastructure Manager Server should be able to reach:

- the LDAP server (389, 636 or 3268)
- your internal DNS server
- your internal NTP server if available

DMZ <-> Internet

Infrastructure manager should be able to reach

- your JSS (port 8443 usually)

Infrastructure manager needs to be reached on the port you'll set later. Choose a port > 1024.

Consult [Permitting Inbound/Outbound Traffic with JAMF Cloud](#) for more information.

Java 1.8

In an ideal world, you should download Java from [Oracle](#). Or better, you shouldn't use Java.

I found the best way to install Oracle Java 1.8 is doing the following:

```
sudo add-apt-repository ppa:webupd8team/java
sudo apt-get update
sudo apt-get install oracle-java8-installer
```

You'll have to access Oracle's License to proceed.

As this is a third-party repository, use it with caution, and only on test instances. If you found a better way, please [contribute](#).

Test with `java -version` to see if it works.

```
$ java -version
java version "1.8.0_101"
Java(TM) SE Runtime Environment (build 1.8.0_101-b13)
Java HotSpot(TM) 64-Bit Server VM (build 25.101-b13, mixed mode)
```

JAMF Infrastructure Manager package

1. Connect to JAMF Nation
2. Go to [My Assets](#)
3. Download Infrastructure Manager
4. Upload it to your Linux server

I use `scp` to upload the binary to my server:

```
cd ~/Downloads
scp jamf-im_1.0.0-0_all.deb fti@13.93.87.150:
```

3.11.3 Configuring








Create the correct user in JSS

Create a Standard User that has only “Infrastructure Manager” role.

jamf-im

Account	Privileges
Username Username for the account <input type="text" value="jamf-im"/>	
Privilege Set Set of privileges to grant the account <input type="button" value="Custom"/>	
Access Status Access status of the account ("enabled" or "disabled") <input type="button" value="Enabled"/>	
Full Name Name of the account holder (e.g. "John Smith") <input type="text" value="JAMF Infrastructure Manager"/>	
Email Address Email address for the account (e.g. "john@mycompany.com") <input type="text"/>	
Password Password for the account <input type="password" value="....."/>	
Verify Password <input type="password" value="....."/>	
<input type="checkbox"/> Force user to change password at next login	
<div>CancelSave</div>	

jamf-im

Account	Privileges																																																																																
 JSS Objects Create, Read, Update, a...	<table border="1"> <tbody> <tr><td>Configurations</td><td><input type="checkbox"/></td><td><input type="checkbox"/></td><td><input type="checkbox"/></td><td><input type="checkbox"/></td></tr> <tr><td>Departments</td><td><input type="checkbox"/></td><td><input type="checkbox"/></td><td><input type="checkbox"/></td><td><input type="checkbox"/></td></tr> <tr><td>Device Enrollment Program</td><td><input type="checkbox"/></td><td><input type="checkbox"/></td><td><input type="checkbox"/></td><td><input type="checkbox"/></td></tr> <tr><td>Device Name Patterns</td><td><input type="checkbox"/></td><td><input type="checkbox"/></td><td><input type="checkbox"/></td><td><input type="checkbox"/></td></tr> <tr><td>Directory Bindings</td><td><input type="checkbox"/></td><td><input type="checkbox"/></td><td><input type="checkbox"/></td><td><input type="checkbox"/></td></tr> <tr><td>Disk Encryption Configurations</td><td><input type="checkbox"/></td><td><input type="checkbox"/></td><td><input type="checkbox"/></td><td><input type="checkbox"/></td></tr> <tr><td>Disk Encryption Institutional Configurations</td><td><input type="checkbox"/></td><td><input type="checkbox"/></td><td><input type="checkbox"/></td><td><input type="checkbox"/></td></tr> <tr><td>Dock Items</td><td><input type="checkbox"/></td><td><input type="checkbox"/></td><td><input type="checkbox"/></td><td><input type="checkbox"/></td></tr> <tr><td>eBooks</td><td><input type="checkbox"/></td><td><input type="checkbox"/></td><td><input type="checkbox"/></td><td><input type="checkbox"/></td></tr> <tr><td>Enrollment Profiles</td><td><input type="checkbox"/></td><td><input type="checkbox"/></td><td><input type="checkbox"/></td><td><input type="checkbox"/></td></tr> <tr><td>File Attachments</td><td><input type="checkbox"/></td><td><input type="checkbox"/></td><td><input type="checkbox"/></td><td><input type="checkbox"/></td></tr> <tr><td>File Share Distribution Points</td><td><input type="checkbox"/></td><td><input type="checkbox"/></td><td><input type="checkbox"/></td><td><input type="checkbox"/></td></tr> <tr><td>iBeacons</td><td><input type="checkbox"/></td><td><input type="checkbox"/></td><td><input type="checkbox"/></td><td><input type="checkbox"/></td></tr> <tr><td>Infrastructure Managers</td><td><input checked="" type="checkbox"/></td><td><input checked="" type="checkbox"/></td><td><input checked="" type="checkbox"/></td><td><input checked="" type="checkbox"/></td></tr> <tr><td>iOS Configuration Profiles</td><td><input type="checkbox"/></td><td><input type="checkbox"/></td><td><input type="checkbox"/></td><td><input type="checkbox"/></td></tr> <tr><td>JDS</td><td><input type="checkbox"/></td><td><input type="checkbox"/></td><td><input type="checkbox"/></td><td><input type="checkbox"/></td></tr> </tbody> </table>	Configurations	<input type="checkbox"/>	<input type="checkbox"/>	<input type="checkbox"/>	<input type="checkbox"/>	Departments	<input type="checkbox"/>	<input type="checkbox"/>	<input type="checkbox"/>	<input type="checkbox"/>	Device Enrollment Program	<input type="checkbox"/>	<input type="checkbox"/>	<input type="checkbox"/>	<input type="checkbox"/>	Device Name Patterns	<input type="checkbox"/>	<input type="checkbox"/>	<input type="checkbox"/>	<input type="checkbox"/>	Directory Bindings	<input type="checkbox"/>	<input type="checkbox"/>	<input type="checkbox"/>	<input type="checkbox"/>	Disk Encryption Configurations	<input type="checkbox"/>	<input type="checkbox"/>	<input type="checkbox"/>	<input type="checkbox"/>	Disk Encryption Institutional Configurations	<input type="checkbox"/>	<input type="checkbox"/>	<input type="checkbox"/>	<input type="checkbox"/>	Dock Items	<input type="checkbox"/>	<input type="checkbox"/>	<input type="checkbox"/>	<input type="checkbox"/>	eBooks	<input type="checkbox"/>	<input type="checkbox"/>	<input type="checkbox"/>	<input type="checkbox"/>	Enrollment Profiles	<input type="checkbox"/>	<input type="checkbox"/>	<input type="checkbox"/>	<input type="checkbox"/>	File Attachments	<input type="checkbox"/>	<input type="checkbox"/>	<input type="checkbox"/>	<input type="checkbox"/>	File Share Distribution Points	<input type="checkbox"/>	<input type="checkbox"/>	<input type="checkbox"/>	<input type="checkbox"/>	iBeacons	<input type="checkbox"/>	<input type="checkbox"/>	<input type="checkbox"/>	<input type="checkbox"/>	Infrastructure Managers	<input checked="" type="checkbox"/>	<input checked="" type="checkbox"/>	<input checked="" type="checkbox"/>	<input checked="" type="checkbox"/>	iOS Configuration Profiles	<input type="checkbox"/>	<input type="checkbox"/>	<input type="checkbox"/>	<input type="checkbox"/>	JDS	<input type="checkbox"/>	<input type="checkbox"/>	<input type="checkbox"/>	<input type="checkbox"/>
Configurations	<input type="checkbox"/>	<input type="checkbox"/>	<input type="checkbox"/>	<input type="checkbox"/>																																																																													
Departments	<input type="checkbox"/>	<input type="checkbox"/>	<input type="checkbox"/>	<input type="checkbox"/>																																																																													
Device Enrollment Program	<input type="checkbox"/>	<input type="checkbox"/>	<input type="checkbox"/>	<input type="checkbox"/>																																																																													
Device Name Patterns	<input type="checkbox"/>	<input type="checkbox"/>	<input type="checkbox"/>	<input type="checkbox"/>																																																																													
Directory Bindings	<input type="checkbox"/>	<input type="checkbox"/>	<input type="checkbox"/>	<input type="checkbox"/>																																																																													
Disk Encryption Configurations	<input type="checkbox"/>	<input type="checkbox"/>	<input type="checkbox"/>	<input type="checkbox"/>																																																																													
Disk Encryption Institutional Configurations	<input type="checkbox"/>	<input type="checkbox"/>	<input type="checkbox"/>	<input type="checkbox"/>																																																																													
Dock Items	<input type="checkbox"/>	<input type="checkbox"/>	<input type="checkbox"/>	<input type="checkbox"/>																																																																													
eBooks	<input type="checkbox"/>	<input type="checkbox"/>	<input type="checkbox"/>	<input type="checkbox"/>																																																																													
Enrollment Profiles	<input type="checkbox"/>	<input type="checkbox"/>	<input type="checkbox"/>	<input type="checkbox"/>																																																																													
File Attachments	<input type="checkbox"/>	<input type="checkbox"/>	<input type="checkbox"/>	<input type="checkbox"/>																																																																													
File Share Distribution Points	<input type="checkbox"/>	<input type="checkbox"/>	<input type="checkbox"/>	<input type="checkbox"/>																																																																													
iBeacons	<input type="checkbox"/>	<input type="checkbox"/>	<input type="checkbox"/>	<input type="checkbox"/>																																																																													
Infrastructure Managers	<input checked="" type="checkbox"/>	<input checked="" type="checkbox"/>	<input checked="" type="checkbox"/>	<input checked="" type="checkbox"/>																																																																													
iOS Configuration Profiles	<input type="checkbox"/>	<input type="checkbox"/>	<input type="checkbox"/>	<input type="checkbox"/>																																																																													
JDS	<input type="checkbox"/>	<input type="checkbox"/>	<input type="checkbox"/>	<input type="checkbox"/>																																																																													
 JSS Settings Read and Update																																																																																	
 JSS Actions																																																																																	
 Recon																																																																																	
 Casper Admin																																																																																	
 Casper Remote																																																																																	
 Casper Imaging																																																																																	

Launch the setup assistant

By installing the package, you'll launch the setup assistant. `sudo dpkg -i jamf-im_1.0.0-0_all.deb`

Enter the host for your cloud instance: .. image:: images/jamf-im-sa-5.png

Enter the login and password you created earlier: .. image:: images/jamf-im-sa-4.png .. image:: images/jamf-im-sa-3.png

Enter the public IP Address of your Infrastructure Manager server: .. image:: images/jamf-im-sa-2.png

Setup the frequency. I use the default value of 30 seconds: .. image:: images/jamf-im-sa-1.png

If everything goes well, you should see the following: `` Enrollment invitation stored. Successfully obtained enrollment invitation from https://ftiff.jamfcloud.com ``

Create a LDAP Server

It's all downhill for now. Just kidding. This is the tricky part, as LDAP can be difficult to configure. We won't cover LDAP configuration here.

1. Open JSS
2. Go to System Settings > LDAP Servers
3. Add a LDAP Server
4. Choose "Configure Manually"
5. Choose "Enable LDAP Proxy Server"

Make sure you choose the right port number. It should be >1024 and be reachable from internet to your public IP address.

☒ **Enable LDAP Proxy Server**

Configure LDAP proxy server settings to connect to the LDAP server

Proxy Server

13.93.87.150

Proxy binding address and port number

13.93.87.150 : 31337

3.11.4 Troubleshooting

Log files

Log files are located here:

- /var/log/jamf-im-launcher.log
- /var/log/jamf-im.log

LDAP Server needs authentication

```
Error: javax.naming.NamingException: [LDAP: error code 1 - 000004DC: LdapErr: DSID-
→0C0906E8, comment: In order to perform this operation a successful bind must be
→completed on the connection., data 0, vldbl]; remaining name 'OU=Org,DC=fti,DC=io'
Suggestion: No suggestion available
```

Infrastructure Manager cannot bind to address

```
2016-08-30 14:43:16,834 INFO c.j.j.l.LpsServerSocketListener [lps: /13.93.87.
→150:31337 (ssl)] Sleeping for 5000 ms before retry of server socket bind for
→address /13.93.87.150:31337
2016-08-30 14:43:21,835 INFO c.j.j.l.LpsServerSocketListener [lps: /13.93.87.
→150:31337 (ssl)] Waking for retry of server socket bind for address /13.93.87.
→150:31337
```

```

2016-08-30 14:43:21,839 ERROR c.j.j.l.LpsServerSocketListener [lps: /13.93.87.
↳150:31337 (ssl)] Failed to obtain server socket for address /13.93.87.150:31337
com.jamfsoftware.jsam.lps.LpsException: Failed to bind server socket to [/13.93.87.
↳150:31337]
    at com.jamfsoftware.jsam.lps.socket.LpsSocketSupplier.
↳bindServerSocket(LpsSocketSupplier.java:136) ~[11:ldap-proxy:0.0.1.20160714202842]
    at com.jamfsoftware.jsam.lps.socket.LpsSocketSupplier.
↳createSslServerSocket(LpsSocketSupplier.java:61) ~[11:ldap-proxy:0.0.1.
↳20160714202842]
    at com.jamfsoftware.jsam.lps.LpsServerSocketListener.
↳safeCreateServerSocket(LpsServerSocketListener.java:150) [11:ldap-proxy:0.0.1.
↳20160714202842]
    at com.jamfsoftware.jsam.lps.LpsServerSocketListener.
↳bindServerSocket(LpsServerSocketListener.java:114) [11:ldap-proxy:0.0.1.
↳20160714202842]
    at com.jamfsoftware.jsam.lps.LpsServerSocketListener.
↳execute(LpsServerSocketListener.java:93) [11:ldap-proxy:0.0.1.20160714202842]
    at com.jamfsoftware.jsam.lps.LpsServerSocketListener.
↳run(LpsServerSocketListener.java:72) [11:ldap-proxy:0.0.1.20160714202842]
Caused by: java.net.BindException: Cannot assign requested address
    at java.net.PlainSocketImpl.socketBind(Native Method) ~[?:?]
    at java.net.AbstractPlainSocketImpl.bind(AbstractPlainSocketImpl.java:387) ~[?
↳:?:?]
    at java.net.ServerSocket.bind(ServerSocket.java:375) ~[?:?]
    at java.net.ServerSocket.bind(ServerSocket.java:329) ~[?:?]
    at com.jamfsoftware.jsam.lps.socket.LpsSocketSupplier.
↳bindServerSocket(LpsSocketSupplier.java:132) ~[?:?]
    ... 5 more
2016-08-30 14:43:21,840 INFO c.j.j.l.LpsServerSocketListener [lps: /13.93.87.
↳150:31337 (ssl)] Sleeping for 5000 ms before retry of server socket bind for
↳address /13.93.87.150:31337

```

This error might happen if your server is not bound to a public address (if *ip show add* doesn't show the public address). This happens if you create a NAT to map a public IP address to a private IP.

I haven't found the solution for this one yet. It seems that JAMF haven't thought of this use case.

3.12 Upgrade JSS, the Manual way

3.12.1 Disclaimer

I'm just listing what I usually do to upgrade JSS. If you have a better idea, please [contribute!](#)

Please first test on a test JSS.

3.12.2 Backup, Backup, Backup!

Make sure you have a working backup before doing anything. I use the following command: `java -jar /usr/local/jss/bin/JSSDatabaseUtil.jar backup -saveBackupTo ~/ -server jamf-mysql1.sdfsfsaa111.eu-west-1.rds.amazonaws.com -pass This` will save the backup in your user home folder. Send it to another computer.

In general, please follow this article: [Preparing to Upgrade the JSS](#)

3.12.3 Prepare the JSS Installer

Download the JSS Installer from JAMF Nation.

1. Connect to JAMF Nation
2. Go to [My Assets](#)
3. Click "Show JSS installer downloads"
4. Download JSS Manual Installation
5. Upload it to your Linux box
6. Unzip it, and you're ready to go!

Note: I usually upload it to my Distribution Point, and get it from my Ubuntu server using:

```
curl https://login:password@dp-1.fti.io/JSS_Installers/JSSInstallation9.93.zip
--digest -k -O
```

3.12.4 Upgrade JSS

If you have a Clustered JSS, please read [Upgrading the JSS in a Clustered Environment](#).

First, let's stop the JSS:

```
service jamf.tomcat7 stop
```

Then archive the current install to ~/ROOT-war-20160830.tgz:

```
tar czf ~/ROOT-war-20160830.tgz /usr/local/jss/tomcat/webapps/
rm -rf /usr/local/jss/tomcat/webapps/*
```

Copy the new ROOT.war and restart tomcat:

```
mv JSSInstallation/JSS\ Components/ROOT.war /usr/local/jss/tomcat/webapps/
service jamf.tomcat7 start
```

Just reconfigure the database, and everything should be working again!

3.12.5 If something goes wrong

Read the logs in /usr/local/jss/tomcat/logs/. Worst case, restore from backup and use the Linux automatic updater.

3.13 Restrict installation of macOS Sierra

Apple has yet to provide a way to prevent the update to a major OS release.

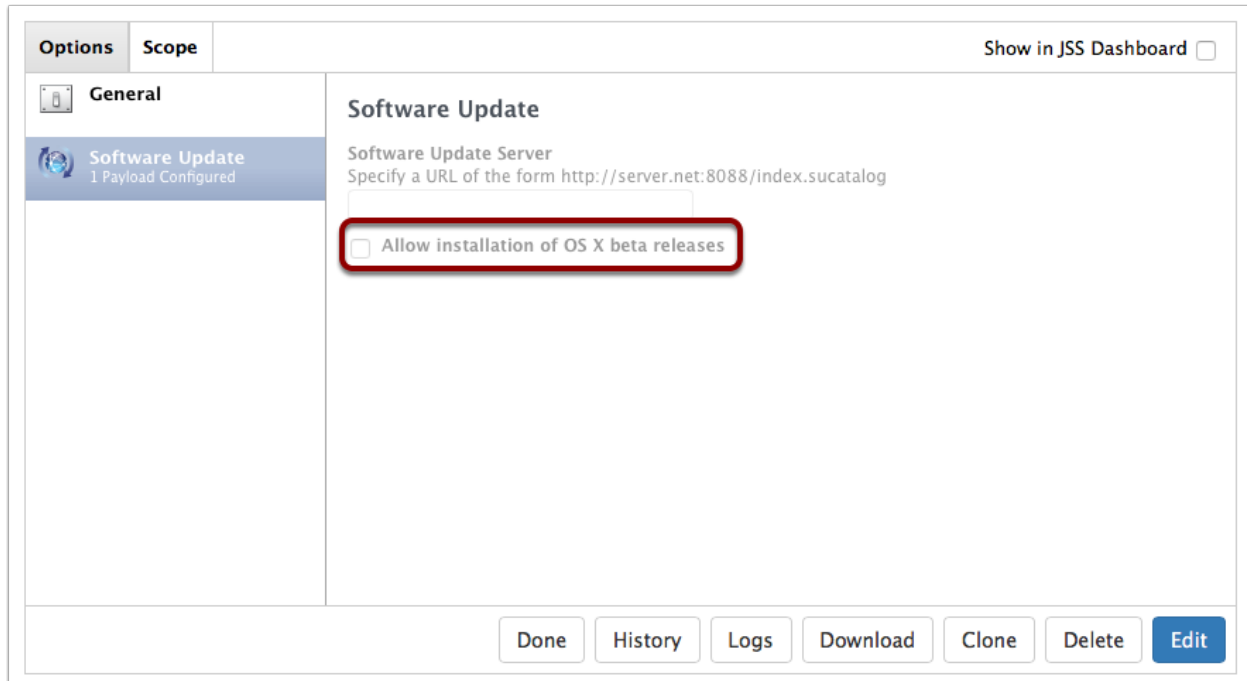
But, I believe it's for the greater good. Everyone should work toward supporting macOS on the day it is released. Apple gives us plenty of time to do this, thanks to the Developer, Apple Seed and Public betas.

If something goes wrong and you want to make sure your user don't upgrade to the newest macOS, follow these steps.

3.13.1 Restrict Beta Version

If your goal is to restrict the Beta version, Apple provides the following kbbase: <https://support.apple.com/en-us/HT203018>

On Casper Suite, simply create a Configuration profile with a "Software Update" payload and deselect "Allow installation of OS X beta releases".



The screenshot shows the Casper Suite configuration window for a "Software Update" payload. The left sidebar has tabs for "Options" and "Scope", with "Options" selected. Under "Options", there are two sub-tabs: "General" and "Software Update". The "Software Update" sub-tab is selected, showing "1 Payload Configured". The main area is titled "Software Update" and contains a "Software Update Server" section with a text input field for a URL. Below this, there is a checkbox labeled "Allow installation of OS X beta releases", which is currently unchecked and highlighted with a red rectangular box. At the bottom right of the window, there are buttons for "Done", "History", "Logs", "Download", "Clone", "Delete", and "Edit".

3.13.2 Restrict Retail Version

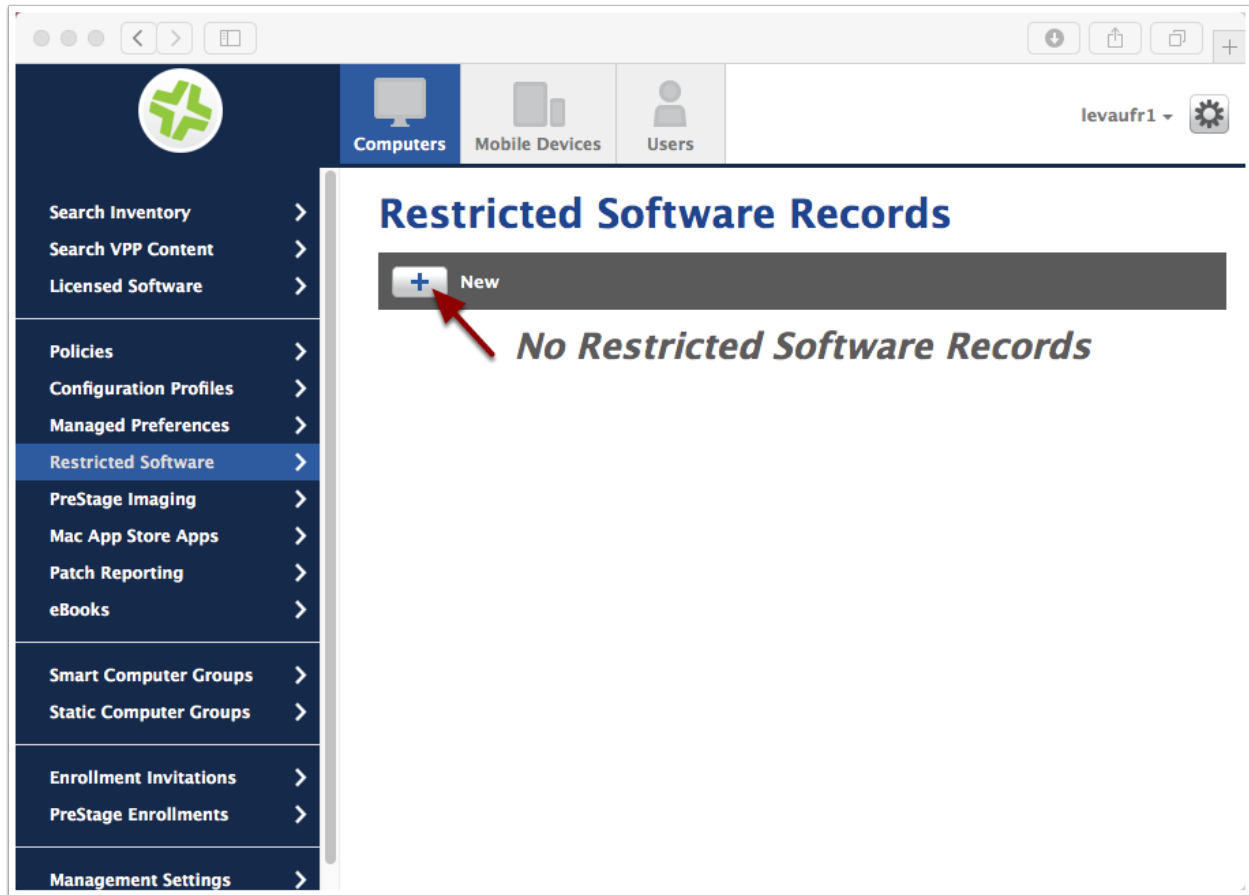
As stated above, Apple doesn't provide a way to disable a major OS upgrade.

We'll use JSS built-in "Restricted Software" mechanism to kill the Installation app as soon as it's launched by the user.

It is not super user-friendly, so make sure you communicate to the users first.

3.13.3 Restricted Software Records

1. Open your JSS
2. Go to Computers > Restricted Software
3. Click + "New"



3.13.4 Add Restricted Software Record

macOS Sierra installer uses the process "osinstallersetupd" to setup installation.

Blocking this process will ensure that no user will be able to launch the installation, even if renaming "Install macOS Sierra.app".

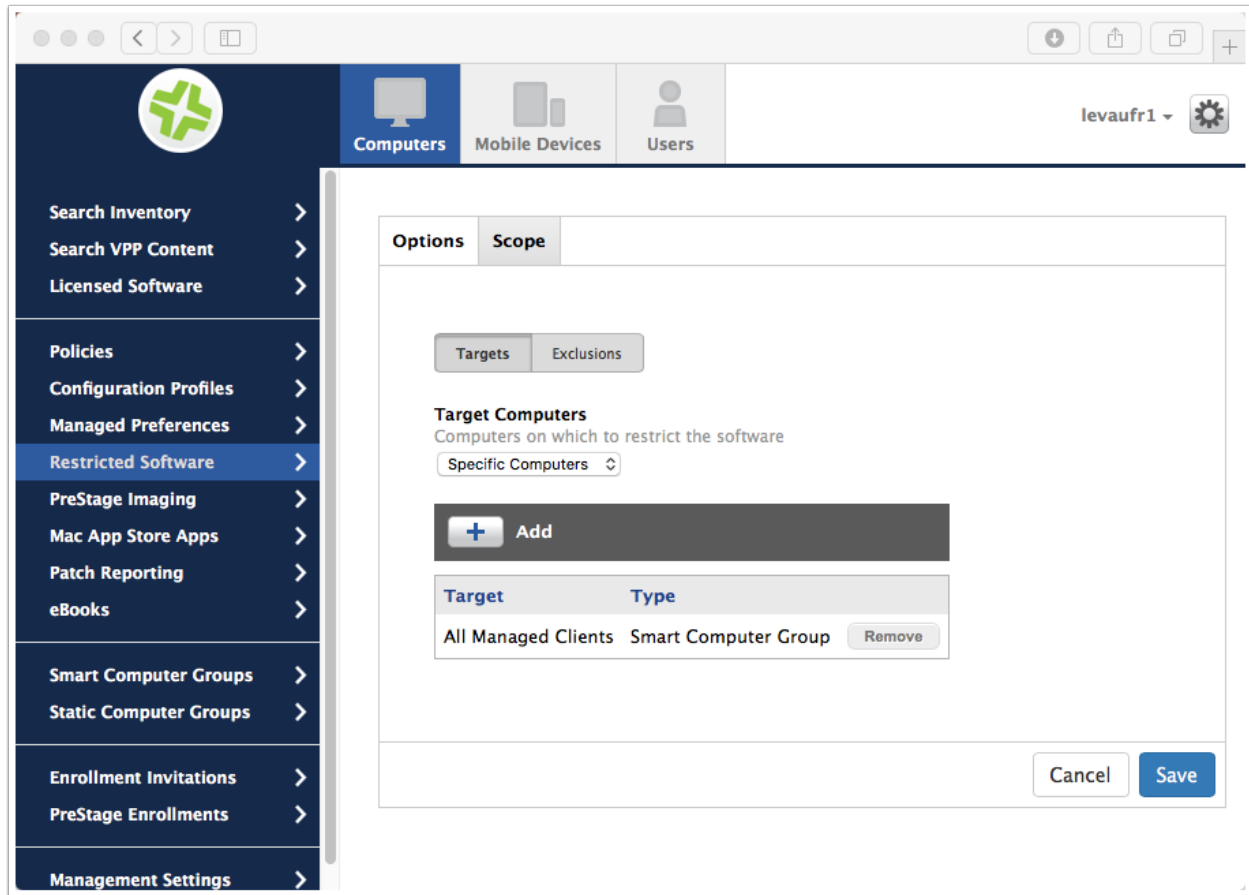
The screenshot shows the Jamf Pro web interface. At the top is a dark blue header with the Jamf logo on the left and navigation icons on the right. Below the header is a tabbed interface with 'Options' and 'Scope' tabs. The 'Options' tab is selected, displaying the following configuration options:

- Display Name**
Display name for the restricted software record
Text input: Block macOS Sierra
- Process Name**
Name of the process to restrict (e.g. "Chess", or "Chess.app"). The asterisk (*) can be used as a wildcard character
Text input: osinstallersetupd
- ☒ **Restrict exact process name**
Only restrict processes that match the exact process name. The match is case-sensitive and recognizes the asterisk (*) as a literal character
- ☐ **Delete application**
Delete the application running the restricted process
- ☒ **Send email notification on violation**
When the process is found, send an email notification to JSS users with email notifications enabled. An SMTP server must be set up in the JSS for this to work
- ☒ **Kill process**
Terminate the process when found
- Message**
Message to display to users when the process is found
Text area: Some of our critical software is incompatible with macOS Sierra. Please wait for our GO.

3.13.5 Scope Restricted Software Record

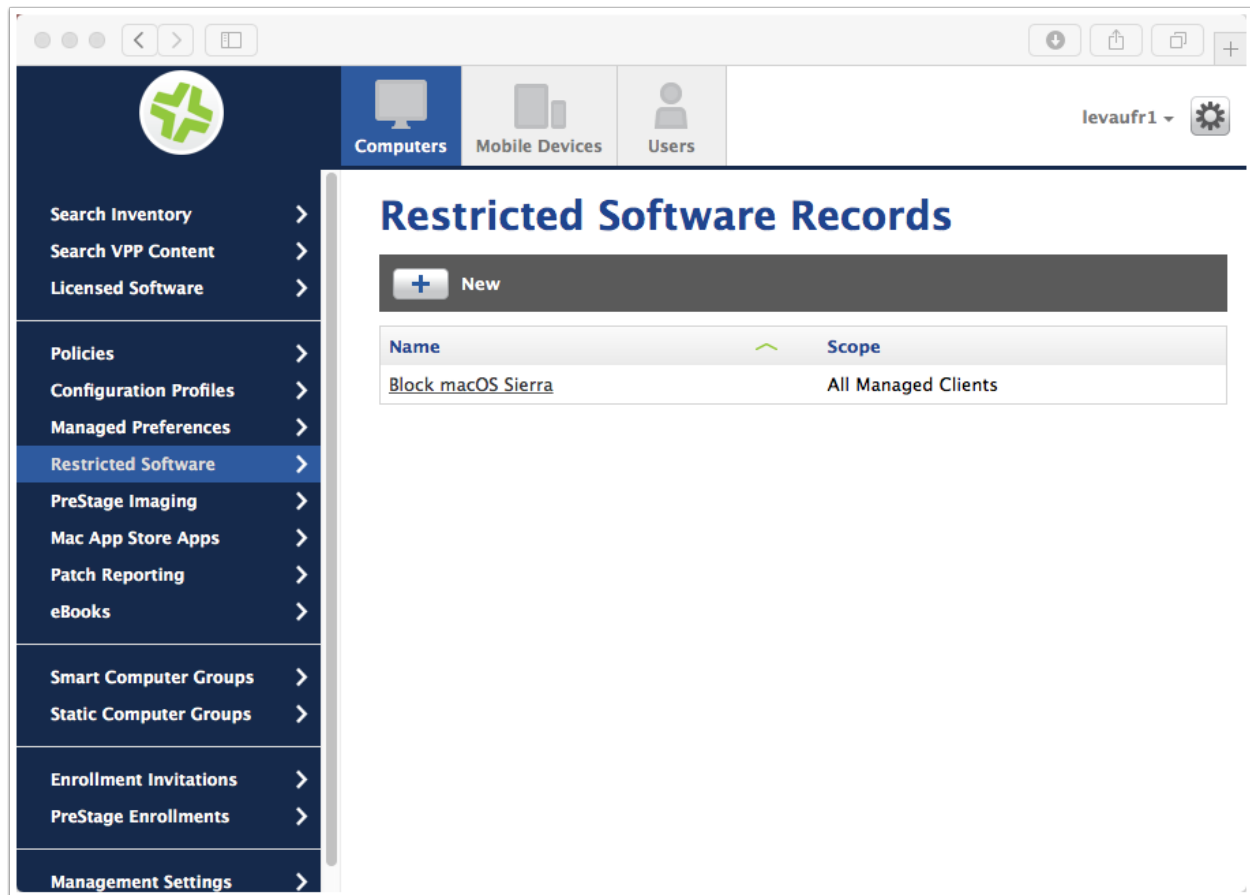
Choose the right Scope. "All Managed Clients" is usually a good choice.

I exclude from this Smart Group my test machines and my BYOD clients.



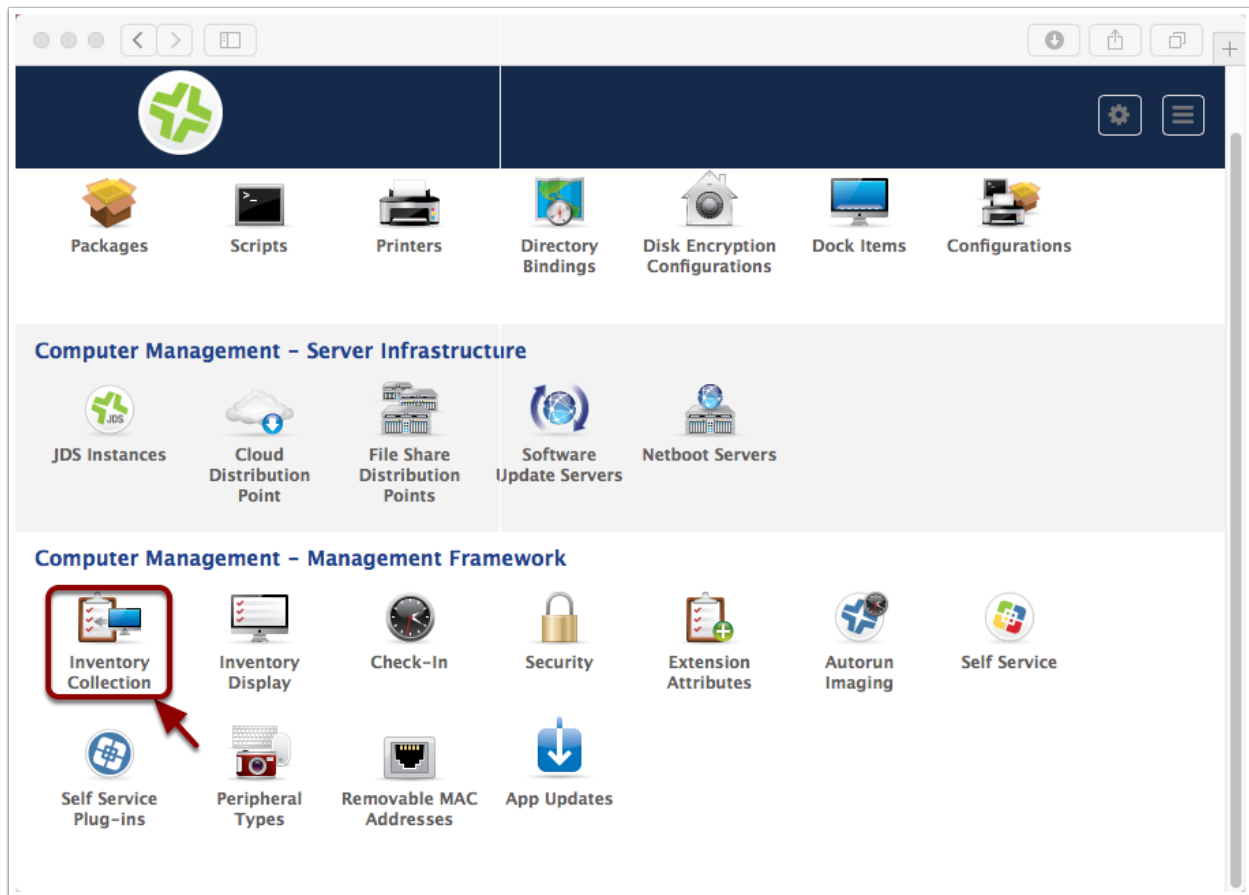
3.13.6 Restricted Software Records

Our Record is now ready.



3.13.7 Computer Inventory Collection

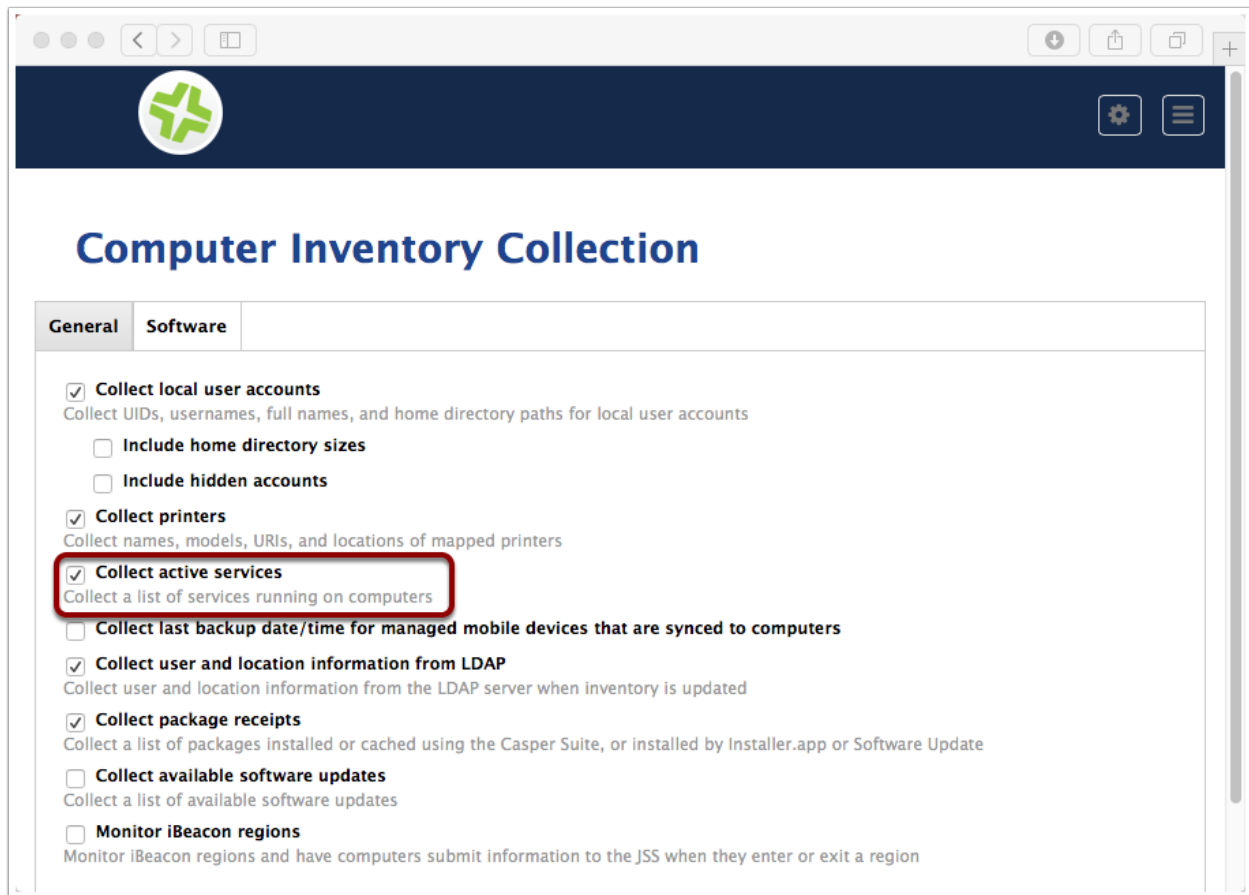
1. Navigate to Computers > Management Settings
2. Click on "Inventory Collection"



3.13.8 Edit Computer Inventory Collection

Check "Collect active services".

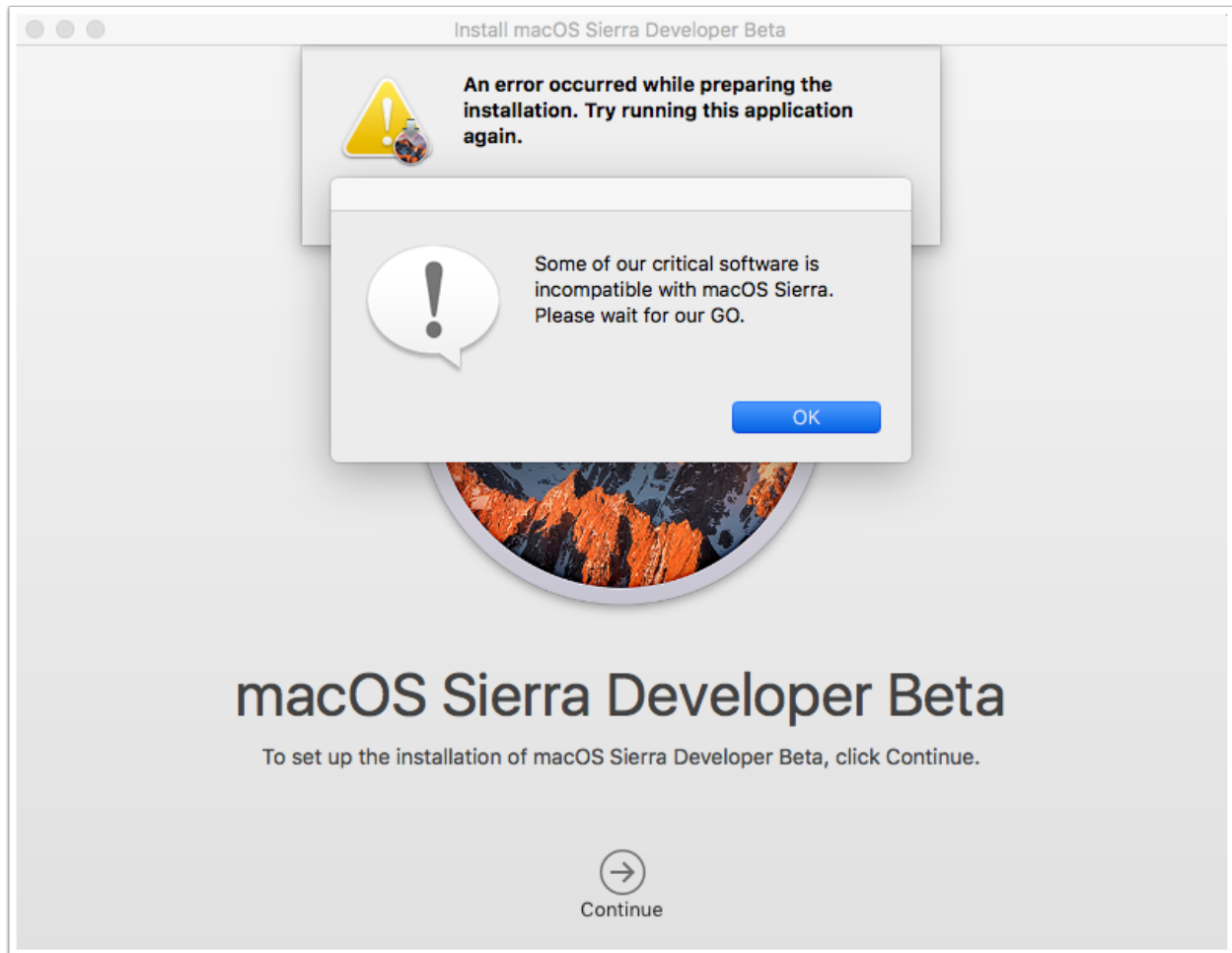
Note: I couldn't find relevant resources to confirm this was needed, but my tests indicate so



3.13.9 On the client

You may want to try a "jamf manage" and a "jamf policy" to refresh the management framework.

If you launch "Install macOS Sierra.app", you'll get the following screen.



4.1 Using AirWatch API

4.1.1 Initial Setup

According to the "AirWatch REST API Guide" PDF document that you can get in <https://my.air-watch.com>, you need:

- **the URL:** `https:///API/v1/help`
- **the Token:** `aw-tenant-code` (or API Key)
- **Authorization:** `Basic base64.b64encode("username:password")`

Enable Basic Authentication and get the Token

1. Select the right Organization Group (eg. Root)
2. Enable Basic Authentication from Groups > Groups & Settings > System > Advanced > API > REST > Authentication
3. Go to Group & Settings > System > Advanced > API > REST > General
4. Tick "Enable API Access" & add a service. Entering a service name will generate an API Key, which we'll need for API calls.

NOTE: This was called "Tenant Code" or "aw-tenant-code" previously & in the current (8.2) API documentation & will be referred as such within this post.^{[^accessing-airwatches-rest-api-with-python](#)}

Authorization

The easiest way is to use Basic authentication.

1. Make sure your admin has the correct role. In production, you should create a custom Role, but for test, Console Administrator is fine. Make sure he's in the correct OG, of course.

2. The form should be "username:password", encoded using Base64. You can do this on OS X terminal (see below)

```
$ python -c "import base64; print base64.b64encode('login:password')"  
bG9naW46cGFzc3dvcmQ=
```

Testing

Testing with Curl

```
$ curl -X "GET" "https://host.awmdm.com/API/v1/help" \ -H "Authorization: Basic_  
↪bG9naW46cGFzc3dvcmQ=" \ -H "aw-tenant-code: bG9naW46cGFzc3dvcmFzZGZ/  
↪2FmYXNkZmFkc2Zhc2Zk="
```

Testing with Python

```
# Install the Python Requests library:  
# from bash: pip install requests  
  
import requests  
  
def send_request():  
    # My API  
    # GET https://host.awmdm.com/API/v1/help  
  
    try:  
        response = requests.get(  
            url="https://host.awmdm.com/API/v1/help",  
            headers={  
                "Authorization": "Basic bG9naW46cGFzc3dvcmQ=",  
                "aw-tenant-code": "bG9naW46cGFzc3dvcmFzZGZ/2FmYXNkZmFkc2Zhc2Zk=",  
            },  
        )  
        print('Response HTTP Status Code: {status_code}'.format(  
            status_code=response.status_code))  
        print('Response HTTP Response Body: {content}'.format(  
            content=response.content))  
    except requests.exceptions.RequestException:  
        print('HTTP Request failed')
```

4.1.2 Queries (using Python)

I suggest using a REST editor to test your parameters, such as [Paw](#). It can also automatically generates python code.

Opening Request

```
import requests  
  
# Set your console URL (eg. 'http://cn23.awmdm.com')  
consoleURL = 'http://cn23.awmdm.com'
```

```
# Maximum set of values (1-10000 - default: 500)
lookupLimit = '500'

# Base64 encoded 'login:password' -- discouraged in production
b64EncodedAuth = 'bG9naW46cGFzc3dvcmQ='

# Your tenant code (see above)
tenantCode = 'bG9naW46cGFzc3dvcmFzZG/2FmYXNkZmFkc2Zhc2Zk='

# Your request. See API documentation.
request = '/API/v1/mdm/devices/search'

# It's a good idea to enclose the following in a try-except format.
try:
    # API call, pulling in all Employee Owned devices from the OG "All Peoples Devices"
    ↪ request = requests.get(consoleURL + request + "?pagesize=" + lookupLimit,
                            headers={"Authorization": "Basic " + b64EncodedAuth,
                                    "aw-tenant-code": tenantCode,
                                    "Accept": "application/json"},
                            timeout=30)

    # If the above gives a 4XX or 5XX error
    request.raise_for_status()

    # Insert your code here

except requests.exceptions.RequestException as e:
    print 'Get request failed with %s' % e
```

Getting all devices

```
request = '/API/v1/mdm/devices/search'
```

```
# Get the JSON from the above
deviceDetails = request.json()

# Pull in the 'Devices' dict only
deviceDetails = deviceDetails['Devices']

# For each device in deviceDetails
for device in deviceDetails:

    # Log each devices one by one
    print device
```

4.1.3 Using with OS X Clients

Unfortunately, the API doesn't-yet- support all the features from OS X Clients:

```
<AirWatchFaultContract xmlns="http://www.air-watch.com/" xmlns:i="http://www.w3.org/
↪ 2001/XMLSchema-instance">
  <ActivityId>56b6ed75-30a2-418e-84fa-f8e04d35506a</ActivityId>
  <ErrorCode>501</ErrorCode>
```

```
<Message>Functionality not supported for device type : AppleOsX</Message>  
</AirWatchFaultContract>
```

5.1 Additional Resources

Here are some additional resources created by the MacAdmin Community regarding Puppet that I'm aware of.

5.1.1 Michael Holt

- [Example Core Repo](#) - Additional code for adding to your own Puppet Repository
- [Puppetserver Docker Container](#) - Docker Container running Puppet, used in the "Getting Started" tutorial

5.1.2 Graham Gilbert

- [Puppet Outset](#) - Puppet module to manage Outset scripts and packages
- [Puppetserver Docker Container](#) - Another take on running Puppetserver on Docker
- [Puppetserver & Sal Docker Container](#) - another take on running Puppetserver on Docker and checking your Sal instance before signing the certificate
- [Personal Puppet](#) - some code that Graham has publicly shared from his Puppet Configuration
- [Setup Assistant Profiler](#) - Puppet Module that deploys an outset script to skip the setup assistant via a profile that is applied at every boot. Based on [Nick McSpadden's SetupAssistantProfiler](#)
- [Mac Admin](#) - A Puppet module to administer Mac OS X Machines
- [Grahamconfig](#) - Some more code that Graham has shared.
- [Puppet Run](#) - A module to run Puppet periodically on OS X
- [Mac Facts](#) - A collection of custom Facter facts to aid with the management of OS X Machines
- [Sal Client](#) - A module to configure the Sal Server & Key on your machine. (Requires Mac Admin Module)
- [MacDefaults](#) - A Puppet module to manage defaults on an OS X system

5.1.3 Samuel Keeley

- [Mac Profilers Handler](#) - A module to create and manage Profiles.

5.1.4 Brian Warsing

- [ManagedMac](#) - A Comprehensive Puppet module for OS X.

5.2 Additional Information

This is not intended to be a comprehensive list but I'll do my best to add as I find additional resources. Feel free to contribute more as well with a pull request (See the [Contributing](#) section under **00 About** for more details).

5.3 Basic Configuration

This tutorial goes over how to add some basic configuration to your Puppetserver for managing your macs.

Originally Posted at: www.mholt.tech/blog/2015/12/07/basic-puppet-configuration/

5.3.1 Configuration Overview

So this is the second post about Puppet. I'm going to go through a brief overview deploying some configuration to your computer using Puppet.

If you don't already have Puppetserver running, please go back to my previous post [Here](#) to get up and running with Puppet. If you aren't following from my previous post some of this will be different depending on your Environment but I will be continuing with the setup on the Docker Image that I've created. We're going to start with some basic configuration so you can understand how the basics work. Next year I'll be providing a repository with more detailed configuration options that won't necessarily be covered here.

There are multiple parts to applying configurations to your computer. Inside of the Core Repo folder that you cloned previously you'll see a folder named **Hiera**.

First off, you have Hiera. These files are used to apply configuration to your machine.

- `machine/c02n5heug3qj.yaml` (You may have renamed this in the previous post)
- `role/test.yaml`
- `common.yaml`

The files inside of `machine` are optional and used if you want to apply a special configuration option to a specific machine. These files should be named after the serial number of the machine, always in lower case.

The files in `role` are used to create a configuration file that is applied to multiple machines and is defined as a custom fact as done in the previous post.

The final file, `common.yaml` is a master configuration that is applied to all machines.

When defining specific configuration data, you can have the same variable in multiple files and the one that is seen first in the order of files above is what is applied.

Lets start with opening `common.yaml`. In this file you'll see a few lines of code. Classes are configuration functions defined in manifests either from Modules that are included in Puppetfile, or additional custom manifests defined in `site/(profiles or roles)/manifests`.

The first line you see under classes is "puppet_run". This is calling a function inside of a Puppet Module by [Graham Gilbert](#) called [Puppet Run](#). This module configures puppet agent on the machine and configures puppet to automatically run every 30 minutes along with a random delay of anywhere between 0 and 20 minutes to prevent all of your machines from checking in at the same time.

The next line you'll see under Classes is `roles::default`. This calls a custom configuration file inside of `site/roles/manifests/default.pp` and simply run an echo command outputting "Default Role" when running `puppet agent -t`

The final line is a variable, `puppet_run::server_name`. This variable is what tells the Puppet Run module what your puppet servers name is. When it comes to variables you can override them on a per role or per machine basis by also including the variable along with the corresponding class inside of the respective role or machine yaml file.

5.3.2 Lets add some custom configuration

Your needs and environment are going to vary from mine but i'm going to go over some basic configuration options using [ManagedMac](#) by [dayglojesus](#).

Add some text to Login Window.

We're going to start off with configuring puppet to display a message on the login window.

We'll start off with adding a message that will be applied to everyone. To do this, lets open up `common.yaml` and add these lines.

Under `classes` add:

```
- managedmac::loginwindow
```

now at the bottom of the file lets add the variable to define the message.

```
managedmac::loginwindow::loginwindow_text: "This is a global message"
```

Once this is done go ahead and save, commit, and push the file to your git repository. Once this is done you need to log into your Docker server and run

```
docker exec -it puppetserver r10k deploy environment -pv
```

Once your puppetserver has been updated lets manually run Puppet on your test machine

```
puppet agent -t
```

Now go ahead and log out and you should see a message on the login window saying "This is a global message".

Now lets go ahead and define a machine specific message on the login window.

Create a file inside of `hiera/machine/<serial-number>.yaml` (Ensure that you use all lower case). Inside of this file go ahead and populate with:

```
---
classes:
  - managedmac::loginwindow
managedmac::loginwindow::loginwindow_text: "This is a machine message"
```

Go ahead and commit and push this to your git repository, then once again run this on the server:

```
docker exec -it puppetserver r10k deploy environment -pv
```

Afterwards, run on your machine

```
puppet agent -t
```

Log out and you will now see your login window saying "This is a machine message" instead of "This is a global message".

There are a lot more configuration options for ManagedMac and they can all be found [Here](#).

5.3.3 Hide Puppet User

Lets go ahead and do one more thing before we wrap up this session. We're going to hide the annoying "Puppet" user that shows up on the login window.

Go ahead and navigate to `site/profiles/manifests` and create a file called `hidepuppetuser.pp`.

Inside of this file, insert

```
class profiles::hidepuppetuser {  
  exec {  
    'Hide Puppet User':  
      command => "/usr/bin/defaults write /Library/Preferences/com.apple.loginwindow_  
↳HiddenUsersList -array-add puppet",  
  }  
}
```

Now go ahead and save this file and close it. The next step is to tell the machines to go ahead and run this manifest. We want to apply this to ALL machines, so go ahead and edit `hiera/common.yaml` and under classes insert

```
- profiles::hidepuppetuser
```

Save this file, then commit and push both files to your git repository. After that, run `r10k` to update your Puppetserver and then run `puppet` on your test machine. After this is done, you should no longer see the user "Puppet" when you are at the login window.

This concludes this blog post and gives you an idea of how to use Puppet to configure your machines. As I mentioned previously, i'll be posting a number of my configurations up on Github when I get back from Christmas Vacation.

UPDATE: An Example Core Repository can be found [HERE](#)

5.4 Getting Started

This tutorial goes over how to get started with running Puppet in a Docker Container to manage your mac configuration.

Originally Posted at: www.mholt.tech/blog/2015/12/04/getting-started-with-puppet/

5.4.1 Installing Docker

I'm going to assume you already have a working Ubuntu 14.04 Server. If not, I Highly recommend using Linode, which is what we use to run our Management Platform. You can sign up [Here](#).

Our first job after SSH'ing into the server is to get Docker installed. This is a very easy process.

First lets makes sure we have wget installed:

```
which wget
```

If nothing is returned, we need to install wget:

```
sudo apt-get update
sudo apt-get install wget
```

And now we can install Docker.

```
wget -qO- https://get.docker.com/ | sh
```

Enter your password when asked and then you're done.

If you aren't running as root (which isn't secure anyways so I hope you aren't), you can give a user access to Docker without having to grant sudo and preface all docker commands with sudo. This can be done by running

```
sudo usermod -aG docker <username>
```

5.4.2 Clone the Core Repo

Now before we continue with docker we need to clone the base configuration that our Puppetserver will be using. I'm going to go with the assumption that you are familiar with git. If this is you're first time there are a lot of tutorials on the internet, personally I like to use a GUI and recommend [SourceTree](#).

This is also going to be based on using Bitbucket for storing your configurations privately. Bitbucket gives you unlimited *PRIVATE* repositories for free which I highly recommend doing to keep your configuration data private. This is also compatible with GitHub as well. You can get a BitBucket account [here](#).

Here's how to get started with your own copy of the Core Repository:

1. To start off, go to Bitbucket's website and log in.
2. Go to Repositories -> Import Repository
3. For **URL**, enter: `https://github.com/MichaelHoltTech/puppet-core_repo.git`
4. For **Name**, you may keep the name of the imported repository or change this to anything you want.
5. For **Access Level**, make sure to check "This is a private repository"
6. Click **Import Repository** to import the base repository into your Bitbucket account. It'll take a moment for the code to import and then you can continue.

5.4.3 Start setting up Puppetserver

Now we're ready to go back to Docker and start setting up Puppetserver. This is a very simple process.

We'll start off with creating what is called a Volume Container. This will store the SSL Certificates used by Puppet so that the container can be updated as needed without worrying about losing some important configuration.

On your Ubuntu server, start by running this command. *Note: If you are not logged in with root then preface all commands from here on out with sudo*

```
docker pull busybox
docker run -d --name data_puppet \
-v /root/.ssh \
```

```
-v /var/lib/puppet/ssl \
busybox
```

Now we have to create a file in order for the Puppetserver to know how to get your Core Repository. If you skip this step you'll run into some issues when we get to restarting the container. I prefer nano, but you use whatever editor you prefer on the Linux Server.

To begin, lets create some directories and grant all users inside of the Docker user group access.

```
sudo mkdir -p /usr/local/docker/puppetserver
sudo chgrp -R docker /usr/local/docker
sudo chmod -R 770 /usr/local/docker
cd /usr/local/docker/puppetserver
nano custom.yaml
```

Inside of custom.yaml insert the following contents, replacing the repo url in single quotes with repo's SSH URL found by clicking: ... -> Clone -> Change HTTPS to SSH.

```
---
repo_url: 'git@github.com:MichaelHoltTech/puppet-core_repo.git'
```

Now lets go ahead and close and save this file

Now that we have that out of the way we can get started with the Puppetserver. Make sure you replace puppet.example.com with the url/hostname you intend to use for your puppet server.

```
docker pull michaelholtttech/puppetserver
docker run -d --name=puppetserver \
  --volumes-from data_puppet \
  -v /root/.ssh \
  -v /var/lib/puppet/ssl \
  -v /usr/local/docker/puppetserver/custom.yaml:/root/bootstrap/hiera/data/custom.
  yml \
  -e PUPPETSERVER_JAVA_ARGS="-Xms384m -Xmx384m -XX:MaxPermSize=256m" \
  -p 8140:8140 \
  -h puppet.example.com \
  --restart="always" \
  michaelholtttech/puppetserver
```

After you have run those commands we need to monitor the logs for some important information that will be provided. This can be done by running:

```
docker logs -f puppetserver
```

Once the initial scripts have run you'll see Public Key displayed in the logs. You need to take this and enter it as a Deployment Key for your Repository. This can be done by browsing to your repository on the Bitbucket Website, and then going to Settings -> Deployment Keys -> Add Key. Copy/Paste the Publickey starting with ssh-rsa and ending with R10K Deployment Key

Now that we've gotten that done we're ready to let Puppet finish bootstrapping itself. This can be done by copy/pasting the commands after the Publickey in the logs that were looking at in the last step. You can also run:

```
docker stop puppetserver
docker start puppetserver
```

Now if you watch the logs again you can see puppet preparing itself

```
docker logs -f puppetserver
```

This will take several minutes to complete. When it is done you will see a line saying [p.s.m.master-service] Puppet Server has successfully started and is now ready to handle requests

Now that your puppetserver is running there's only one last command to run. This command is only needed if there isn't already data existing inside of data_puppet. This command is also set up to automatically run ever 30 minutes inside of the container.

```
docker exec -it puppetserver puppet agent -t
```

5.4.4 Set up you're first client!

Whew we're almost there. Not much longer until you will have your first client checking into your brand new Puppet-server.

Let's start with a fresh Mac OS environment, be it a VM or spare computer. We're going to have to start off by installing two packages on the machine... Puppet & Facter.

Puppet v3.8.4 can be downloaded [HERE](#).

Facter v2.4.4 can be downloaded [HERE](#).

Once downloaded go ahead and install these onto your test machine.

At this point all that's left is to get your machine configured. This is extremely simple and can be done with running one command in terminal, replacing puppet.example.com with your puppetserver's URL. *If you don't have a DNS record for it, make sure you add a manual entry inside of /etc/hosts on your test machine!*

```
sudo puppet agent -t --certname $(ioreg -l | awk '/IOPlatformSerialNumber/ { split($0,
↪ line, "\""); printf("%s\n", line[4]); }' | tr '[:upper:]' '[:lower:]') --
↪waitforcert 20 --server puppet.example.com
```

You now have your first machine up and running on Puppet! Congratulations!

There's plenty of information online if you want to begin playing with some configuration settings inside of the Core Repository.

We'll go over this more in a future post, but to configure a role we need to create a fact on the local machine. This can be done by running:

```
sudo mkdir -p /etc/facter/facts.d
sudo nano /etc/facter/facts.d/computer_role.yaml
```

Paste the following inside of computer_role.yaml

```
---
computer_role: "test"
```

Since the machine is now configured with puppet, you can trigger puppet by running a much simpler command:

```
sudo puppet agent -t
```

If you have added the computer_role fact, you should get an output similar to the following when you run puppet agent -t:

```
Info: Retrieving pluginfacts
Info: Retrieving plugin
Info: Loading facts
Info: Caching catalog for c02n5heug3qj
Info: Applying configuration version '1449305286'
Notice: Test Role
Notice: /Stage[main]/Roles::Test/Notify[Test Role]/message: defined 'message' as
↳ 'Test Role'
Notice: Default Role
Notice: /Stage[main]/Roles::Default/Notify[Default Role]/message: defined 'message'
↳ as 'Default Role'
Notice: Common Profile
Notice: /Stage[main]/Profiles::Common/Notify[Common Profile]/message: defined 'message'
↳ as 'Common Profile'
Notice: Test Profile
Notice: /Stage[main]/Profiles::Test/Notify[Test Profile]/message: defined 'message'
↳ as 'Test Profile'
Notice: Finished catalog run in 13.84 seconds
```

5.4.5 Additional Notes

Whenever you make a change to your Core Repo, you also need to manually tell your Puppetserver to pull in the changes. This can be done by running this on the server:

```
docker exec -it puppetserver r10k deploy environment -pv
```

Yay! We've made it to the end and we now have a functional Puppetserver! If you've made it this far give yourself a pat on the back, it took me much longer to get up and running with Puppet when I first started.

Here's a few quick notes:

1. This is a new Docker image and could have some bugs and issues. I'm relying on the community to help identify these issues.
2. I'm not an expert at this, I just started using puppet a few months ago myself. If you see areas that could be improved feel free to submit a pull request.
 - (a) The Puppetserver code can be found [here](#).
 - (b) The Core Repo code can be found [here](#).
 - (c) An Example Repository with more code can be found [here](#).
 - (d) The Base Image code can be found [here](#). It is based off of work done by phusion, located [here](#).
3. I'm currently not running this Image in Production. I plan on moving over to it after the Christmas Holidays as I continue to document our Management Platform.

Stay Tuned for the next post! No promises but i'll see if I can at least get one more post up documenting how to begin programming some configuration options. If I don't get to it, I'll definitely have time in January! (I'll do my best not to keep you waiting 2 months this time)

6.1 macOS Updates

6.1.1 com.apple.commerce

- **AutoUpdate** → Install app updates
- **AutoUpdateRestartRequired** → Install OS X updates

6.1.2 com.apple.SoftwareUpdate

- **AutomaticCheckEnabled** → Automatically check for updates
- **AutomaticDownload** → Download newly available updates in the background
- **ConfigDataInstall** → Install system data files
- **CriticalUpdateInstall** → Install security updates ([Der Flounder](<https://derflounder.wordpress.com/2014/12/24/managing-os-xs-automatic-security-updates/>))
- **AllowPreReleaseInstallation** → Allow OS X Beta ([HT203018](<https://support.apple.com/HT203018>))

6.1.3 Deploying

As of 2017.07.27, deploying com.apple.commerce settings via profile is unpredictable. Forcing the settings to “false” appears to work, but forcing the settings to “true” does not. For maximum reliability, use a [script](#).

With Casper Suite

1. Create a [script](#) from “Computer Management > Scripts”
2. Create a Policy “Once per Computer” to execute this script

3. Create a Policy “Once per Week” with Software Updates > Install Software Updates from “Each computer’s default software update server”. Don’t forget to set restart options.

7.1 Google Chrome

7.1.1 Configure Suggested Preferences

To do that, we'll create a file: /Library/Google/Google Chrome Master Preferences

Use these pages as a reference: * <<https://support.google.com/chrome/a/answer/187948>> * <<https://www.chromium.org/administrators/configuring-other-preferences>> (may not be up to date)

For example:

```
{
  "homepage" : "http://www.maclovin.org",
  "homepage_is_newtabpage" : true,
  "browser" : {
    "show_home_button" : true,
    "check_default_browser" : false
  },
  "bookmark_bar" : {
    "show_on_all_tabs" : true
  },
  "distribution" : {
    "skip_first_run_ui" : true,
    "show_welcome_page" : false,
    "import_search_engine" : true,
    "import_history" : false,
    "create_all_shortcuts" : true,
    "do_not_launch_chrome" : true,
    "make_chrome_default" : false
  },
  "first_run_tabs" : [
    "http://www.maclovin.org",
    "welcome_page",
    "new_tab_page"
  ]
}
```

```
]
}
```

If you want to delete every user Preferences and Cache, and launch Chrome as if it was its first run, use the following commands:

```
rm ~/Library/Preferences/com.google.Chrome.plist
rm -rf ~/Library/Caches/Google/
rm -rf ~/Library/Application\ Support/Google/Chrome/
Applications/Google\ Chrome.app/Contents/MacOS/Google\ Chrome --force-first-run
```

-> Good resource on Google Chrome's Command Line options

7.2 Microsoft Office 2016

7.2.1 Changing the Name and Initials

If you deployed Office 2016 with a volume license, chances are your user will complain that the name used for reviews (or Auto-Track changes) is “Microsoft Office User” with initials “MO” (or any localized variation).

It is stored here : ~/Library/Group Containers/UBF8T346G9.Office/MeContact.plist

```
$ defaults read "/Users/fti/Library/Group Containers/UBF8T346G9.Office/MeContact.plist"
↪ "
{
    Initials = FTI;
    Name = "Francois Levaux-Tiffreau";
}
```

How to script it

A simple script that sets both the Office 2016 Name and Initials values in the MeContact.plist for the currently logged in user.

```
#!/bin/bash

PATH=/bin:/usr/bin:/usr/sbin:/usr/local/bin:/usr/libexec
export PATH

FullScriptName=$(basename "$0") # Variable used to store the file name of this script

DscIsearchPath="/Local/Default" # Variable used to store the search path used by the
↪ dscI command.

# Get the username of the person currently running the script.
username=$(id -un)

echo "$FullScriptName -- Personalizing Office 2016 for $username"

# Lookup the user's name from the local directory
firstname=$(dscI "$DscIsearchPath" -read /Users/$username RealName | tr -d '\n' | awk
↪ '{print $2}')
lastname=$(dscI "$DscIsearchPath" -read /Users/$username RealName | tr -d '\n' | awk '
↪ '{print $3}')
```

```

# Get the first letter for the initial
firstInitial=${firstname:0:1}

# Get the first letter for the initial
lastInitial=${lastname:0:1}

# Concatenate the initials together into one variable.
UserInitials="$(echo $firstInitial$lastInitial) "

# Concatenate the full name together into one variable.
UserFullName="$(echo $firstname $lastname) "

# Remove any leading or trailing whitespace
UserFullName="$(echo -e "${UserFullName}" | sed -e 's/^[[:space:]] //' -e 's/
↳[[:space:]]$//') "
UserInitials="$(echo -e "${UserInitials}" | sed -e 's/^[[:space:]] //' -e 's/
↳[[:space:]]$//') "

defaults write "/Users/$username/Library/Group Containers/UBF8T346G9.Office/MeContact.
↳plist" Name "$UserFullName"

defaults write "/Users/$username/Library/Group Containers/UBF8T346G9.Office/MeContact.
↳plist" Initials "$UserInitials"

echo "$FullScriptName -- Completed personalizing Office 2016 for $username"

# Quit the script without errors.
exit 0

```

7.2.2 Deploying Office Templates

It's technically possible to deploy your templates in `~/Library/Group Containers/UBF8T346G9.Office/User Content.localized/Templates.localized`, but unfortunately this container won't exist until the user launches an Office application. There's a better way.

Simply drop your templates in `/Library/Application Support/Microsoft/Office365/User Content.localized/Templates.localized` to get them available for all users at any time. They will be available to the user in *File > New from Template...* You can also create subfolders (won't change display). As they're directly referenced, any change to this folder will be reflected in Office (they're not copied).

How to script it

You can either create a package to deploy the templates at the right place, or use this script to create the directories:

```

# This script checks for and creates if needed the directories for Office 2016_
↳templates for Word, PowerPoint and Excel
# Made by Rich-the-Great

function test_command {
    "$@"
    local status=$?
    /bin/echo -n "Executing '$@'... "
    if [ $status -ne 0 ]; then
        echo "ERROR: $@" >&2
    fi
}

```

```
        exit $status
    fi
    echo "OK"
}

if [[ ! -d "/Library/Application Support/Microsoft/Office365/User Content.localized/
↳ Templates.localized" ]]; then
    /bin/echo "Necessary support directories for Office 2016 templates not found."
    /bin/echo "Creating necessary support directories for Office 2016 templates."

    test_command /bin/mkdir -p "/Library/Application Support/Microsoft/Office365/User_
↳ Content.localized/Templates.localized"

    # We don't use -R to make sure we don't step on anybody's shoe
    # On a fresh 15.19.1 install, perms are root:wheel 755
    test_command /usr/sbin/chown root:wheel "/Library/Application Support/Microsoft/
↳ Office365"
    test_command /usr/sbin/chown root:wheel "/Library/Application Support/Microsoft/
↳ Office365/User Content.localized"
    test_command /usr/sbin/chown root:wheel "/Library/Application Support/Microsoft/
↳ Office365/User Content.localized/Templates.localized"
    test_command /bin/chmod 755 "/Library/Application Support/Microsoft/Office365"
    test_command /bin/chmod 755 "/Library/Application Support/Microsoft/Office365/User_
↳ Content.localized"
    test_command /bin/chmod 755 "/Library/Application Support/Microsoft/Office365/User_
↳ Content.localized/Templates.localized"
fi
```

7.3 SQL Clients

7.3.1 IBMi DB2 Databases

You could use the IBM System i Navigator, but how about a tool you can use on all DB (PostgreSQL, MySQL, SQL Server, DB2...). I must warn you: it's Java from the nineties.

Components needed

- Java 1.8 JDK
- JTOpen
- Squirrel

JTOpen

The IBM Toolbox for Java is a library of Java classes supporting the client/server and internet programming models to a system running IBM i (or i5/OS or OS/400). The classes are used by Squirrel to easily access IBM i data and resources.

1. Download and install Java 1.8 JDK
2. Download JTOpen

3. Copy lib/ where you'd like. I believe the right path is '/usr/local/lib/jtopen/':

```
``sudo ditto ~/Downloads/jtopen_9_0/lib /usr/local/lib/jtopen_9_0``
```

SquirrelL

1. Download **'Squirrel <[<http://www.squirrelsql.org/#installation>>'_](http://www.squirrelsql.org/#installation)**
2. Open squirrel-sql-3.7-MACOSX-install.jar
3. Make sure you select "Optional Plugin - DB2"
4. Click on Drivers > JTOpen(AS/400)
5. Click on Extra Class Path
6. Click Add, then choose /usr/local/lib/jtopen_9_0/java8/jt400.jar and click OK.
7. You should get a green message "Driver class com.ibm.as400.access.AS400JDBCdriver successfully registered for driver definition: JTOpen(AS/400)"
8. Click on Aliases > + (blue cross)
9. Select Driver: JTOpen(AS/400) (it should have a blue check mark)
10. Enter your info, click OK. It should now be working!

[More info...](#)

8.1 Antivirus

8.1.1 Microsoft SCEP

title

placeholder

9.1 Contributing

9.1.1 Community Structure

- **Owner** is currently @ftiff
- **Maintainers and Collaborators** are all the members of [Shufflepuck](<http://github.com/Shufflepuck>)
- **Contributors** is everyone who has had a pull request merged into this project
- **Community Members** are all the MacAdmins. You're part of it if you professionally administer Macs

We welcome everyone interested in sharing to the MacAdmin community at large.

9.1.2 Getting Started

If you're new to the MacAdmin community, please read the doc Getting Started.

9.1.3 Best practices?

This site is about things that have a large consensus in the MacAdmin Community. For example:

- thin imaging is better than thick imaging (not always).
- Apple maintains only the last three major OS releases (well... we had a security update for 10.6.8 after 10.11 was released[#]_).

So yes, defining “best practice” is not that easy. Think of what you will tell to your apprentice.

9.1.4 What is a good doc?

A good documentation:

- **uses International English** - Keep the sentences clear, simple and straight to the point;
- **is neutral** - Show multiple point-of-views. Be accurate by citing reliable and authoritative sources. Debate is welcomed, but only on Issues and Pull Requests;
- **uses Free content** - As per the [license](<http://creativecommons.org/licenses/by-sa/4.0/>), no one owns the content;
- **is respectful** - Follows the [Contributor Code of Conduct v1.3.0](<http://contributor-covenant.org/version/1/3/0/>).
- **is honest, but positive.**

9.1.5 Contributing docs

We use [Github](#) to manage the whole content. You should be familiar with [how to contribute on GitHub](#). I personally use [TextMate](#) to edit the [reStructuredText](#) documents.

The easiest way for quick edits is to click on the “Edit on GitHub” on upper right of every page.



For more substantial edits, please fork the project and open a pull request.

Note: You can always [Create an issue](#). Please do it if you don't have time!

9.2 License

License is Creative Common [Attribution-ShareAlike 4.0 International](#) (CC BY-SA 4.0)

This means:

9.2.1 You are free to:

- **Share** — copy and redistribute the material in any medium or format
- **Adapt** — remix, transform, and build upon the material

for any purpose, even commercially.

The licensor cannot revoke these freedoms as long as you follow the license terms.

9.2.2 under the following terms:

- **Attribution** — You must give appropriate credit, provide a link to the license, and indicate if changes were made.

- **ShareAlike** — If you remix, transform, or build upon the material, you must distribute your contributions under the same license as the original.

[Read more...](#)

9.3 MacAdmins Resources

9.3.1 Discussion

- **MacAdmins Slack** <<https://macadmins.herokuapp.com>> - if you like instant communication;
- **##osx-server** <<http://webchat.freenode.net/?channels=#%23osx-server>> - this was the go-to before Slack existed. Try the [Field Guide to IRC](#) from AFP548;
- **JAMF Nation** <<http://jamfnation.jamfsoftware.com/>> - Primarily focused on JAMF Product, this is nonetheless a great resource;
- **Munki Google Group** <<https://groups.google.com/d/forum/munki-dev>> -
- **Mac Enterprise Mailing List** <<http://www.macenterprise.org/mailing-list>> -

9.4 Tools for MacAdmins

9.4.1 Editors

TextEdit

Being free and available on every Mac, this is a no-brainer.

- Make sure you edit in text-only (CMD+SHIFT+T)
- Add it to your Dock for quick drag 'n drop
- in CLI, use `open -e [file]` to open in TextEdit

Sublime Text

Download for free [here](#)

- This is the preferred choice for a lots of developers
- Useful for highlighting
- Add it to your [Command Line](#)

TextMate

Download for free [here](#)

- My preferred editor. Thanks to [@lolopb](#) for pointing this out!

CHAPTER 10

Notable Contributors

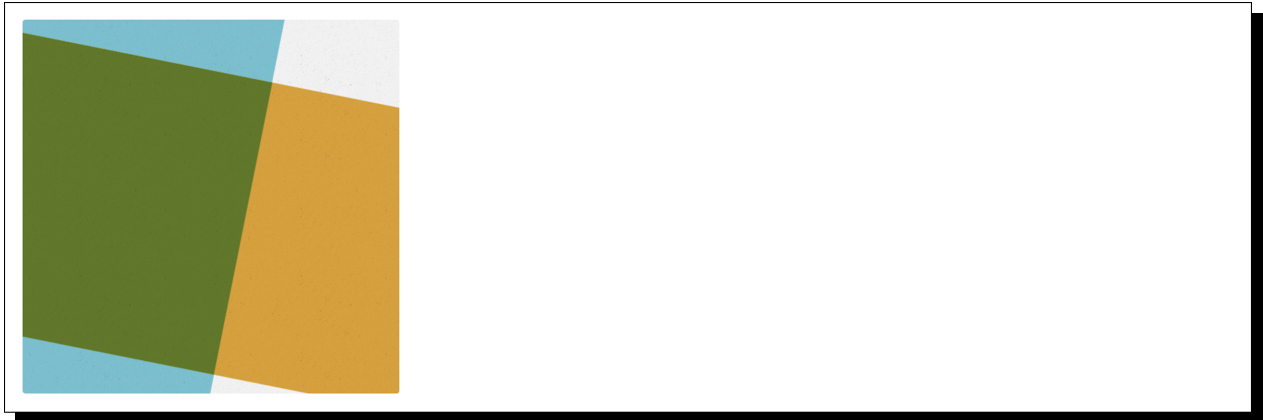
Profile Picture



10.1 ftiff

Real Name	François Levaux-Tiffreau
Employer	Amaris
Slack	@ftiff
Twitter	@ftiff
Linkedin	ftiff
Blog	https://maclovin.org

Profile Picture



10.2 mactroll

Real Name	Joel Rennich
Employer	Trusource Labs
Slack	@mactroll

Profile Picture



10.3 mosen

Real Name	Unknown
Slack	@mosen