
umidocs Documentation

Release 3.0

MIT Sustainable Design Lab

Apr 21, 2022

1	Requirements	3
1.1	Hardware	3
1.2	Software	3
2	Installation	5
2.1	Download & Install	5
3	Learn UMI	7
4	What is an UMI bundle?	9
5	Starting a project	11
5.1	Opening/Creating a project	11
6	Configuring Site Parameters	13
7	Saving a Project	15
8	Model Setup - Buildings	17
8.1	Step 1: Building the brep geometry	17
8.2	Step 2: Adding the building to the “Buildings” layer	17
8.3	Step 3: Assigning a name and a template in the “Settings” panel	19
8.4	Step 4: Assigning other simulation properties	19
9	Model Setup - Template Editor	21
9.1	The XML Template Library File	21
9.2	Opening a TLF file and navigating contents	21
9.3	Adding and modifying components in a TLF file	24
9.4	Basic content modification	24
10	Model Setup - Context	25
10.1	Streets	25
10.2	Site boundary	25
10.3	Parks	25
10.4	Shading	25
10.5	Boundary Objects	26
10.6	Water bodies	26
10.7	Irrigated land	26

11 Site Analysis Module	27
12 Energy Module Overview	29
13 Shoebox Model	33
13.1 Advanced settings under the Building tab	33
13.2 End uses	33
13.3 Accessing the Shoebox IDFs	34
14 Life Cycle Impact	35
14.1 Purpose and metrics	35
14.2 Life Cycle calculation in umi	36
15 Life Cycle - Data Inputs	37
15.1 Life Cycle data in Opaque/Glazing Materials	37
15.2 Life Cycle data in Structure Constructions	39
15.3 Life Cycle data in the Building Template	40
16 Life Cycle - Simulation and Visualization	43
16.1 1. Running a calculation	43
16.2 2. Visualizing results	43
16.3 3. Exporting results into CSV	44
17 Modeling Low Carbon Energy Systems	45
17.1 The Big Picture	45
17.2 Input Profiles	46
17.3 Energy Supply Modules	46
17.3.1 Absorption chillers	46
17.3.2 Electric chillers	47
17.3.3 Solar thermal collectors	48
17.3.4 Hot Water Storage Tanks	48
17.3.5 Electric Heat Pumps	49
17.3.6 Natural gas boilers	50
17.3.7 Photovoltaic Array	50
17.3.8 Wind Turbines	51
17.3.9 Battery Bank	52
17.3.10 Combined Heat & Power	52
17.4 References	53
18 HARVEST	55
18.1 Background	55
18.1.1 Controlled-Environment Agriculture	55
18.1.2 Modelling crop growth	56
18.2 Simulation inputs	56
18.2.1 CEA Farm templates	56
18.2.2 Urban Food Profiles (Urban foodprints)	58
18.3 CEA Farm Simulator	59
18.3.1 Marketable yield	59
18.3.2 Water Use	61
18.3.3 Energy Use	62
18.3.4 Carbon Balance	62
18.3.5 Jobs	63
18.3.6 Site premium	63
18.4 Simulation outputs	63
18.4.1 Site metrics	63

18.4.2	Key performance metrics	64
18.5	References	64
19	Design Accessibility	65
19.1	Motivation	65
19.2	How it Works	65
20	Setting Up a Rhino Model	67
20.1	Step 1: Starting a new umi project	67
20.2	Step 2: Modeling Streets, Buildings and Amenities	67
20.2.1	Streets	67
20.2.2	Buildings	67
20.2.3	Amenities	69
20.3	Step 3: Running a Simulation	69
20.4	Step 4: Results Visualization	69
21	Example	71
22	Template Library Editor	73
23	Materials Tab	75
23.1	Opaque material description	75
23.1.1	Conductivity	75
23.1.2	Cost	75
23.1.3	Density	75
23.1.4	Embodied Carbon	75
23.1.5	Embodied Energy	76
23.1.6	Substitution Rate Pattern	76
23.1.7	Substitution Timestep	76
23.1.8	Transportation Carbon	76
23.1.9	Transportation Distance	76
23.1.10	Transportation Energy	76
23.1.11	Moisture Diffusion Resistance	76
23.1.12	Roughness	76
23.1.13	Solar Absorptance	77
23.1.14	Specific Heat	77
23.1.15	Thermal Emittance	77
23.1.16	Visible Absorptance	77
23.2	Glazing material description	77
23.2.1	Conductivity	77
23.2.2	Cost	77
23.2.3	Density	77
23.2.4	Embodied Carbon	78
23.2.5	Embodied Energy	78
23.2.6	Substitution Rate Pattern	78
23.2.7	Substitution Timestep	78
23.2.8	Transportation Carbon	78
23.2.9	Transportation Distance	78
23.2.10	Transportation Energy	78
23.2.11	Dirt Factor	78
23.2.12	Back-side IR Emissivity	79
23.2.13	Front-side IR Emissivity	79
23.2.14	IR Transmittance	79
23.2.15	Back-side Solar Reflectance	79
23.2.16	Front-side Solar Reflectance	79

23.2.17	Solar Transmittance	79
23.2.18	Back-side Visible Reflectance	79
23.2.19	Front-side Visible Reflectance	79
23.2.20	Visible Transmittance	80
23.3	Opaque	80
23.4	Glazing	81
24	Constructions Tab	83
24.1	Opaque Construction Description	83
24.1.1	Opaque assembly	83
24.1.2	Window assembly	83
24.1.3	Structure assembly	83
25	Schedules Tab	85
25.1	Schedules	85
25.1.1	Day Week Year	85
26	Zone Information Tab	87
26.1	Zones	90
26.1.1	Constructions	90
26.1.2	Loads	90
26.1.3	Conditioning	90
26.1.4	Ventilation	90
26.1.5	Domestic Hot Water	90
26.1.6	Daylight Mesh Resolution	90
26.1.7	Daylight Workplane Height	90
26.1.8	Internal Mass Construction	91
26.1.9	Internal Mass Exposed Floor Area	91
26.2	Loads	91
26.2.1	People	92
26.2.2	Occupancy density	92
26.2.3	Occupancy schedule	92
26.2.4	Equipment	92
26.2.5	Equipment power density	92
26.2.6	Equipment availability schedule	92
26.2.7	Lighting	92
26.2.8	Lighting power density	92
26.2.9	Lighting availability schedule	92
26.2.10	Dimming type	92
26.2.11	Illuminance target	92
26.3	Constructions	92
26.3.1	Facade	93
26.3.2	Ground	93
26.3.3	Partition	93
26.3.4	Roof	93
26.3.5	Slab	93
26.3.6	Facade is adiabatic	93
26.3.7	Ground is adiabatic	93
26.3.8	Partition is adiabatic	93
26.3.9	Roof is adiabatic	93
26.3.10	Slab is adiabatic	93
26.4	Conditioning	94
26.4.1	Heating	94
26.4.2	Heating setpoint	94

26.4.3	Heating schedule	95
26.4.4	Heating limit type	95
26.4.5	Max heating capacity	95
26.4.6	Max heat flow	95
26.4.7	Heating CoP	95
26.4.8	Cooling	95
26.4.9	Cooling setpoint	96
26.4.10	Cooling schedule	96
26.4.11	Cooling limit type	96
26.4.12	Max cooling capacity	96
26.4.13	Max cool flow	96
26.4.14	Cooling CoP	96
26.4.15	Mechanical ventilation	97
26.4.16	Mechanical ventilation schedule	97
26.4.17	Min fresh air per area	97
26.4.18	Min fresh air per person	97
26.4.19	Economizer type	97
26.4.20	Heat recovery type	97
26.4.21	Heat recovery efficiency (latent)	98
26.4.22	Heat recovery efficiency (sensible)	98
26.5	Ventilation	98
26.5.1	Infiltration	98
26.5.2	Infiltration rate	99
26.5.3	Natural ventilation	99
26.5.4	Natural ventilation minimum outdoor air temperature	99
26.5.5	Natural ventilation maximum outdoor air temperature	99
26.5.6	Natural ventilation maximum relative humidity	99
26.5.7	Natural ventilation schedule	99
26.5.8	Natural ventilation zone temperature setpoint	100
26.5.9	Scheduled ventilation	100
26.5.10	Scheduled ventilation ACH	100
26.5.11	Scheduled ventilation schedule	100
26.5.12	Scheduled ventilation setpoint	100
26.5.13	Buoyancy	101
26.5.14	Wind	101
26.5.15	Afn	101
26.6	Domestic Hot Water	101
26.6.1	Enabled	102
26.6.2	Scheduled	102
26.6.3	Supply Temperature	102
26.6.4	Inlet Temperature	102
26.6.5	Flow rate	102
26.7	Windows	102
26.7.1	Type	103
26.7.2	Construction	103
26.7.3	Operable area	103
26.7.4	Shading is used	103
26.7.5	Shading system availability schedule	103
26.7.6	Shading system setpoint	103
26.7.7	Shading system transmittance	103
26.7.8	Shading system type	103
26.7.9	Zone mixing	103
26.7.10	Zone mixing availability schedule	103
26.7.11	Zone mixing delta temperature	103

26.7.12	Zone mixing flow rate	103
26.7.13	Virtual partition	103
26.7.14	Airflow network discharge coefficient	103
26.7.15	Airflow network temperature setpoint	103
26.7.16	Airflow network window availability	103
27	Building Templates Tab	105
27.1	Building Template components description	105
27.1.1	Core Zone Type	105
27.1.2	Perimeter Zone Type	105
27.1.3	Structure	105
27.1.4	Partition ratio	105
27.1.5	Lifespan	106
27.1.6	Windows	106
28	Indices and tables	107
	Index	109

The Urban Modeling Interface (umi) is a multi-year effort, led by the [Sustainable Design Lab](#) at MIT, to develop an urban modeling platform to evaluate the environmental performance of neighborhoods and cities with respect to operational and embodied energy use, neighborhood walkability, access to daylighting, urban food production and district-level energy supply analysis. umi is a design environment for Rhinoceros 3d (Rhino) and includes an application programming interface (API) for researchers and consultants interested in adding additional performance modules and metrics. Focus users are urban designers and planners, municipalities, utilities, sustainability consultants and other urban stakeholders. umi files can be generated from scratch in Rhino or via the [UBEM.io](#) web app. UBE.io also supports the results comparison of multiple umi files.

CHAPTER 1

Requirements

UMI is a plugin for Rhinoceros 3D NURBS modeler. To use UMI, you need the following software and hardware:

1.1 Hardware

A computer running the **Windows operating system**. UMI does not currently run on the Mac operating system.

1.2 Software

The latest version of Rhino 7. (UMI does not work with Rhino 6.) A free, fully functional 90 day trial is available from the McNeel web site.

CHAPTER 2

Installation

2.1 Download & Install

To download UMI, go to the [project web site](#), download the installer and run it. This [video tutorial](#) walks you through the process of downloading UMI and starting your first project.

CHAPTER 3

Learn UMI

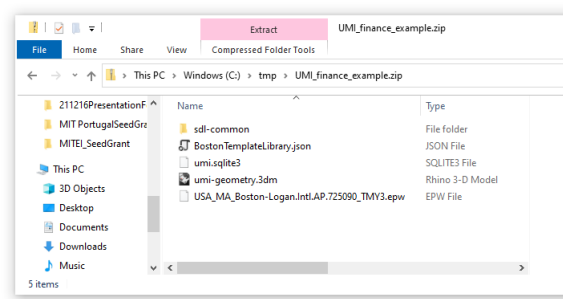
To get started learning UMI, it is recommended that you follow the video tutorials on the [Sustainable Design YouTube channel](#). You can download the UMI project files used in the tutorials below.

CHAPTER 4

What is an UMI bundle?

UMI stores all project information in a single file called an UMI bundle. The file has the extension FILE.UMI and has the format of a Microsoft Windows ZIP archive file. When you open an UMI bundle, the project content is extracted into a temporary directory on your computer. While you are working in UMI, files in that directory get updated and/or created. When an UMI project is saved, the directory content is saved back into the UMI bundle.

To access the content of an UMI bundle, rename the file extension to FILE.ZIP and open the file. A typical bundle content is shown below.



The main directory contains the Rhino geometry file (.3dm), the climate file (.epw) and the template library (.json)> Under sdl-common other, project-specific files may be stored that belong to individual modules.

Starting a project

To start a new project, open Rhino and either type “UMI” on the command prompt or left-click on the UMI icon in the UMI toolbar.

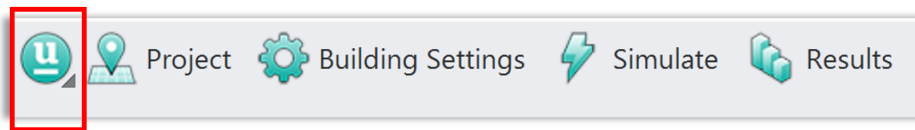


Fig. 5.1: The umi toolbar

To run UMI properly, it is key that the **working units of your Rhino file are in meters**. To change them, in Rhino, go to > File — Properties — Units — Model Units : Change to “meters”.

5.1 Opening/Creating a project

When working with UMI projects, it is important to use the umi functions and **NOT** the Rhino commands for “Opening” and “Saving” a project. Umi creates it’s own file system (*.umi) which is a package containing all relevant files and data needed for a project.

To create a new project, simply click on the UMI button and select “open project” or “new project” and browse to the folder location of your choice. Once a project has been opened.

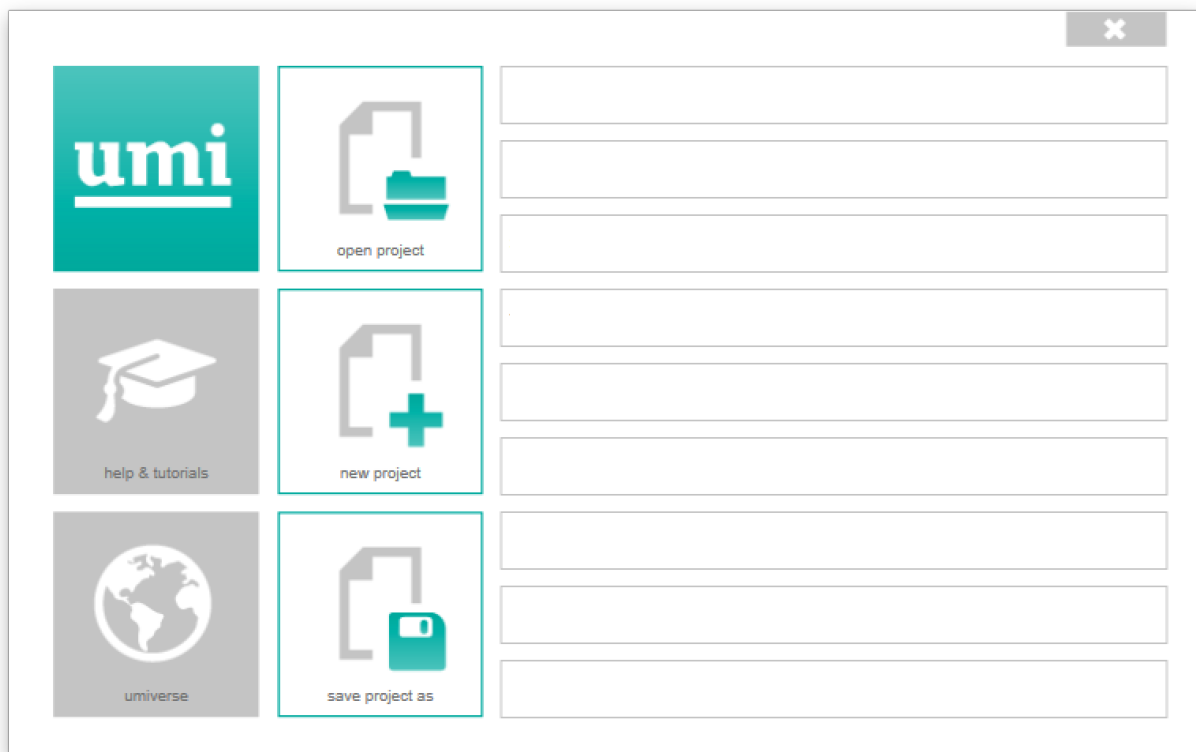
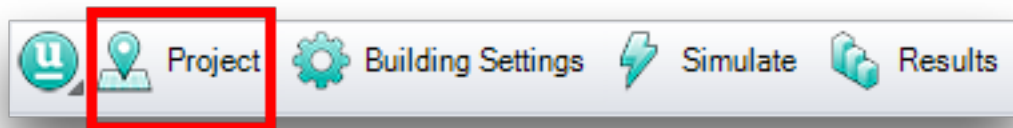


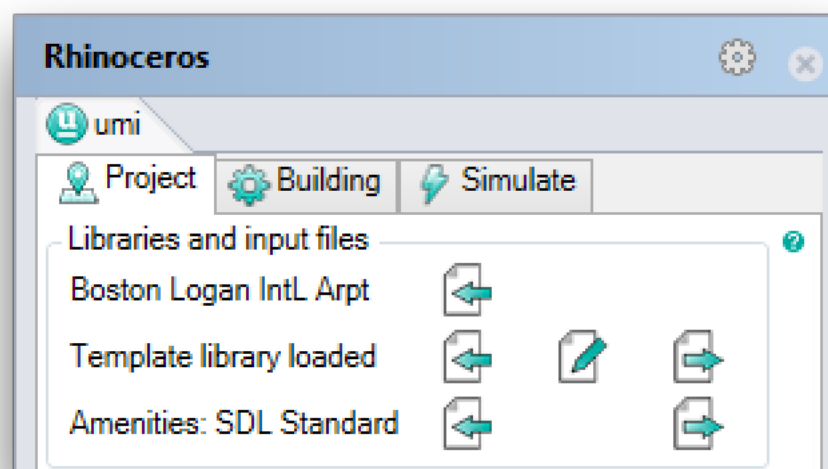
Fig. 5.2: The umi menu

Configuring Site Parameters

To configuring your project's parameters, click the “Project” button in the umi toolbar:

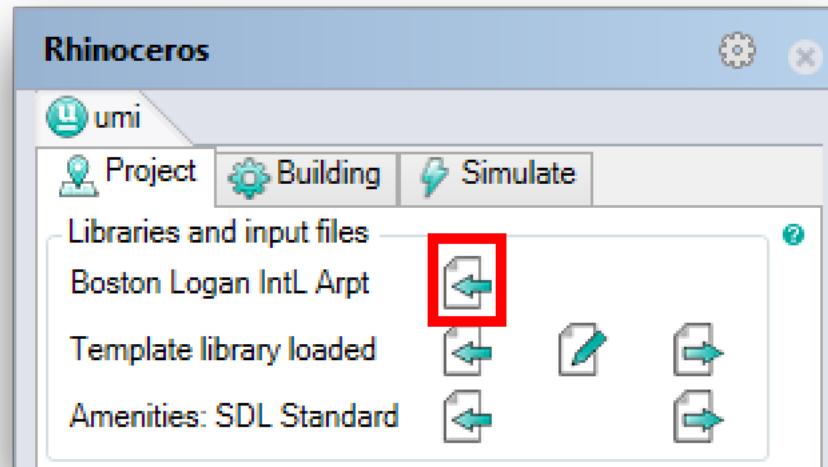


The umi panel opens, with the “Project” tab active:



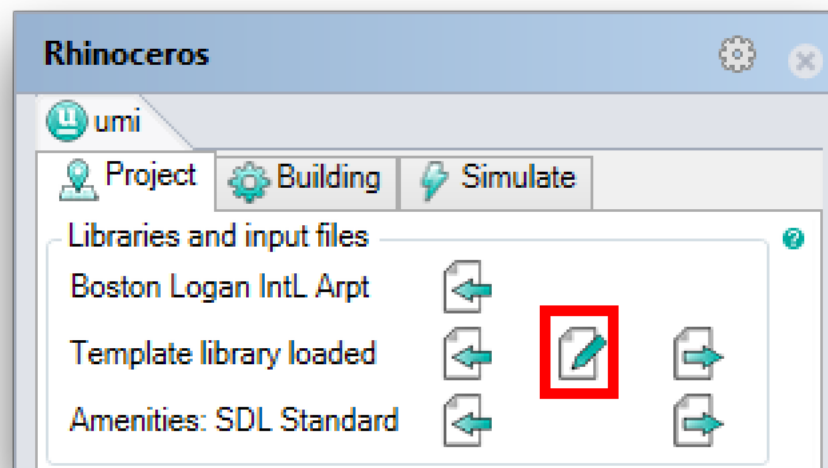
Note that new projects use the Boston Logan Airport weather file, a default template library, and the default amenities profile. Within umi, blue text indicates default values.

To select a new weather file, click the “Import” button:



Navigate to and choose your desired [EnergyPlus](#) weather (.epw) file. Notice how the location text is not blue after a new file has been chosen.

To customize your building templates, click the “Edit” button:



The [template library editor](#) will open. Make any changes you desire, and remember to save! Notice how the template library text is not blue after changes are made. Whole template libraries can also be imported into and exported from umi projects. Watch out - existing changes will be overwritten when this happens!

The third setting allows you to provide a custom “amenities profile” for mobility calculations. The default profile is usually sufficient, but to learn about providing a custom profile, see [Design Accessibility](#).

CHAPTER 7

Saving a Project

All umi project geometry, settings, and simulation results are stored in a single .umi file called an umi bundle. The location of the bundle is specified when you create a new project, and whenever you save your Rhino document, this bundle is re-exported automatically in the background. The bundle includes the project's Rhino scene file, the epw weather file, building modeling templates as well as all simulation results in an SQLite data base, so you don't need to include those separately if you transfer the bundle to a different computer.

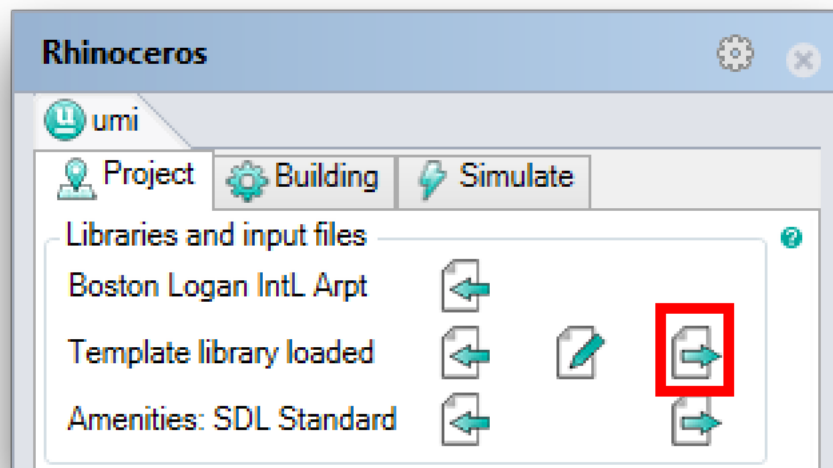
Note: Please note that an .umi file is just a compressed Windows.zip file, meaning that you can access all data related to your project directly. The purpose of the bundle is to streamline your workflow and to share and archive project data.

If you wish to change the location of the current umi bundle, use the UmiBundleSaveAs Rhino command. There is no toolbar button to invoke this command - you have to type it manually into the Rhino command window.

To export a copy of the current umi bundle without making it the “working” copy, use the UmiBundleSaveCopy Rhino command. Like the UmiBundleSaveAs command, there is no toolbar button for this command, and you will have to type it in yourself.

To export a project's building template library, use the “Export” button of the umi site settings tab:

To export a project's geometry, use the standard Rhino SaveAs command (this is the command invoked by selecting File > Save As... from the Rhino menubar). **The project's working Rhino document will change, and standard geometry saves will now modify this new version.**



Model Setup - Buildings

Buildings are one of the key elements of an UMI project, used by most modules. In UMI, buildings are represented as building massings, i.e. outer envelopes including facades, roofs and external floors. In Rhino, a building is represented by a single volume modeled as a “boundary representation” or “brep”. A brep in Rhino can be generated by a variety of means, such as the extrusion of polylines and curves, or the repeated application of Boolean operations (such as union or intersection). If a building contains multiple occupied volumes, these should all be part of a single brep. However, additional exterior components (like shading devices) should not be modeled as part of the building - these objects should be placed on separate [context layers](#). For a brep to be an acceptable building massing, it has to fulfill the following conditions:

- The brep needs to be “airtight”.
- The brep’s surfaces must all be planar.

As long as the above conditions are fulfilled, the brep’s facade surfaces can have any orientation. “North” is always the direction of the y-axis.

8.1 Step 1: Building the brep geometry

One of your first tasks when starting a new umi model will probably be constructing its buildings. In this example, a nontrivial building with two volumes is generated by creating each volume independently and then “joining” them into a single brep.

8.2 Step 2: Adding the building to the “Buildings” layer

When umi starts a new project for you, it creates an “umi” Rhino layer, with sublayers corresponding to various objects that umi uses. One of these sublayers is the “Buildings” layer, and this is the layer on which all building breps must be placed in order for umi to “see” them as building objects.

You can create any sublayer structure within the Buildings layer that you want - umi will “see” buildings on any sublayers that are visible when you run a simulation. This is an essential way to keep large projects organized.

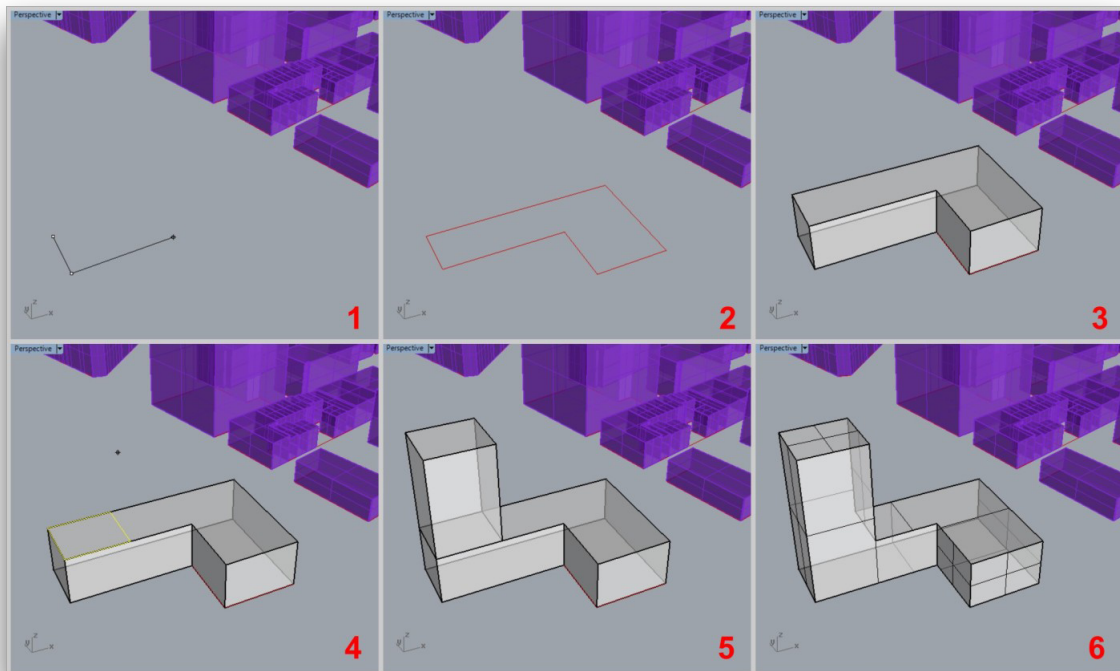


Fig. 8.1: Steps to create a building volume

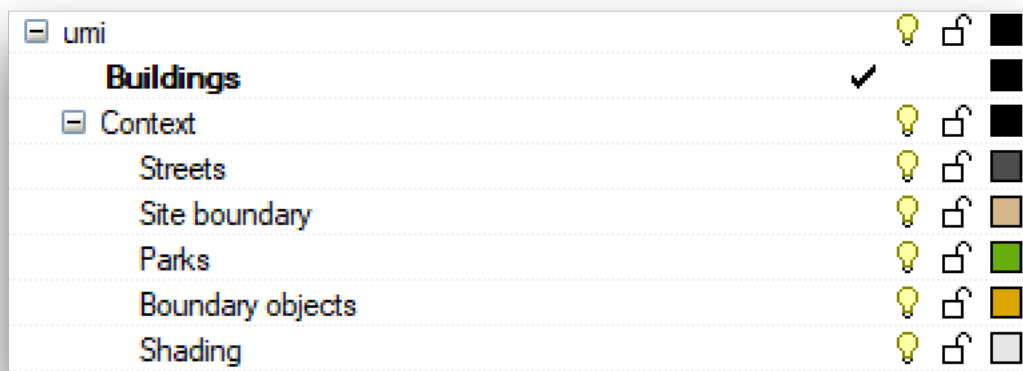
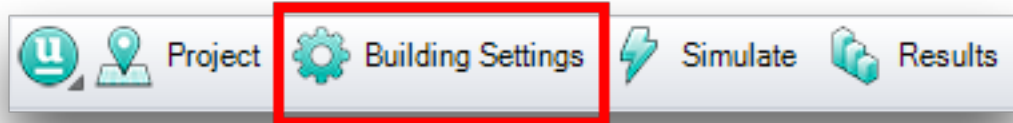


Fig. 8.2: Some of the layers created when an umi project is started

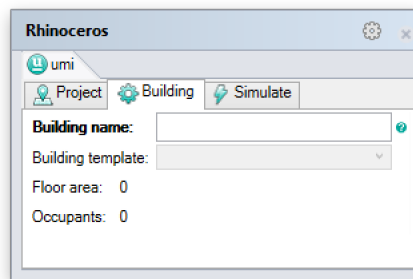
When you assign building settings to an object (see next section), umi will automatically move it to the Buildings layer for you if you forgot, but it's best to do it yourself so you don't lose track of any buildings.

8.3 Step 3: Assigning a name and a template in the “Settings” panel

After creating a building's geometry and adding it to the Buildings layer, its properties must be specified. This is done using the Building Settings Panel, which can be opened by clicking on the “Building Settings” button of the umi toolbar or through the command “UmiOpenBuildingSettings”.



The umi panel will open with the “Building” tab active.



The “Building name” field contains the user-specified name for the umi building. This is the same as the Rhino object name; changing one will change the other. Umi offers an “UmiMultiname” Rhino command that can be used to automatically assign numbered names to a collection of buildings all at once.

The “Building template” field allows you to select the simulation template to apply to this building. The options are drawn from the currently-loaded building template library, which can be modified in the “Project” tab of the umi panel. (See “Configuring site parameters” in the User Guide.)

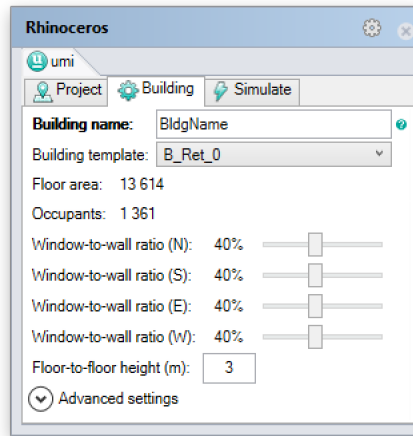
You can assign a template to multiple buildings at once by simply selecting all of them before making your selection from the combobox.

8.4 Step 4: Assigning other simulation properties

Once a template is assigned to a particular building, additional settings are configurable.

The building's window-to-wall ratio (WWR) represents the percentage of the building's façade area that is glazed. Umi allows the specification of a different WWR value for each façade orientation. (If your building is not perfectly compass-aligned, umi will use the closest compass direction for each façade surface.)

The building's floor-to-floor height is the height between each story's floor and the floor of the story above it (umi assumes uniform story height). If the building's height is not evenly divisible by the provided value, various simulation modules will perform differently; refer to the individual documentation for each simulation module to learn what will happen.



Note: The advanced settings section includes a series of modeling parameters intended for advanced and experimental use of the energy module. Parameters are detailed in section [Shoebox Model](#). The default values for these fields are sufficient for general use.

Model Setup - Template Editor

The Template Library Editor is an independent application provided with umi for the creation, management and edition of XML Template Library Files (TLF). TLF files are the open format used by umi to exchange and store information about materials, constructions, schedules, thermal loads, spaces and buildings. This section explains the basic characteristics of the TLF and the basic controls of the editor.

9.1 The XML Template Library File

The Template Library File (TLF) is an XML type file with a specific structure in which all building and space properties, both thermal and environmental, are stored for multiple building types. It includes both a library of building definitions, and libraries of all their data dependencies.

Within the file, these categories are listed as XML objects, grouped by the previously named types, and can be created and edited both through the use of the template editor, and directly in any text edition software (See Figure below for a diagram of the data structure). To know more about the TLF file format and its importance in building performance simulation in design you can access the academic paper *“Towards standardized building properties template files for early design energy model generation”*, accessible in the following [link](#).

9.2 Opening a TLF file and navigating contents

You can open the Template Library Editor, from the “Project” umi panel by clicking the “Edit” button. The application will pop up in a separate window, and immediately open the TLF file currently loaded in your umi file. If you did not change the original file, you will see the default library file opened.

Additional file management commands are accessible from the “File” menu at the top left. You can open a different TLF by clicking “Open”, and finding the file in the browser window. You can as well save the file with a different name through “Save as”. Finally you can “Save” the file under its current name. Note that all changes you make on the library will be lost if you do not save the file before closing the editor. If the file you modify is the same one you have loaded in umi, changes will be immediately applied to your file, but if you rename the file remember to load it in umi.

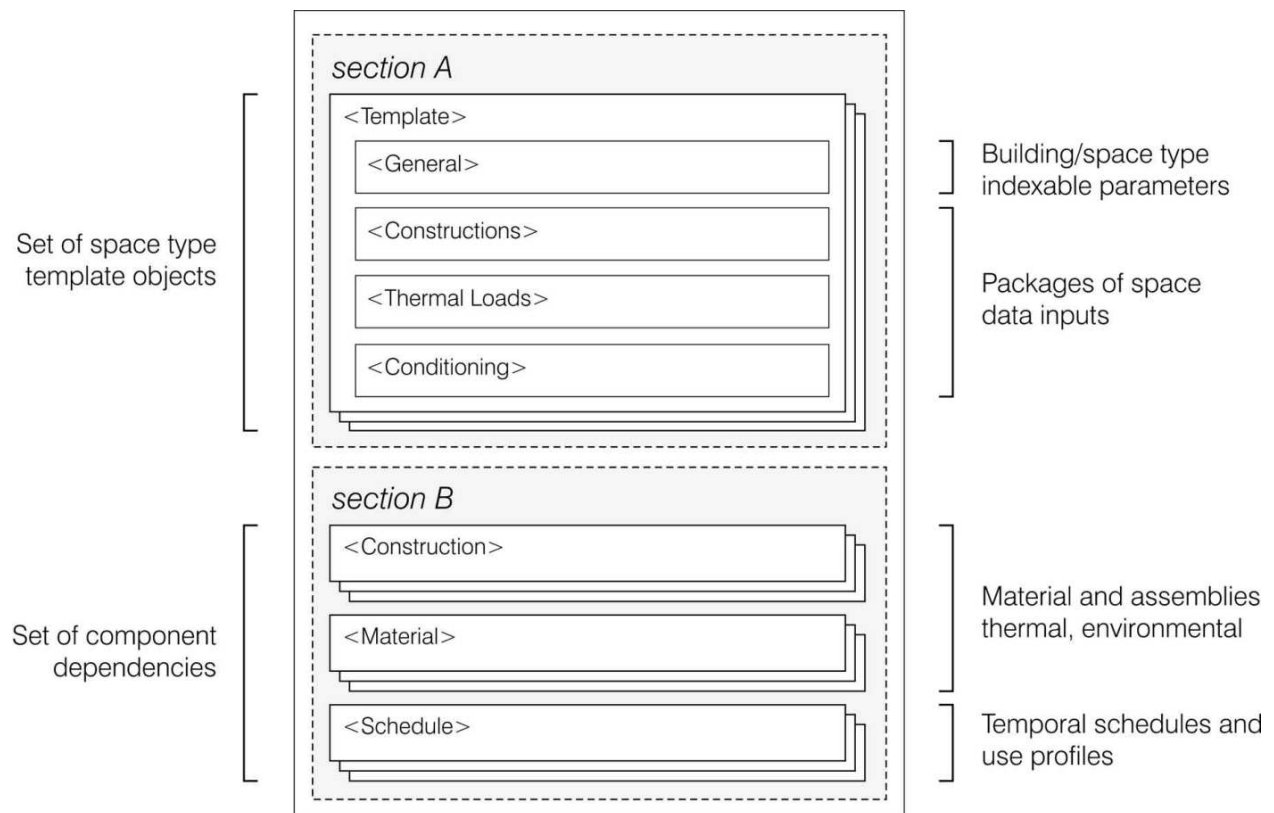


Fig. 9.1: The template library file structure

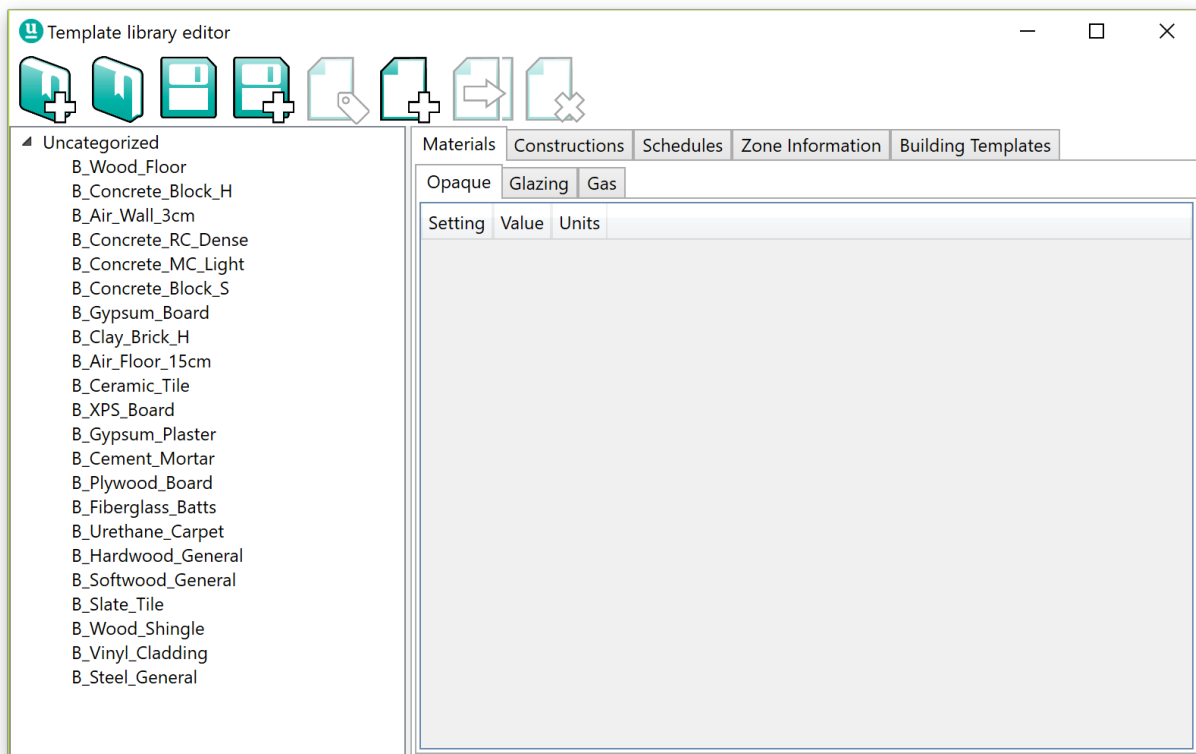


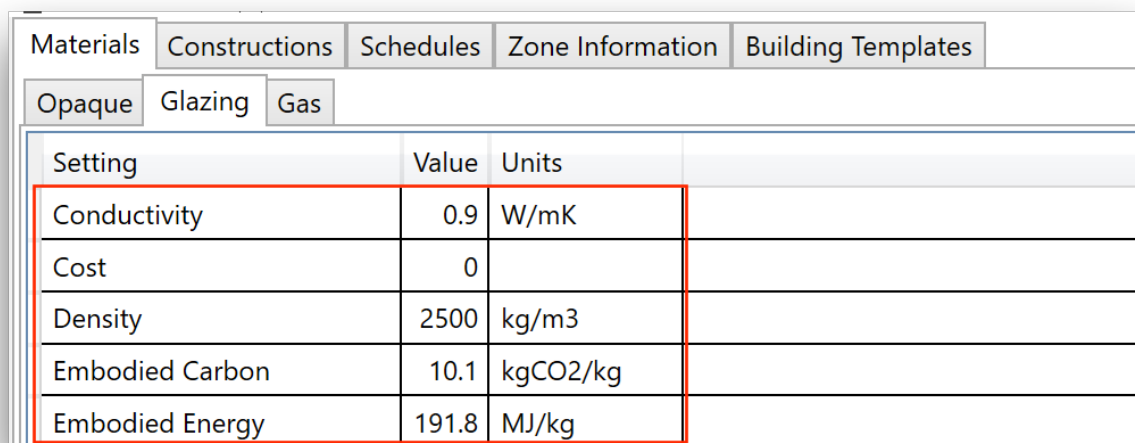
Fig. 9.2: Template Editor Main Window

9.3 Adding and modifying components in a TLF file

Todo: this section needs to be drafted

9.4 Basic content modification

Each component data type in a library file has different data fields accessible within the Template Editor, used in different modules of umi. This section provides general directions about how to manipulate these fields. However, in order to know more about the specific meaning and interpretation of the fields, you can visit the “Embodied Energy” and “Operational Energy” sections of this user guide.



Materials				
Constructions				
Schedules				
Zone Information				
Building Templates				
Opaque				
Glazing				
Gas				
Setting	Value	Units		
Conductivity	0.9	W/mK		
Cost	0			
Density	2500	kg/m3		
Embodied Carbon	10.1	kgCO2/kg		
Embodied Energy	191.8	MJ/kg		

Fig. 9.3: You can add a new component to the table by clicking the “Add Component” button

In addition to the Rhino layer for buildings, a new umi project has a variety of other context layers for other objects relevant to various aspects of urban simulation. Each of these is a sublayer of the “Context” layer, which is in turn a sublayer of the “umi” layer, and is explained below.

10.1 Streets

The umi mobility analysis module relies upon the existence of a suitable street network for the site. This network should exist on the Rhino “Streets” layer. For details on setting it up, refer to the relevant section of the user guide.

10.2 Site boundary

The “Site boundary” layer contains closed polylines that mark the boundaries of the site. The total area enclosed by these polylines is used to calculate the site Floor Area Ratio (FAR). Please note that the site area should not include streets and public sidewalks. See the Site Analysis Module for details.

10.3 Parks

Objects on the “Parks” layer can be used in mobility calculations. For details, see the relevant User Guide section.

10.4 Shading

Objects on these layers are used for operational energy and daylight simulations. Objects on the “Shading” layer are used to calculate shadows cast on simulated buildings. This is used for shading objects that do not touch the buildings to be analyzed.

10.5 Boundary Objects

Boundary objects are similar to the shading objects. They are used for contextual shading. However, on these objects an adjacency test is performed in order to detect adjacencies and adiabatic surfaces. Boundary objects have to be closed breps.

10.6 Water bodies

This layer consists of surfaces that correspond to outdoor bodies of water such as rivers and swimming pools. This layer is currently only used by an experimental water use module.

10.7 Irrigated land

This layer consists of surfaces that correspond to land surfaces on site that are actively irrigated. This layer is currently only used by an experimental water use module.

CHAPTER 11

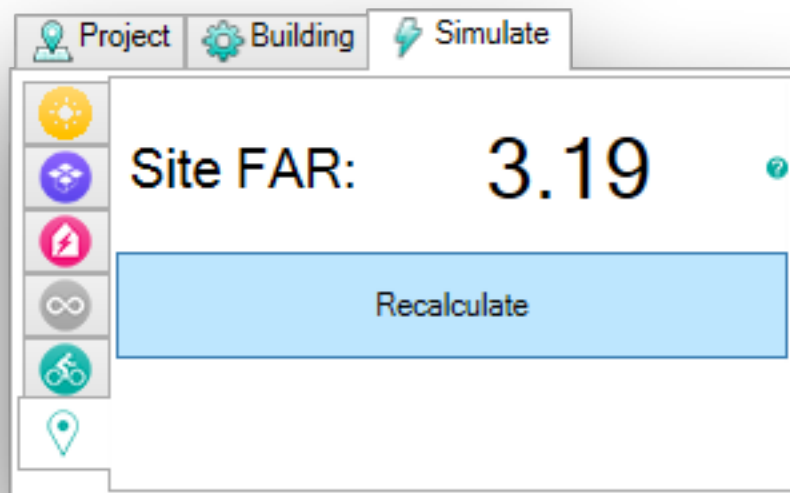
Site Analysis Module

Umi can calculate a site's Floor Area Ratio (FAR), which is simply the ratio of the total gross floor area of each building on the site to the area the site itself occupies.

In order to perform an FAR calculation, two criteria must be satisfied. First, a floor-to-floor height for every building on the Buildings layer must be set, which requires that each has a building template assigned, as well. See Model Setup - Buildings for details. Second, a ground surface must exist on the "Ground" layer. This must be a flat, closed surface. Multiple ground surfaces can be defined; their area will simply be added together.

The FAR calculation can be executed from with the umi panel's Simulate tab. It is located on the first simulation sub-panel. The "Recalculate" button will perform the calculation and display the result. The button simply executes the "UmiCalculateFAR" Rhino command, which can also be directly invoked.

FAR results are never saved within the umi bundle, and must be recalculated (if desired) every time a project is reloaded.



Energy Module Overview

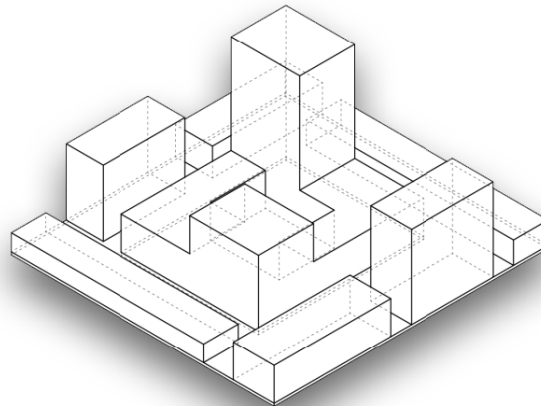


Fig. 12.1: Input Geometry

The operational energy model simulation uses your umi buildings and building template settings as well as the shading geometry on the umi shading layers. A small input geometry example is shown in [Fig. 12.1](#).

First your building envelope is subdivided into floor volumes according to your floor to floor height settings in the building template. Along the facades of each floor volume a solar insolation analysis is performed using Radiance / GenCumulativeSky. Internally your geometry is meshed and then handed over to radiance. [Fig. 12.2](#) shows a typical result of this insolation simulation.

This radiation data as well as the basic facade surface orientation are then used to cluster facade regions of each building by solar micro climate similarity - see [Fig. 12.3](#) for an example. Each color represents a cluster. The number of clusters is a user setting and can be specified for each orientation (a typical cluster count per facade is two).

The Shoeboxer then assigns an area weight to each cluster centroid. This centroid is then also the location for a shoebox model that then represent the cluster. See [Fig. 12.4](#). Each Shoebox or Cluster is written out as IDF file and

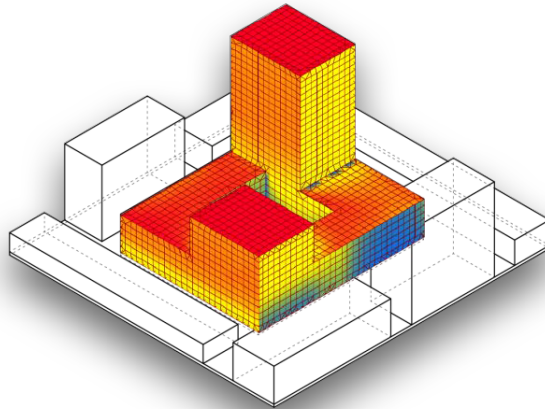


Fig. 12.2: Insolation Analysis Mesh [high(red) low(blue)]

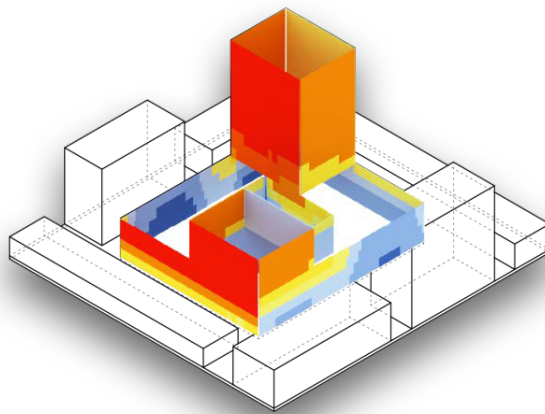


Fig. 12.3: Clustering



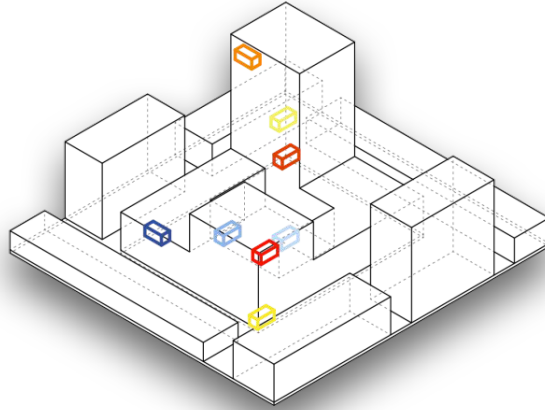


Fig. 12.4: Shoebox clusters

is simulated with EnergyPlus. The final simulation step is to gather all shoebox data and aggregate the building result. For further details regarding the method please refer to the [reference paper](#).

The Shoebox model is based on the EnergyPlus “ZoneHVAC:IdealLoadsAirSystem” component. It models a core zone and a perimeter zone. Mechanical Ventilation and Natural Ventilation are modelled using the “DesignSpecification:OutdoorAir” and the “ZoneVentilation:WindandStackOpenArea” components.

13.1 Advanced settings under the Building tab

These settings adjust the parameters for the shoebox model used for the energy simulations.

Variable	Default Value	Explanation
Core depth (m)	3	The depth of the shoebox core zone.
Room width (m)	3	The width of the shoebox.
Perimeter offset (m)	3	The depth of the shoebox perimeter zone.
envr	0.1	The external sensor spacing for the annual solar radiation incidence analysis that determines shoebox location.
fdist	0.01	The internal sensor spacing for the annual solar radiation incidence analysis that determines shoebox location.

Larger values of envr and fdist reduce accuracy but speed up simulations, especially with large numbers of buildings. Radiation sensor generation and analysis tends to be the biggest bottleneck in running large models. However, modifying fdist and envr is not recommended.

13.2 End uses

End uses are reported using EnergyPlus Meters for each shoebox and multiplied by a weighting factor. A mapping of the EnergyPlus meters to (=>) the UMI Results name are shown in the following table.

EnergyPlus Variable	UMI Output
Zone Lights Electric Energy	SDL/Lighting
Zone Electric Equipment Electric Energy	SDL/Equipment
Zone Ideal Loads Supply Air Total Heating Energy	SDL/Heating
Zone Ideal Loads Supply Air Total Cooling Energy	SDL/Cooling
Water Use Equipment Heating Energy	SDL/Domestic Hot Water
Zone Windows Total Transmitted Solar Radiation Energy	SDL/Window Radiation

13.3 Accessing the Shoebox IDFs

If you want to access the idfs created for each shoebox, go to `c/umi/temp/energy` after simulation. Under two filename subdirectories, open the `eplus` folder. From there you will find “group#” folders, with as many groups as there are templates. Each group has a number of sample folders under it. The samples are based on the number of shoeboxes required by the radiation mapping. You can navigate to an individual sample and open up the `.idf` file from there and simulate in the standard EP-launch. If you want to process the resulting data, you can use the command “`UmiExportShoeboxWeights`” in the Rhino command line. This command creates a `.json` file that maps each shoebox file back to the original model. The weights can be used to extrapolate the individual idf results out to the full model results if repeated across all samples and groups.

Umi 3.0 introduces the first version of its Life Cycle (LC) module, which currently allows for the calculation of basic embodied environmental impacts associated with construction materials, such as *Embodied Energy* and *Embodied Carbon*. The purpose of this introductory section is to identify the available metrics and calculations in the current version.

14.1 Purpose and metrics

Given the contribution of the built environment to GHG emissions and fossil fuel consumption, the search for sustainability in its design mostly focus on the energy impacts of buildings happening due to their operation. However a holistic look to the energy and emissions impacts of buildings and cities needs to take into account those impacts happening in other phases of the life cycle of buildings such as, production, transport, maintenance and disposal of construction materials. These impacts also caused by the production of the urban built environment, although typically smaller than those coming from operation fuel consumption in the building lifetime, become more relevant in the design of high efficiency or net zero urban developments.

Typically these fuel and emission impacts associated with materials are added up in each life cycle phase through Life Cycle Assessment (LCA) methodologies to generate so called “embodied environmental impacts” of a building lifetime. In the current version of umi two embodied metrics are available:

- **Embodied Energy (EE):** It represents all fuel consumption (Typically from non-renewable sources) which happened through the lifetime of a product (or building), expressed as primary energy (kWh or MJ). The equivalent impact category in an impact assessment method such as **TRACI** (US EPA) would be Fossil Fuel Depletion. In umi, building results are expressed as kWh of primary energy.
- **Embodied Carbon (EC):** In a parallel manner to EE, it represents the GHG emissions through the lifetime of the product (or building). The term “embodied carbon” sometimes is used referring exclusively to CO₂ emissions and measured in kgCO₂, ignoring the effect of other greenhouse gases. In other cases it is used to referring to CO₂ emissions equivalent and measured in kgCO₂eq, being then an equivalent to the impact category of Global Warming Potential (GWP) in a method such as **TRACI**. In umi, building results are expressed as kgCO₂ only. However the results units depend only on the units of the properties introduced in the Template File Editor. If you prefer to use kgCO₂eq introduce such values when defining materials and constructions.

14.2 Life Cycle calculation in umi

The Life Cycle module in umi takes as inputs EE/EC data about materials and building massing, and performs a simplified Life Cycle Inventory calculation providing yearly results for both metrics, for the selected lifetime of the building. Note that it is not a complete LCA tool, such as other commercial more complex software suits focused on LCA modeling for products and materials, and it does not include a validated dataset for environmental properties of building components. The umi Life Cycle module focuses on the accounting of materials and geometrical components in a building, generating an approximate “Bill of materials” and allowing for the calculation and visualization of multiple buildings at a time. To know more about the methodology you can find [here](#) the conference paper from Building Simulation 2013 in which it was presented.

Depending of the boundaries considered in an LCA, EE and EC can be expressed as Cradle-to-Gate (Only considering production and manufacturing processes), Cradle-to-Site (Also including transportation to the site of use) and as Cradle-to-Grave (Including also use and disposal phases). In umi the three approaches are possible through the use of the following template data inputs:

- Production EE/EC by kg of material
- Transport EE/EC and average distances by kg of material
- Assembly EE/EC by m²; of construction
- Replacement/maintenance rate and yearly schedule
- Disassembly EE/EC by m² of construction

In the calculation umi will use the amount of surfaces for each envelope assembly and estimate amount of interior elements such as floors, structure and partitions to generate results only for the lifecycle of materials. In future versions the Life Cycle module will allow for the automatic inclusion of operational primary energy and carbon in the use phase into the calculations. If you want to do a complete life cycle impacts calculation using the current version, you will have to take yearly results in energy consumption from the Operational Energy module and add them by year to the embodied impacts results. Note that in that case the energy load results generated by the Operational Energy module will have to be converted into primary energy or carbon emissions using the appropriate conversion factors for each fuel type.

Life Cycle - Data Inputs

Embodied energy and carbon calculations in umi are based on a set of environmental parameters defined in the Template Library File (TLF). The TLF does not only include life cycle data inputs, but many others used in different modules within umi. This user guide only focuses on describing in detail those data inputs required for the Life Cycle module, within Material, Construction, Structure and Building definitions. To know more about the TLF and its management through the Template File Editor you can go to the [Model Setup - Template Editor](#) section of this user guide. In order to learn about the definition of thermal properties you can go to the [Energy Module Overview](#) section of the user guide.

15.1 Life Cycle data in Opaque/Glazing Materials

All life cycle related inputs within Material components are located in the “Environmental” section. They characterize, for each opaque or glazing entry, the Production, Transport and Maintenance life cycle impacts in terms of Embodied Energy and Carbon.

The first section (1) has two fields: “Embodied Carbon” and “Embodied Energy”. These refer to the impacts in production and manufacture of a kg of the material in question, measured in a Cradle-to-Gate manner. The units selected are the most typical ones in existing databases: MJ/kg for primary energy and kgCO₂/kg for carbon. A common and validated reference for these values is the [Inventory of Carbon and Energy \(ICE\)](#) developed by the university of Bath.

The second section (2) has also two fields and is used to define replacement rates for materials during the lifespan of the building. “Substitution Step” is defined as the duration in years of a period of replacement (e.g. There will be interventions in this material type every 10 years). “Substitution Rate” is a ratio from 0 to 1 which defines the amount of the material replaced at the end of each period of replacement (e.g. Every 10 years this cladding will be completely replaced with ratio 1). Notice that you can define different replacement ratios for different consecutive periods, introducing them separated by commas. For example, if you introduce the series “0.1 , 0.1 , 1” after the first 10 years a 10% will be replaced, then after 20 years another 10%, then after 30 years a 100%, and finally the series would start again in year 40.

The third section (3) is used to define the transport impacts through three inputs. “Transport Distance” refers to the average distance in km from the manufacturing site to the building construction site. “Embodied Energy/Carbon” refer

Zone Information		Building Templates	
Materials		Constructions	Schedules
Opaque		Glazing	Gas
Setting	Value	Units	
Conductivity	1.25	W/mK	
Cost	0		
Density	880	kg/m3	
Embodied Carbon	0.08	kgCO2/kg	1
Embodied Energy	0.71	MJ/kg	
Substitution Rate Pattern	0.2		2
Substitution Timestep	50		
Transportation Carbon	0.067	kgCO2/kg/km	3
Transportation Distance	500	km	
Transportation Energy	0.94	MJ/kg/km	
Moisture Diffusion Resistance	50		
Roughness	Rough		
Solar Absorptance	0.7		
Specific Heat	840	J/kgK	
Thermal Emittance	0.9		
Visible Absorptance	0.7		

the impacts associated with the transport by km of distance and ton of material. These values are typically defined by vehicle (Truck, Train, Boat, etc.) and size and can be found in fuel efficiency publications.

15.2 Life Cycle data in Structure Constructions

The “Structure” component under constructions is an special type of construction not associated to any particular geometry component in a building, but the complete structural material system defined by m² of floor area. It is exclusively used in life cycle calculations and is defined in three main sections: “Typology information”, “Materials” and “Environmental”. The first (1) includes data only to be used for structures classification matters in this version and has no implication in calculations.

The screenshot shows a software interface with a sidebar on the left containing 'Zone Information', 'Building Templates', 'Materials', 'Constructions', and 'Schedules'. The 'Constructions' section is active, and the 'Structure' tab is selected. Two red-bordered boxes highlight specific areas:

Box 1: Materials

Material	Normal Ratio (kg/m2)	High Load Ratio (kg/m2)
L_Concrete_RC_Dense	330	330

Box 2: Assembly Properties

Setting	Value	Units
Assembly Carbon	0	kgCO2/m2
Assembly Energy	0	MJ/m2
Disassembly Carbon	0	kgCO2/m2
Disassembly Energy	0	MJ/m2
Cost	0	\$/m3

The second (2) allows for the definition of the different materials within the structure type (e.g. Concrete and Steel in a reinforced concrete structure). You can add a new material by clicking in the first empty Material cell and selecting

form the list. Then define the amount of that material per m^2 typically present in that type of structure (Normal Ratio). In future versions of umi you will be able to define high load ratio for structures exposed to seismic actions or high winds.

Finally the “Environmental” section has equivalent fields to those in other construction components and can be filled following the directions given in the previous point.

15.3 Life Cycle data in the Building Template

The building template component includes two types of inputs used by the life cycle calculations in umi, but in some cases also shared by other simulation modules. The first is the *Lifespan* parameter, defined as an integer number that represents the number of years a building is supposed to last, and the maximum number of year the module will produce results for. The second one is the “Partition Ratio” parameter, as an additional input exclusively used by the life cycle module, which refers to the number of lineal meters of partitions (Floor to ceiling) presenting in average in the building floor plans by m^2 .

The other area of inputs is used to select the constructions to be assigned to all components of the building (Core, perimeter and structure), which can be set by clicking in the grey boxes and choosing from the list of available components.

Materials		Constructions		Schedules	
Zone Information		Building Templates			
Setting	Value	Units			
Core zone type	L_Off_0 ▾				
Perimeter zone type	L_Off_0 ▾				
Structure	L_Off_Str_0 ▾				
Partition ratio	0.35			1	
Lifespan	60	years			
Windows	L_Off_0 windows ▾				

Life Cycle - Simulation and Visualization

Once all modeled buildings have templates assigned, Life Cycle simulation for Embodied Energy and Carbon are launched and visualized through the “Simulate” tab in the umi panel, which can be opened by clicking on the “Simulate” button of the umi toolbar, or the command “UmiOpenSimulatePanel”.

The umi panel will open with the “Simulate” tab open. In order to access the Life Cycle module controls you can click its logo in the side tabs:

16.1 1. Running a calculation

The Life Cycle umi module offers two modes for running calculations: Either running all possible models in the Buildings layer or only running those specifically selected. You can run a calculation by clicking the “Run” button located in the first section of the panel. When no building objects are selected in the Rhino viewport the button will show the text “Run all” and will trigger the first mode. You can run only specific buildings by selecting them in Rhino. In that case the button will change its text into “Run selected” triggering the second mode. The progress bar in the panel will show the evolution of the calculation which will take from seconds in the case of 1 building to minutes in the case of more than 100.

16.2 2. Visualizing results

Once one or more buildings have been calculated, umi allows for the visualization of results directly on the model by false coloring their volumes according to their performance, through second half of the “Simulate” panel. In visualization mode umi will duplicate brep geometry into the “Results” layer. Again, the module offers two modes of visualization (All buildings or selected buildings) controlled through the “False color” button in the second section of the panel. Note that in order for the visualization to work the “Buildings” layer will have to be active.

The type of results visualized can be modified through the controls in the umi panel, in order to change the metric, the component, the normalization and the year of the building lifetime. You can choose between Embodied Energy or Embodied Carbon results by clicking in the corresponding logo in the top of the “Results” section (1).

You can modify the result type (Between results for the complete building or only envelope), the normalization (Total results or normalized by floor area) and the year to visualize (Results are given as a cumulative value taking into account replacement cycles). To do so, choose the desired type using the dropdown and text boxes in the control (2). Whenever you make a change, the false color will automatically re-render.

The umi “Simulate” panel also incorporates a color scale which will automatically show the min and max of the visualization (3) as well as an info text (4) that will show the specific value associated with selected buildings. The color bar limits can be modified to suit the color range to the needs of the user just by typing in new limits. In order to keep the new limits fixed for a new false color you can block them by clicking the “Lock” icons located besides. The info text located on top of the color bar will show one value if one building is selected, and the addition of all selected if it is a multiple selection.

16.3 3. Exporting results into CSV

Within the results visualization controls in the “Simulate” panel in umi it is possible to directly export results in a comma separated value (CSV) format which can later be easily manipulated as a spreadsheet in Excel or similar software. To do so you can click the ‘Export’ button in the bottom of the panel which again offers “AllBuildings” and “SelectedBuildings” modes. Then a new file called “Results” will be created in your desktop. This file will only contain results for the metric, unit, normalization, etc. currently selected in the controls.

Modeling Low Carbon Energy Systems

Authorship

The district energy plugin enables the simulation of city-scale energy demand at the plant level. It is developed by [Samuel Letellier-Duchesne](#) (Polytechnique Montréal) and [Shreshth Nagpal](#) (MIT). The following sections present an overview of the modelling assumptions and mathematical description of each energy sub-module.

17.1 The Big Picture

A district level thermal energy plant comprises several equipment that serve the distribution network for a project's hot water, chilled water and electricity requirements by converting grid purchased utilities into usable thermal and electrical energy. The plant inputs, usually a combination of grid electricity and natural gas, can vary considerably based on the selection, capacity and efficiency of various plant equipment. The thermal plant should be configured carefully after considering the load balance between project electricity and thermal energy requirements, and the relative emissions and costs associated with grid electricity and natural gas.

The model is defined as a cascade of different components (energy modules) that try to meet the demand (either hot water, chilled water or electricity) for all 8760 hours of the year. A module will supply energy up to its given capacity. If the demand is higher than a module's capacity, the remaining demand will be met by the subsequent modules in the chain. The chain of energy supplies is defined here and illustrated in [Fig. 17.1](#).

Fig. 17.1: Schematic arrangement of various thermal plant equipment that are incorporated in this tool

The input to the tool includes hourly load profiles for hot water, chilled water, and electricity, as simulated by the Operational Energy Module and, in a future version of this plugin, the dynamic distribution network module. As each equipment is individually enabled or disabled by the user, and its performance characteristics are modified, the thermal plant planning tool calculates the hourly consumption of purchased grid electricity and natural gas.

17.2 Input Profiles

Model component / Input parameter	Default Value
Hourly chilled water load profile (kWh)	From distribution network
Hourly hot water load profile (kWh)	
Hourly electricity load profile (kWh)	
Hourly location solar radiation data (kWh/m2)	From selected weather file
Hourly location wind speed data (m/s)	

Note: In this version of the plugin, the model assumes there is no heat loss due to the distribution network.

17.3 Energy Supply Modules

The following section presents a mathematical description of each energy modules.

17.3.1 Absorption chillers

The model assumes that the absorption chillers meet the base load. It is the first module that will be used to meet the demand up to the chillers capacity. The annual hot water required to generate project chilled water, hw_{abs} , is added to the projects hot water demand and can be expressed as:

$$hw_{abs} = \sum_{n=1}^{8760} \left[\frac{\min(chw_n, cap_{abs})}{ccop_{abs}} \right] \quad (17.1)$$

where:

chw_n is the chilled water load from the distribution network at a particular timestep

cap_{abs} is the cooling capacity of absorption chillers

$ccop_{abs}$ is the Cooling Coefficient Of Performance

The chilled water demand met by the absorption chiller, chw_{abs} , is given by:

$$chw_{abs} = \min(chw_n, cap_{abs}) \quad (17.2)$$

Input Parameters

Model component / Input parameter	Description	Default Value
Capacity as percent of peak cooling load (%)	Ratio of cooling delivered by absorption chillers to total load at peak conditions	0
Cooling coefficient of performance	Average annual ratio of useful cooling delivered to natural gas consumed	0.90

Typical Values

Table Table 17.1 summarizes typical chiller efficiency ranges for different chiller technologies.

Table 17.1: Typical chiller efficiency ranges with different prime drivers

Chiller type	Typical efficiency	Capacity (KW)
Steam driven centrifugal HW absorption chiller (single effect)	COP 0.55–0.70	<200 to >11500
Steam absorption chiller (single effect)	COP 0.60–0.8	<200 to >11500
Direct fired (double effect) absorption chiller	COP 0.85–1.30	<350 to >11500

17.3.2 Electric chillers

If the absorption chillers can't supply all the chilled water demand, then the electric chillers will cover the remaining. This module has a infinite capacity. It's electricity demand [kWh] is defined as:

$$elec_{ech} = \begin{cases} \sum_{n=1}^{8760} \frac{chw_n - cap_{abs}}{ccop_{ech}}, & \text{if } chw_n > cap_{abs} \\ 0, & \text{otherwise} \end{cases} \quad (17.3)$$

and the chilled water produced [kWh] is defined as:

$$chw_{ech} = \begin{cases} \sum_{n=1}^{8760} chw_n - cap_{abs}, & \text{if } chw_n > cap_{abs} \\ 0, & \text{otherwise} \end{cases} \quad (17.4)$$

Input Parameters

Model component / Input parameter	Description	Default Value
Cooling coefficient of performance	Average annual ratio of useful cooling delivered to electricity consumed	4.40

Typical Values

Table Table 17.2 summarizes typical chiller efficiency ranges for different chiller technologies.

Table 17.2: Typical chiller efficiency ranges with different prime drivers¹

Chiller type	Typical efficiency	Capacity (KW)
Electric centrifugal (standard single compressor)	COP 4.7–6.75	1750 to > 5275
Electric centrifugal (standard dual compressor)	COP 4.7–6.75	5275 to >14000
Electric centrifugal (single compressor industrial – field erected)	COP 4.7–6.75	8800 to > 20000

¹

S. Tredinnick and G. Phetteplace, 8 - District cooling, current status and future trends, In Woodhead Publishing Series in Energy, edited by Robin Wiltshire., Woodhead Publishing, Oxford, 2016, Pages 167-188, Advanced District Heating and Cooling (DHC) Systems, ISBN 9781782423744, <https://doi.org/10.1016/B978-1-78242-374-4.00008-2>. (<https://www.sciencedirect.com/science/article/pii/B9781782423744000082>)

17.3.3 Solar thermal collectors

Similarly to chilled water, the hourly hot water load profile (hw_n), is an input to the model from the distribution network. This module calculates hot water generation potential per unit collector area based on user defined values of collector efficiency (eff_{shw}), an area utilization factor to account for collector frames and other infrastructural requirements ($util_{shw}$), and miscellaneous losses ($loss_{shw}$). In addition to these performance parameters, users input an offset target as a percentage of total annual hot water demand (off_{shw}). In combination with the hourly solar radiation data available from the weather file (rad_n), the model calculates the overall area needed for solar collectors ($area_{shw}$), and the annual total solar hot water generation to meet building loads (hw_{shw}), which can be expressed as:

$$area_{shw} = \sum_{n=1}^{8760} \frac{hw_n * off_{shw}}{rad_n eff_{shw} (1 - loss_{shw}) util_{shw}} \quad (17.5)$$

where:

hw_n is the hot water load profile at a particular timestep

off_{shw} is the user-defined amount of energy the module should produce (or offset)

rad_n is the solar energy falling on a horizontal surface during the timestep

eff_{shw} is the collector efficiency

$loss_{shw}$ is the collector

$util_{shw}$ is the area utilization factor

$$hw_{shw} = \sum_{n=1}^{8760} \min(rad_n area_{shw} eff_{shw} util_{shw} (1 - loss_{shw}), hw_n + hw_{abs}) \quad (17.6)$$

Note: This module cannot model the solar radiation on an inclined surface. It will therefore assume solar collectors are laid horizontally. This simplification is fine considering the level of detail of an early design analysis.

Model component / Input parameter	Description	Default Value
Target offset as percent of annual energy (%)	Ratio of heating delivered by solar collectors to total annual heating requirement	0
Collector efficiency (%)	Average annual ratio of the heat output from collectors divided by received solar radiation	45
Area utilization factor (%)	Accounts for collector frames and other infrastructural requirements	75
Miscellaneous losses (%)	Accounts for other losses including leakage, distribution, or context shading	15

17.3.4 Hot Water Storage Tanks

Any solar generation that is surplus to the project loads for each hour is assumed to charge a hot water tank. Based on a user defined tank capacity (cap_{hwt}), the previous hour's charge (chg_{n-1}) and current balance (surplus - deficits), the model calculates the tank charge for each hour (chg_n). First, the solar hot water balance is defined as:

$$bal_{shw} = rad_n area_{shw} eff_{shw} util_{shw} (1 - loss_{shw}) - hw_n - hw_{abs} \quad (17.7)$$

It represents the energy that goes into or comes out of the storage system. If bal_{shw} is negative, it means that we are discharging the tank during this timestep. If it is positive, then we are charging the tank. Tank charging and discharging is limited by the charging and discharging rates, which are calculated based on the size of the storage.

Note: Charging and Discharging Rates

The module assumes the storage system can be fully charged during n days of autonomy, assuming only 12 hours per day can supply solar energy to the tank. For example, if a storage tank has an autonomy of 3 days, its charging rate will be $rate = \frac{cap_{hwt}}{nb_{days} * 12 \text{ hours/day}}$ [kWh/h], where cap_{hwt} is the capacity of the tank [kWh] and nb_{days} is the number of days of autonomy specified by the user.

Input Parameters

Model component / Input parameter	Description	Default Value
Capacity as the number of days of autonomy (#)	Number of average annual days that tanks can meet demand once fully charged	0
Miscellaneous losses (%)	Accounts for other losses including leakage and distribution	15

17.3.5 Electric Heat Pumps

The model assumes that these loads are first met by renewables along with thermal storage, and only demand in surplus of their user defined capacity is sent over to the remaining equipment. The electricity consumption ($elec_{ehp}$), required to generate hot water from heat pumps is based on their capacity (cap_{ehp}), and heating coefficient of performance ($hcop_{ehp}$), and can be expressed as:

$$elec_{ehp} = \sum_{n=1}^{8760} \frac{\min(hw_n, cap_{ehp})}{hcop_{ehp}} \quad (17.8)$$

The hot water produced is then defined as:

$$hw_{ehp} = \text{SmallestNonNegative}(hw_n + hw_{abs} - hw_{shw} - hw_{hwt} - hw_{chp}, cap_{ehp}) \quad (17.9)$$

where:

hw_n is the hot water load profile at a particular timestep

hw_{abs} is the additional load from the *Absorption chillers*

hw_{shw} is the load covered by the *Solar thermal collectors* array

hw_{hwt} is the load covered by the *Hot Water Storage Tanks*

hw_{chp} is the load covered by the *Combined Heat & Power* plant

Input Parameters

Model component / Input parameter	Description	Default Value
Capacity as percent of peak heating load (%)	Ratio of heating delivered by heat pumps to total load at peak conditions	0
Heating coefficient of performance	Average annual ratio of useful heating delivered to electricity consumed	3.20

17.3.6 Natural gas boilers

The Natural Gas Boilers acts as the last module that can produce hot water. Its priority is lower than the *Combined Heat & Power* plant, which means that the hot water produced by the boilers supplements any remaining energy that could not be produced by the *Solar thermal collectors*, the *Hot Water Storage Tanks* or the *Combined Heat & Power* plant.

With a user defined heating efficiency (eff_{ngb}), the hot water produced by the Natural Gas Boilers (hw_{ngb}) is defined as:

$$hw_{ngb} = \max(hw_n - hwehp + hwabs - hwshw - hw_{hwt} - hw_{chp}, 0); \quad (17.10)$$

The natural gas consumption of the boilers is then defined as:

$$ngas_{ngb} = \max(hw_n + hwabs - hwehp - hwshw - hw_{hwt} - hw_{chp}, 0) \quad (17.11)$$

Where:

hw_n is the hot water load profile at a particular timestep

$hwabs$ is the additional load from the *Absorption chillers*

hw_{hwp} is the load covered by the *Electric heat pumps*

$hwshw$ is the load covered by the *Solar thermal collectors* array

hw_{hwt} is the load covered by the *Hot Water Storage Tanks*

hw_{chp} is the load covered by the *Combined Heat & Power* plant

Input Parameters

Model component / Input parameter	Description	Default Value
Heating efficiency (%)	Average annual ratio of useful heating delivered to fuel consumed	70

17.3.7 Photovoltaic Array

The photovoltaic calculation is based on user defined values for panel efficiency (eff_{pv}), an area utilization factor to account for panel frames and other infrastructural requirements ($util_{pv}$), and miscellaneous losses ($loss_{pv}$). In addition to these performance parameters, users input an offset target as a percentage of total electricity demand. In combination with the hourly solar radiation data available from the weather file (rad_n), The model calculates the overall area needed for the photovoltaic array ($area_{pv}$), and the total electricity generation ($elec_{pv}$), which can be expressed as:

$$elec_{pv} = \sum_{n=0}^{8760} rad_n area_{pv} eff_{pv} util_{pv} (1 - loss_{pv})$$

Note: This module cannot model the solar radiation on an incline surface. It will therefore assume solar collectors are laid horizontally.

Model component / Input parameter	Description	Default Value
Target offset as percent of annual energy (%)	Ratio of electricity delivered by PV Array to total annual electricity requirement	0
Cell efficiency (%)	Average annual ratio of electricity output from array divided by received solar radiation	15
Area utilization factor (%)	Accounts for module frames and other infrastructural requirements	75
Miscellaneous losses (%)	Accounts for other losses including line losses and balance of system	15

17.3.8 Wind Turbines

The wind turbine calculation is based on user defined values for turbine coefficient of performance (C_p), the rotor area per turbine (A), and miscellaneous losses ($loss_{wnd}$). In addition to these performance parameters, users input an offset target as a percentage of total electricity demand (off_{wnd}). In combination with the hourly wind velocity data available from the weather file (V), the model calculates the number of turbines needed and the annual electricity generation based on equation (17.12) and equation (17.13).

$$num_{wnd} = \frac{\sum_{n=1}^{8760} elec_n off_{wnd}}{\sum_{n=1}^{8760} pow_n (1 - loss_{wnd})} \quad (17.12)$$

Where:

$elec_n$ is the electricity demand at timestep n .

off_{wnd} is the target offset as percent of annual energy.

pow_n is the power output in kilowatts for one turbine (calculated from equation (17.14))

$loss_{wnd}$ is the miscellaneous losses.

$$elec_{wnd} = power (1 - loss_{wnd}) num_{wnd} \quad (17.13)$$

Where:

$elec_n$ is the electricity demand at timestep n .

off_{wnd} is the target offset as percent of annual energy.

$$pow_n = \begin{cases} \frac{C_p \rho A V_n^3}{2 \cdot 1000}, & \text{if } cut_{in} < V_n < cut_{out} \\ 0, & \text{otherwise} \end{cases} \quad (17.14)$$

Where:

pow_n is the turbine's power output [kW] at a particular timestep.

C_p is the maximum power coefficient, ranging from 0.25 to 0.45. It is dimensionless (theoretical maximum = 0.59).

ρ is the air density [kg/m³]. Taken constant as 1.2753.

A is the rotor swept area [m²].

V_n is the Wind Speed [m/s] at a particular timestep.

Equation (17.14) is taken from windpowerengineering.com.

Input Parameters

Model component / Input parameter	Description	Default Value
Target offset as percent of annual energy (%)	Ratio of electricity delivered by wind turbines to total annual electricity requirement	0
Turbine coefficient of performance	Average annual ratio of power captured by turbine to total power available in the wind	0.3
Cut-in speed (m/s)	Minimum wind speed at which the turbine blades overcome friction and begin to rotate	5
Cut-out speed (m/s)	Speed at which the turbine blades are brought to rest to avoid damage from high winds	25
Rotor area per turbine (m ²)	The swept area is the plane of wind intersected by the turbine	15
Miscellaneous losses (%)	Accounts for other losses	15

17.3.9 Battery Bank

Any renewable energy generation that is surplus of the project loads for each hour is assumed to charge a Battery Bank. Based on a user defined battery capacity (cap_{bat}), the previous hour's charge (chg_{n-1}) and current balance (surplus - deficits), the model calculates the battery charge for each hour (chg_n). Similarly to the Hot water tank, charging and discharging of the battery is limited by its charging and discharging rates. The rates are assumed to follow the same principles as the hot water tank charging and discharging rates.

The electricity balance is defined as the balance of generated electricity and electricity consumption at a particular timestep :

$$bal_{elec} = elec_{pv} + elec_{wnd} - elec_n - elec_{ech} - elec_{ehp} \quad (17.15)$$

It represents the energy that goes into or comes out of the storage system. If bal_{bal} is negative, it means that we are discharging the battery during this timestep. If it is positive, then we are charging the battery. Furthermore, the battery sees a certain loss ($loss_{bat}$) whenever charging and discharging occurs and thus the battery charge is defined as:

$$bat_{chg,n} = \begin{cases} \max [bat_{chg,n-1} + bal_{elec} (1 - loss_{bat}) , \\ \max (bat_{chg,n-1} - dchg_{bat}, 0) , \\ \text{SmallestNonNegative} [bat_{chg,n-1} + bal_{elec} (1 - loss_{bat}) , \\ \text{SmallestNonNegative} (bat_{chg,n-1} + chrg_{bat}, cap_{bat}) , \end{cases} \quad \begin{matrix} \text{if } bal_{elec} < 0 \\ \\ \text{if } bal_{elec} \geq 0 \end{matrix} \quad (17.16)$$

Model component / Input parameter	Description	Default Value
Capacity as number of days of autonomy (#)	Number of average annual days that batteries can meet demand once fully charged	0
Miscellaneous losses (%)	Accounts for other losses including line losses and balance of system	15

17.3.10 Combined Heat & Power

By default, the combined heat and power component tracks and serves the remaining project hot water demand up to its maximum heating capacity. The heating capacity is calculated by the model based on user defined electrical capacity

(cap_{chp}), electricity generation efficiency (eff_{chp}), and heat recovery effectiveness ($hrec_{chp}$). The annual heating energy recovered from the combined heat and power plant and supplied to the project (hw_{chp}), can be expressed as:

$$hw_{chp} = \begin{cases} \min \left[\frac{cap_{chp}}{eff_{chp}} hrec_{chp}, hw_n + hw_{abs} - hw_{shw} - hw_{hwt} - hw_{ehp} \right] & \text{for thermal tracking} \\ ngas_{chp} hrec_{chp} & \text{for electrical tracking} \end{cases} \quad (17.17)$$

The module can also be assigned to track electricity instead of the thermal load. In this case, the combined heat and power component tracks and serves the project electrical load up to its capacity that remains after subtracting the renewable system ($elec_{ren}$) and battery bank ($elec_{bat}$) supply from overall demand ($elec_n$).

Model component / Input parameter	Description	Default Value
Tracking mode	Control the generator to prioritize meeting the hot water or electricity demand	Thermal
Capacity as percent of peak electric load (%)	Ratio of electricity delivered by generator to total demand at peak conditions	0
Electrical efficiency (%)	Average annual ratio of electricity delivered by generator to fuel consumed	22
Waste heat recovery effectiveness (%)	Average annual ratio of usable heat recovered from generator to fuel consumed	29

17.4 References

Authorship

HARVEST – the urban food production simulation plugin – estimates food yields of indoor farms and their associated operational building energy use, water use and carbon emissions, as well as their economic performance through metrics such as operational costs and job creation. It is developed by [Khadija Benis](#) (MIT). The following sections present an overview of the inputs, structure and outputs of the module.

18.1 Background

18.1.1 Controlled-Environment Agriculture

Controlled-Environment Agriculture (CEA) is an umbrella term for a large set of cultivation systems where the environment is controlled in order to extend crop growth period. Whereas the scope of the designation is broad enough to include very low-tech systems such as cloches set on field-grown crops, this first version of HARVEST only considers indoor conditioned farms – also called [Plant Factories](#) – using soilless cultivation techniques and artificial lighting. These indoor farms include container farms, an emerging trend that consists of growing crops in retrofitted shipping containers equipped with hydroponic systems. Controllable environment variables in CEA include CO₂, humidity, light, nutrients, pests, temperature, ventilation and water.

HARVEST estimates food yields of indoor farms and their associated operational building energy use, as well as water use and carbon emissions. It also provide insights on the economic performance of the farms through metrics such as operational costs and jobs created locally. Additionally, it compares simulation outputs to existing urban supply chains and provides a carbon balance as well as a site premium. The following sections describe the simulation inputs, the structure of the tool and its underlying models, and the simulation outputs.

Fig. 1: Key performance metrics provided by HARVEST



18.1.2 Modelling crop growth

Photosynthesis is fundamental to plant growth and has been shown to be affected by environmental factors such as light and temperature (Kozai et al., 2016). Crop growth models consist of mathematical equations that represent these reactions occurring between plants and their environment, predicting the growth rate and final state of total biomass and harvestable yield (Jame and Cutforth, 1996). HARVEST food production calculations use the gathered data on optimal growth conditions of crops and apply these models as described in the sections below.

Thermo-classification of vegetables was one of the earliest attempts to group plants and remains widely used today (Welbaum, 2015). Based on their light and temperature requirements for optimal growth, HARVEST clusters crops into four groups – red, orange, light green, and dark green crops (see Fig. 2). Red and orange are warm season crops. Red crops prefer temperatures above 21 oC, whereas orange crops are adapted to temperatures ranging from 18.3 to 29.4 oC. Light green and dark green are cool-season crops. Light green crops are adapted to temperatures ranging from 12.8 to 23.9 oC, whereas dark green crops prefer average monthly temperatures of 15.6 to 18.3 oC.

Fig. 2: Classification of crops based on light and temperature requirements

18.2 Simulation inputs

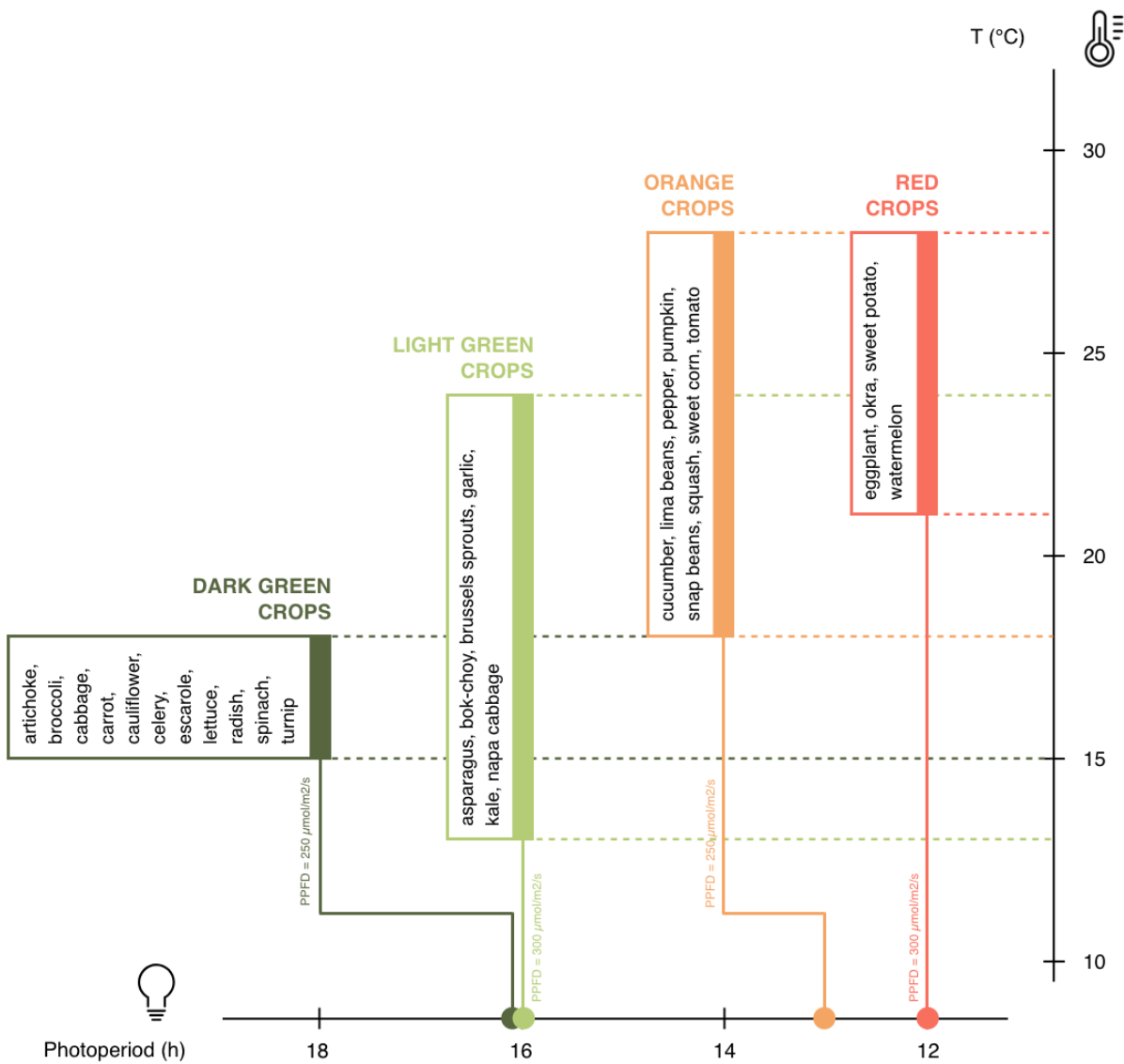
18.2.1 CEA Farm templates

Simulating indoor crop growth requires the definition of specific templates for the “farm” building type, which are based on the optimal indoor conditions required by the plants. A default crop template library is embedded in HARVEST. In order to build these templates, a database of optimal growth conditions for a set of crops was developed through a literature review of scientific articles describing the settings and outcomes of controlled-environment cultivation experiments conducted in growth chambers equipped with hydroponic systems. The UMI Template Editor can be used to edit and/or add templates.

Zone information

The building envelope can be customized by the user according to the specific needs of a given project, as indoor farms can be implemented in any building. For instance, to model a shipping container growing unit, the user can set the envelope and adjust its dimensions according to the envelope properties and dimensions of standard shipping containers.

Occupancy, equipment and lighting loads are defined according to farms’ operation requirements. For occupancy, a density of farmers (ppl/m²) and a farm occupancy schedule were set, documented by existing practices in commercial hydroponic farms. Similarly, based on equipment specificities and schedules of hydroponic farms, equipment power density (W/m²) and equipment schedule were set. Light power density (W/m²) is defined according to the specificities of the lighting fixtures and to the number of vertically stacked growing racks for a given crop. A lighting schedule is allocated based on the photoperiod requirements of the crop, and an illuminance target (lux) is set according to the PPFD. Finally, heating and cooling set points are defined according to the thermal requirements of each crop, documented in the literature.



Zone information	Settings
Constructions	Customized by the user
Loads	From crop requirements
Ventilation	From crop requirements
Domestic hot water	From crop requirements
Windows	All WWR automatically set to 0% when selecting the CEA Farm Simulator

Schedules

Depending on the distribution of labor that is assumed for the farms, daily occupancy can be allocated in different ways. As for lighting, testing different schedules can have great impacts on simulation results. In fact, under a given optimal temperature range, plant growth is further affected by light intensity and it has been established that under a controlled environment, the response of crop growth to increase in PPFD is virtually linear (e.g., Cockshull et al., 1992). This linear response of plant growth over target daily Photosynthetically Active Radiation PAR24 – also called Daily Light Integral (DLI) – and the reciprocity between the effects of PPFD and photoperiod at the same DLI can be used in lighting design when choosing the fixtures' PPFD and deciding photoperiod needed to achieve target DLI (Kozai et al., 2016). For instance, the target DLI of 11 mol/m²/day that is required for strawberry can either be achieved by 255 μ mol/m²/s through a photoperiod of 12 hours or by 170 μ mol/m²/s through a photoperiod of 18 hours. The reduction of PPFD reduces the number of lighting fixtures and thereby capital costs, while reducing and changing photoperiod distribution can take advantage of the off-peak hours of utility charges and contribute to a better energy demand management.

Schedules	Settings
Occupancy	Farmers occupancy
Equipment	Farm equipment
Lighting	From crop optimal photoperiod
Heating	From crop optimal temperature range
Cooling	From crop optimal temperature range
Domestic hot water	Farm hot water use

18.2.2 Urban Food Profiles (Urban foodprints)

A fundamental preliminary step in the sustainability assessment of urban food production consists of collecting and integrating data on the existing supply chain for the crops to be assessed. The [Urban Foodprints method](#) consists of getting snapshots of the existing food system for a given urban area, using metrics related to food demand, resource use intensity of production, and food miles, to estimate the overall environmental impacts caused by the supply of a given produce to the city (Benis et al., 2018). In addition to this environmental sustainability component, HARVEST integrates a cost analysis component. A site-specific input file is therefore needed to run simulations: the Urban Food Profile (UFP), which contains crop-specific data related to the existing supply chain for the assessed crops. Specifically, the UFP file is a JSON file containing the list of simulated vegetables for which the following data inputs must be provided:

Input name	Type	Unit	Description
Name	(string)	n/a	Crop name
Color	(string)	n/a	Color code of the crop group
TemplateGroup-Code	(string)	n/a	R = Red; O = Orange; LG = Light Green; DG = Dark Green
PerCapitaSupply	(double)	kg/cap/year	Yearly per capita food supplied to the population
FoodMiles	(double)	km	Average distance traveled by the crop to reach the city
PerKgEnergyUse	(double)	kWh/kg	Embedded energy use per unit weight of imported produce
EFEnergyOrigin	(double)	kgCO ₂ eq/kWh	Emission factor of energy at origin of produce
WaterUseIm-ported	(double)	L/kg	Embedded water use per unit weight of imported produce
EFWaterOrigin	(double)	kgCO ₂ eq/L	Emission factor of water at origin of produce
FoodWaste	(double)	n/a	Share of conventional agricultural output that is wasted
AverageRetail-Price	(double)	\$/kg	Yearly average selling price of the produce
LightUseEfficiency	(double)	kg/mol/m ²	Ratio of gross yield to the absorbed Photosynthetically Active Radiation (PAR)
WaterUseEfficiency	(double)	kg/L	Ratio of biomass produced to the rate of transpiration
OccupancyCoefficient	(double)	n/a	Ratio of area occupied by the plants to the total floor area of the farm
RootDepth	(double)	m	Maximum depth of the roots
ShootHeight	(double)	m	Maximum height of the plant before harvest
TrayInterval	(double)	n/a	Interval to keep plant canopies at optimal distance from lighting fixtures
HarvestIndex	(double)	n/a	Ratio of harvested edible yield to total gross yield
CropLosses	(double)	n/a	Share of yield lost at farm gate
EFWater	(double)	kgCO ₂ eq/m ³	Emission factor of water
WaterRate	(double)	\$/m ³	Water rate in the city

18.3 CEA Farm Simulator

18.3.1 Marketable yield

HARVEST provides the yearly Marketable Yield Y_M (kg/m²/year), expressed as follows:

$$Y_M = Y_{GNTCAHI}(1 - L) \quad (18.1)$$

where:

Y_G is the yearly Gross Yield (kg/m²/year);

n_T is the number of growing trays that are vertically stacked in the farm (see Fig. 3);

c_A is the coefficient of occupancy of the growing area in the farms (see Fig. 4);

HI is the Harvest Index;

L are crop losses.

Gross yields have been defined as the total amount of CO₂ fixed by the plants per unit time through photosynthesis into organic matter (Gough, 2011), and modeled as the product of canopy light interception and Light Use Efficiency (LUE):

$$Y_G = PAR_{365} LUE \quad (18.2)$$

where:

PAR_{365} is the Photosynthetically Active Radiation available per year (mol/m²/year);

LUE is the Light Use Efficiency of the crop (kg/mol/m²).

where:

$PAR_{\{365\}}$ is the Photosynthetically Active Radiation available per year (mol/m²/year);

LUE is the Light Use Efficiency of the crop (kg/mol/m²).

Photosynthetically Active Radiation (PAR) – the amount of light available for photosynthesis – derives from the Photosynthetic Photon Flux Density (PPFD) and the optimal photoperiod found in the literature for each crop:

$$PAR_{365} = (PPFD Ph 3600) / 10^6 \quad (18.3)$$

where:

$PPFD$ is the Photosynthetic Photon Flux Density (μmol/m²/s);

Ph is the Light Use Efficiency of the crop (kg/mol/m²).

In the templates, both the PPFD and the photoperiod can be altered by the user by changing the illuminance target for the former, and the lighting schedules for the latter.

In fully artificially-lit farms, crops are stacked vertically in order to maximize yields within the volume of the enclosure (see Fig. 3). The number of growing trays n_T is calculated by HARVEST, based on the floor-to-floor height that was set by the user for the farm and on the spatial needs that were reported in the literature for each crop, as follows:

$$n_T = FFH / ((H_{shoot} + D_{root})i) \quad (18.4)$$

where:

FFH is the Floor-to-Floor Height (m);

H_{shoot} is the height of the shoot (m);

D_{root} is the depth of the root (m);

i is the interval, a coefficient that was applied in order to take into account the extra space that is necessary so that plants do not reach the lighting fixtures above them. It was set to 1.5.

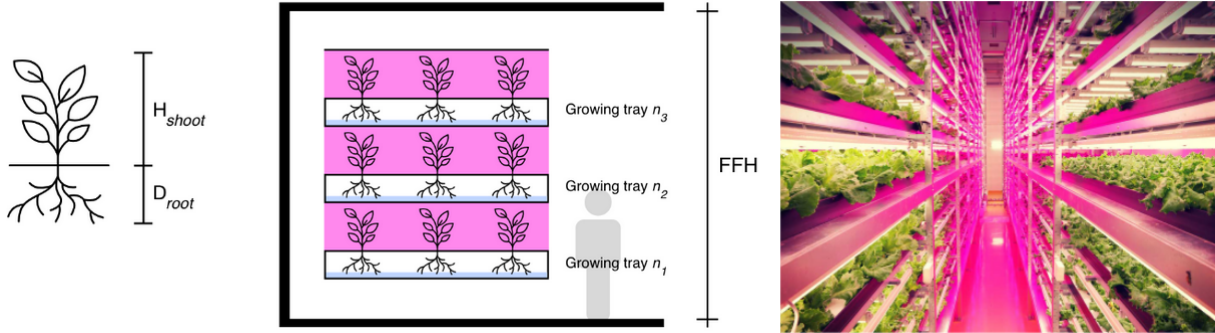


Fig. 3: Vertical stacking of crops in plant factories

The cA coefficient represents the ratio of the area occupied by the plants to the total floor area of the farm. Architectural drawings of existing indoor farms were reviewed. In plant factories, the culture room occupies 60% of total floor area, the remaining area being used for circulation, sanitary installations, technical rooms and administrative office space (see Fig. 4). In the culture room, the growing area represents around 70% of the floor area.

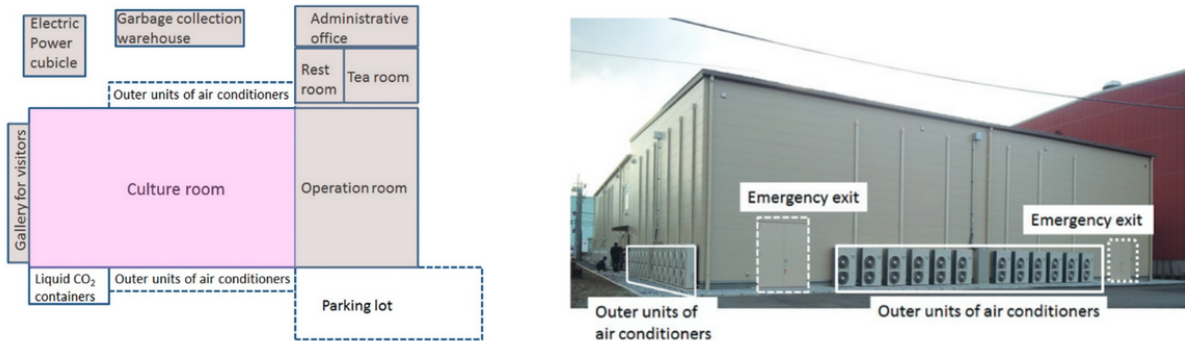


Fig. 4: Rough floor plan and outdoor view of a plant factory ("Mirai" in Chiba, Japan). Source: Kozai et al. (2016)

The Harvest Index HI represents the ratio of harvested edible yield to total dry matter produced. It was collected from the literature for each crop of the database, and varies from 0.20 for cucumber to 0.80 for cabbage.

Finally, crop losses L were set to 5%, based on the literature (Vanthoor et al., 2012) and on existing practices in commercial hydroponics farms (Benis et al., 2017).

18.3.2 Water Use

The yearly water use per unit floor area WA (m³/m²/year) is estimated as follows:

$$WA = (Y_G)/WUEn_{TC_A}0.001 \quad (18.5)$$

where:

Y_G is the yearly Gross Yield (kg/m²/year);
 WUE is the Water Use Efficiency of the crop (kg/L);
 n_T is the number of growing trays that are vertically stacked in the farm;
 c_A is the coefficient of occupancy of the growing area in the farms.

18.3.3 Energy Use

When the CEA Farm Simulator is selected for a building, UMI generates multizone EnergyPlus™ models for the farm (one zone per floor), to which construction properties, loads, conditioning settings and schedules are associated based on the allocated farm template. All Window-to-Wall Ratios (WWR) are automatically set to 0% (see Fig. 5). Energy Use Intensity (EUI) of the farms is displayed in the UMI energy module.



Fig. 5: From input geometry to multizone farm

18.3.4 Carbon Balance

Based on the UFP inputs and on the operational resource use of the simulated urban farms (water and energy), HARVEST displays the carbon balance, i.e., the difference between the existing supply chain and the local food production scenario, showing potential Greenhouse Gas (GHG) emissions mitigation:

$$GHG_{BALANCE} = GHG_{BASE} - GHG_{CEA} \quad (18.6)$$

Crop-embedded GHG emissions (kgCO₂eq) under the existing supply chain (GHG_{BASE}) include emissions related to resource use during the cultivation process (water and energy) as well as emissions related to food miles and food waste from farm to retail:

$$GHG_{BASE} = GHG_{BASE}^E + GHG_{BASE}^W + GHG_{BASE}^{FM} + GHG_{BASE}^{FW} \quad (18.7)$$

where:

GHG_{BASE}^E , GHG_{BASE}^W , GHG_{BASE}^{FM} and GHG_{BASE}^{FW} are the respective baseline embedded emissions of energy, water, food miles and food waste.

Embedded GHG emissions of on-site food production in controlled-environment urban farms GHG_{CEA} (kgCO₂eq) include the GHG emissions related to the operation of the farms – namely of water and energy use:

$$GHG_{CEA} = GHG_{CEA}^E + GHG_{CEA}^W \quad (18.8)$$

where:

GHG_{CEA}^E and GHG_{CEA}^W are the respective baseline embedded emissions of energy use and water use (kgCO₂eq).

18.3.5 Jobs

The jobs calculation uses the occupancy of the farms that was set in the templates, which was documented by existing practices in commercial hydroponic greenhouses and vertical farms, and the floor area of the simulated urban farms.

18.3.6 Site premium

Based on the inputs of the UFP and on the outputs of the CEA Farm Simulator, HARVEST not only displays costs of on-site food production, but also the difference between the baseline (i.e., the consumers' food expenditure under the existing supply chain) and the simulated local food production scenario, showing the site premium for each crop type.

18.4 Simulation outputs

18.4.1 Site metrics

Site metrics provide an overview on (1) local food consumption; (2) food expenditure; and (3) farming area needed for 100% self-sufficiency.

Metric	Unit	Description
Food consumption	t/year	Total site yearly consumption of vegetables (excl. food waste across the supply chain)
Food expenditure	k\$/year	Yearly expenditure of the residents to purchase vegetables
Estimated growing area needed for 100% self-sufficiency	m ²	Estimated farming area needed to fully satisfy the local demand with on-site hydroponic farming

18.4.2 Key performance metrics

Metric	Unit	Description
Local food production	t/year	Ratio of total site production in CEA farms to total site yearly demand for vegetables
Jobs created	workers	Number of jobs created by on-site CEA farms
Water use	m ³ /year	Total on-site water use in CEA farms
Site premium	k\$/year	Total operational costs of CEA farms (incl. energy, water and labor)
Carbon balance	tCO ₂ eq/yr	Difference between baseline embodied GHG emissions of imported vegetables (incl. energy, water, food miles and food waste) and on-site GHG emissions resulting from the operation of CEA farms (incl. energy and water)

18.5 References

1. Benis, K., Reinhart, C., Ferrão, P., 2017. Development of a simulation-based decision support workflow for the implementation of Building-Integrated Agriculture (BIA) in urban contexts. *J. Clean. Prod.* 147, 589–602, <https://doi.org/10.1016/j.jclepro.2017.01.130>.
2. Benis, K., Gashgari, R., Alsaati, A., Reinhart, C., 2018. Urban Foodprints (UF) – Establishing baseline scenarios for the sustainability assessment of high-yield urban agriculture. *Int. J. Des. Nat. Ecodynamics* 13, 349–360, <https://doi.org/10.2495/DNE-V13-N4-349-360>.
3. Cockshull, K.E., Graves, C.J., Cave, C.R.J., 1992. The influence of shading on yield of glasshouse tomatoes. *J. Hortic. Sci.* 67, 11–24, <https://doi.org/10.1080/00221589.1992.11516215>.
4. Gough, C.M., 2011. Terrestrial Primary Production: Fuel for Life. *Nat. Educ. Knowl.* 3, 28, retrieved from <https://www.nature.com/scitable/knowledge/library/terrestrial-primary-production-fuel-for-life-17567411>.
5. Jame, Y.W., Cutforth, H.W., 1996. Crop growth models for decision support systems. *Can. J. Plant Sci.* 76, 9–19, <https://doi.org/10.4141/cjps96-003>.
6. Kozai, T., Niu, G., Takagaki, M., 2016. Plant Factory: An Indoor Vertical Farming System for Efficient Quality Food Production. Elsevier. <https://doi.org/10.1016/C2014-0-01039-8>.
7. Vanthoor, B.H.E., Gázquez, J.C., Magán, J.J., Ruijs, M.N.A., Baeza, E., Stanghellini, C., van Henten, E.J., de Visser, P.H.B., 2012. A methodology for model-based greenhouse design: Part 4, economic evaluation of different greenhouse designs: A Spanish case. *Biosyst. Eng.* 111, 336–349. <https://doi.org/10.1016/j.biosystemseng.2011.12.008>.
8. Welbaum, G.E., 2015. Vegetable Production and Practices.

19.1 Motivation

The utilization of high density and diversity in land-use is an effective strategy that decreases automobile dependency and contributes to more sustainable modes of transportation (namely walking and biking), as a short proximity between amenities encourages human powered transportation (HPT). To quantify the impact of applying such principles, the integration of simulation tools that evaluate cities' "walking friendliness" in the design process is becoming significant. Assessment of neighborhood walkability has long been considered a function of quarter mile to one and a half mile walking distances from housing units to vital amenities. This idea has been adapted by many walkability evaluation schemes in different forms, and has been proven to be a good indicator of "walking environments." Popular indices such as the "Walkscore" have been validated in terms of estimating neighborhood walkability and health as well as real estate prices.

19.2 How it Works

Walkscore measures the ease of residing in a certain area without depending on your car. We adapted this web-based tool to be used within the design environment of Rhino as a comprehensive modeling approach. The algorithm tests points of interest for proximity to nine North-American oriented amenities (Schools, Restaurants, Coffee, Shopping, Entertainment, Parks, Banks, Grocery and Books). Each amenity receives a different weight based on importance. Egress points for addresses are then rewarded based on distances to amenities, and a polynomial distance decay function is used to calculate scores. Within a distance of quarter mile, a full score is received, and at one mile, amenities receive about 12% of the score as a penalty. After one mile, scores slowly decrease with greater distance, until it reaches zero at 1.5 miles. There are other reward scores received by examined points based on street intersection densities and average block length. Scores range from 0 to 100.

Scoring is implemented by constructing a pedestrian travel network and performing a series of shortest-path calculations using Dijkstra's algorithm.

Setting Up a Rhino Model

Important: When creating a new Rhinoceros model for Umi, always use *Meters* as the unit system.

20.1 Step 1: Starting a new umi project

Create a new umi project or start from an existing one. To create a new project, follow the steps detailed in `setup_model`.

There is no need to set site information or set building information at this point. Click on “Simulate” to setup layers specific to mobility and then on the “Mobility” icon on the left. Click on “Create amenity layers” to generate layers appropriate for mobility simulation.

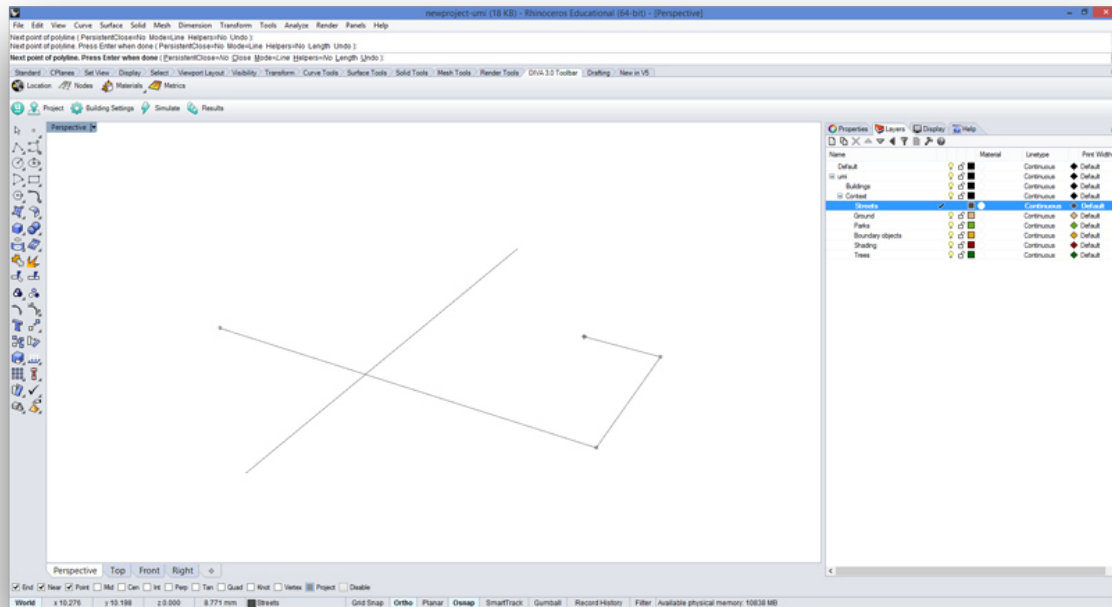
20.2 Step 2: Modeling Streets, Buildings and Amenities

20.2.1 Streets

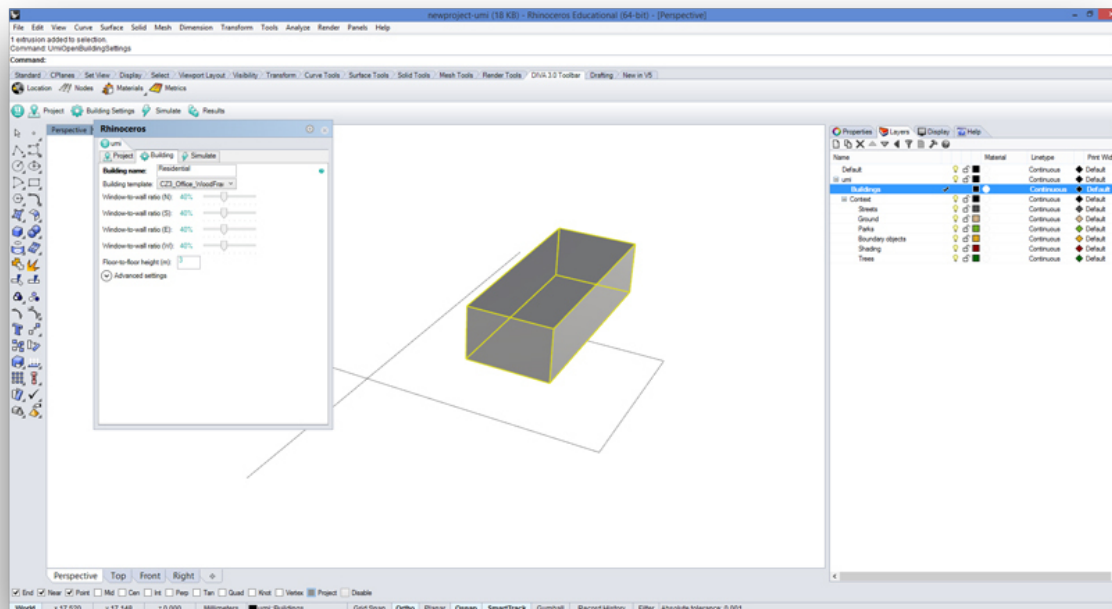
20.2.2 Buildings

Building massing can take the form of any Brep, and are placed exclusively on the “Buildings” layer. This should be done by drawing geometry and then setting it up in the settings button. Choose the Brep and click on “Settings” to give the building a name. That is enough for mobility simulation.

Important: Each Brep has to be connected to the streets network by a path that touches the massing. This is because the algorithm that generates a starting “egress” point for each building searches the start and end points of each curve in the model, and the nearest point becomes a door for the Walkscore simulation. If it is not connected, simulation will run by projecting an egress point to the nearest street, even if not connected.



On the Streets layer, streets can be drawn as any lines, curves or line-like curves.

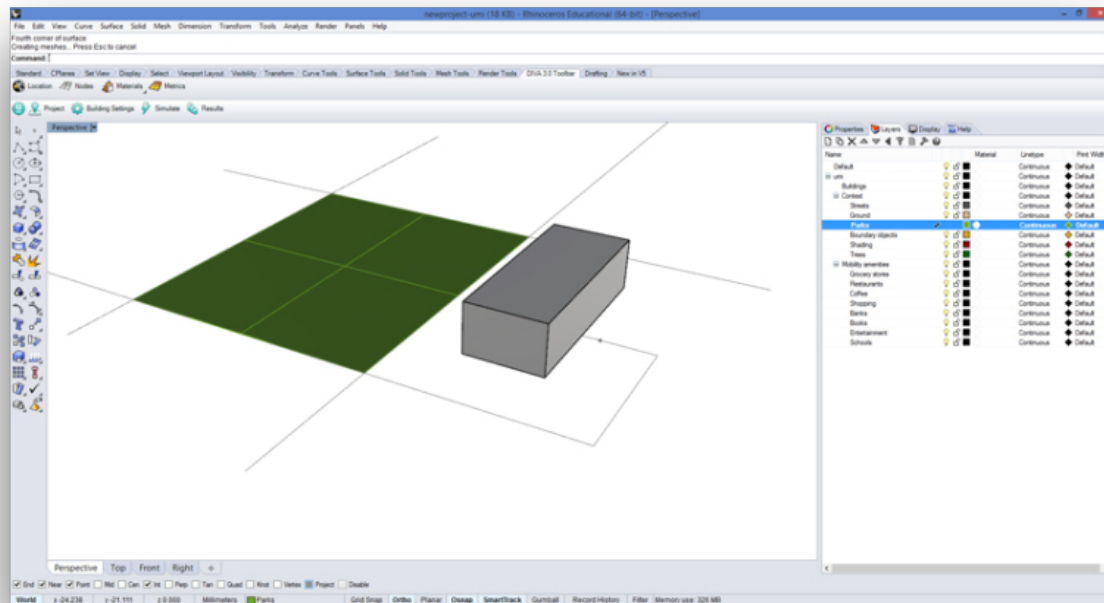


Draw buildings as Breps.

20.2.3 Amenities

Amenities are modeled as points on the streets network. They have to be placed precisely on a street curve. However, if they are not they will be projected to the nearest street line. A good tip is to use “Osnap” to snap to the nearest curve on the streets layer.

Important: place amenity points on the streets network, but not on the end of the curve that touches the building massing. This will make the algorithm consider that “start” and “end” points the same, and Walkscore will fail.



Amenities are drawn as points and parks as surfaces

The “Parks” amenity is the only amenity modeled as surfaces, and it has to be surrounded with street curves on all sides (regardless of the geometry). If a park is placed as a surface, it is recommended to model it by tracing an empty space between street curves.

Typically a Walkscore simulation will include streets, massings connected to the streets, amenity points and park surfaces.

20.3 Step 3: Running a Simulation

After selecting the “Simulate” button, choose the “Mobility” tab. You can run both the Walkability simulation and the Bikeability Simulation by pressing “Run All.” The next section explains how both algorithms work.

20.4 Step 4: Results Visualization

After a simulation runs, a new layer is created with simulation results. This will take the form of false colored buildings.

CHAPTER 21

Example

This file is for you to test if you are modeling for a Walkscore simulation correctly. After downloading the file, you have to set the location and set the building information for at least one Brep on the “Buildings” layer. Follow the *Setting Up a Rhino Model* steps, and you will find that walkscore and bikescore run correctly.

CHAPTER 22

Template Library Editor

This section provide details on the template files

This section provide details on the template files

23.1 Opaque material description

23.1.1 Conductivity

Todo: Section to be written

23.1.2 Cost

Todo: Section to be written

23.1.3 Density

Todo: Section to be written

23.1.4 Embodied Carbon

Todo: Section to be written

23.1.5 Embodied Energy

Todo: Section to be written

23.1.6 Substitution Rate Pattern

Todo: Section to be written

23.1.7 Substitution Timestep

Todo: Section to be written

23.1.8 Transportation Carbon

Todo: Section to be written

23.1.9 Transportation Distance

Todo: Section to be written

23.1.10 Transportation Energy

Todo: Section to be written

23.1.11 Moisture Diffusion Resistance

Todo: Section to be written

23.1.12 Roughness

Todo: Section to be written

23.1.13 Solar Absorptance

Todo: Section to be written

23.1.14 Specific Heat

Todo: Section to be written

23.1.15 Thermal Emittance

Todo: Section to be written

23.1.16 Visible Absorptance

Todo: Section to be written

23.2 Glazing material description

23.2.1 Conductivity

Todo: Section to be written

23.2.2 Cost

Todo: Section to be written

23.2.3 Density

Todo: Section to be written

23.2.4 Embodied Carbon

Todo: Section to be written

23.2.5 Embodied Energy

Todo: Section to be written

23.2.6 Substitution Rate Pattern

Todo: Section to be written

23.2.7 Substitution Timestep

Todo: Section to be written

23.2.8 Transportation Carbon

Todo: Section to be written

23.2.9 Transportation Distance

Todo: Section to be written

23.2.10 Transportation Energy

Todo: Section to be written

23.2.11 Dirt Factor

Todo: Section to be written

23.2.12 Back-side IR Emissivity

Todo: Section to be written

23.2.13 Front-side IR Emissivity

Todo: Section to be written

23.2.14 IR Transmittance

Todo: Section to be written

23.2.15 Back-side Solar Reflectance

Todo: Section to be written

23.2.16 Front-side Solar Reflectance

Todo: Section to be written

23.2.17 Solar Transmittance

Todo: Section to be written

23.2.18 Back-side Visible Reflectance

Todo: Section to be written

23.2.19 Front-side Visible Reflectance

Todo: Section to be written

23.2.20 Visible Transmittance

Todo: Section to be written

23.3 Opaque

Setting	Short Description
<i>Conductivity</i>	
<i>Cost</i>	
<i>Density</i>	
<i>Embodied Carbon</i>	
<i>Embodied Energy</i>	
<i>Substitution Rate Pattern</i>	
<i>Substitution Timestep</i>	
<i>Transportation Carbon</i>	
<i>Transportation Distance</i>	
<i>Transportation Energy</i>	
<i>Moisture Diffusion Resistance</i>	
<i>Roughness</i>	
<i>Solar Absorptance</i>	
<i>Specific Heat</i>	
<i>Thermal Emittance</i>	
<i>Visible Absorptance</i>	

23.4 Glazing

Setting	Short Description
<i>Conductivity</i>	
<i>Cost</i>	
<i>Density</i>	
<i>Embodied Carbon</i>	
<i>Embodied Energy</i>	
<i>Substitution Rate Pattern</i>	
<i>Substitution Timestep</i>	
<i>Transportation Carbon</i>	
<i>Transportation Distance</i>	
<i>Transportation Energy</i>	
<i>Dirt Factor</i>	
<i>Back-side IR Emissivity</i>	
<i>Front-side IR Emissivity</i>	
<i>IR Transmittance</i>	
<i>Back-side Solar Reflectance</i>	
<i>Front-side Solar Reflectance</i>	
<i>Solar Transmittance</i>	
<i>Back-side Visible Reflectance</i>	
<i>Front-side Visible Reflectance</i>	
<i>Visible Transmittance</i>	

This section provide details on the template files

24.1 Opaque Construction Description

24.1.1 Opaque assembly

Todo: This section should explain how a Construction element is created from multiple material layers

Important: All material layers must have a thickness. Massless layers are not supported at the moment.

24.1.2 Window assembly

Todo: This section should explain how a Window element is created from multiple material layers

Important: All material layers must have a thickness. Massless layers are not supported at the moment.

24.1.3 Structure assembly

Todo: This section should explain how a Structure element is created from multiple material layers

Important: All material layers must have a thickness. Massless layers are not supported at the moment.

This section provide details on the template files

25.1 Schedules

25.1.1 Day | Week | Year

Todo: Section to be written

Zone Information Tab

This section provide details on the Zone Information tab

Table 26.1: Zones tab parameters

Setting	Description	Unit	Default Value
<i>Constructions</i>	Description		
<i>Loads</i>	Description		
<i>Conditioning</i>	Description		
<i>Ventilation</i>	Description		
<i>Domestic Hot Water</i>	Description		
<i>Daylighth Mesh Resolution</i>	Description		
<i>Daylighth Workplane Height</i>	Sensor Node Height		0.8 m
<i>Internal Mass Construction</i>	Description		
<i>Internal Mass Exposed Floor Area</i>	Description		

Table 26.2: Loads tab parameters

Setting	Description	Unit	Default Value
<i>People</i>			
<i>Occupancy density</i>	Description		
<i>Occupancy schedule</i>	Description		
<i>Equipment</i>	Description		
<i>Equipment power density</i>	Description		
<i>Equipment availability schedule</i>	Description		
<i>Lighting</i>	Description		
<i>Lighting power density</i>	Description		
<i>Lighting availability schedule</i>	Description		
<i>Dimming type</i>	Description		
<i>Illuminance target</i>	Description		

Table 26.3: Constructions tab parameters

Setting	Description
<i>Facade</i>	
<i>Ground</i>	
<i>Partition</i>	
<i>Roof</i>	
<i>Slab</i>	
<i>Facade is adiabatic</i>	
<i>Ground is adiabatic</i>	
<i>Partition is adiabatic</i>	
<i>Roof is adiabatic</i>	
<i>Slab is adiabatic</i>	

Table 26.4: Conditioning tab parameters

Setting	Description	Units	Default Value
<i>Heating</i>			
<i>Heating setpoint</i>			
<i>Heating schedule</i>			
<i>Heating limit type</i>			
<i>Max heating capacity</i>			
<i>Max heating capacity</i>			
<i>Max heat flow</i>			
<i>Heating CoP</i>			
<i>Cooling setpoint</i>			
<i>Cooling schedule</i>			
<i>Cooling limit type</i>			
<i>Max cooling capacity</i>			
<i>Max cool flow</i>			
<i>Cooling CoP</i>			
<i>Mechanical ventilation</i>			
<i>Mechanical ventilation schedule</i>			
<i>Min fresh air per area</i>		m3/s-m2	0.0003
<i>Min fresh air per person</i>		m3/s-person	0.0025
<i>Economizer type</i>			NoEconomizer
<i>Heat recovery type</i>			None
<i>Heat recovery efficiency (latent)</i>			0.65
<i>Heat recovery efficiency (sensible)</i>			0.70

Table 26.5: Ventilation tab parameters

Setting	Description	Unit	Default Value
<i>Infiltration</i>	Description		
<i>Infiltration rate</i>	Description		
<i>Natural ventilation</i>	Description		
<i>Natural ventilation minimum outdoor air temperature</i>	Description		
<i>Natural ventilation maximum outdoor air temperature</i>	Description		
<i>Natural ventilation maximum relative humidity</i>	Description		
<i>Natural ventilation schedule</i>	Description		
<i>Natural ventilation zone temperature setpoint</i>	Description		
<i>Scheduled ventilation</i>	Description		
<i>Scheduled ventilation ACH</i>	Description		
<i>Scheduled ventilation schedule</i>	Description		
<i>Scheduled ventilation setpoint</i>	Description		
<i>Buoyancy</i>	Description		
<i>Wind</i>	Description		
<i>Afn</i>	Description		

Table 26.6: Domestic Hot Water tab parameters

Setting	Description	Unit	Default Value
<i>Enabled</i>	Description		
<i>Scheduled</i>	Description		
<i>Supply Temperature</i>	Description		
<i>Inlet Temperature</i>	Description		
<i>Flow rate</i>	Description		

Table 26.7: Windows tab parameters

Setting	Description	Unit	Default Value
<i>Type</i>	Description		
<i>Construction</i>	Description		
<i>Operable area</i>	Description		
<i>Shading is used</i>	Description		
<i>Shading system availability schedule</i>	Description		
<i>Shading system setpoint</i>	Description		
<i>Shading system transmittance</i>	Description		
<i>Shading system type</i>	Description		
<i>Zone mixing</i>	Description		
<i>Zone mixing availability schedule</i>	Description		
<i>Zone mixing delta temperature</i>	Description		
<i>Zone mixing flow rate</i>	Description		
<i>Virtual partition</i>	Description		
<i>Airflow network discharge coefficient</i>	Description		
<i>Airflow network temperature setpoint</i>	Description		
<i>Airflow network window availability</i>	Description		

26.1 Zones

Setting	Description	Unit	Default Value
<i>Constructions</i>	Description		
<i>Loads</i>	Description		
<i>Conditioning</i>	Description		
<i>Ventilation</i>	Description		
<i>Domestic Hot Water</i>	Description		
<i>Daylighth Mesh Resolution</i>	Description		
<i>Daylighth Workplane Height</i>	Sensor Node Height		0.8 m
<i>Internal Mass Construction</i>	Description		
<i>Internal Mass Exposed Floor Area</i>	Description		

26.1.1 Constructions

Assigns one of the *Constructions* objects to the selected zone.

26.1.2 Loads

Assigns one of the *Loads* objects to the selected zone.

26.1.3 Conditioning

Assigns one of the *Conditioning* created in the Conditioning Tab.

26.1.4 Ventilation

Assigns one of the *Ventilation* objects created in the Ventilation Tab.

26.1.5 Domestic Hot Water

Assigns one of the *Domestic Hot Water* objects created in the DHW Tab.

26.1.6 Daylighth Mesh Resolution

Defines the Daylighth Mesh Resolution. To use a finer mesh resolution when running any a daylighting simulation, adjust the “Geometric Density” option. Values are in meters. A fine mesh resolution will show a spacial distribution of daylighting better than a coarse one, but will take longer to calculate.

26.1.7 Daylighth Workplane Height

The distance of sampling nodes off of analysis surfaces. A value of 0.8 m will put the sensor nodes roughly at desk height.

26.1.8 Internal Mass Construction

Todo: Section to be written

26.1.9 Internal Mass Exposed Floor Area

Todo: Section to be written

26.2 Loads

Setting	Description	Unit	Default Value
<i>People</i>			
<i>Occupancy density</i>	Description		
<i>Occupancy schedule</i>	Description		
<i>Equipment</i>	Description		
<i>Equipment power density</i>	Description		
<i>Equipment availability schedule</i>	Description		
<i>Lighting</i>	Description		
<i>Lighting power density</i>	Description		
<i>Lighting availability schedule</i>	Description		
<i>Dimming type</i>	Description		
<i>Illuminance target</i>	Description		

26.2.1 People

26.2.2 Occupancy density

26.2.3 Occupancy schedule

26.2.4 Equipment

26.2.5 Equipment power density

26.2.6 Equipment availability schedule

26.2.7 Lighting

26.2.8 Lighting power density

26.2.9 Lighting availability schedule

26.2.10 Dimming type

26.2.11 Illuminance target

26.3 Constructions

Setting	Description
<i>Facade</i>	
<i>Ground</i>	
<i>Partition</i>	
<i>Roof</i>	
<i>Slab</i>	
<i>Facade is adiabatic</i>	
<i>Ground is adiabatic</i>	
<i>Partition is adiabatic</i>	
<i>Roof is adiabatic</i>	
<i>Slab is adiabatic</i>	

26.3.1 Facade

26.3.2 Ground

26.3.3 Partition

26.3.4 Roof

26.3.5 Slab

26.3.6 Facade is adiabatic

When enabled, the facade will see no heat transfer to the surroundings.

26.3.7 Ground is adiabatic

When enabled, the ground plane will see no heat transfer to the surroundings.

26.3.8 Partition is adiabatic

When enabled, the partition will see no heat transfer to the surroundings.

26.3.9 Roof is adiabatic

When enabled, the roof will see no heat transfer to the surroundings.

26.3.10 Slab is adiabatic

When enabled, the slab will see no heat transfer to the surroundings.

26.4 Conditioning

Setting	Description	Units	Default Value
<i>Heating</i>			
<i>Heating setpoint</i>			
<i>Heating schedule</i>			
<i>Heating limit type</i>			
<i>Max heating capacity</i>			
<i>Max heating capacity</i>			
<i>Max heat flow</i>			
<i>Heating CoP</i>			
<i>Cooling setpoint</i>			
<i>Cooling schedule</i>			
<i>Cooling limit type</i>			
<i>Max cooling capacity</i>			
<i>Max cool flow</i>			
<i>Cooling CoP</i>			
<i>Mechanical ventilation</i>			
<i>Mechanical ventilation schedule</i>			
<i>Min fresh air per area</i>		m3/s-m2	0.0003
<i>Min fresh air per person</i>		m3/s-person	0.0025
<i>Economizer type</i>			NoEconomizer
<i>Heat recovery type</i>			None
<i>Heat recovery efficiency (latent)</i>			0.65
<i>Heat recovery efficiency (sensible)</i>			0.70

26.4.1 Heating

This checkbox field defines whether or not this component is available to operate. If this field is unchecked, the *Heating schedule* field will be forced to the generic schedule name *Off*.

26.4.2 Heating setpoint

The temperature below which zone heating is turned on. Umi controls the temperature in the zone using a ThermostatSetpoint:DualSetpoint object. This would be for heating and cooling thermostat where both a heating and cooling setpoint can be scheduled for any given time period. The setpoint can be scheduled and varied throughout the simulation for both heating and cooling.

Note: In this version of umi, the heating setpoint can only be scheduled as a constant.

26.4.3 Heating schedule

The name of a schedule (ref: Schedule) that denotes whether heating is available. A schedule value greater than 0 (usually 1 is used) indicates that heating and humidification are available. A value less than or equal to 0 (usually 0 is used) denotes that heating and humidification are not available. If blank, heating and humidification are always available.

Note: Schedule for when the heating system is available. Winter only enables the heating system when the outdoor temperature is less than 5 °C.

26.4.4 Heating limit type

The input must be either **LimitFlowRate**, **LimitCapacity**, **LimitFlowRateAndCapacity** or **NoLimit**. **LimitFlowRate** means that the heating supply air flow rate will be limited to the value specified in the input field *Max heat flow*. **LimitCapacity** means that the sensible heating capacity will be limited to the value specified in the *Max heating capacity* field. **LimitFlowRateAndCapacity** means that both flow rate and capacity will be limited. **NoLimit** (the default) means that there will not be any limit on the heating supply air flow rate or capacity and the subsequent two fields will be ignored.

26.4.5 Max heating capacity

The maximum allowed sensible heating capacity in Watts if Heating Limit is set to **LimitCapacity** or **LimitFlowRateAndCapacity**. If blank, there is no limit. If Heating Limit is set to **NoLimit** or **LimitFlowRate**, this field is ignored.

26.4.6 Max heat flow

The maximum heating supply air flow rate in cubic meters per second if heating limit is set to **LimitFlowRate** or **LimitFlowRateAndCapacity**. This field is ignored if heating limit is set to **NoLimit** or **LimitCapacity**. If blank, there is no limit.

26.4.7 Heating CoP

Efficiency of heating system. This value is used in deriving total heating energy use by dividing the heating load by the heating efficiency.

26.4.8 Cooling

This checkbox field defines whether or not this component is available to operate. If this field is unchecked, the *Cooling schedule* field will be forced to the generic schedule name *Off*.

26.4.9 Cooling setpoint

The temperature above which zone heating is turned on. Umi controls the temperature in the zone using a Thermostat-Setpoint: DualSetpoint object. This would be for heating and cooling thermostat where both a heating and cooling setpoint can be scheduled for any given time period.

Note: In this version of umi, the heating setpoint can only be scheduled as a constant.

26.4.10 Cooling schedule

The name of a schedule (ref: Schedule) that denotes whether cooling is available. A schedule value greater than 0 (usually 1 is used) indicates that cooling and dehumidification are available. A value less than or equal to 0 (usually 0 is used) denotes that cooling and dehumidification is not available. If blank, cooling and dehumidification are always available.

Note: Schedule for when the cooling system is available. Summer only enables the cooling system when the outdoor temperature is greater than 8 °C below the cooling setpoint.

Todo: to confirm

26.4.11 Cooling limit type

The input must be either **LimitFlowRate**, **LimitCapacity**, **LimitFlowRateAndCapacity** or **NoLimit**. LimitFlowrate means that the cooling supply air flow rate will be limited to the value specified *Max cool flow* field. LimitCapacity means that the total cooling capacity will be limited to the value specified in the *Max cooling capacity* field. LimitFlowRateAndCapacity means that both flow rate and capacity will be limited. NoLimit (the default) means that there will not be any limit on the cooling supply air flow rate or capacity and the subsequent two fields will be ignored.

26.4.12 Max cooling capacity

The maximum allowed total (sensible plus latent) cooling capacity in Watts per square meter if Cooling Limit is set to LimitCapacity or LimitFlowRateAndCapacity. If *Cooling limit type* is set to **NoLimit** or **LimitFlowRate**, this field is ignored.

26.4.13 Max cool flow

The maximum cooling supply air flow rate in cubic meters per second if Cooling Limit is set to LimitFlowRate or LimitFlowRateAndCapacity. This field is ignored if cooling limit is set to NoLimit or LimitCapacity. If blank, there is no limit. If Cooling Limit is set to NoLimit, this field is ignored. This field is required if Outdoor Air Control Type is TemperatureEconomizer in order to establish an upper limit on outdoor air flow when the economizer is active.

26.4.14 Cooling CoP

Performance factor of cooling system. This value is used in deriving the total cooling energy use by dividing the cooling load by the COP.

26.4.15 Mechanical ventilation

Mechanical Ventilation affects building energy consumption by forcing Fresh Air into the zones, air that needs to be treated. If **on**, an outdoor air quantity for use by the model will be calculated.

26.4.16 Mechanical ventilation schedule

This field is the reference to the schedule that defines how outdoor air requirements change over time. The schedule values are multiplied by the outdoor air flow rate defined by the next two fields. The schedule values must be between 0 and 1, inclusive. For example, if users specify the same schedule as the OccupancySchedule, this means that the current occupancy level will be used when computing the minimum outdoor air flow rate based on the next two fields.

26.4.17 Min fresh air per area

The design outdoor air volume flow rate per square meter of floor area (units are m³/s-m²). This input is used if Outdoor Air Method is Flow/Area, Sum or Maximum. The default value for this field is 0.

Note: Umi uses by default the *Sum* method which means that the flows calculated from the fields *Min fresh air per person*, *Min fresh air per area*, Outdoor Air Flow per Zone, and Air Changes per Hour (using the associated conversions to m³/s for each field) will be added to obtain the zone outdoor air flow rate.

26.4.18 Min fresh air per person

The design outdoor air volume flow rate per person for this zone in cubic meters per second per person. The default is 0.00944 (20 cfm per person). An outdoor air flow rate is calculated based on the total number of people for all People statements assigned to the zone. Occupancy schedule values are not applied during sizing calculations and are applied during the remainder of the simulation. This input is used if Outdoor Air Method is one of Outdoor Air Flow per Person, Sum, or Maximum.

26.4.19 Economizer type

This field specifies if there is an outdoor air economizer. The choices are: NoEconomizer, DifferentialDryBulb, or DifferentialEnthalpy. The default is NoEconomizer. DifferentialDryBulb and DifferentialEnthalpy mean that the economizer will increase the outdoor air flow rate above the minimum outdoor air flow (see fields Design Specification Outdoor Air Object Name and Demand Controlled Ventilation Type) when there is a cooling load and the outdoor air temperature or enthalpy is below the zone exhaust air temperature or enthalpy. The DifferentialDryBulb and DifferentialEnthalpy options require that the *Max cool flow* be specified which will be used as the limit for maximum outdoor air flow rate.

26.4.20 Heat recovery type

Select from None, Sensible, or Enthalpy. None means that there is no heat recovery. Sensible means that there is sensible heat recovery whenever the zone exhaust air temperature is more favorable than the outdoor air temperature. Enthalpy means that there is latent and sensible heat recovery whenever the zone exhaust air enthalpy is more favorable than the outdoor air enthalpy. The default is None.

26.4.21 Heat recovery efficiency (latent)

The latent heat recovery effectiveness, where effectiveness is defined as the change in supply humidity ratio divided by the difference in entering supply and relief air humidity ratios. The default is 0.65.

26.4.22 Heat recovery efficiency (sensible)

The sensible heat recovery effectiveness, where effectiveness is defined as the change in supply temperature divided by the difference in entering supply and relief air temperatures. The default is 0.70.

26.5 Ventilation

Setting	Description	Unit	Default Value
<i>Infiltration</i>	Description		
<i>Infiltration rate</i>	Description		
<i>Natural ventilation</i>	Description		
<i>Natural ventilation minimum outdoor air temperature</i>	Description		
<i>Natural ventilation maximum outdoor air temperature</i>	Description		
<i>Natural ventilation maximum relative humidity</i>	Description		
<i>Natural ventilation schedule</i>	Description		
<i>Natural ventilation zone temperature setpoint</i>	Description		
<i>Scheduled ventilation</i>	Description		
<i>Scheduled ventilation ACH</i>	Description		
<i>Scheduled ventilation schedule</i>	Description		
<i>Scheduled ventilation setpoint</i>	Description		
<i>Buoyancy</i>	Description		
<i>Wind</i>	Description		
<i>Afn</i>	Description		

26.5.1 Infiltration

This field is the name of the schedule that modifies the maximum design volume flow rate (see Design Flow Rate Calculation Method field and related subsequent fields). This fraction between 0.0 and 1.0 is noted as in the above equation.

26.5.2 Infiltration rate

26.5.3 Natural ventilation

Natural ventilation is assumed to be air movement/exchange as a result of openings in the building façade and will not consume any fan energy. For this model, the ventilation air flow rate is a function of wind speed and thermal stack effect, along with the area of the opening being modeled. This object can be used alone or in combination with *Scheduled ventilation*. This model is intended for simplified ventilation calculations as opposed to the more detailed ventilation investigations that can be performed with Energy+’s AirflowNetwork model. Using the “Wind and Stack with Open Area” model, the natural ventilation flow rate can be controlled by a multiplier fraction schedule applied to the user-defined *Operable area* and through the specification of minimum, maximum and delta temperatures. The temperatures are taken as single constant values for the entire simulation.

Note: Note that if *Natural ventilation* is used in combination with *Scheduled ventilation*, the resulting ventilation rate for the zone will simply be the summation of the flow rates specified by the ventilation objects.

26.5.4 Natural ventilation minimum outdoor air temperature

This is the outdoor temperature (in Celsius) below which ventilation is shut off. The minimum value for this field is -100.0°C and the maximum value is 100.0°C. The default value is -100.0°C if the field is left blank. This lower temperature limit is intended to avoid overcooling a space, which could result in a heating load.

26.5.5 Natural ventilation maximum outdoor air temperature

This is the outdoor temperature (in Celsius) above which ventilation is shut off. The minimum value for this field is -100.0°C and the maximum value is 100.0°C. The default value is 100.0°C if the field is left blank. This upper temperature limit is intended to avoid overheating a space, which could result in a cooling load.

26.5.6 Natural ventilation maximum relative humidity

Defines the dehumidifying relative humidity setpoint, expressed as a percentage (0-100), for each timestep of the simulation.

Note: The default value for the Minimum Relative Humidity is 20C.

26.5.7 Natural ventilation schedule

This field is the name of the schedule (*Day | Week | Year*) which ultimately modifies the Opening Area value (see previous field). In its current implementation, any value greater than 0 will consider, value above The schedule values must be any positive number between 0 and 1 as a fraction.

26.5.8 Natural ventilation zone temperature setpoint

26.5.9 Scheduled ventilation

Ventilation is the purposeful flow of air from the outdoor environment directly into a thermal zone in order to provide some amount of non-mechanical cooling. Scheduled Ventilation is intended to model “simple” ventilation as opposed to the more detailed ventilation investigations that can be performed with the AirflowNetwork model or with air systems that have outdoor air mixers. Zone ventilation can be controlled by a *Scheduled ventilation schedule* and through the specification of *Scheduled ventilation setpoint*, maximum and delta temperatures as described below. Note that maximum and delta temperatures are not supported yet in the Template Editor.

Note: Natural ventilation is assumed as a result of openings in the building façade and will not consume any fan energy. Values for fan pressure and efficiency for natural ventilation are ignored. The conditions of the air entering the space are assumed to be equivalent to outside air conditions.

26.5.10 Scheduled ventilation ACH

This factor, along with the Zone Volume, will be used to determine the Design Flow Rate.

26.5.11 Scheduled ventilation schedule

This field is the name of the schedule (*Schedules Tab*) that modifies the maximum design volume flow rate. This fraction is between 0.0 and 1.0.

26.5.12 Scheduled ventilation setpoint

This is the indoor temperature (in Celsius) below which ventilation is shutoff. The minimum value for this field is -100.0°C and the maximum value is 100.0°C. The default value is -100.0°C if the field is left blank. This lower temperature limit is intended to avoid overcooling a space and thus result in a heating load. For example, if the user specifies a minimum temperature of 20°C, ventilation is assumed to be available if the zone air temperature is above 20°C. If the zone air temperature drops below 20°C, then ventilation is automatically turned off.

Note: Since the Template Editor does not support changing the values of the Maximum Indoor Temperature, the value will be left blank meaning that the default value is 100.0°C.

26.5.13 Buoyancy

26.5.14 Wind

26.5.15 Afn

26.6 Domestic Hot Water

Setting	Description	Unit	Default Value
<i>Enabled</i>	Description		
<i>Scheduled</i>	Description		
<i>Supply Temperature</i>	Description		
<i>Inlet Temperature</i>	Description		
<i>Flow rate</i>	Description		

26.6.1 Enabled

26.6.2 Scheduled

26.6.3 Supply Temperature

26.6.4 Inlet Temperature

26.6.5 Flow rate

26.7 Windows

Setting	Description	Unit	Default Value
<i>Type</i>	Description		
<i>Construction</i>	Description		
<i>Operable area</i>	Description		
<i>Shading is used</i>	Description		
<i>Shading system availability schedule</i>	Description		
<i>Shading system set-point</i>	Description		
<i>Shading system transmittance</i>	Description		
<i>Shading system type</i>	Description		
<i>Zone mixing</i>	Description		
<i>Zone mixing availability schedule</i>	Description		
<i>Zone mixing delta temperature</i>	Description		
<i>Zone mixing flow rate</i>	Description		
<i>Virtual partition</i>	Description		
<i>Airflow network discharge coefficient</i>	Description		
<i>Airflow network temperature set-point</i>	Description		
<i>Airflow network window availability</i>	Description		

26.7.1 Type

26.7.2 Construction

26.7.3 Operable area

26.7.4 Shading is used

26.7.5 Shading system availability schedule

26.7.6 Shading system setpoint

26.7.7 Shading system transmittance

26.7.8 Shading system type

26.7.9 Zone mixing

ZoneMixing is intended to allow simplified treatment of air exchange between zones. Note that this statement only affects the energy balance of the “receiving” zone and that this statement will not produce any effect on the “source” zone. More advanced mixing calculations are possible using the AirflowNetwork model for multi-zone airflow with or without HVAC system operation.

26.7.10 Zone mixing availability schedule

This field is the name of the schedule (*Schedules Tab*) that modifies the maximum design volume flow rate parameter (see next field). This fraction between 0.0 and 1.0 modifies the design level parameter.

26.7.11 Zone mixing delta temperature

This number controls when mixing air from the source zone is sent to the receiving zone. This parameter is a temperature and is expressed in units of Celsius. If this field is positive, the temperature of the zone from which the air is being drawn (source zone) must be “Delta Temperature” warmer than the receiving zone air or else no mixing occurs. If this field is negative, the temperature of the source zone must be “Delta Temperature” cooler than the receiving zone air or else no mixing occurs. If this parameter is zero, mixing occurs regardless of the relative zone temperatures.

26.7.12 Zone mixing flow rate

This factor (m3/s-m2) is used, along with the Zone Area to determine the maximum Design Volume Flow Rate as described in the Design Volume Flow Rate field.

26.7.13 Virtual partition

26.7.14 Airflow network discharge coefficient

26.7.15 Airflow network temperature setpoint

26.7.16 Airflow network window availability

Building Templates Tab

This section provide details on the Building Templates Tab

27.1 Building Template components description

27.1.1 Core Zone Type

Todo: Section to be written

27.1.2 Perimeter Zone Type

Todo: Section to be written

27.1.3 Structure

Todo: Section to be written

27.1.4 Partition ratio

Todo: Section to be written

27.1.5 Lifespan

Todo: Section to be written

27.1.6 Windows

Todo: Section to be written

Setting	Description
<i>Core Zone Type</i>	
<i>Perimeter Zone Type</i>	
<i>Structure</i>	
<i>Partition ratio</i>	
<i>Lifespan</i>	
<i>Windows</i>	

CHAPTER 28

Indices and tables

- `genindex`
- `modindex`
- `search`

A

Afn, 101
Airflow network discharge coefficient, 103
Airflow network temperature setpoint, 103
Airflow network window availability, 103

B

Back-side IR Emissivity, 78
Back-side Solar Reflectance, 79
Back-side Visible Reflectance, 79
Buoyancy, 100

C

Conditioning, 90
Conductivity, 75, 77
Construction, 103
Constructions, 90
Cooling, 95
Cooling CoP, 96
Cooling limit type, 96
Cooling schedule, 96
Cooling setpoint, 95
Core Zone Type, 105
Cost, 75, 77

D

Daylight Mesh Resolution, 90
Daylight Workplane Height, 90
Density, 75, 77
Dimming type, 92
Dirt Factor, 78
Domestic Hot Water, 90

E

Economizer type, 97
Embodied Carbon, 75, 77
Embodied Energy, 75, 78

Enabled, 101
Equipment, 92
Equipment availability schedule, 92
Equipment power density, 92

F

Facade, 92, 93
Facade is adiabatic, 93
Flow rate, 102
Front-side IR Emissivity, 79
Front-side Solar Reflectance, 79
Front-side Visible Reflectance, 79

G

Ground, 93

H

Heat recovery efficiency (*latent*), 97
Heat recovery efficiency (*sensible*), 98
Heat recovery type, 97
Heating, 94
Heating CoP, 95
Heating limit type, 95
Heating schedule, 95
Heating setpoint, 94

I

Illuminance target, 92
Infiltration, 98
Infiltration rate, 98
Inlet Temperature, 102
Internal Mass Construction, 90
Internal Mass Exposed Floor Area, 91
IR Transmittance, 79

L

Lifespan, 105
Lighting, 92
Lighting availability schedule, 92

Lighting power density, [92](#)
Loads, [90](#), [91](#)

M

Max cool flow, [96](#)
Max cooling capacity, [96](#)
Max heat flow, [95](#)
Max heating capacity, [95](#)
Mechanical ventilation, [96](#)
Mechanical ventilation schedule, [97](#)
Min fresh air per area, [97](#)
Min fresh air per person, [97](#)
Moisture Diffusion Resistance, [76](#)

N

Nat vent min outdoor air temp, [99](#)
Natural ventilation, [99](#)
Natural ventilation maximum outdoor
air temperature, [99](#)
Natural ventilation maximum relative
humidity, [99](#)
Natural ventilation schedule, [99](#)
Natural ventilation zone temperature
setpoint, [99](#)

O

Occupancy density, [92](#)
Occupancy schedule, [92](#)
Operable area, [103](#)

P

Partition, [93](#)
Partition is adiabatic, [93](#)
Partition Ratio, [105](#)
People, [91](#)
Perimeter Zone Type, [105](#)

R

Reflectance, [79](#)
Roof, [93](#)
Roof is adiabatic, [93](#)
Roughness, [76](#)

S

Schedule, [85](#)
Scheduled, [102](#)
Scheduled ventilation, [100](#)
Scheduled ventilation ACH, [100](#)
Scheduled ventilation schedule, [100](#)
Scheduled ventilation setpoint, [100](#)
Shading is used, [103](#)
Shading system availability schedule,
[103](#)
Shading system setpoint, [103](#)

Shading system transmittance, [103](#)
Shading system type, [103](#)
Slab, [93](#)
Slab is adiabatic, [93](#)
Solar Absorptance, [76](#)
Solar Reflectance, [79](#)
Solar Transmittance, [79](#)
Specific Heat, [77](#)
Structure, [105](#)
Substitution Rate Pattern, [76](#), [78](#)
Substitution Timestep, [76](#), [78](#)
Supply Temperature, [102](#)

T

Template Library Editor, [21](#)
Thermal Emittance, [77](#)
Transportation Carbon, [76](#), [78](#)
Transportation Distance, [76](#), [78](#)
Transportation Energy, [76](#), [78](#)
Type, [102](#)

V

Ventilation, [90](#)
Virtual partition, [103](#)
Visible Absorptance, [77](#)
Visible Reflectance, [79](#)
Visible Transmittance, [79](#)

W

Wind, [101](#)
Windows, [106](#)

Z

Zone mixing, [103](#)
Zone mixing availability schedule, [103](#)
Zone mixing delta temperature, [103](#)
Zone mixing flow rate, [103](#)