
PHES Documentation

Release 0.1

Felix Ongati

May 10, 2016

1	Table of Contents	3
1.1	Introduction	3
1.2	List of Abbreviations and Terminologies	3
1.3	Getting Started	4
1.4	Datasets	4
1.5	Data Entry	5
1.6	Analysis and Reports	14
1.7	Clearing Cache	17
1.8	Appendix 1: References	18

This user documentation covers the background and purpose of PHES together with instructions and explanations of how to perform **data entry, reporting** and other topics related to the **usage of the software**. This section explains some of the conventions which are used throughout the document. PHES is a browser-based application. In many cases, screenshots have been included for enhanced clarity. Shortcuts to various functionalities are displayed such as “Apps -> Data Entry”. The “->” character indicates that you should choose “Apps” and then click on “Data Entry” in the menu which appears through the browser.

Table of Contents

1.1 Introduction

PHES is an open source solution made to support the **PEPFAR** system on similar partner reporting system based on the **DHIS2** which is currently being used for health reporting in Kenya. Population Health and Environment System (PHES) is an implementation of the Kenya Program Monitoring and Evaluation System (KePMS) on a DHIS2-like platform. It was mainly designed for reporting **Non-HIV PEPFAR** program data. Unlike KePMS, this platform is web based and users can access a common instance all over the country. The Implementing agencies can view aggregated data for all their partners, per partner and per site. **PEPFAR** can view data aggregated per site, per partner and per Agency. **PHES** also extends the robust features of DHIS2 because it is based on the DHIS2 platform

1.2 List of Abbreviations and Terminologies

1.2.1 Abbreviations

- **KePMS** - Kenya HIV/AIDS Program Monitoring System
- **PEPFAR** - President's Emergency Plan for AIDS Relief
- **DHIS2** - District Health Information System Version 2
- **JPRP** - Joint Partner Reporting Portal
- **PHES** - Partner Health Environmental System
- **IPs** - Implementing Partners
- **MoH** - Ministry of Health
- **IPSL** - Implementing Partners Support List

1.2.2 Terminologies

- **Implementing partner** - an organization working on behalf of an agency to perform services
- **Funding agency** - an agency providing support to partners

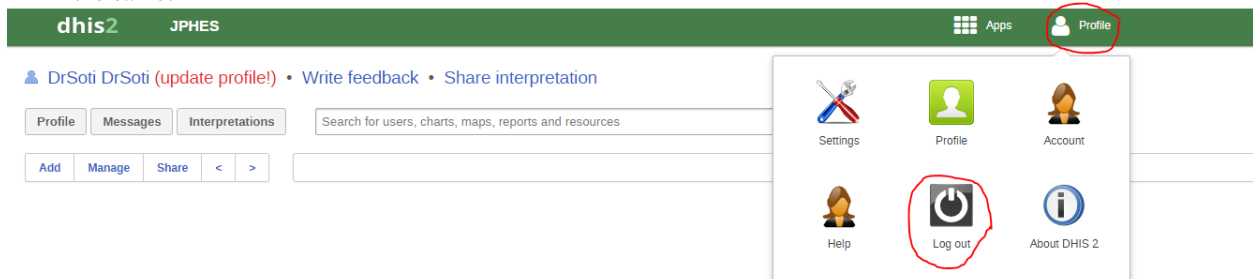
1.3 Getting Started

1.3.1 System Log in

You are required to provide your username and password in order to access the system. Figure 1 below is a screenshot of the start page/login page .Once logged in, the user can see their dashboard because this is the default landing page.
.. image:: _img/phes-login.png

System Log Out On the far right of the top bar on the system, there is **Profile** menu. When you hover your mouse pointer on the menu,

a drop down appears that has a log out button. Click on the button to signout. Below is a screenshot of the same:



1.4 Datasets

PHES contains the following datasets, categorized here by their level of reporting

1.4.1 National Level

- Family Planning and Reproductive Health Target
- Family Planning and Reproductive Health Narrative
- Malaria Narrative
- Malaria Target
- Maternal and Child Health Narrative
- Maternal and Child Health Target
- National Performance
- Nutrition Narrative
- Nutrition Target

- WASH Narrative
- Wash Target
- Training

1.4.2 County Level

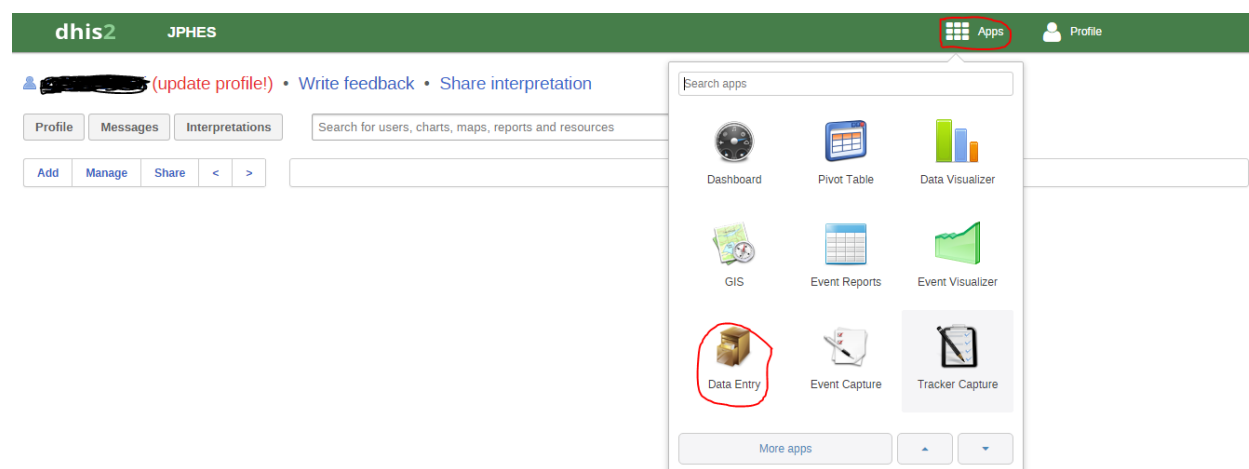
- County Performance
- Family Planning and Reproductive Health Target
- Family Planning and Reproductive Health Narrative
- Malaria Narrative
- Malaria Target
- Maternal and Child Health Narrative
- Maternal and Child Health Target
- Nutrition Narrative
- Nutrition Target
- WASH Narrative
- Wash Target
- Training

1.4.3 Facility Level

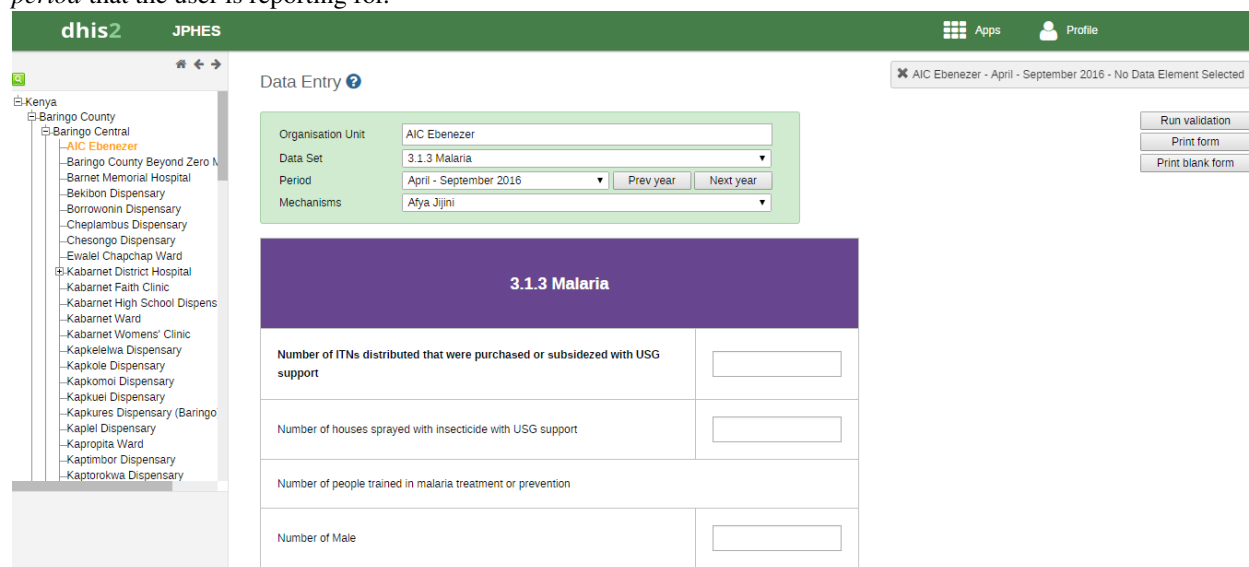
- Malaria
- Family Planning and Reproductive Health Performance
- Maternal and Child Health Performance
- Nutrition Performance

1.5 Data Entry

The PHES data entry module is designed in such a way that an Implementing Partner can only enter their data. PHES datasets were migrated from KePMS, retaining dataset names and look and feel as were in KePMS. After logging into the system, hover mouse pointer/click on the *Apps* icon on the far left as shown on the figure below. On the dropdown that appears, click on *Data Entry* icon.



This navigates to the data entry page, as shown on the figure below. For data entry forms to appear, you will be required to first select an organization unit/facility you are reporting for on the left panel, the dataset, reporting period and the implementing partner you are reporting for, which comes up after selecting the *organization unit*, *Dataset* and *period* that the user is reporting for.



1.5.1 Data Entry Forms

Below are sample screenshots for different data entry forms;

1.5.2 Facility Level

Facility level datasets include Malaria, Family Planning and Reproductive Health Performance, Maternal and Child Health Performance and Nutrition Performance.

Malaria

dhis2

JPHES

Apps

Profile

Kenya

Baringo County

Baringo Central

AIC Ebenezer

Baringo County Beyond Zero M

Barnet Memorial Hospital

Bekibon Dispensary

Borrowonin Dispensary

Cheplambus Dispensary

Chesongo Dispensary

Ewalel Chapchap Ward

Kabarnet District Hospital

Kabarnet Faith Clinic

Kabarnet High School Dispens

Kabarnet Ward

Kabarnet Womens' Clinic

Kapkelelwa Dispensary

Kapkelelwa Dispensary

Kapkomol Dispensary

Kapkuels Dispensary (Baringo)

Kaplel Dispensary

Kapropita Ward

Kaptimbor Dispensary

Kaptorokwa Dispensary

Organisation Unit

AIC Ebenezer

Data Set

3.1.3 Malaria

Period

October 2016 - March 2017

Prev year

Next year

Mechanisms

Health Communication Marketing (Follow on)

AIC Ebenezer - October 2016 - March 2017 - No Data Element Selected

Print form

Print blank form

3.1.3 Malaria

Number of ITNs distributed that were purchased or subsidized with USG support	
Number of houses sprayed with insecticide with USG support	
Number of people trained in malaria treatment or prevention	
Number of Male	
Number of Female	

Family Planning and Reproductive Health

dhis2

JPHES

Apps

Profile

Kenya

Baringo County

Baringo Central

AIC Ebenezer

Baringo County Beyond Zero M

Barnet Memorial Hospital

Bekibon Dispensary

Borrowonin Dispensary

Cheplambus Dispensary

Chesongo Dispensary

Ewalel Chapchap Ward

Kabarnet District Hospital

Kabarnet Faith Clinic

Kabarnet High School Dispens

Kabarnet Ward

Kabarnet Womens' Clinic

Kapkelelwa Dispensary

Kapkelelwa Dispensary

Kapkomol Dispensary

Kapkuels Dispensary (Baringo)

Kaplel Dispensary

Kapropita Ward

Kaptimbor Dispensary

Kaptorokwa Dispensary

Organisation Unit

AIC Ebenezer

Data Set

Family Planning and Reproductive Health Performance

Period

April - September 2016

Prev year

Next year

Mechanisms

Health Communication Marketing (Follow on)

AIC Ebenezer - April - September 2016 - No Data Element Selected

Print form

Print blank form

Family Planning and Reproductive Health Performance

Indicators	Results
Numerator: Number of service delivery points (SDP) that experience stock out at any time during the reporting period of a contraceptive method that the SDP is expected to provide	
Denominator: Number of service delivery sites providing family planning (FP) counselling and/or services	
Standard: 3.1.7.1-4 Number of additional USG-assisted community health workers (CHWs) providing family planning (FP) information	

Maternal and Child Health Performance

dhis2

JPHES

Apps

Profile

Kenya

Baringo County

Baringo Central

AIC Ebenezer

Baringo County Beyond Zero M

Barnet Memorial Hospital

Bekibon Dispensary

Borrowonin Dispensary

Cheplambus Dispensary

Chesongo Dispensary

Ewalel Chapchap Ward

Kabarnet District Hospital

Kabarnet Faith Clinic

Kabarnet High School Dispens

Kabarnet Ward

Kabarnet Womens' Clinic

Kapkelelwa Dispensary

Kapkelelwa Dispensary

Kapkomol Dispensary

Kapkuels Dispensary (Baringo)

Kaplel Dispensary

Kapropita Ward

Kaptimbor Dispensary

Kaptorokwa Dispensary

Organisation Unit

AIC Ebenezer

Data Set

Maternal and Child Health Performance

Period

October 2015 - March 2016

Prev year

Next year

Mechanisms

Health Communication Marketing (Follow on)

AIC Ebenezer - October 2015 - March 2016 - No Data Element Selected

Print form

Print blank form

Maternal and Child Health Performance

Indicators	Result
Custom: Number of women who received at least 4 ANC visits during the latest pregnancy during a specified time period (year)	
Custom: Number of births in a given year attended by a skilled birth attendant (SBA) such as a doctor, nurse, or midwife	
Custom: Number of women who had a live birth in the same specified	
Custom: Number of children 12-23 months of age who received measles vaccine by the time they were 12 months of age:	

dhis2 JPHES Apps Profile

Kenya

- Baringo County
- Bomet County
- Bungoma County
- Busia County
- Elgeyo-Marakwet County
- Embu County
- Emutsalwa Community Health Unit
- Garissa County
- Homa Bay County
- Isiolo County
- Kajiado County
- Kakamega County
- Kericho County
- Kiambu County
- Kilifi County
- Kirinyaga County
- Kisii County
- Kisumu County
- Kitui County
- Kwale County
- Lakipia County
- Lamu County
- Machakos County
- Makueni County
- Mandera County

Organisation Unit: Baringo County

Data Set: County Performance

Period: October 2015 - March 2016

Mechanisms: Health Communication Marketing (Follow on)

Baringo County - October 2015 - March 2016 - No Data Element Selected

Nutrition indicators MCH indicators FP_RH indicators Malaria indicators

Nutrition Performance

Standard: 3.1.9.1 Number of people trained in child health care and nutrition through USG-supported health area programs

Health Care Worker - Number of men:

Health Care Worker - Number of women:

Community health workers- Number of Men:

Family Planning and Reproductive Health Narrative

Used to enter narrative data for FPRH

dhis2 JPHES Apps Profile

Kenya

- Baringo County
- Bomet County
- Bungoma County
- Busia County
- Elgeyo-Marakwet County
- Embu County
- Emutsalwa Community Health Unit
- Garissa County
- Homa Bay County
- Isiolo County
- Kajiado County
- Kakamega County
- Kericho County
- Kiambu County
- Kilifi County
- Kirinyaga County
- Kisii County
- Kisumu County
- Kitui County
- Kwale County
- Lakipia County
- Lamu County
- Machakos County
- Makueni County
- Mandera County

Organisation Unit: Baringo County

Data Set: Family Planning and Reproductive Health Narrative

Period: April - September 2016

Mechanisms: Health Communication Marketing (Follow on)

Baringo County - April - September 2016 - No Data Element Selected

Family Planning and Reproductive Health Narrative

Indicators	Narrative
Standard: 3.1.7.1-1 Couple-years of protection (CYP) in USG-supported programs	<input type="text"/>
Standard: 3.1.7.1.2 Percent of service delivery points (SDP) that experience stock out at any time during the reporting period of a contraceptive method that the SDP is expected to provide	<input type="text"/>
Numerator: Number of service delivery sites providing family planning(FP) counselling and/or services	<input type="text"/>
Denominator: Number of service delivery points (SDP) that experience stock out at any time during the reporting period of a contraceptive method that the SDP is expected to provide	<input type="text"/>

Family Planning and Reproductive Health Target

dhis2 JPHES Apps Profile

Organisation Unit: Baringo County
 Data Set: Family Planning and Reproductive Health Target
 Period: 2016 Prev year Next year
 Mechanisms: Health Communication Marketing (Follow on)

Baringo County - 2016 - No Data Element Selected
 Run validation
 Print blank form

Family Planning and Reproductive Health Target

Indicators	Annual Target
Standard: 3.1.7.1-1 Couple-years of protection (CYP) in USG-supported programs	
Standard: 3.1.7.1-2 Percent of service delivery points (SDP) that experience stock out at any time during the reporting period of a contraceptive method that the SDP is expected to provide	-
Numerator: Number of service delivery points (SDP) that experience stock out at any time during the reporting period of a contraceptive method that the SDP is expected to provide	
Denominator: Number of service delivery sites providing family planning (FP) counselling and/or services	

Malaria Narrative

Used to enter narrative data for Malaria

dhis2 JPHES Apps Profile

Data Entry

Organisation Unit: Baringo County
 Data Set: Malaria Narrative
 Period: April - September 2016 Prev year Next year
 Mechanisms: Health Communication Marketing (Follow on)

Baringo County - April - September 2016 - No Data Element Selected
 Run validation
 Print form
 Print blank form

Malaria Narrative

3.1.3.1-4	Number of artemisinin-based combination therapy (ACT) treatments purchased in any fiscal year with USG funds that were distributed in this reported fiscal year	
3.1.3.1-8	Number of rapid diagnostic tests (RDTs) purchased in any fiscal year with USG funds that were distributed in this reported fiscal year	
3.1.3.2-3	Number of insecticide treated nets (ITNs) purchased in any fiscal year with USG funds that were distributed in this reported fiscal year. Through campaigns	

Malaria Target

Used to enter target data for Malaria

dhis2 JPHEs Apps Profile

Organisation Unit: Baringo County
 Data Set: Malaria Target
 Period: 2016 Prev year Next year
 Mechanisms: Health Communication Marketing (Follow on)

✖ Baringo County - 2016 - No Data Element Selected
 Print form
 Print blank form

Malaria Target

3.1.3.1-4	Number of artemisinin-based combination therapy (ACT) treatments purchased in any fiscal year with USG funds that were distributed in this reported fiscal year	
3.1.3.1-8	Number of rapid diagnostic tests (RDTs) purchased in any fiscal year with USG funds that were distributed in this reported fiscal year	
3.1.3.2-3	Number of insecticide treated nets (ITNs) purchased in any fiscal year with USG funds that were distributed in this reported fiscal year.	0
	Through campaigns	
	Through health facilities	
	Through the private/commercial sector	

Maternal and Child Health Narrative

Used to enter MCH narrative data.

dhis2 JPHEs Apps Profile

Organisation Unit: Baringo County
 Data Set: Maternal and Child Health Narrative
 Period: April - September 2016 Prev year Next year
 Mechanisms: Health Communication Marketing (Follow on)

✖ Baringo County - April - September 2016 - No Data Element Selected
 Print form
 Print blank form

Maternal and Child Health Narrative

Indicator	Narrative
Custom: Number of births in a given year attended by a skilled birth attendant (SBA) such as a doctor, nurse, or midwife	
Custom: Number of women who had a live birth in the same specified	
Custom: Number of children age 12-23 months of age who received third does of DPT (Diphtheria, Pertussis, Tetanus) vaccine:	
Custom: Number of children who have received the third dose of pneumococcal conjugate vaccine by 12 months of age:	

Maternal and Child Health Target

Used to enter MCH target data.

dhis2 JPHES Apps Profile

Kenya
 Baringo County
 Bomet County
 Bungoma County
 Busia County
 Elgeyo-Marakwet County
 Embu County
 Emutsalwa Community Health Unit
 Garissa County
 Homa Bay County
 Isiolo County
 Kajiado County
 Kakamega County
 Kericho County
 Kiambu County
 Kilifi County
 Kirinyaga County
 Kisumu County
 Kitui County
 Kwale County
 Laikipia County
 Lamu County
 Machakos County
 Makueni County

Organisation Unit: Baringo County
 Data Set: Maternal and Child Health Target
 Period: 2015 (Prev year, Next year)
 Mechanisms: Health Communication Marketing (Follow on)

✖ Baringo County - 2015 - No Data Element Selected
 Print form
 Print blank form

Maternal and Child Health Target

Indicators	Annual Target
Custom: Number of births in a given year attended by a skilled birth attendant (SBA) such as a doctor, nurse, or midwife	
Custom: Number of women who had a live birth in the same specified	
Custom: Number of children 12-23 months of age who received measles vaccine by the time they were 12 months of age:	
Custom: Number of children age 12-23 months of age who received third does of DPT (Diphtheria, Pertussis, Tetanus) vaccine.	
Custom: Number of children who have received the third dose of pneumococcal conjugate vaccine by 12 months of age.	

Nutrition Narrative

Used to enter Nutrition narrative data.

dhis2 JPHES Apps Profile

Kenya
 Baringo County
 Bomet County
 Bungoma County
 Busia County
 Elgeyo-Marakwet County
 Embu County
 Emutsalwa Community Health Unit
 Garissa County
 Homa Bay County
 Isiolo County
 Kajiado County
 Kakamega County
 Kericho County
 Kiambu County
 Kilifi County
 Kirinyaga County
 Kisumu County
 Kitui County
 Kwale County
 Laikipia County
 Lamu County
 Machakos County
 Makueni County

Organisation Unit: Baringo County
 Data Set: Nutrition Narrative
 Period: April - September 2016 (Prev year, Next year)
 Mechanisms: Health Communication Marketing (Follow on)

✖ Baringo County - April - September 2016 - No Data Element Selected
 Print form
 Print blank form

Nutrition -Narrative

Indicator	Narrative
Standard: 3.1.9-1 Number of people trained in child health care and nutrition through USG-supported health area programs	
Number of men:	
Number of women:	
Health Care Workers	

Nutrition Target

Used to enter Nutrition target data.

dhis2 JPHES Apps Profile

✖ Baringo County - 2016 - No Data Element Selected

Print form
Print blank form

Organisation Unit: Baringo County
Data Set: Nutrition Target
Period: 2016 (Prev year, Next year)
Mechanisms: Health Communication Marketing (Follow on)

Nutrition Target

Standard: 3.1.9-1 Number of people trained in child health care and nutrition through USG-supported health area programs

0

Health Care Workers (Number of men)

Health Care Workers (Number of women)

Community health workers (Number of men)

Training

Holds data for training dataset

dhis2 JPHES Apps Profile

✖ Baringo County - October 2015 - March 2016 - No Data Element Selected

Print form
Print blank form

Organisation Unit: Baringo County
Data Set: Training
Period: October 2015 - March 2016 (Prev year, Next year)
Mechanisms: Health Communication Marketing (Follow on)

FPRH, Nutrition and WASH **HRH indicators**

Training Indicator	Male	Female	Days Trained	Start Date	End date	Cadre Trained
Number of people trained in malaria treatment or prevention						
Number of people trained in Malaria monitoring and evaluation with USG assistance						
Number of people trained in maternal and/or newborn health and nutrition care through USG-supported program						
Number of people trained in child health care and nutrition through USG-supported health area programs						
Number of people trained in Maternal and Child Health						

WASH Narrative

Organisation Unit: Baringo County

Data Set: WASH Narrative

Period: October 2015 - March 2016

Mechanisms: Health Communication Marketing (Follow on)

WASH Narrative

Indicator	Narrative
Standard: 3.1.8.1.2 Number of people in target areas gaining access to improved drinking water supply	
Males	
Females	
Standard: 3.1.8.2.2 Number of people in target areas gaining access to improved sanitation facilities as a result of USG assistance (NOTE - SHOULD NOT INCLUDE NUMBERS FROM SCHOOLS AND HEALTH FACILITIES)	
Males	

WASH Target

Organisation Unit: Baringo County

Data Set: WASH Target

Period: 2016

Mechanisms: Health Communication Marketing (Follow on)

WASH Target

Indicator	Target
Standard: 3.1.8.1.2 Number of people in target areas gaining access to improved drinking water supply	0
Males	
Females	
Standard: 3.1.8.2.2 Number of people in target areas gaining access to improved sanitation facilities as a result of USG assistance (NOTE - SHOULD NOT INCLUDE NUMBERS FROM SCHOOLS AND HEALTH FACILITIES)	0

1.6 Analysis and Reports

1.6.1 Pivot Table Analysis

The pivot table app enables users to create pivot tables, using all available data dimensions in PHES. A pivot table is a dynamic tool for data analysis which lets you quickly summarize and arrange data according to its dimensions. Examples of data dimensions in PHES are data dimension itself (e.g data elements, indicators and events), periods (representing the time period for which the data represents) and the organisational hierarchy (representing the geographical location of the data). From these dimensions you can freely select dimension items to include in the pivot table. Additional dimensions can be created in PHES, using the group set functionality, to allow for different aggregation pathways, such as aggregation by “Partner” or facility type. A pivot table can arrange data dimensions on

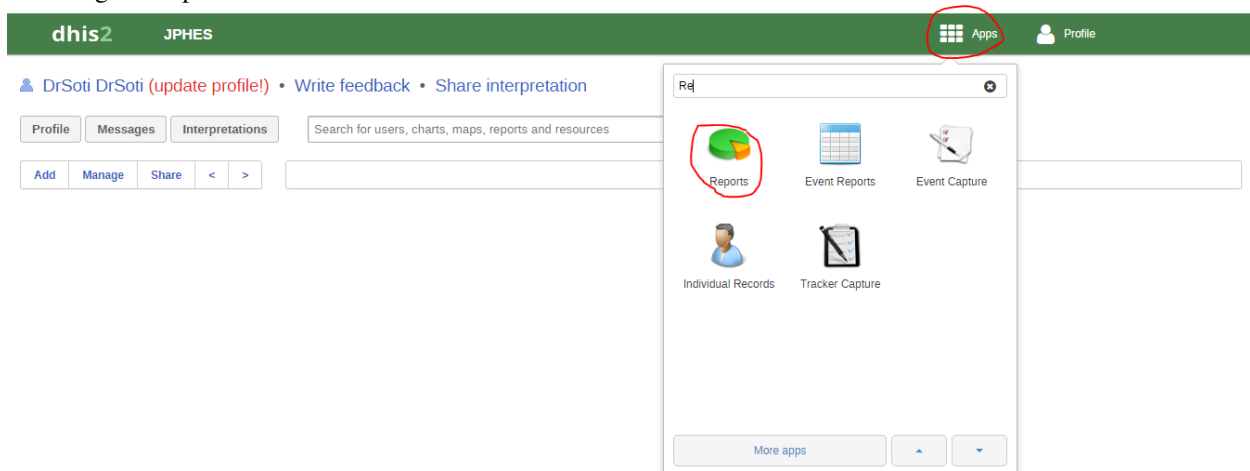
columns, rows, and as filters. When you place a data dimension on columns, the pivot table will display one column per dimension item. If you place multiple data dimensions on columns, the pivot table will display one column for all combinations of the items in the selected dimensions. When you place a data dimension on rows, the pivot table will display one row per dimension item in a similar fashion. The dimensions you select as filters will not be included in the pivot table, but will aggregate and filter the table data based on the selected filter items. The work-flow for creating a simple pivot table is: * Select dimension items in the left menu, for instance a few data elements or indicators. * Click “Layout” on the top menu and arrange the data dimensions as columns, rows, and filters. You can leave the selection as it is if desired. * Click “Update”. A pivot table similar as below will be displayed. Notice how indicators are listed on columns and periods as rows.

The screenshot shows the dhis2 web-pivot interface. On the left, there is a sidebar with a tree view containing 'Indicators', 'Data elements', 'Reporting rates', 'Periods', 'Organisation units', and 'C. Implementing Partner'. The main area displays a pivot table with the following data:

Data elements	Number of HIV Positive pregnant women enrolled in KMMP services	Number of KMMP support group sessions led	Number of New HIV Negative Clients enrolled in KMMP(ANC only)	Number of New HIV Positive Clients in KMMP(AN and PN)	Percentage of new HIV Positive pregnant women enrolled in KMMP services	Total
Periods / C. Implementing Partner	AMURT	AMURT	AMURT	AMURT	AMURT	
July 2015						
August 2015			67	67	56	123
September 2015						
Total			67	67	56	0 123

1.6.2 Reports

Reports functionality can be accessed by clicking on Apps -> More apps -> Reports or by clicking on Apps then searching for Reports on the search bar.



There are two main types of reports than can be generated from PHES; Dataset Reports and Standard reports:

Dataset Reports

Dataset reports are printer friendly views of the data entry screen filled with either raw or aggregated data. These are only available for data sets that have custom data entry forms and not for default or section forms. You can access data set reports from *Apps->Reports*. A Criteria window will appear where you fill in the details for your report: * **Dataset**: The data set you want to display. * **Reporting period**: The actual period you want data for. This can be aggregated as well as raw periods. This means that you can ask for a quarterly or annual report even though the data set is collected monthly. A data set's period type (collection frequency) is defined in data set maintenance. First select the period type (Monthly, Quarterly, Yearly etc.) in the drop down next to Prev and Next buttons, and then select one of the available periods from the dropdown list below. Use Prev and Next to jump one year back or forward. * **Use data for selected unit only**: Use this option if you want a report for an orgunit that has children, but only want the data collected directly for this unit and not the data collected by its children. If you want a typical aggregated report for an orgunit you do not want to tick this option. * **Reporting Organisation unit**: Here you select the orgunit you want the report for. This can be at any level in the hierarchy as the data will be aggregated up to this level automatically (if you do not tick the option above). When you are done filling in the report criteria you click on * **Generate** *. The report will appear as HTML in a printer-friendly format. Use the print and save as functions in the browser to print or save (as HTML) the report. You can also export the data set report in Excel and PDF formats. Below is a sample dataset report layout:

The screenshot shows the PHES Data Set Report interface. The top navigation bar includes 'dhis2', 'JPHEs', and links for 'Apps' and 'Profile'. The left sidebar contains a menu with options like 'Report', 'Standard Report', 'Data Set Report', 'Reporting Rate Summary', 'Resource', 'Organisation Unit Report', 'Data Approval', 'Report Table', 'Analytics and Data Mart', and 'Analytics and Data Mart'. The main content area is titled 'Data Set Report' and includes buttons for 'Data criteria', 'Download as Excel', 'Download as PDF', and 'Print'. Below these buttons, the report title 'Kenya - Jan to Mar 2016' is displayed. A text box for comments is present, followed by a 'Share' button. The report content is titled '3.1.3 Malaria' and displays a table with the following data:

3.1.3 Malaria	
Number of ITNs distributed that were purchased or subsidized with USG support	
Number of houses sprayed with insecticide with USG support	
Number of people trained in malaria treatment or prevention	
Number of Male	
Number of Female	

Standard Reports

You access the available reports by navigating to *Apps->Reports*. In the report menu in the left bar, click Standard Report. A list of all pre-defined reports will appear in the main window.

You run/view a report by clicking on the name of the report and then selecting “Create” from the contextual menu. If there are any pre-defined parameters, you will see a report parameter window where you must fill in the values needed for orgunit and/or reporting month, depending on what has been defined in the underlying report table(s). Click on “Get Report” when you are ready. The report will either appear directly in your browser or be available as a PDF file for download, depending on your browser settings for handling PDF files. You can save the file and keep it locally on your computer for later use.

1.7 Clearing Cache

During periods of customizing PHES you will often do a lot of changes to forms and reports. As a result, sometimes the content stored locally in your web browser is not updated accordingly and there is a need to clear your browser cache. PHES heavily utilizes the offline storage features, enabling you for instance to capture data even while being disconnected from the Internet. However, most browsers do not clear the offline content (local storage, indexed database) by default when clearing the cache. There are several ways by which you can clear your browser cache. The simplest way to clear cache on your browser is pressing the combination of keys <Ctrl><Shift><Delete> on the keyboard. Another way is by using PHES’s browser cache cleaner app, which can be accessed from Apps->More Apps->Browser Cache Cleaner. This displays a page with several options as below;

dhis2
JPHEs

DHIS 2 browser cache cleaner

Session Storage

dhis2.de.cst.dataSetAssociations	<input type="checkbox"/>
dhis2.de.cst.metadata	<input type="checkbox"/>

Local Storage

dhis2.dashboard.current.CMbaire	<input type="checkbox"/>
dhis2.dashboard.current.DrSoti	<input type="checkbox"/>
dhis2.dashboard.current.christine	<input type="checkbox"/>
formversions	<input type="checkbox"/>
ouRoots	<input type="checkbox"/>
ouUsername	<input type="checkbox"/>
ouVersion	<input type="checkbox"/>

IndexedDB

Select whatever you want cleared and click on Clear button.

For Chrome browser users, another way is by using an app found in Chrome Web Store as follows

- Install the app from [here](#)
- An icon will be added to the top right corner. Right-click it and select “Options”.
- Under “Data to remove” select everything except “Cookies”.
- Under “Time period” select “Everything”, and close the browser tab.
- Click the Clear cache icon in the top-right corner.

All cached data, including offline content, will now be cleared, and you will get a fresh view of the system.

1.8 Appendix 1: References

Dhis2.org. (2016). Chapter 1. What is DHIS 2?. [online] Available at: <https://www.dhis2.org/doc/snapshot/en/user/html/ch01.html> [Accessed 10 May 2016]. Dhis2.github.io. (2016). DHIS2 Documentation. [online] Available at: <http://dhis2.github.io/dhis2-docs/> [Accessed 10 May 2016]. Dhis2.org. (2014). How to really clear the browser cache. [online] Available at: <https://www.dhis2.org/tutorials/how-to-really-clear-browser-cache> [Accessed 10 May 2016].

- search